

**VOLUME II:  
CHICKASAW COUNTY**

**IOWA STATE  
PROFILE**

**Please visit the Iowa State Profile Dashboard:**

**[www.westernes.com/Iowa](http://www.westernes.com/Iowa)**

**For and online version of this profile with many additional features including:**

- **Mapping**
- **Interactive Charts and Tables**
- **Data Downloads**
- **Interactive Long Read**
- **Interactive Tour**
- **Jurisdiction to Jurisdiction Comparison**
- **Download Additional Reports**
- **And More**



## Chickasaw County

### DEMOGRAPHICS

#### Population Estimates

The Census Bureau's current census estimates indicate that Chickasaw County's population decreased from 12,439 in 2010 to 12,023 in 2016, or by 3.3 percent. This compares to a statewide population change of 2.9 percent over the period. The number of people from 25 to 34 years of age decreased by 3.9 percent, and the number of people from 55 to 64 years of age increased by 13.7 percent. The white population decreased by 4 percent, while the black population increased by 106.4 percent. The Hispanic population decreased from 269 to 256 people between 2010 and 2016 or by 4.8 percent. These data are presented in Table II.19.1.

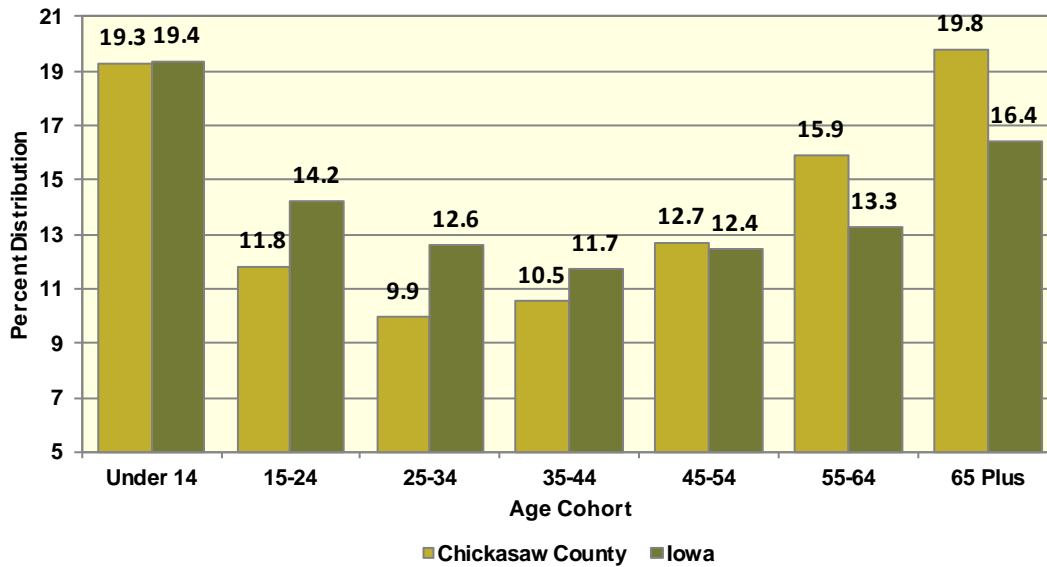
<b>Table II.19.1</b>						
<b>Profile of Population Characteristics</b>						
Chickasaw County vs. State of Iowa						
2010 Census and 2016 Current Census Estimates						
Subject	Chickasaw County			Iowa		
	2010 Census	Jul-16	% Change	2010 Census	Jul-16	% Change
<b>Population</b>	<b>12,439</b>	<b>12,023</b>	<b>-3.3%</b>	<b>3,046,355</b>	<b>3,134,693</b>	<b>2.9%</b>
<b>Age</b>						
Under 14 years	2,438	2,317	-5%	603,673	607,020	0.6%
15 to 24 years	1,391	1,422	2.2%	430,187	445,808	3.6%
25 to 34 years	1,244	1,196	-3.9%	382,583	394,373	3.1%
35 to 44 years	1,341	1,266	-5.6%	364,548	367,535	0.8%
45 to 54 years	1,966	1,529	-22.2%	439,726	389,744	-11.4%
55 to 64 years	1,683	1,913	13.7%	372,750	415,998	11.6%
65 and Over	2,376	2,380	0.2%	452,888	514,215	13.5%
<b>Race</b>						
White	12,295	11,799	-4%	2,839,615	2,864,884	0.9%
Black	47	97	106.4%	91,695	114,874	25.3%
American Indian and Alaskan Native	11	16	45.5%	13,563	15,924	17.4%
Asian	40	36	-10%	54,232	78,735	45.2%
Native Hawaiian or Pacific Islander	0	0	0%	2,419	3,592	48.5%
Two or more races	46	75	63%	44,831	56,684	26.4%
<b>Ethnicity (of any race)</b>						
Hispanic or Latino	269	256	-4.8%	151,544	182,606	20.5%

Table II.19.2, presents the population of Chickasaw County by age and gender from the 2010 Census and 2016 current census estimates. The 2010 Census count showed a total of 6,255 males, who accounted for 50.3 percent of the population, and the remaining 49.7 percent, or 6,184 persons, were female. In 2016, the number of males rose to 6,058 persons, and accounted for 50.4 percent of the population, with the remaining 49.6 percent, or 5,965 persons being female.



Table II.19.2 Population by Age and Gender Chickasaw County 2010 Census and Current Census Estimates							
Age	2010 Census			2016 Current Census Estimates			% Change 10-16
	Male	Female	Total	Male	Female	Total	
Under 14 years	1,268	1,170	2,438	1,166	1,151	2,317	-5%
15 to 24 years	727	664	1,391	755	667	1,422	2.2%
25 to 34 years	643	601	1,244	606	590	1,196	-3.9%
35 to 44 years	707	634	1,341	660	606	1,266	-5.6%
45 to 54 years	707	634	1,341	660	606	1,266	-5.6%
55 to 64 years	1,019	947	1,966	785	744	1,529	-22.2%
65 and Over	1,036	1,340	2,376	1,102	1,278	2,380	-3.3%
<b>Total</b>	<b>6,255</b>	<b>6,184</b>	<b>12,439</b>	<b>6,058</b>	<b>5,965</b>	<b>12,023</b>	<b>-3.3%</b>
<b>% of Total</b>	50.3%	49.7%	.	50.4%	49.6%	.	

**Diagram II.19.1**  
**Age Distribution**  
Chickasaw County  
2016 Current Census Estimates



According to data from the Census Bureau, between 1990 and 2000, the population in Chickasaw County decreased from 13,295 to 13,095 persons, or by -1.5 percent. Between 2000 and 2010, Chickasaw County population, changed by -656 persons, to a total population of 12,439 persons. The most recent estimates indicated that Chickasaw County’s population fell an additional -416 persons since the 2010 Census, to 12,023 persons in July 2016.

<b>Table II.19.3</b> <b>Population Estimates:</b> <b>Births, Deaths, and Migration</b> Chickasaw County 1990-2010 Census Data and Intercensal Estimates	
<b>1990 Census</b>	<b>13,295</b>
Natural Increase 90-00	100
Net Migration 90-00	-300
<b>2000 Census</b>	<b>13,095</b>
Natural Increase 00-09	140
Net Migration 00-09	-770
<b>2009 Population Estimate</b>	<b>12,465</b>
<b>2010 Census</b>	<b>12,439</b>
Natural Increase 10-16	34
Net Migration 10-16	-450
<b>2016 Population Estimate</b>	<b>12,023</b>

There are some important implications of these population growth estimates. Total population change is a combination of births, deaths, and the net migration of those arriving in and leaving the state. The result of births minus deaths is termed the *natural increase*. As shown in Table II.19.3, Chickasaw County had a natural increase, of 100 persons between 1990 and 2000. During the April 2000 to July 2009 period, Chickasaw County’s natural increase was estimated at 140 persons. Between 2010 and 2016, the natural increase was estimated at 34 persons, and the net migration was -450 persons.

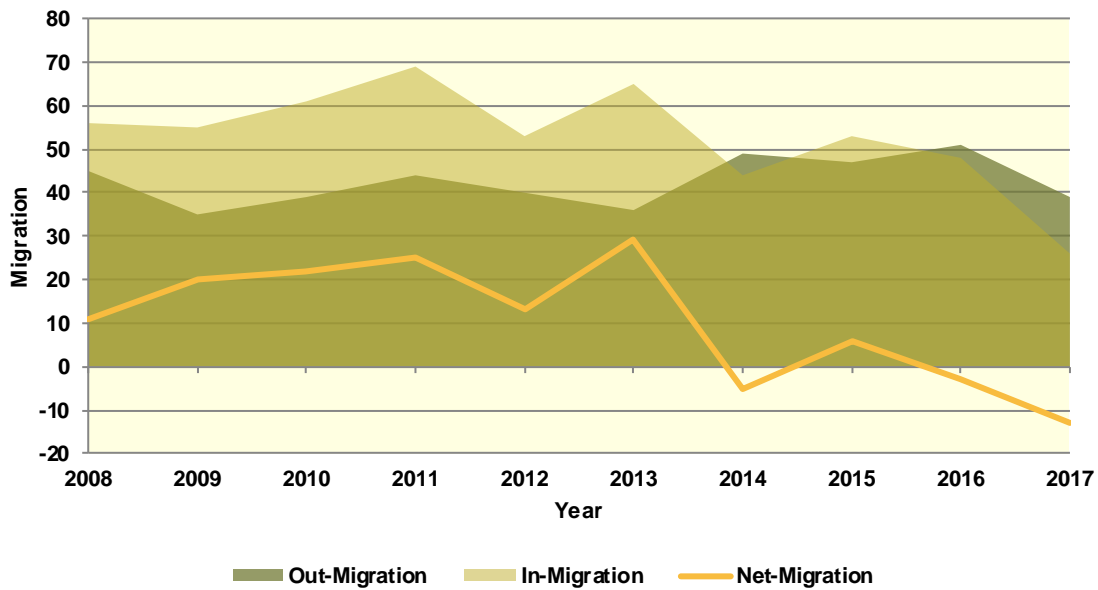
### Population Migration Trends

The Iowa Department of Transportation (IOWADOT) collects data on drivers who move to Iowa and exchange licenses from other states as well as those surrendering Iowa driver’s licenses when relocating to a different state. The IOWADOT data do not represent a precise count of migration, as they show only the net change in the number of driver’s licenses, but the data indicate the general direction of population movement.

As can be seen in Table II.19.4 in 2008 there was a total of 56 in-migrations with a total of 45 out-migrations, which led to a net-migration of 11 persons. The most recent first half 2017 data saw a net-migration of -13 persons, with 26 persons entering Chickasaw County and 39 persons leaving Chickasaw County.

Diagram II.19.2, shows in and out- migration as a shaded area, with net migration depicted as a line graph. As can be seen the maximum net migration occurred in 2013 with 29 people entering and the migration lowest net migration occurred in 2014 with 5 entering Chickasaw County.

**Diagram II.19.2**  
**Net In-migration by Gender**  
 Chickasaw County  
 Iowa DOT Data: 2008 – First Half 2017



The IOWADOT data also collects gender and age information. Table II.19.4, shows in- and out-migration by gender. In the most recent first half 2017 data, 69 percent of net-migrants, or -9 persons were male, with the remaining 31 percent, or -4 persons were female.

Gender	2008	2009	2010	2011	2012	2013	2014	2015	2016	2017-First Half
<b>In</b>										
Male	32	25	28	31	24	32	21	27	24	9
Female	24	30	33	38	29	33	23	26	24	17
<b>Total</b>	<b>56</b>	<b>55</b>	<b>61</b>	<b>69</b>	<b>53</b>	<b>65</b>	<b>44</b>	<b>53</b>	<b>48</b>	<b>26</b>
<b>Out</b>										
Male	23	20	16	27	16	14	22	20	26	18
Female	22	15	23	17	24	22	27	27	25	21
<b>Total</b>	<b>45</b>	<b>35</b>	<b>39</b>	<b>44</b>	<b>40</b>	<b>36</b>	<b>49</b>	<b>47</b>	<b>51</b>	<b>39</b>
<b>Net</b>										
Male	9	5	12	4	8	18	-1	7	-2	-9
Female	2	15	10	21	5	11	-4	-1	-1	-4
<b>Total</b>	<b>11</b>	<b>20</b>	<b>22</b>	<b>25</b>	<b>13</b>	<b>29</b>	<b>-5</b>	<b>6</b>	<b>-3</b>	<b>-13</b>

Table II.19.5, shows net-migration for Chickasaw County by age range. The largest age cohort in the most recent 2017 net migration data was those in the age range of 56 to 65, with 2 persons entering Chickasaw County. Those in the age range of 26 to 35 had the lowest levels of net migration, with 7 persons leaving Chickasaw County.

<b>Table II.19.5</b>										
<b>Migration by Age Range</b>										
Chickasaw County										
Iowa DOT Data										
<b>Age Range</b>	<b>2008</b>	<b>2009</b>	<b>2010</b>	<b>2011</b>	<b>2012</b>	<b>2013</b>	<b>2014</b>	<b>2015</b>	<b>2016</b>	<b>2017 – First Half</b>
<b>In</b>										
14-17	1	2	1	1	0	0	0	0	0	0
18-22	3	5	5	11	7	8	1	4	8	6
23-25	4	3	6	7	3	10	5	5	3	3
26-35	19	22	22	20	19	16	11	16	14	4
36-45	10	10	13	10	7	13	7	9	10	3
46-55	14	8	10	11	10	10	9	6	5	3
56-65	3	3	3	9	6	4	8	9	4	4
66 +	2	2	1	0	1	4	3	4	4	3
<b>Total</b>	<b>56</b>	<b>55</b>	<b>61</b>	<b>69</b>	<b>53</b>	<b>65</b>	<b>44</b>	<b>53</b>	<b>48</b>	<b>26</b>
<b>Out</b>										
14-17	1	0	0	0	0	2	1	1	0	0
18-22	7	2	3	7	9	5	5	4	8	5
23-25	10	5	6	5	8	7	5	5	3	4
26-35	17	13	9	17	8	4	13	16	15	11
36-45	3	6	9	5	4	4	8	6	7	8
46-55	2	5	6	4	3	11	8	8	7	5
56-65	1	4	2	4	4	3	6	4	5	2
66 +	4	0	4	2	4	0	3	3	6	4
<b>Total</b>	<b>45</b>	<b>35</b>	<b>39</b>	<b>44</b>	<b>40</b>	<b>36</b>	<b>49</b>	<b>47</b>	<b>51</b>	<b>39</b>
<b>Net</b>										
14-17	0	2	1	1	0	-2	-1	-1	0	0
18-22	-4	3	2	4	-2	3	-4	0	0	1
23-25	-6	-2	0	2	-5	3	0	0	0	-1
26-35	2	9	13	3	11	12	-2	0	-1	-7
36-45	7	4	4	5	3	9	-1	3	3	-5
46-55	12	3	4	7	7	-1	1	-2	-2	-2
56-65	2	-1	1	5	2	1	2	5	-1	2
66 +	-2	2	-3	-2	-3	4	0	1	-2	-1
<b>Total</b>	<b>11</b>	<b>20</b>	<b>22</b>	<b>25</b>	<b>13</b>	<b>29</b>	<b>-5</b>	<b>6</b>	<b>-3</b>	<b>-13</b>

### School Age Enrollment

Table II.19.6, show the school enrollment from the Iowa Department of Education for Chickasaw County. The school enrollment figures below are for both public and private schools. As can be seen below, in 2010 total enrollment was 2,318 students and was 1,257 in 2017, a change of -45.8 percent. Enrollment for students in grades 1 to 5 was 743 students in 2010 and 416 in 2017, which was a change of -44 percent. Likewise, 2010 enrollment for students in grades 9 to 12 was 654 and 351 in 2017, which was a change of -46.3 percent.

**Table II.19.6**  
**School Enrollment**  
 Chickasaw County  
 Iowa Department of Education

Year	Pre-K/K	Grades 1 - 5	Grades 6 - 8	Grades 9 - 12	Special Ed.	Total
2000	361	984	632	896	207	2,878
2001	330	961	606	880	7	2,784
2002	286	913	616	838	4	2,657
2003	286	874	614	858	4	2,636
2004	278	849	589	819	4	2,539
2005	252	833	739	682	81	2,506
2006	226	780	729	703	17	2,438
2007	309	753	683	692	92	2,437
2008	254	759	663	686	81	2,362
2009	275	751	653	695	80	2,351
2010	316	743	605	654	137	2,318
2011	356	764	571	651	155	2,342
2012	353	750	554	615	158	2,272
2013	354	727	592	587	152	2,260
2014	334	760	586	532	138	2,212
2015	320	649	393	531	164	1,893
2016	221	433	238	358	98	1,250
2017	237	416	253	351	109	1,257
<b>% Change 10-17</b>	<b>-25%</b>	<b>-44%</b>	<b>-58.2%</b>	<b>-46.3%</b>	<b>-20.4%</b>	<b>-45.8%</b>

## Census Demographic Data

In the 1980, 1990, and 2000 decennial censuses, the Census Bureau released several tabulations in addition to the full SF1 100 percent count data including the one-in-six SF3 sample. These additional samples, such as the SF3, asked supplementary questions regarding income and household attributes that were not asked in the 100 percent count. In the 2010 decennial census, the Census Bureau did not collect additional sample data, such as the SF3, and thus many important housing and income concepts are not available in the 2010 Census.

To study these important concepts the Census Bureau distributes the American Community Survey every year to a sample of the population and quantifies the results as one-, three- and five-year averages. The one-year sample only includes responses from the year the survey was implemented, while the five-year sample includes responses over a five-year period. Since the five-year estimates include more responses, the estimates can be tabulated down to the Census tract level, and considered more robust than the one or three year sample estimates.

## Population Estimates

Table II.19.7, shows population by age for the 2000 and 2010 Census. The population changed by -5 percent overall between 2000 and 2010. Various age cohorts changed at different rates. The elderly population, or persons aged 65 or older, changed by 1.3 percent to a total of 2,376 persons in 2010. Those aged 25 to 34 changed by -4.7 percent, and those aged under 5 changed by 9.3 percent.



<b>Table II.19.7</b>					
<b>Population by Age</b>					
Chickasaw County					
2000 & 2010 Census SF1 Data					
Age	2000 Census		2010 Census		% Change 00-10
	Population	% of Total	Population	% of Total	
Under 5	752	5.7%	822	6.6%	9.3%
5 to 19	2,994	22.9%	2,453	19.7%	-18.1%
20 to 24	577	4.4%	554	4.5%	-4%
25 to 34	1,305	10%	1,244	10%	-4.7%
35 to 54	3,756	28.7%	3,307	26.6%	-12%
55 to 64	1,366	10.4%	1,683	13.5%	23.2%
65 or Older	2,345	17.9%	2,376	19.1%	1.3%
<b>Total</b>	<b>13,095</b>	<b>100.0%</b>	<b>12,439</b>	<b>100.0%</b>	<b>-5%</b>

The elderly population is further explored in Table II.19.8. Those aged 65 to 66 changed by 21.6 percent between 2000 and 2010, resulting in a population of 265 persons. Those aged 85 or older changed by 12.9 percent during the same time period, and resulted in 395 persons over age 85 in 2010.

<b>Table II.19.8</b>					
<b>Elderly Population by Age</b>					
Chickasaw County					
2000 & 2010 Census SF1 Data					
Age	2000 Census		2010 Census		% Change 00-10
	Population	% of Total	Population	% of Total	
65 to 66	218	9.3%	265	11.2%	21.6%
67 to 69	342	14.6%	358	15.1%	4.7%
70 to 74	566	24.1%	552	23.2%	-2.5%
75 to 79	498	21.2%	416	17.5%	-16.5%
80 to 84	371	15.8%	390	16.4%	5.1%
85 or Older	350	14.9%	395	16.6%	12.9%
<b>Total</b>	<b>2,345</b>	<b>100.0%</b>	<b>2,376</b>	<b>100.0%</b>	<b>1.3%</b>

Population by race and ethnicity is shown in Table II.19.9. The white population changed by -6.3 percent between 2000 and 2010, and resulted in representing 97.4 percent of the population in 2010. The black population changed by 485.7 percent, represented 0.3 percent of the population in 2010. The American Indian and Asian populations represented 0.1 and 0.3 percent, respectively, in 2010. As for ethnicity, the Hispanic population changed by 228 percent between 2000 and 2010, compared to the -6.5 percent growth rate for non-Hispanics.



<b>Table II.19.9</b>					
<b>Population by Race and Ethnicity</b>					
Chickasaw County					
2000 & 2010 Census SF1 Data					
Race	2000 Census		2010 Census		% Change 00-10
	Population	% of Total	Population	% of Total	
White	12,931	98.7%	12,119	97.4%	-6.3%
Black	7	0.1%	41	0.3%	485.7%
American Indian	4	0%	10	0.1%	150%
Asian	35	0.3%	40	0.3%	14.3%
Native Hawaiian/ Pacific Islander	1	0%	0	0%	-100%
Other	38	0.3%	169	1.4%	344.7%
Two or More Races	79	0.6%	60	0.5%	-24.1%
<b>Total</b>	<b>13,095</b>	<b>100.0%</b>	<b>12,439</b>	<b>100.0%</b>	<b>-5%</b>
<b>Hispanic</b>	82	0.6%	269	2.2%	228%
<b>Non-Hispanic</b>	13,013	99.4%	12,170	97.8%	-6.5%

Population by race and ethnicity through 2016 is shown in Table II.19.10. The white population represented 98.2 percent of the population in 2016, compared with black households accounting for 0.7 percent of the population. Hispanic households represented 2.2 percent of the population in 2016.

<b>Table II.19.10</b>				
<b>Population by Race and Ethnicity</b>				
Chickasaw County				
2010 Census & 2016 Five-Year ACS				
Race	2010 Census		2016 Five-Year ACS	
	Population	% of Total	Population	% of Total
White	12,119	97.4%	11,946	98.2%
Black	41	0.3%	90	0.7%
American Indian	10	0.1%	30	0.2%
Asian	40	0.3%	40	0.3%
Native Hawaiian/ Pacific Islander	0	0%	0	0%
Other	169	1.4%	20	0.2%
Two or More Races	60	0.5%	38	0.3%
<b>Total</b>	<b>12,439</b>	<b>100.0%</b>	<b>12,164</b>	<b>100.0%</b>
<b>Non-Hispanic</b>	12,170	97.8%	11,895	97.8%
<b>Hispanic</b>	269	2.2%	269	2.2%

The population by race is broken down further by ethnicity in Table II.19.11. While the white non-Hispanic population changed by -6.6 percent between 2000 and 2010, the white Hispanic population changed by 144.8 percent. The black non-Hispanic population changed by 314.3 percent.

<b>Table II.19.11</b>					
<b>Population by Race and Ethnicity</b>					
Chickasaw County					
2000 & 2010 Census Data					
Race	2000		2010 Census		% Change 00 - 10
	Population	% of Total	Population	% of Total	
<b>Non-Hispanic</b>					
White	12,902	99.1%	12,048	99%	-6.6%
Black	7	0.1%	29	0.2%	314.3%
American Indian	3	0%	5	0%	66.7%
Asian	34	0.3%	40	0.3%	17.6%
Native Hawaiian/ Pacific Islander	0	0%	0	0%	0%
Other	0	0%	0	0%	0%
Two or More Races	67	0.5%	48	0.4%	-28.4%
<b>Total Non-Hispanic</b>	<b>13,013</b>	<b>100.0%</b>	<b>12,170</b>	<b>100.0%</b>	<b>-6.5%</b>
<b>Hispanic</b>					
White	29	35.4%	71	26.4%	144.8%
Black	0	0%	12	4.5%	
American Indian	1	1.2%	5	1.9%	400%
Asian	1	1.2%	0	0%	-100%
Native Hawaiian/ Pacific Islander	1	1.2%	0	0%	-100%
Other	38	46.3%	169	62.8%	344.7%
Two or More Races	12	14.6%	12	4.5%	0%
<b>Total Hispanic</b>	<b>82</b>	<b>100.0%</b>	<b>269</b>	<b>100.0%</b>	<b>228%</b>
<b>Total Population</b>	<b>13,095</b>	<b>100.0%</b>	<b>12,439</b>	<b>100.0%</b>	<b>-5%</b>

The change in race and ethnicity between 2010 and 2016 is shown in Table II.19.12. During this time, the total non-Hispanic population was 11,895 persons in 2016. The Hispanic population was 269.

<b>Table II.19.12</b>				
<b>Population by Race and Ethnicity</b>				
Chickasaw County				
2010 Census & 2016 Five-Year ACS				
Race	2010 Census		2016 Five-Year ACS	
	Population	% of Total	Population	% of Total
<b>Non-Hispanic</b>				
White	12,048	99%	11,725	98.6%
Black	29	0.2%	71	0.6%
American Indian	5	0%	30	0.3%
Asian	40	0.3%	40	0.3%
Native Hawaiian/ Pacific Islander	0	0%	0	0%
Other	0	0%	0	0%
Two or More Races	48	0.4%	29	0.2%
<b>Total Non-Hispanic</b>	<b>12,170</b>	<b>100.0%</b>	<b>11,895</b>	<b>100.0%</b>
<b>Hispanic</b>				
White	71	26.4%	221	82.2%
Black	12	4.5%	19	7.1%
American Indian	5	1.9%	0	0%
Asian	0	0%	0	0%
Native Hawaiian/ Pacific Islander	0	0%	0	0%
Other	169	62.8%	20	7.4%
Two or More Races	12	4.5%	9	3.3%
<b>Total Hispanic</b>	<b>269</b>	<b>100.0%</b>	<b>269</b>	<b>100.0%</b>
<b>Total Population</b>	<b>12,439</b>	<b>100.0%</b>	<b>12,164</b>	<b>100.0%</b>

Households by type and tenure are shown in Table II.19.13. Family households represented 64.7 percent of households, while non-family households accounted for 35.3 percent. These changed from 67.1 and 32.9 percent, respectively.

<b>Table II.19.13</b>				
<b>Household Type by Tenure</b>				
Chickasaw County				
2010 Census SF1 & 2016 Five-Year ACS Data				
Household Type	2010 Census		2016 Five-Year ACS	
	Households	Households	Households	% of Total
Family Households	3,490	67.1%	3,391	64.7%
Married-Couple Family	2,937	84.2%	2,820	83.2%
Owner-Occupied	2,681	91.3%	2,557	90.7%
Renter-Occupied	256	8.7%	263	9.3%
Other Family	553	15.8%	571	16.3%
Male Householder, No Spouse Present	226	40.9%	280	39.6%
Owner-Occupied	167	73.9%	187	66.8%
Renter-Occupied	59	26.1%	93	33.2%
Female Householder, No Spouse Present	327	59.1%	291	57.3%
Owner-Occupied	197	60.2%	197	67.7%
Renter-Occupied	130	39.8%	94	32.3%
Non-Family Households	1,714	32.9%	1,853	35.3%
Owner-Occupied	1,171	68.3%	1,172	63.2%
Renter-Occupied	543	31.7%	681	36.8%
<b>Total</b>	<b>5,204</b>	<b>100.0%</b>	<b>5,244</b>	<b>100.0%</b>

The group quarters population was 183 in 2010, compared to 225 in 2000. Institutionalized populations experienced a -25 percent change between 2000 and 2010. Non-institutionalized populations experienced a 4.1 percent change during this same time period.

<b>Table II.19.14</b>					
<b>Group Quarters Population</b>					
Chickasaw County					
2000 & 2010 Census SF1 Data					
Group Quarters Type	2000 Census		2010 Census		% Change 00-10
	Population	% of Total	Population	% of Total	
<b>Institutionalized</b>					
Correctional Institutions	5	2.8%	0	0%	-100%
Juvenile Facilities	.	.	0	0%	.
Nursing Homes	171	97.2%	132	100%	-22.8%
Other Institutions	0	0%	0	0%	0%
<b>Total</b>	<b>176</b>	<b>100.0%</b>	<b>132</b>	<b>100.0%</b>	<b>-25 %</b>
<b>Noninstitutionalized</b>					
College Dormitories	0	0%	0	0%	0%
Military Quarters	0	0%	0	0%	0%
Other Noninstitutionalized	49	100%	51	100%	4.1%
<b>Total</b>	<b>49</b>	<b>100.0%</b>	<b>51</b>	<b>100.0%</b>	<b>4.1%</b>
<b>Group Quarters Population</b>	<b>225</b>	<b>100.0%</b>	<b>183</b>	<b>100.0%</b>	<b>-18.7%</b>

The number of foreign born persons are shown in Table II.19.15. An estimated 0.8 percent of the population was born in Mexico, some 0.3 percent were born in Guatemala, and another 0.2 percent were born in Philippines.

**Table II.19.15**  
**Place of Birth for the Foreign-Born Population**  
 Chickasaw County  
 2016 Five-Year ACS

Number	County	Number of Person	Percent of Total Population
#1 country of origin	Mexico	100	0.8%
#2 country of origin	Guatemala	31	0.3%
#3 country of origin	Philippines	27	0.2%
#4 country of origin	Colombia	7	0.1%
#5 country of origin	Korea	5	0%
#6 country of origin	Egypt	3	0%
#7 country of origin	Canada	2	0%
#8 country of origin	Hong Kong	2	0%
#9 country of origin	Poland	2	0%
#10 country of origin	Afghanistan	0	0%

Limited English Proficiency and the language spoken at home are shown in Table II.19.16. An estimated 0.9 percent of the population speaks Spanish at home, followed by 0.6 percent speaking German or other West Germanic languages.

**Table II.19.16**  
**Limited English Proficiency and Language Spoken at Home**  
 Chickasaw County  
 2016 Five-Year ACS

Number	County	Number of Person	Percent of Total Population
#1 LEP Language	Spanish	102	0.9%
#2 LEP Language	German or other West Germanic languages	66	0.6%
#3 LEP Language	Tagalog	6	0.1%
#4 LEP Language	French, Haitian, or Cajun	2	0%
#5 LEP Language	Arabic	0	0%
#6 LEP Language	Chinese	0	0%
#7 LEP Language	Korean	0	0%
#8 LEP Language	Other Asian and Pacific Island languages	0	0%
#9 LEP Language	Other Indo-European languages	0	0%
#10 LEP Language	Other and unspecified languages	0	0%

## Disability

The disability rate from the 2000 Census is shown in Table II.19.17. Some 14.4 percent of the population was disabled in 2000, or a total of 1,755 persons. The disability rate was highest for those over 65, with 35 percent disabled.

<b>Table II.19.17</b> <b>Disability by Age</b> Chickasaw County 2000 Census SF3 Data		
Age	Total	
	Disabled Population	Disability Rate
5 to 15	114	5.1%
16 to 64	881	11.3%
65 and older	760	35%
<b>Total</b>	<b>1,755</b>	<b>14.4%</b>

Table II.19.18 shows disability by type in 2000. There were 851 physical disabilities in 2000, some 474 employment disabilities, and 533 go-outside-home disabilities.

<b>Table II.19.18</b> <b>Total Disabilities Tallied: Aged 5 and Older</b> Chickasaw County 2000 Census SF3 Data	
Disability Type	Population
Sensory disability	491
Physical disability	851
Mental disability	450
Self-care disability	259
Employment disability	474
Go-outside-home disability	533
<b>Total</b>	<b>3,058</b>

Disability by age, as estimated by the 2016 ACS, is shown in Table II.19.19. The disability rate for females was 14.2 percent, compared to 14.1 percent for males. The disability rate changed precipitously higher with age, with 41.4 percent of those over 75 experiencing a disability.

<b>Table II.19.19</b> <b>Disability by Age</b> Chickasaw County 2016 Five-Year ACS Data						
Age	Male		Female		Total	
	Disabled Population	Disability Rate	Disabled Population	Disability Rate	Disabled Population	Disability Rate
Under 5	0	0%	0	0%	0	0%
5 to 17	47	4.1%	69	6.6%	116	5.3%
18 to 34	85	7.7%	79	8%	164	7.8%
35 to 64	352	14%	286	12.2%	638	13.1%
65 to 74	225	39.9%	136	21.9%	361	30.5%
75 or Older	148	34.7%	276	46.2%	424	41.4%
<b>Total</b>	<b>857</b>	<b>14.1%</b>	<b>846</b>	<b>14.2%</b>	<b>1,703</b>	<b>14.2%</b>

The number of disabilities by type, as estimated by the 2016 ACS, is shown in Table II.19.20. Some 7.1 percent have an ambulatory disability, 4.5 have an independent living disability, and 2.2 percent have a self-care disability.

<b>Table II.19.20</b>		
<b>Total Disabilities Tallied: Aged 5 and Older</b>		
Chickasaw County 2016 Five-Year ACS		
<b>Disability Type</b>	<b>Population with Disability</b>	<b>Percent with Disability</b>
Hearing disability	710	5.9%
Vision disability	263	2.2%
Cognitive disability	488	4.3%
Ambulatory disability	805	7.1%
Self-Care disability	249	2.2%
Independent living disability	416	4.5%

## Education

Education and employment data, as estimated by the 2016 ACS, is presented in Table II.19.21. In 2016, some 6,132 persons were employed and 200 were unemployed. This totaled a labor force of 6,332 persons. The unemployment rate for Chickasaw County was estimated to be 3.2 percent in 2016.

<b>Table II.19.21</b>	
<b>Employment, Labor Force and Unemployment</b>	
Chickasaw County 2016 Five-Year ACS Data	
<b>Employment Status</b>	<b>2016 Five-Year ACS</b>
Employed	6,132
Unemployed	200
<b>Labor Force</b>	<b>6,332</b>
Unemployment Rate	3.2%

In 2016, 88.7 percent of households in Chickasaw County had a high school education or greater.

<b>Table II.19.22</b>	
<b>High School or Greater Education</b>	
Chickasaw County 2016 Five-Year ACS Data	
<b>Education Level</b>	<b>Households</b>
High School or Greater	4,654
Total Households	5,244
<b>Percent High School or Above</b>	<b>88.7%</b>

As seen in Table II.19.23, some 42.5 percent of the population had a high school diploma or equivalent, another 32.5 percent have some college, 10.9 percent have a Bachelor's Degree, and 3.5 percent of the population had a graduate or professional degree.

<b>Table II.19.23</b>		
<b>Educational Attainment</b>		
Chickasaw County 2016 Five-Year ACS Data		
<b>Education Level</b>	<b>Population</b>	<b>Percent</b>
Less Than High School	982	10.6%
High School or Equivalent	3,950	42.5%
Some College or Associates Degree	3,013	32.5%
Bachelor's Degree	1,013	10.9%
Graduate or Professional Degree	326	3.5%
<b>Total Population Above 18 years</b>	<b>9,284</b>	<b>100.0%</b>



## ECONOMICS

### Labor Force

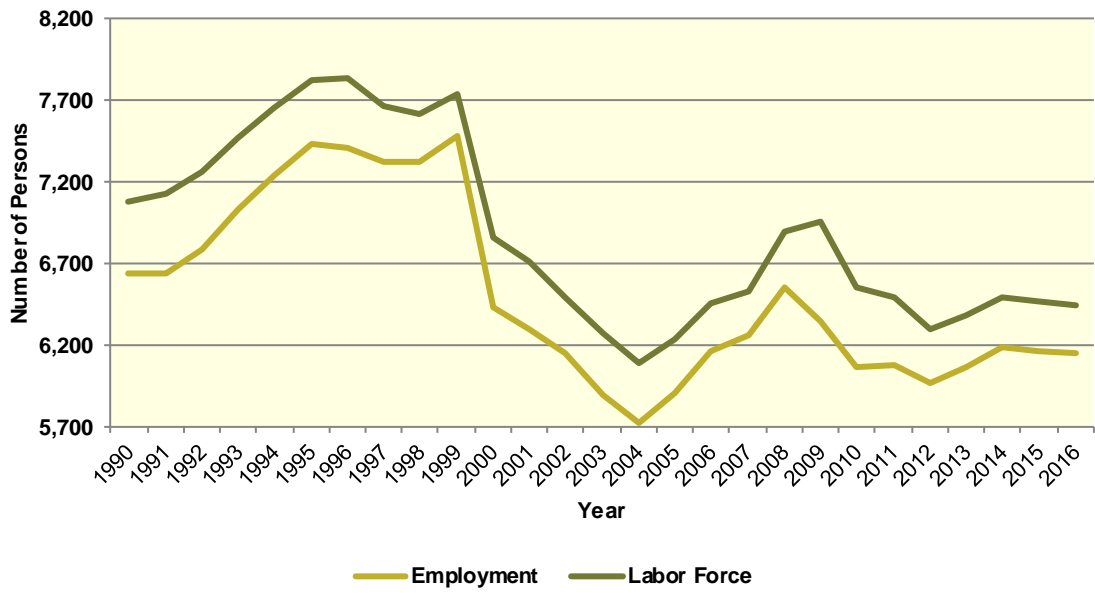
Table II.19.24, shows the labor force statistics for Chickasaw County from 1990 to the present. Over the entire series the lowest unemployment rate occurred in 1999 with a rate of 3.4 percent. The highest level of unemployment occurred during 2009 rising to a rate of 8.9 percent. This compared to a statewide low of 2.6 in 1999 and statewide high of 6.4 percent in 2009. Over the last year, the unemployment rate in Chickasaw County decreased from 4.6 percent in 2015 to 4.5 percent in 2016, which compared to a statewide decrease to 3.7 percent.

Table II.19.24 Labor Force Statistics Chickasaw County 1990 - 2016 BLS Data					
Year	Chickasaw County				Statewide Unemployment Rate
	Unemployment	Employment	Labor Force	Unemployment Rate	
1990	438	6,645	7,083	6.2%	4.4%
1991	484	6,641	7,125	6.8%	4.7%
1992	468	6,791	7,259	6.4%	4.5%
1993	448	7,027	7,475	6%	4%
1994	420	7,237	7,657	5.5%	3.5%
1995	393	7,431	7,824	5%	3.4%
1996	417	7,414	7,831	5.3%	3.5%
1997	350	7,321	7,671	4.6%	3.1%
1998	289	7,329	7,618	3.8%	2.7%
1999	260	7,478	7,738	3.4%	2.6%
2000	433	6,430	6,863	6.3%	2.6%
2001	418	6,297	6,715	6.2%	3.3%
2002	350	6,150	6,500	5.4%	4%
2003	385	5,891	6,276	6.1%	4.5%
2004	362	5,731	6,093	5.9%	4.5%
2005	328	5,907	6,235	5.3%	4.3%
2006	291	6,170	6,461	4.5%	3.7%
2007	272	6,263	6,535	4.2%	3.7%
2008	341	6,550	6,891	4.9%	4.2%
2009	618	6,344	6,962	8.9%	6.4%
2010	485	6,070	6,555	7.4%	6%
2011	406	6,084	6,490	6.3%	5.5%
2012	327	5,968	6,295	5.2%	5%
2013	319	6,062	6,381	5%	4.7%
2014	310	6,190	6,500	4.8%	4.3%
2015	296	6,169	6,465	4.6%	3.8%
2016	288	6,154	6,442	4.5%	3.7%

Diagram II.19.3, shows the employment and labor force for Chickasaw County. The difference between the two lines represents the number of unemployed persons. In the most recent year, employment stood at 6,154 persons, with the labor force reaching 6,442, indicating there were a total of 288 unemployed persons.



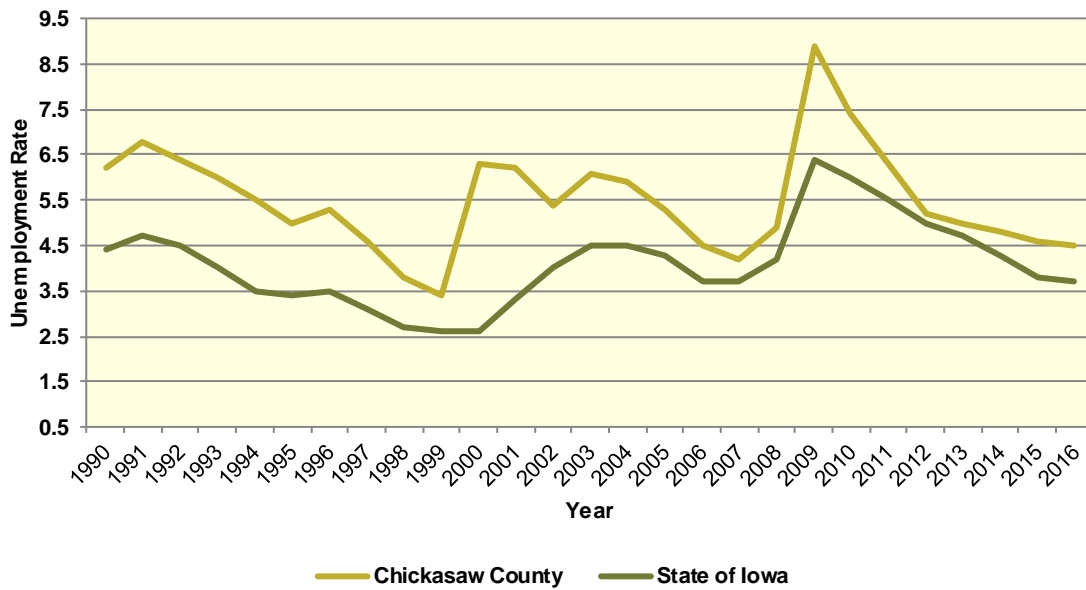
**Diagram II.19.3**  
**Employment and Labor Force**  
 Chickasaw County  
 1990 – 2016 BLS Data



**Unemployment**

Diagram II.19.4, shows the unemployment rate for both the State and Chickasaw County. During the 1990’s the average rate for Chickasaw County was 5.3 percent, which compared to 3.6 percent statewide. Between 2000 and 2010 the unemployment rate had an average of 5.8 percent, which compared to 4.1 percent statewide. Since 2010, the average unemployment rate was 5.4 percent. Over the course of the entire period the Chickasaw County had an average unemployment rate that higher than the State, 5.5 percent for Chickasaw County, versus 4.1 statewide.

**Diagram II.19.4**  
**Annual Unemployment Rate**  
 Chickasaw County  
 1990 – 2016 BLS Data



**Earnings and Employment**

The Bureau of Economic Analysis (B.E.A.) produces regional economic accounts, which provide a consistent framework for analyzing and comparing individual state and local area economies. Table II.19.25, shows total real earnings by industry for Chickasaw County. In the most recent 2016 estimate, the manufacturing industry had the largest total real earnings, with total real earnings reaching \$124,958,000. Between 2015 and 2016 the construction industry saw the largest percentage increase, rising by 17 percent.

**Table II.19.25**  
**Real Earnings by Industry**  
 Chickasaw County  
 BEA Table CA-5N Data (1,000's of 2016 Dollars)

NAICS Categories	2001	2010	2011	2012	2013	2014	2015	2016	% Change 15-16
Farm earnings	17,589	47,643	87,357	66,763	88,095	48,324	50,393	17,795	-64.7
Forestry, fishing, related activities, and other	0	0	0	0	0	0	0	0	0
Mining	0	0	0	0	0	0	0	0	0
Utilities	0	0	0	0	0	0	0	0	0
Construction	19,541	31,349	33,464	35,433	30,856	28,750	24,026	28,111	17
Manufacturing	54,222	60,233	70,066	74,248	88,815	98,133	115,943	124,958	7.8
Wholesale trade	20,138	21,573	21,375	24,948	25,600	27,045	25,938	26,566	2.4
Retail trade	22,447	20,345	20,612	18,945	19,955	19,978	19,471	19,581	0.6
Transportation and warehousing	0	0	0	0	0	0	0	0	0
Information	1,492	1,580	1,236	1,163	1,938	1,974	3,818	4,112	7.7
Finance and insurance	9,011	10,765	9,036	10,532	9,523	10,349	9,245	8,971	-3
Real estate and rental and leasing	2,688	2,048	2,202	2,762	4,482	4,324	4,738	4,508	-4.8
Professional and technical services	4,317	0	5,284	4,862	5,780	6,464	6,281	5,760	-8.3
Management of companies and enterprises	0	0	0	0	0	0	0	0	0
Administrative and waste services	3,226	2,662	0	0	0	0	0	0	0
Educational services	0	0	0	0	0	0	0	0	0
Health care and social assistance	0	0	0	0	0	0	0	0	0
Arts, entertainment, and recreation	306	741	624	600	566	985	1,015	1,143	12.6
Accommodation and food services	3,123	2,824	2,939	2,980	2,749	2,694	3,496	3,549	1.5
Other services, except public administration	12,311	12,609	12,810	13,622	12,795	13,235	13,283	13,334	0.4
Government and government enterprises	31,510	36,852	35,803	34,835	35,448	35,582	34,692	38,237	10.2
<b>Total</b>	<b>233,977</b>	<b>305,409</b>	<b>360,277</b>	<b>351,508</b>	<b>387,975</b>	<b>359,349</b>	<b>378,541</b>	<b>364,151</b>	<b>-3.8</b>



Table II.19.26, shows the total employment by industry for the Chickasaw County. The most recent estimates show the manufacturing industry was the largest employer in Chickasaw County, with employment reaching 1,276 jobs in 2016. Between 2015 and 2016 the government and government enterprises industry saw the largest percentage increase, rising by 7 percent to 493 jobs.

<b>Table II.19.26</b>									
<b>Employment by Industry</b>									
Chickasaw County BEA Table CA25 Data									
<b>NAICS Categories</b>	<b>2001</b>	<b>2010</b>	<b>2011</b>	<b>2012</b>	<b>2013</b>	<b>2014</b>	<b>2015</b>	<b>2016</b>	<b>% Change 15-16</b>
Farm earnings	1,236	1,032	1,029	1,001	1,031	991	1,020	1,010	-1
Forestry, fishing, related activities, and other	0	0	0	0	0	0	0	0	0
Mining	0	0	0	0	0	0	0	0	0
Utilities	0	0	0	0	0	0	0	0	0
Construction	494	521	545	559	533	523	463	472	1.9
Manufacturing	1,078	1,101	1,235	1,226	1,245	1,278	1,286	1,276	-0.8
Wholesale trade	418	349	341	378	400	435	396	396	0
Retail trade	792	712	738	707	703	732	742	755	1.8
Transportation and warehousing	0	0	0	0	0	0	0	0	0
Information	44	40	40	43	41	41	35	33	-5.7
Finance and insurance	256	286	306	322	330	337	327	324	-0.9
Real estate and rental and leasing	161	205	221	220	252	258	265	271	2.3
Professional and technical services	139	0	146	121	130	144	149	155	4
Management of companies and enterprises	0	0	0	0	0	0	0	0	0
Administrative and waste services	169	159	0	0	0	0	0	0	0
Educational services	0	0	0	0	0	0	0	0	0
Health care and social assistance	0	0	0	0	0	0	0	0	0
Arts, entertainment, and recreation	64	96	95	94	98	85	82	84	2.4
Accommodation and food services	362	302	312	303	281	281	306	292	-4.6
Other services, except public administration	420	435	455	455	455	469	481	483	0.4
Government and government enterprises	773	729	735	713	709	697	676	723	7
<b>Total</b>	<b>7,463</b>	<b>7,422</b>	<b>7,651</b>	<b>7,665</b>	<b>7,745</b>	<b>7,831</b>	<b>7,754</b>	<b>7,781</b>	<b>0.3</b>



Table II.19.27, shows the real average earnings per job by industry for Chickasaw County. These figures are calculated by dividing the total real earning displayed in Tables II.19.25 and II.19.26, by industry. In 2016, the information industry had the highest average earnings reaching 124,606 dollars. Between 2015 and 2016 the construction industry saw the largest percentage increase, rising by 14.8 percent.

**Table II.19.27**  
**Real Earnings Per Job by Industry**  
 Chickasaw County  
 BEA Table CA5N and CA25 Data

NAICS Categories	2001	2010	2011	2012	2013	2014	2015	2016	% Change 15-16
Farm earnings	14,230	46,166	84,895	66,696	85,447	48,762	49,405	17,619	-64.3
Forestry, fishing, related activities, and other	0	0	0	0	0	0	0	0	0
Mining	0	0	0	0	0	0	0	0	0
Utilities	0	0	0	0	0	0	0	0	0
Construction	39,557	60,170	61,402	63,386	57,891	54,971	51,893	59,557	14.8
Manufacturing	50,299	54,708	56,733	60,562	71,337	76,786	90,158	97,929	8.6
Wholesale trade	48,178	61,815	62,684	65,999	64,000	62,171	65,500	67,086	2.4
Retail trade	28,342	28,574	27,929	26,796	28,386	27,293	26,241	25,935	-1.2
Transportation and warehousing	0	0	0	0	0	0	0	0	0
Information	33,902	39,497	30,906	27,047	47,265	48,156	109,075	124,606	14.2
Finance and insurance	35,200	37,640	29,528	32,707	28,856	30,710	28,273	27,688	-2.1
Real estate and rental and leasing	16,695	9,989	9,963	12,556	17,787	16,758	17,878	16,635	-7
Professional and technical services	31,055	0	36,190	40,180	44,464	44,888	42,152	37,161	-11.8
Management of companies and enterprises	0	0	0	0	0	0	0	0	0
Administrative and waste services	19,086	16,743	0	0	0	0	0	0	0
Educational services	0	0	0	0	0	0	0	0	0
Health care and social assistance	0	0	0	0	0	0	0	0	0
Arts, entertainment, and recreation	4,782	7,718	6,563	6,378	5,776	11,590	12,380	13,607	9.9
Accommodation and food services	8,627	9,351	9,418	9,834	9,782	9,588	11,426	12,154	6.4
Other services, except public administration	29,313	28,987	28,154	29,940	28,120	28,220	27,615	27,607	0
Government and government enterprises	40,764	50,552	48,711	48,857	49,997	51,050	51,320	52,887	3.1
<b>Total</b>	<b>31,352</b>	<b>41,149</b>	<b>47,089</b>	<b>45,859</b>	<b>50,094</b>	<b>45,888</b>	<b>48,819</b>	<b>46,800</b>	<b>-4.1</b>

Table II.19.28 shows total employment and real personal income for the years of 1969 to 2016. As can be seen in total real personal income in 2016, comprising all wage and salary earnings, proprietorship income, dividends, interest, rents, and transfer payments, was \$607,604,000 a -2.5 percent change between 2015 and 2016. Table II.19.28, shows further annual data for the years 1969 through 2016. In 2010, total employment was 7,422 and 7,781 in 2016, which a change of 0.3 percent over this period.

**Table II.19.28**  
**Total Employment and Real Personal Income**  
 Chickasaw County  
 BEA Data 1969 Through 2016

Year	1,000s of 2016 Dollars						Per Capita Income	Total Employment	Average Real Earnings Per Job
	Earnings	Social Security Contributions	Residents Adjustments	Dividends, Interest, Rents	Transfer Payments	Personal Income			
1969	156,704	8,414	25,639	41,020	23,316	238,265	16,256	5,657	27,703
1970	165,024	8,963	24,980	43,219	25,705	249,966	16,756	5,874	28,092
1971	155,857	9,148	23,240	44,204	26,345	240,498	16,341	5,846	26,662
1972	209,411	12,811	15,801	47,207	26,743	286,350	19,349	6,500	32,218
1973	256,322	15,421	25,832	53,191	28,891	348,815	23,419	6,944	36,911
1974	209,049	15,551	31,848	55,753	30,617	311,716	20,866	7,017	29,790
1975	204,904	15,896	29,716	58,973	34,403	312,100	20,526	7,065	29,001
1976	198,717	17,188	25,069	59,737	36,790	303,126	19,815	7,238	27,454
1977	238,468	18,205	27,206	64,101	36,055	347,624	22,544	7,211	33,070
1978	258,880	19,025	25,539	68,228	37,996	371,618	24,019	7,146	36,227
1979	236,964	20,569	29,365	72,623	38,631	357,013	23,036	7,378	32,119
1980	202,810	19,739	25,008	80,821	44,116	333,016	21,595	7,266	27,913
1981	210,535	19,690	23,923	90,099	44,743	349,610	22,809	7,197	29,254
1982	175,489	18,410	19,070	97,003	47,565	320,716	21,083	7,058	24,864
1983	162,426	18,464	14,299	102,208	49,665	310,133	20,474	7,142	22,742
1984	208,425	19,825	14,802	105,166	48,465	357,032	23,964	7,175	29,050
1985	208,018	20,313	10,097	99,465	49,757	347,023	23,958	7,041	29,544
1986	210,141	20,782	9,832	97,990	49,941	347,122	24,490	6,812	30,849
1987	233,519	21,965	12,944	89,929	48,688	363,116	26,473	6,771	34,487
1988	204,725	22,832	15,714	84,069	48,382	330,058	24,380	6,901	29,666
1989	214,986	22,901	17,591	85,917	49,489	345,083	25,720	7,036	30,556
1990	220,631	22,498	19,526	80,312	52,356	350,327	26,363	7,101	31,070
1991	215,283	23,281	19,475	78,076	54,519	344,074	26,028	7,119	30,241
1992	233,114	24,106	20,693	78,574	57,478	365,753	27,671	7,177	32,481
1993	209,402	24,871	21,903	74,378	58,906	339,718	25,663	7,479	27,998
1994	251,918	26,475	21,420	74,247	59,671	380,781	28,659	7,576	33,252
1995	256,178	27,767	20,605	87,201	60,867	397,084	29,862	7,972	32,135
1996	281,466	26,096	22,386	89,818	62,944	430,519	32,443	7,906	35,602
1997	289,474	28,967	23,637	93,450	64,286	441,880	33,294	7,923	36,536
1998	285,243	30,582	24,127	98,378	64,811	441,976	33,389	8,282	34,442
1999	299,104	33,665	22,596	97,759	65,830	451,623	34,190	8,337	35,877
2000	268,639	28,349	31,383	104,722	72,659	449,054	34,102	7,756	34,637
2001	233,977	26,114	37,261	103,440	76,496	425,061	32,221	7,463	31,352
2002	235,791	26,551	37,502	93,453	79,490	419,685	32,431	7,244	32,550
2003	229,693	26,175	36,408	89,254	78,138	407,317	31,896	6,939	33,102
2004	263,376	25,903	36,434	82,471	76,685	433,062	34,124	6,791	38,783
2005	264,730	26,568	36,783	76,594	80,094	431,634	34,363	6,957	38,052
2006	263,785	28,369	40,179	80,480	87,834	443,908	35,222	7,230	36,484
2007	276,137	29,344	43,287	96,018	88,638	474,736	37,858	7,478	36,927
2008	300,053	32,239	48,855	96,798	98,331	511,798	41,039	7,731	38,812
2009	276,749	31,833	48,412	96,360	107,117	496,805	39,856	7,513	36,836
2010	305,409	33,377	49,476	96,948	107,191	525,648	42,302	7,422	41,149
2011	360,277	32,397	48,830	102,194	108,599	587,503	47,291	7,651	47,088
2012	351,508	32,448	50,497	118,008	100,894	588,459	47,905	7,665	45,858
2013	387,975	36,997	50,887	109,778	99,866	611,508	50,009	7,745	50,094
2014	359,349	36,833	52,299	115,099	100,050	589,964	48,357	7,831	45,888
2015	378,541	37,107	54,507	124,778	102,746	623,464	51,590	7,754	48,819
2016	364,151	38,944	51,758	125,997	104,642	607,604	50,537	7,781	46,800

Diagram II.19.5, shows real average earnings per job for Chickasaw County from 1990 to 2016. Over this period the average earning per job for Chickasaw County was \$37,513, which was lower than the statewide average of \$43,526 over the same period.

**Diagram II.19.5**  
**Real Average Earnings Per Job**  
 Chickasaw County  
 BEA Data 1990 - 2016

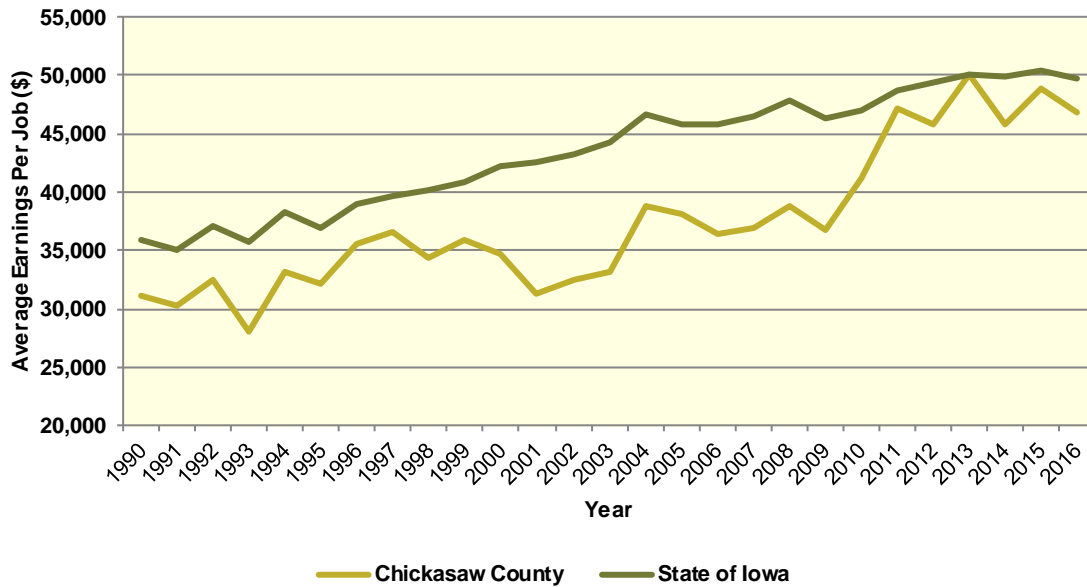
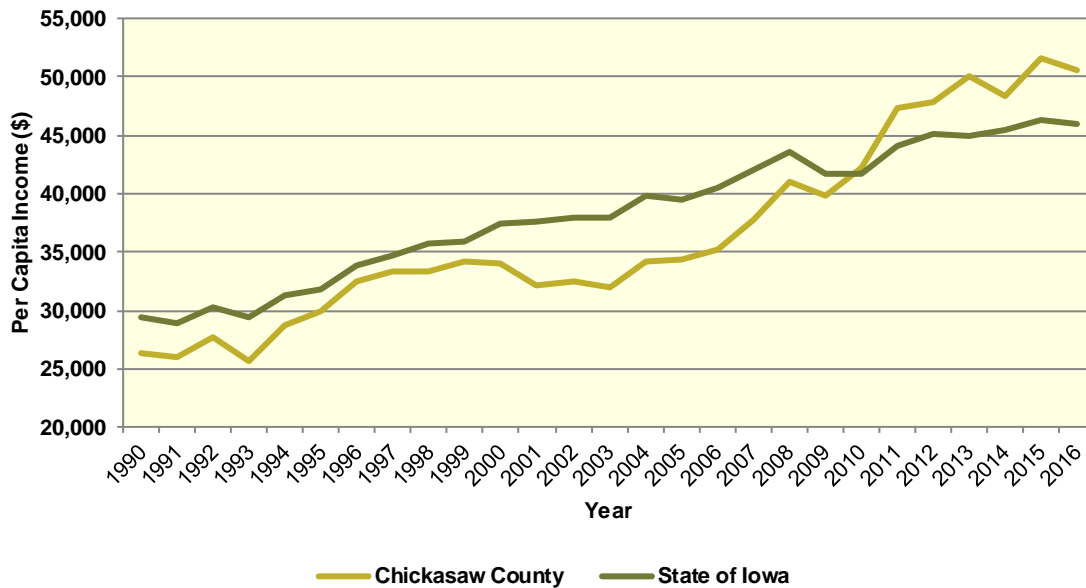


Diagram II.19.6, shows real per capita income for the Chickasaw County from 1990 to 2016, which is calculated by dividing total personal income from all sources by population. Per capita income is a broader measure of wealth than real average earnings per job, which only captures the working population. Over this period, the real per capita income for Chickasaw County was \$36,617, which was lower than the statewide average of \$38,254 over the same period.

### Diagram II.19.6 Real Per Capita Income

Chickasaw County  
BEA Data 1990 - 2016



### Quarterly Census of Employment and Wages

The BLS produces the Quarterly Census of Employment and Wages (QCEW), which reports monthly data on employment and quarterly data on wages and number of business establishments. QCEW employment data represent only filled jobs, whether full or part-time, temporary or permanent, by place of work the pay period. If data do not meet BLS or State agency disclosure standards they are displayed as (ND) and not disclosed. Data from this series are from the period of January 2006 through December 2016 and are presented in Table II.19.29, with the 2016 information considered preliminary (p). Between 2015 and 2016, total annual employment decreased from 4,739 persons in 2015 to 4,736 in 2016, a change of -0.1 percent.

**Table II.19.29**  
**Total Monthly Employment**  
Chickasaw County  
BLS QCEW Data, 2001–2016(p)

Period	2006	2007	2008	2009	2010	2011	2012	2013	2014	2015	2016
Jan	4,149	4,446	4,596	4,878	4,392	4,420	4,545	4,564	4,729	4,627	4,569
Feb	4,235	4,373	4,612	4,758	4,416	4,418	4,525	4,527	4,592	4,579	4,563
Mar	4,316	4,435	4,648	4,749	4,533	4,565	4,651	4,631	4,760	4,631	4,571
Apr	4,415	4,568	4,763	4,787	4,599	4,650	4,695	4,650	4,805	4,741	4,789
May	4,495	4,709	4,889	4,817	4,618	4,769	4,849	4,869	4,978	4,829	4,849
Jun	4,626	4,780	5,016	4,877	4,734	4,861	4,842	4,989	5,042	4,900	4,933
Jul	4,562	4,603	4,854	4,748	4,595	4,737	4,633	4,738	4,739	4,637	4,701
Aug	4,601	4,613	4,887	4,669	4,596	4,760	4,682	4,754	4,810	4,707	4,721
Sep	4,632	4,672	5,037	4,622	4,675	4,753	4,763	4,840	4,829	4,774	4,718
Oct	4,628	4,637	5,153	4,672	4,763	4,802	4,830	4,892	4,864	4,862	4,828
Nov	4,639	4,691	5,146	4,651	4,647	4,751	4,769	4,874	4,840	4,821	4,810
Dec	4,519	4,638	5,060	4,603	4,610	4,704	4,687	4,803	4,758	4,759	4,783
<b>Annual</b>	<b>4,485</b>	<b>4,597</b>	<b>4,888</b>	<b>4,736</b>	<b>4,598</b>	<b>4,683</b>	<b>4,706</b>	<b>4,761</b>	<b>4,812</b>	<b>4,739</b>	<b>4,736</b>
% Change	.	2.5%	6.3%	-3.1%	-2.9%	1.8%	0.5%	1.2%	1.1%	-1.5%	-0.1%



The QCEW also reports average weekly wages, which represents total compensation paid during the calendar quarter, regardless of when services were performed. The BLS QCEW data indicated average weekly wages were \$729 in 2015. In 2016, average weekly wages saw an increased of 3.4 percent over the prior year, rising to \$754, or by 25 dollars. These data are shown in Table II.19.30.

<b>Table II.19.30</b>						
<b>Average Weekly Wages</b>						
Chickasaw County						
BLS QCEW Data, 2001–2016(p)						
<b>Year</b>	<b>First Quarter</b>	<b>Second Quarter</b>	<b>Third Quarter</b>	<b>Fourth Quarter</b>	<b>Annual</b>	<b>% Change</b>
2001	445	449	438	459	448	
2002	447	458	460	504	467	4.2%
2003	444	458	451	521	468	0.2%
2004	463	478	477	536	489	4.5%
2005	450	493	481	550	494	1%
2006	486	524	488	580	520	5.3%
2007	490	522	508	637	540	3.8%
2008	546	554	570	665	585	8.3%
2009	565	555	555	646	580	-0.9%
2010	536	592	610	703	611	5.3%
2011	586	626	652	695	640	4.7%
2012	636	665	664	694	665	3.9%
2013	641	653	690	736	681	2.4%
2014	681	680	696	773	708	4%
2015	697	686	724	806	729	3%
2016(p)	688	718	784	822	754	3.4%

Total business establishments reported by the QCEW are displayed in Table II.19.31. Between 2015 and 2016, the total number of business establishments in Chickasaw County increased by 3.4 percent, from 451 to 457 establishments.

<b>Table II.19.31</b>						
<b>Number of Business Establishments</b>						
Chickasaw County						
BLS QCEW Data, 2001–2016(p)						
<b>Year</b>	<b>First Quarter</b>	<b>Second Quarter</b>	<b>Third Quarter</b>	<b>Fourth Quarter</b>	<b>Annual</b>	<b>% Change</b>
2001	469	471	444	444	457	
2002	445	448	450	447	448	-2%
2003	448	459	462	458	457	2%
2004	455	451	445	445	449	-1.8%
2005	442	449	444	449	446	-0.7%
2006	445	447	453	458	451	1.1%
2007	448	451	447	452	450	-0.2%
2008	449	453	458	454	454	0.9%
2009	456	463	455	452	457	0.7%
2010	453	454	451	446	451	-1.3%
2011	435	440	440	440	439	-2.7%
2012	437	444	444	452	444	1.1%
2013	455	458	451	454	455	2.5%
2014	454	457	451	449	453	-0.4%
2015	445	446	456	455	451	-0.4%
2016	454	456	458	458	457	1.3%

## Iowa Department of Revenue

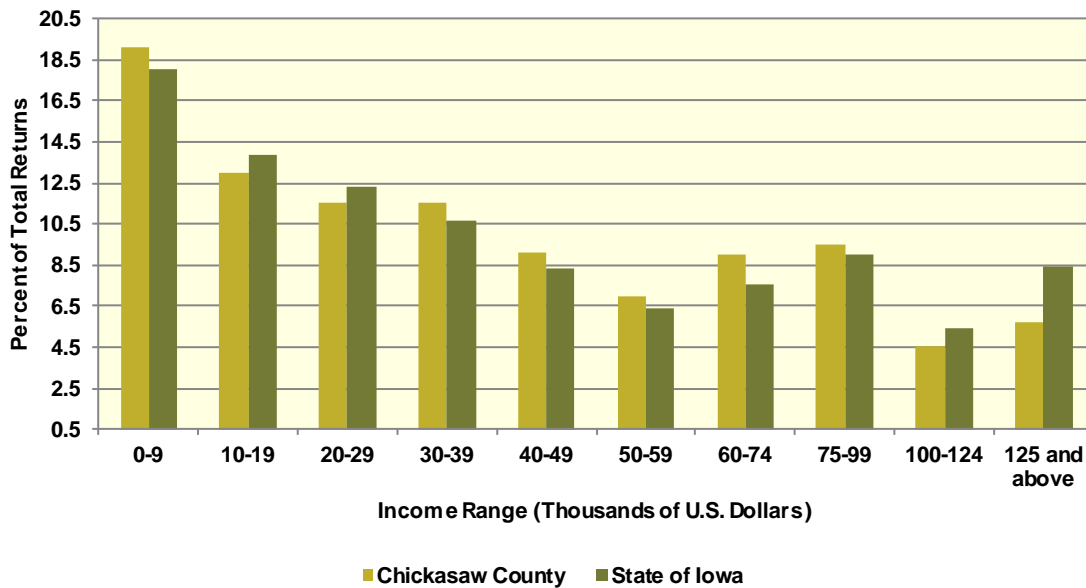
The Iowa Department of Revenue releases annual income tax statistics. Table II.19.32, shows the number of returns by adjusted gross income. For taxpayer confidentiality, if the number of returns was fewer than 5, the data was redacted. As a result the number of returns reported maybe slightly lower than the actual returns. Most redacted records occurred in the highest income brackets. The table below gives an accurate measure of the income distribution in Chickasaw County.

As can be seen below, the total number of returns between 2010 and 2015 increased by 0.6 percent, with 326 returns reported in 2015, which was the most recent year available. Between 2010 and 2015, the adjusted gross income class that saw the largest change was \$125,000 and above with a change of 63.5 percent. This compared to the income class of \$30,000-39,999, which saw the lowest percentage change between 2010 and 2015 of -13.4 percent.

**Table II.19.32**  
**Number of Tax Returns by Adjusted Gross Income**  
 Chickasaw County  
 Iowa DOR 2002 - 2015

Year	\$0 – 9,999	\$10,000 – 19,999	\$20,000 – 29,999	\$30,000 – 39,999	\$40,000 – 49,999	\$50,000 – 59,999	\$60,000 – 74,999	\$75,000 – 99,999	\$100,000 – 124,999	\$125,000 and above	Total
2002	1,507	961	857	628	525	392	381	205	49	72	5,577
2003	1,375	960	820	608	538	422	389	194	65	88	5,459
2004	1,347	914	815	619	549	435	398	255	74	94	5,500
2005	1,239	814	818	660	519	431	421	311	92	107	5,412
2006	1,222	808	826	634	539	392	495	348	112	141	5,517
2007	1,273	796	841	675	495	434	494	436	129	162	5,735
2008	1,252	788	807	671	502	412	509	451	155	177	5,724
2009	1,252	804	810	640	462	391	479	449	149	176	5,612
2010	1,186	824	756	676	470	385	517	444	159	217	5,634
2011	1,209	793	733	659	452	444	480	467	194	263	5,694
2012	1,202	749	671	683	503	367	480	506	238	315	5,714
2013	1,178	761	655	692	487	364	492	540	233	326	5,728
2014	1,141	701	694	686	489	384	464	551	254	364	5,728
2015	1,081	738	655	653	515	395	510	536	260	326	5,669
<b>Change 10 - 15</b>	<b>-8.9%</b>	<b>-10.4%</b>	<b>-13.4%</b>	<b>-3.4%</b>	<b>9.6%</b>	<b>2.6%</b>	<b>-1.4%</b>	<b>20.7%</b>	<b>63.5%</b>	<b>50.2%</b>	<b>0.6%</b>

**Diagram II.19.7**  
**2015 Income Distribution**  
 Chickasaw County  
 2015 Iowa DOR Data



**Poverty**

Poverty is the condition of having insufficient resources or income. In its extreme form, poverty is a lack of basic human needs, such as adequate and healthy food, clothing, housing, water, and health services. According to the Census Bureau’s Small Area Income and Poverty Estimates Program, the number of individuals in poverty increase from 1,292 in 2010 to 1,303 in 2016, with the poverty rate reaching 10.9 percent in 2016. This compared to a state poverty rate of 11.7 percent and a national rate of 14 percent in 2016. Table II.19.33, at right, presents poverty data for the county.

Year	Persons in Poverty	Poverty Rate
2000	1,035	7.9%
2001	1,013	7.9%
2002	1,140	9%
2003	984	7.8%
2004	1,067	8.5%
2005	1,118	9%
2006	1,027	8.4%
2007	962	8%
2008	1,243	10.4%
2009	1,103	9.3%
2010	1,292	10.6%
2011	1,210	9.9%
2012	1,268	10.5%
2013	1,292	10.6%
2014	1,183	9.8%
2015	1,015	8.5%
2016	1,303	10.9%

The rate of poverty for Chickasaw County is shown in Table II.19.34. In 2016, there were an estimated 1,073 persons living in poverty. This represented a 9 percent poverty rate, compared to 8.3 percent poverty in 2000. In 2016, some 12.8 percent of those in poverty were under age 6, and 17.6 percent were 65 or older.

<b>Table II.19.34</b> <b>Poverty by Age</b> Chickasaw County 2000 Census SF3 & 2016 Five-Year ACS Data				
Age	2000 Census		2016 Five-Year ACS	
	Persons in Poverty	% of Total	Persons in Poverty	% of Total
Under 6	82	7.7%	137	12.8%
6 to 17	277	26%	165	15.4%
18 to 64	540	50.7%	582	54.2%
65 or Older	167	15.7%	189	17.6%
<b>Total</b>	<b>1,066</b>	<b>100.0%</b>	<b>1,073</b>	<b>100.0%</b>
<b>Poverty Rate</b>	<b>8.3%</b>	.	<b>9%</b>	.

## HOUSING

The Census Bureau estimates that the total number of housing units decreased by -0.3 percent in Chickasaw County between 2010 and 2016, from 5,679 to 5,661. This compared to an estimated 3.3 percent increase statewide, as shown in Table II.19.35.

### Housing Production

The Census Bureau reports building permit authorizations and “per unit” valuation of building permits by county annually. Single-family construction usually represents most residential development in the county. Single-family building permit authorizations in Chickasaw County increased from 5 authorizations in 2015 to 9 in 2016.

The real value of single-family building permits increased from \$250,051 in 2015 to \$336,667 in 2016. This compares to an increase in permit value statewide, with values rising from \$234,346 in 2015 to \$235,750 in 2016. Additional details are given in Table II.19.36.

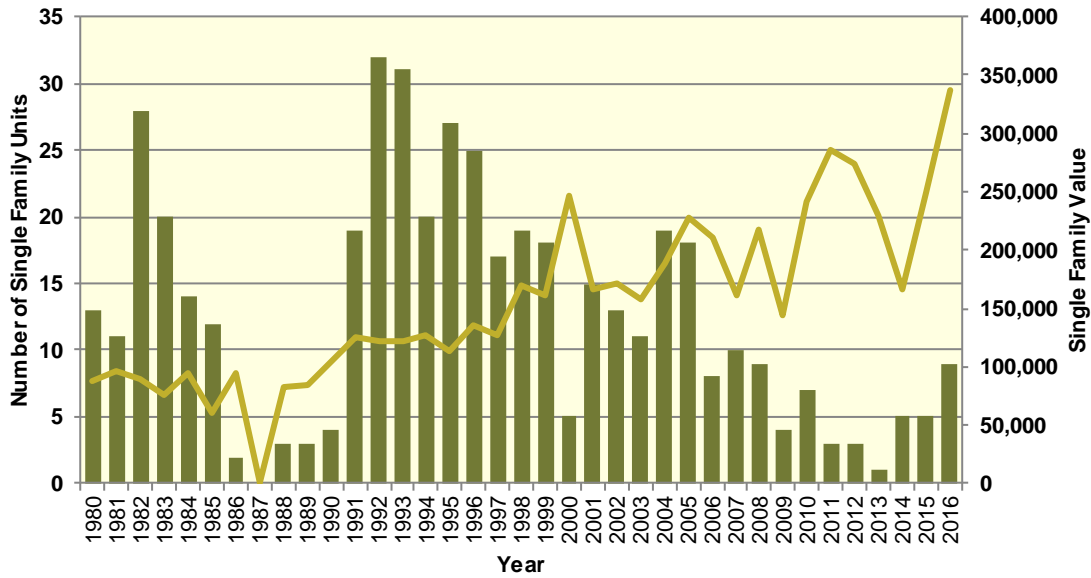
<b>Table II.19.35</b> <b>Housing Units</b> State of Iowa vs. Chickasaw County 2000 and 2016 Census Data and Intercensal Estimates				
Subject	Iowa	% Growth Since Census	Chickasaw County	% Growth Since Census
2000 Census Base	1,232,625	.	5,593	.
2010 Census	1,336,417	8.4%	5,679	1.5%
July 2011 Estimate	1,341,974	0.4%	5,675	-0.1%
July 2012 Estimate	1,346,403	0.7%	5,683	0.1%
July 2013 Estimate	1,353,274	1.3%	5,676	-0.1%
July 2014 Estimate	1,362,458	1.9%	5,667	-0.2%
July 2015 Estimate	1,370,778	2.6%	5,664	-0.3%
July 2016 Estimate	1,380,162	3.3%	5,661	-0.3%

**Table II.19.36**  
**Building Permits and Valuation**  
 Chickasaw County  
 Census Bureau Data, 1980–2016

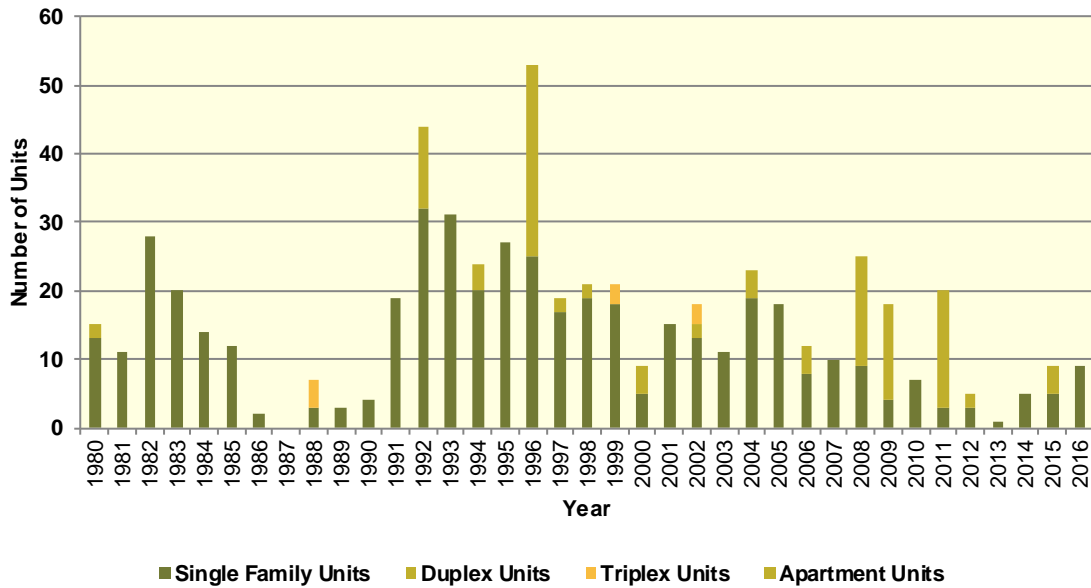
Year	Authorized Construction in Permit Issuing Areas					Per Unit Valuation, (Real 2016\$)	
	Single-Family	Duplex Units	Tri- and Four-Plex	Multi-Family Units	Total Units	Single-Family Units	Multi-Family Units
1980	13	2	0	0	15	88,089	0
1981	11	0	0	0	11	96,087	0
1982	28	0	0	0	28	89,394	0
1983	20	0	0	0	20	75,905	0
1984	14	0	0	0	14	94,363	0
1985	12	0	0	0	12	60,861	0
1986	2	0	0	0	2	93,989	0
1987	0	0	0	0	0	0	0
1988	3	0	4	0	7	83,303	0
1989	3	0	0	0	3	83,883	0
1990	4	0	0	0	4	104,778	0
1991	19	0	0	0	19	125,304	0
1992	32	12	0	0	44	122,335	0
1993	31	0	0	0	31	121,641	0
1994	20	4	0	0	24	126,205	0
1995	27	0	0	0	27	112,851	0
1996	25	0	0	28	53	135,842	86,514
1997	17	2	0	0	19	127,165	0
1998	19	2	0	0	21	169,000	0
1999	18	0	3	0	21	160,494	0
2000	5	4	0	0	9	245,781	0
2001	15	0	0	0	15	166,919	0
2002	13	2	3	0	18	171,630	0
2003	11	0	0	0	11	157,920	0
2004	19	4	0	0	23	188,295	0
2005	18	0	0	0	18	227,109	0
2006	8	4	0	0	12	211,085	0
2007	10	0	0	0	10	160,866	0
2008	9	0	0	16	25	217,567	63,167
2009	4	0	0	14	18	144,879	62,688
2010	7	0	0	0	7	241,534	0
2011	3	0	0	17	20	285,868	95,184
2012	3	2	0	0	5	273,629	0
2013	1	0	0	0	1	229,334	0
2014	5	0	0	0	5	166,704	0
2015	5	4	0	0	9	250,051	0
2016	9	0	0	0	9	336,667	0



**Diagram II.19.8**  
**Single Family Permits**  
 Chickasaw County  
 Census Bureau Data, 1980–2016



**Diagram II.19.9**  
**Total Permits by Unit Type**  
 Chickasaw County  
 Census Bureau Data, 1980–2016



### Housing Characteristics

Housing types by unit are shown in Table II.19.37. In 2016, there were 5,672 housing units, up from 5,593 in 2000. Single-family units accounted for 87.9 percent of units in 2016, compared to 85.8 in 2000. Apartment units accounted for 8 percent in 2016, compared to 3.1 percent in 2000.

<b>Table II.19.37 Housing Units by Type</b> Chickasaw County 2000 Census SF3 & 2016 Five-Year ACS Data				
Unit Type	2000 Census		2016 Five-Year ACS	
	Units	% of Total	Units	% of Total
Single-Family	4,799	85.8%	4,985	87.9%
Duplex	129	2.3%	9	0.2%
Tri- or Four-Plex	179	3.2%	80	1.4%
Apartment	174	3.1%	452	8%
Mobile Home	305	5.5%	140	2.5%
Boat, RV, Van, Etc.	7	0.1%	6	0.1%
<b>Total</b>	<b>5,593</b>	<b>100.0%</b>	<b>5,672</b>	<b>100.0%</b>

Some 91.6 percent of housing was occupied in 2010, compared to 92.8 percent in 2000. Owner-occupied housing changed 1.2 percent between 2000 and 2010, ending with owner-occupied units representing 81 percent of unit. Vacant units changed by 18.5 percent, resulting in 475 vacant units in 2010.

<b>Table II.19.38 Housing Units by Tenure</b> Chickasaw County 2000 & 2010 Census SF1 Data					
Tenure	2000 Census		2010 Census		% Change 00-10
	Units	% of Total	Units	% of Total	
Occupied Housing Units	5,192	92.8%	5,204	91.6%	0.2%
Owner-Occupied	4,165	80.2%	4,216	81%	1.2%
Renter-Occupied	1,027	19.8%	988	19%	-3.8%
Vacant Housing Units	401	7.2%	475	8.4%	18.5%
<b>Total Housing Units</b>	<b>5,593</b>	<b>100.0%</b>	<b>5,679</b>	<b>100.0%</b>	<b>1.5%</b>

Table II.19.39 shows housing units by tenure from 2010 to 2016. By 2016, there were 5,672 housing units. An estimated 78.4 percent were owner-occupied, and 7.5 percent were vacant.

<b>Table II.19.39 Housing Units by Tenure</b> Chickasaw County 2010 Census & 2016 Five-Year ACS Data				
Tenure	2010 Census		2016 Five-Year ACS	
	Units	% of Total	Units	% of Total
Occupied Housing Units	5,204	91.6%	5,244	92.5%
Owner-Occupied	4,216	81%	4,113	78.4%
Renter-Occupied	988	19%	1,131	21.6%
Vacant Housing Units	475	8.4%	428	7.5%
<b>Total Housing Units</b>	<b>5,679</b>	<b>100.0%</b>	<b>5,672</b>	<b>100.0%</b>

Households by household size are shown in Table II.19.40. There were a total of 5,204 households in 2010, up from 5,192 in 2000. One person households changed by 10.4 percent

between 2000 and 2010, while two person households changed by 8.2 percent. Three and four person households changed by -15.6 and -14.3 respectively, representing 12 percent and 10.4 percent of the population in 2010.

<b>Table II.19.40</b>					
<b>Households by Household Size</b>					
Chickasaw County					
2000 & 2010 Census SF1 Data					
Size	2000 Census		2010 Census		% Change 00-10
	Households	% of Total	Households	% of Total	
One Person	1,356	26.1%	1,497	28.8%	10.4%
Two Persons	1,929	37.2%	2,087	40.1%	8.2%
Three Persons	738	14.2%	623	12%	-15.6%
Four Persons	631	12.2%	541	10.4%	-14.3%
Five Persons	383	7.4%	289	5.6%	-24.5%
Six Persons	110	2.1%	115	2.2%	4.5%
Seven Persons or More	45	0.9%	52	1%	15.6%
<b>Total</b>	<b>5,192</b>	<b>100.0%</b>	<b>5,204</b>	<b>100.0%</b>	<b>0.2%</b>

Households by income is shown in Table II.19.41. Households earning more than \$100,000 per year represented 15.9 percent of households in 2016, compared to 3.9 percent in 2000. Households earning between \$50,000 and \$74,999 represented 18.8 percent of households in 2016, compared to 20.2 percent in 2000. Meanwhile, households earning less than \$15,000 accounted for 9.6 percent of households in 2016, compared to 15.6 percent in 2000.

<b>Table II.19.41</b>				
<b>Households by Income</b>				
Chickasaw County				
2000 Census SF3 & 2016 Five-Year ACS Data				
Income	2000 Census		2016 Five-Year ACS	
	Households	% of Total	Households	% of Total
Less than \$15,000	807	15.6%	501	9.6%
\$15,000 to \$19,999	316	6.1%	385	7.3%
\$20,000 to \$24,999	387	7.5%	346	6.6%
\$25,000 to \$34,999	846	16.3%	507	9.7%
\$35,000 to \$49,999	1,223	23.6%	1,003	19.1%
\$50,000 to \$74,999	1,050	20.2%	985	18.8%
\$75,000 to \$99,999	355	6.8%	684	13%
\$100,000 or More	204	3.9%	833	15.9%
<b>Total</b>	<b>5,188</b>	<b>100.0%</b>	<b>5,244</b>	<b>100.0%</b>



Table II.19.42, shows households by year home built. Housing units built between 2000 and 2009, and 2010 or later, account for 6.9 percent and 1.2 percent of households, respectively. Households built in the 1970’s, 1980’s, and 1990’s account for 17.8 percent, 6.4 percent, and 5.8, respectively. Housing units built prior to 1939 represented 35.4 percent of households in 2016.

<b>Table II.19.42</b>				
<b>Households by Year Home Built</b>				
Chickasaw County				
2000 Census SF3 & 2016 Five-Year ACS Data				
Year Built	2000 Census		2016 Five-Year ACS	
	Households	% of Total	Households	% of Total
1939 or Earlier	2,252	43.4%	1,858	35.4%
1940 to 1949	327	6.3%	289	5.5%
1950 to 1959	335	6.5%	501	9.6%
1960 to 1969	453	8.7%	603	11.5%
1970 to 1979	909	17.5%	932	17.8%
1980 to 1989	349	6.7%	336	6.4%
1990 to 1999	567	10.9%	303	5.8%
2000 to 2009	.	.	360	6.9%
2010 or Later	.	.	62	1.2%
<b>Total</b>	<b>5,192</b>	<b>100.0%</b>	<b>5,244</b>	<b>100.0%</b>

The distribution of unit types by race are shown in Table II.19.43. An estimated 88.9 percent of white households occupy single family homes, while 70 percent of black households do. Some 6.8 percent of white households occupied apartments, while 0 percent of black households do. An estimated 0 percent of Asian, and 100 percent of American Indian households occupy single family homes.

<b>Table II.19.43</b>							
<b>Distribution of Units in Structure by Race</b>							
Chickasaw County							
2016 Five-Year ACS Data							
Unit Type	White	Black	American Indian	Asian	Native Hawaiian/Pacific Islanders	Other	Two or More Races
Single-Family	88.9%	70%	100%	0%	0%	0%	100%
Duplex	0.2%	0%	0%	0%	0%	0%	0%
Tri- or Four-Plex	1.5%	0%	0%	0%	0%	0%	0%
Apartment	6.8%	0%	0%	100%	0%	0%	0%
Mobile Home	2.5%	0%	0%	0%	0%	0%	0%
Boat, RV, Van, Etc.	0%	30%	0%	0%	0%	0%	0%
<b>Total</b>	<b>100.0%</b>	<b>100.0%</b>	<b>100.0%</b>	<b>100.0%</b>	<b>100.0%</b>	<b>100.0%</b>	<b>100.0%</b>

The disposition of vacant housing units in 2000 and 2010 are shown in Table II.19.44. An estimated 25.9 percent of vacant units were for rent in 2010, a 38.2 percent change since 2000. In addition, some 13.7 percent of vacant units were for sale, a change of 0 percent between 2000 and 2010. “Other” vacant units represented 45.5 percent of vacant units in 2010. This is a change of 22 percent since 2000. “Other” vacant units are not for sale or rent, or otherwise available to the marketplace. These units may be problematic if concentrated in certain areas, and may create a “blighting” effect.

<b>Table II.19.44</b>					
<b>Disposition of Vacant Housing Units</b>					
Chickasaw County					
2000 & 2010 Census SF1 Data					
Disposition	2000 Census		2010 Census		% Change 00–10
	Units	% of Total	Units	% of Total	
For Rent	89	22.2%	123	25.9%	38.2%
For Sale	65	16.2%	65	13.7%	0%
Rented or Sold, Not Occupied	22	5.5%	22	4.6%	0%
For Seasonal, Recreational, or Occasional Use	48	12%	49	10.3%	2.1%
For Migrant Workers	0	0%	0	0%	0%
Other Vacant	177	44.1%	216	45.5%	22%
<b>Total</b>	<b>401</b>	<b>100.0%</b>	<b>475</b>	<b>100.0%</b>	<b>18.5%</b>

The disposition of vacant units between 2010 and 2016 are shown in Table II.19.45. By 2016, for rent units accounted for 8.6 percent of vacant units, while for sale units accounted for 17.3 percent. “Other” vacant units accounted for 49.3 percent of vacant units, representing a total of 211 “other” vacant units.

<b>Table II.19.45</b>				
<b>Disposition of Vacant Housing Units</b>				
Chickasaw County				
2010 Census & 2016 Five-Year ACS Data				
Disposition	2010 Census		2016 Five-Year ACS	
	Units	% of Total	Units	% of Total
For Rent	123	25.9%	37	8.6%
For Sale	65	13.7%	74	17.3%
Rented Not Occupied	9	1.9%	4	0.9%
Sold Not Occupied	13	2.7%	0	0%
For Seasonal, Recreational, or Occasional Use	49	10.3%	102	23.8%
For Migrant Workers	0	0%	0	0%
Other Vacant	216	45.5%	211	49.3%
<b>Total</b>	<b>475</b>	<b>100.0%</b>	<b>428</b>	<b>100.0%</b>

## Housing Problems

Households are classified as having housing problems if they face overcrowding, incomplete plumbing or kitchen facilities, or cost burdens. Overcrowding is defined as having from 1.1 to 1.5 people per room per residence, with severe overcrowding defined as having more than 1.5 people per room. Households with overcrowding are shown in Table II.19.46. In 2016, an estimated 0.6 percent of households were overcrowded, and an additional 0 percent were severely overcrowded.

<b>Table II.19.46</b> <b>Overcrowding and Severe Overcrowding</b> Chickasaw County 2000 Census SF3 & 2016 Five-Year ACS Data							
Data Source	No Overcrowding		Overcrowding		Severe Overcrowding		Total
	Households	% of Total	Households	% of Total	Households	% of Total	
<b>Owner</b>							
2000 Census	4,131	99%	32	0.8%	9	0.2%	4,172
2016 Five-Year ACS	4,093	99.5%	20	0.5%	0	0%	4,113
<b>Renter</b>							
2000 Census	1,009	98.9%	1	0.1%	10	1%	1,020
2016 Five-Year ACS	1,121	99.1%	10	0.9%	0	0%	5,244
<b>Total</b>							
2000 Census	5,140	99%	33	0.6%	19	0.4%	5,192
2016 Five-Year ACS	5,214	99.4%	30	0.6%	0	0%	5,244

Incomplete plumbing and kitchen facilities are another indicator of potential housing problems. According to the Census Bureau, a housing unit is classified as lacking complete plumbing facilities when any of the following are not present: piped hot and cold water, a flush toilet, and a bathtub or shower. Likewise, a unit is categorized as deficient when any of the following are missing from the kitchen: a sink with piped hot and cold water, a range or cook top and oven, and a refrigerator.

There were a total of 20 households with incomplete plumbing facilities in 2016, representing 0.4 percent of households in Chickasaw County. This is compared to 0.3 percent of households lacking complete plumbing facilities in 2000.

<b>Table II.19.47</b> <b>Households with Incomplete Plumbing Facilities</b> Chickasaw County 2000 Census SF3 & 2016 Five-Year ACS Data		
Households	2000 Census	2016 Five-Year ACS
With Complete Plumbing Facilities	5,178	5,224
Lacking Complete Plumbing Facilities	14	20
<b>Total Households</b>	<b>5,192</b>	<b>5,244</b>
<b>Percent Lacking</b>	<b>0.3%</b>	<b>0.4%</b>

There were 67 households lacking complete kitchen facilities in 2016, compared to 15 households in 2000. This was a change from 0.3 percent of households in 2000 to 1.3 percent in 2016.

<b>Table II.19.48</b> <b>Households with Incomplete Kitchen Facilities</b> Chickasaw County 2000 Census SF3 & 2016 Five-Year ACS Data		
Households	2000 Census	2016 Five-Year ACS
With Complete Kitchen Facilities	5,177	5,177
Lacking Complete Kitchen Facilities	15	67
<b>Total Households</b>	<b>5,192</b>	<b>5,244</b>
<b>Percent Lacking</b>	<b>0.3%</b>	<b>1.3%</b>

Cost burden is defined as gross housing costs that range from 30.0 to 50.0 percent of gross household income; severe cost burden is defined as gross housing costs that exceed 50.0 percent of gross household income. For homeowners, gross housing costs include property taxes, insurance, energy payments, water and sewer service, and refuse collection. If the homeowner has a mortgage, the determination also includes principal and interest payments on the mortgage loan.

For renters, this figure represents monthly rent and selected electricity and natural gas energy charges.

In Chickasaw County, 12.4 of households had a cost burden and 6.8 percent had a severe cost burden. Some 21.5 percent of renters were cost burdened, and 18.5 percent were severely cost burdened. Owner-occupied households without a mortgage had a cost burden rate of 5.4 percent and a severe cost burden rate of 1.5 percent. Owner occupied households with a mortgage had a cost burden rate of 14.1 percent, and severe cost burden at 5.5 percent.

**Table II.19.49**  
**Cost Burden and Severe Cost Burden by Tenure**  
 Chickasaw County  
 2000 Census & 2016 Five-Year ACS Data

Data Source	Less Than 30%		31%-50%		Above 50%		Not Computed		Total
	Households	% of Total	Households	% of Total	Households	% of Total	Households	% of Total	
<b>Owner With a Mortgage</b>									
2000 Census	1,275	83.2%	194	12.7%	55	3.6%	8	0.5%	1,532
2016 Five-Year ACS	1,682	80.3%	296	14.1%	116	5.5%	0	0%	2,094
<b>Owner Without a Mortgage</b>									
2000 Census	1,431	92.6%	68	4.4%	31	2%	15	1%	1,545
2016 Five-Year ACS	1,866	92.4%	109	5.4%	30	1.5%	14	0.7%	2,019
<b>Renter</b>									
2000 Census	624	67.2%	103	11.1%	84	9%	118	12.7%	929
2016 Five-Year ACS	567	50.1%	243	21.5%	209	18.5%	112	9.9%	1,131
<b>Total</b>									
2000 Census	3,330	83.1%	365	9.1%	170	4.2%	141	3.5%	4,006
2016 Five-Year ACS	4,115	78.5%	648	12.4%	355	6.8%	126	2.4%	5,244

**Housing Problems by Income**

Table II.19.50, at right, shows the HUD calculated Median Family Income (MFI) for a family of four for Chickasaw County. As can be seen in 2017 the MFI was \$59,600, which compared to 69,900 for the State of Iowa.

Table II.19.51, shows Comprehensive Housing Affordability Strategy (CHAS) data for housing problems by tenure and income. As can be seen there are a total of 335 owner-occupied and 240 renter-occupied households with a cost burden of greater than 30 percent and less than 50 percent. An additional 200 owner-occupied 164 renter-occupied households had a cost burden greater than 50 percent of income. Overall there are 4,270 households without a housing problem.

**Table II.19.50**  
**Median Family Income**  
 Chickasaw County  
 2000–2017 HUD MFI

Year	MFI	State of Iowa MFI
2000	44,100	49,100
2001	47,100	52,500
2002	51,200	53,700
2003	47,300	54,900
2004	47,300	55,800
2005	52,200	57,650
2006	52,200	57,800
2007	52,200	58,100
2008	52,700	58,500
2009	57,200	62,000
2010	57,600	62,400
2011	53,400	64,000
2012	54,100	64,800
2013	53,700	64,700
2014	53,800	65,300
2015	56,000	67,500
2016	57,200	68,400
2017	59,600	69,900

**Table II.19.51**  
**Housing Problems by Income and Tenure**

Chickasaw County  
2010–2014 HUD CHAS Data

Housing Problem	Less Than 30% MFI	30% - 50% MFI	50% - 80% MFI	80% - 100% MFI	Greater than 100% MFI	Total
<b>Owner-Occupied</b>						
Lacking complete plumbing or kitchen facilities	0	4	0	10	4	18
Severely Overcrowded with > 1.51 people per room (and complete kitchen and plumbing)	0	0	0	0	0	0
Overcrowded - With 1.01-1.5 people per room (and none of the above problems)	0	0	4	4	25	33
Housing cost burden greater than 50% of income (and none of the above problems)	120	50	15	0	15	200
Housing cost burden greater than 30% but less than 50% of income (and none of the above problems)	30	105	90	55	55	335
Zero/negative income (and none of the above problems)	4	0	0	0	0	4
Has none of the 4 housing problems	45	345	620	485	2,125	3,620
<b>Total</b>	<b>199</b>	<b>504</b>	<b>729</b>	<b>554</b>	<b>2,224</b>	<b>4,210</b>
<b>Renter-Occupied</b>						
Lacking complete plumbing or kitchen facilities	10	10	10	0	0	30
Severely Overcrowded with > 1.51 people per room (and complete kitchen and plumbing)	0	0	0	0	0	0
Overcrowded - With 1.01-1.5 people per room (and none of the above problems)	0	4	4	0	0	8
Housing cost burden greater than 50% of income (and none of the above problems)	105	55	4	0	0	164
Housing cost burden greater than 30% but less than 50% of income (and none of the above problems)	100	125	15	0	0	240
Zero/negative income (and none of the above problems)	30	0	0	0	0	30
Has none of the 4 housing problems	50	165	200	100	135	650
<b>Total</b>	<b>295</b>	<b>359</b>	<b>233</b>	<b>100</b>	<b>135</b>	<b>1,122</b>
<b>Total</b>						
Lacking complete plumbing or kitchen facilities	10	14	10	10	4	48
Severely Overcrowded with > 1.51 people per room (and complete kitchen and plumbing)	0	0	0	0	0	0
Overcrowded - With 1.01-1.5 people per room (and none of the above problems)	0	4	8	4	25	41
Housing cost burden greater than 50% of income (and none of the above problems)	225	105	19	0	15	364
Housing cost burden greater than 30% but less than 50% of income (and none of the above problems)	130	230	105	55	55	575
Zero/negative income (and none of the above problems)	34	0	0	0	0	34
Has none of the 4 housing problems	95	510	820	585	2,260	4,270
<b>Total</b>	<b>494</b>	<b>863</b>	<b>962</b>	<b>654</b>	<b>2,359</b>	<b>5,332</b>

## Home Mortgage Loans

The FFEIC The Home Mortgage Disclosure Act (HMDA) was enacted by Congress in 1975. Data collected under the HMDA provide a comprehensive portrait of home loan activity, including information pertaining to home purchase loans, home improvement loans, and refinancing. For the analysis below only owner-occupied originated loans for single family units were considered. As can be seen in Table II.19.52, of the 228 loans in 2016, 91 loans were for Home Purchases, 29 were for Home Improvement and 108 were for refinancing.



<b>Table II.19.52</b>				
<b>Owner-Occupied Single Family Home Loans by Loan Type</b>				
Chickasaw County				
2008 – 2016 HMDA Data				
<b>Year</b>	<b>Home Purchase</b>	<b>Home Improvement</b>	<b>Refinancing</b>	<b>Total</b>
2008	54	9	77	140
2009	48	14	103	165
2010	30	9	97	136
2011	37	15	83	135
2012	70	35	144	249
2013	69	24	129	222
2014	80	37	86	203
2015	84	37	112	233
2016	91	29	108	228

Table II.19.53, shows the average loan value by loan type. In 2008, average home purchase loans was \$94,643 in 2012 and \$92,802 in 2016. Overall, average loans were \$95,307 in 2008 and \$98,614 in 2016.

<b>Table II.19.53</b>				
<b>Owner-Occupied Single Family Home Loans by Average Loan Amount</b>				
Chickasaw County				
2008 – 2016 HMDA Data				
<b>Year</b>	<b>Home Purchase</b>	<b>Home Improvement</b>	<b>Refinancing</b>	<b>Total</b>
2008	\$97,426	\$37,667	\$100,558	\$95,307
2009	\$97,729	\$20,500	\$110,903	\$99,400
2010	\$115,567	\$46,556	\$98,629	\$98,919
2011	\$88,459	\$69,133	\$95,169	\$90,437
2012	\$94,643	\$57,686	\$110,250	\$98,474
2013	\$92,899	\$48,500	\$95,690	\$89,721
2014	\$97,625	\$57,919	\$101,349	\$91,966
2015	\$105,250	\$65,108	\$112,366	\$102,296
2016	\$92,802	\$57,966	\$114,426	\$98,614

Table II.19.54, shows the total volume of owner-occupied single family loans. In 2008, average home purchase loans was \$6,625,000 in 2012 and \$8,445,000 in 2016. Overall, average loans were \$13,343,000 in 2008 and \$22,484,000 in 2016.

<b>Table II.19.54</b> <b>Total Volume of Owner-Occupied Single Family Loans</b> Chickasaw County 2008 – 2016 HMDA Data				
Year	Home Purchase	Home Improvement	Refinancing	Total
2008	\$5,261,000	\$339,000	\$7,743,000	\$13,343,000
2009	\$4,691,000	\$287,000	\$11,423,000	\$16,401,000
2010	\$3,467,000	\$419,000	\$9,567,000	\$13,453,000
2011	\$3,273,000	\$1,037,000	\$7,899,000	\$12,209,000
2012	\$6,625,000	\$2,019,000	\$15,876,000	\$24,520,000
2013	\$6,410,000	\$1,164,000	\$12,344,000	\$19,918,000
2014	\$7,810,000	\$2,143,000	\$8,716,000	\$18,669,000
2015	\$8,841,000	\$2,409,000	\$12,585,000	\$23,835,000
2016	\$8,445,000	\$1,681,000	\$12,358,000	\$22,484,000

### Survey of Rental Properties

From September through December of 2017, a telephone survey was conducted with landlords and rental property managers throughout Iowa. Table II.19.55 presents some basic statistics about the completed surveys.

<b>Table II.19.55</b> <b>Survey of Rental Properties</b> Chickasaw County 2017 Survey of Rental Properties				
Year	Completed Surveys	Total Units	Vacancy Rate	Absorption Rate
2017	2	39	12.8	26

Table II.19.56, shows the amount of total and vacant units with their associated vacancy rates. There were 39 apartment units reported in the survey, with 1 of them available, which resulted in a vacancy rate of 2.6 percent. This compares to a statewide vacancy rate of 6.7 percent for apartment units across the state.

<b>Table II.19.56</b> <b>Rental Vacancy Survey by Type</b> Chickasaw County 2017 Survey of Rental Properties			
Unit Type	Total Units	Vacant Units	Vacancy Rate
Single Family	0	0	0%
Apartments	39	1	2.6%
Mobile Homes	0	0	0%
“Other” Units	0	0	0%
Don't Know	0	4	
<b>Total</b>	<b>39</b>	<b>5</b>	<b>12.8%</b>

Table II.19.57, reports units by bedroom size. As can be seen there were 14 two bedroom apartment units. Overall, the 14 two bedroom units accounted for 35.9 percent of all units. Additional details for additional unit types are reported found below.

<b>Table II.19.57</b> <b>Rental Units by Bedroom Size</b> Chickasaw County 2017 Survey of Rental Properties						
Number of Bedrooms	Single Family Units	Apartment Units	Mobile Homes	“Other” Units	Don’t Know	Total
Efficiency	0	0	0	0	.	0
One	0	25	0	0	.	25
Two	0	14	0	0	.	14
Three	0	0	0	0	.	0
Four	0	0	0	0	.	0
Don’t Know	0	0	0	0	0	0
<b>Total</b>	<b>0</b>	<b>39</b>	<b>0</b>	<b>0</b>	<b>0</b>	<b>39</b>

Table II.19.58 displays the vacancy rate of apartment units by the number of bedrooms. The most common apartment units were one-bedroom units, which had a vacancy rate of 0 percent.

<b>Table II.19.58</b> <b>Apartment Units by Bedroom Size</b> Chickasaw County 2017 Survey of Rental Properties			
Number of Bedrooms	Units	Available Units	Vacancy Rates
Efficiency	0	0	0%
One	25	0	0%
Two	14	1	7.1%
Three	0	0	0%
Four	0	0	0%
Don’t know	0	0	0%
<b>Total</b>	<b>39</b>	<b>1</b>	<b>2.6%</b>

Average market-rate rents by unit type are shown in Table II.19.59. Not all respondents were able to disclose the rental amounts for their units, so there may be some statistical aberrations in the computed rental rates, but generally those units with more bedrooms had higher rents.

<b>Table II.19.59</b> <b>Average Market Rate Rents by Bedroom Size</b> Chickasaw County 2017 Survey of Rental Properties					
Number of Bedrooms	Single Family Units	Apartment Units	Mobile Homes	“Other” Units	Total
Efficiency	\$0	\$0	\$0	\$0	\$0
One	\$0	\$398	\$0	\$0	\$398
Two	\$0	\$478	\$0	\$0	\$478
Three	\$0	\$0	\$0	\$0	\$0
Four	\$0	\$0	\$0	\$0	\$0
<b>Total</b>	<b>\$0</b>	<b>\$438</b>	<b>\$0</b>	<b>\$0</b>	<b>\$438</b>



The average rent and availability of apartment units is displayed in Table II.19.60. The most common rent for apartment rents was between less than 500 dollars and the units in this price range had a vacancy rate of 10 percent.

<b>Table II.19.60</b> <b>Apartment Market Rate Rents by Vacancy Status</b> Chickasaw County 2017 Survey of Rental Properties			
Average Rents	Apartment Units	Available Apartment Units	Vacancy Rate
Less Than \$500	10	1	10%
\$500 to \$750	0	0	0%
\$750 to \$1,000	0	0	0%
\$1,000 to \$1,250	0	0	0%
\$1,250 to \$1,500	0	0	0%
Above \$1,500	0	0	0%
Missing	29	0	0%
<b>Total</b>	<b>39</b>	<b>1</b>	<b>2.6%</b>

Respondents were asked if utilities are included in the rent and as shown in Table II.19.61 below 2 respondents, or 100 percent, included some sort of utility in the rent.

<b>Table II.19.61</b> <b>Are there any utilities included with the rent?</b> Chickasaw County 2017 Survey of Rental Properties	
Period	Respondent
Yes	2
No	0
<b>% Offering Utilities</b>	<b>100%</b>

The type of utility included in the rent is shown in Table II.19.62. There were 1 respondent who included electricity, 0 respondents who included natural gas, 2 respondents who included water and sewer and 2 respondents included trash collection in the rent.

<b>Table II.19.62</b> <b>Which utilities are included with the rent?</b> Chickasaw County 2017 Survey of Rental Properties	
Type of Utility Provided	Respondent
Electricity	1
Natural Gas	0
Water/Sewer	2
Trash Collection	2

### Accessible Rental Properties

The survey also asked respondents if any of their units were accessible to persons with disabilities. As can be seen in, Table II.19.63, there were 4 accessible apartment units. Respondents also indicated there were a total of 3 persons with disabilities currently residing in accessible units.

<b>Table II.19.63</b>						
<b>Accessible Units by Bedroom Size</b>						
Chickasaw County						
2017 Survey of Rental Properties						
<b>Number of Bedrooms</b>	<b>Single Family Units</b>	<b>Apartment Units</b>	<b>Mobile Homes</b>	<b>“Other” Units</b>	<b>Don’t Know</b>	<b>Total</b>
Efficiency	0	0	0	0		0
One	0	4	0	0		4
Two	0	0	0	0		0
Three	0	0	0	0		0
Four	0	0	0	0		0
Don’t Know	0	0	0	0	0	0
<b>Total</b>	<b>0</b>	<b>4</b>	<b>0</b>	<b>0</b>	<b>0</b>	<b>4</b>

Table II.19.64, shows the breakdown of accessible and not accessible apartment units by bedroom size. Overall, 10.3 percent of all apartment units were considered accessible by survey respondents.

<b>Table II.19.64</b>				
<b>Apartment Units by Accessibility and Bedroom Size</b>				
Chickasaw County				
2017 Survey of Rental Properties				
<b>Number of Bedrooms</b>	<b>Not Accessible</b>	<b>Accessible Units</b>	<b>Apartment Units</b>	<b>Percentage Accessible</b>
Studio	0	0	0	0%
One	21	4	25	16%
Two	14	0	14	0%
Three	0	0	0	0%
Four	0	0	0	0%
Don’t know	0	0	0	0%
<b>Total</b>	<b>35</b>	<b>4</b>	<b>39</b>	<b>10.3%</b>

## Perceived Need for Rental Units

Table II.19.65, at right, shows the number of survey respondents who keep a waiting list. As can be seen 1 respondent said they keep a waitlist, with an estimated 2 number of persons on the wait list.

Respondents were also asked how they would rate the need for renovating existing units. As shown in Table II.19.66, 1 respondent said there was no need for renovating single family units, with 0 respondents saying there was extreme need for renovating single family units. Likewise, 1 respondent indicated no need for renovating existing apartment units, with 0 respondents saying there was extreme need for renovating existing apartment units.

<b>Table II.19.65</b> <b>Do you keep a waiting list?</b> Chickasaw County 2017 Survey of Rental Properties	
Period	Respondent
Yes	1
No	0
<b>Waitlist Size</b>	<b>2</b>

<b>Table II.19.66</b> <b>How would you rate the need for renovation of existing units in the city?</b> Chickasaw County 2017 Survey of Rental Properties				
Need	Single Family	Apartments	Mobile Homes	Other Units
No Need	1	1	0	0
Low Need	0	0	0	0
Moderate Need	0	0	0	0
High Need	0	0	0	0
Extreme Need	0	0	0	0
<b>Average Need</b>	<b>1</b>	<b>1</b>	<b>0</b>	<b>0</b>

Respondents were also asked how they would rate the need for the constructing new units. As shown in Table II.19.67, 1 respondent said there was no need for new single family units, with 0 respondents saying there was extreme need for constructing new single family units. Likewise, 1 respondent indicated no need for new apartment units, with 0 respondents saying there was extreme need for constructing new apartment units.

<b>Table II.19.67</b> <b>How would you rate the need for construction of new units in the city?</b> Chickasaw County 2017 Survey of Rental Properties				
Need	Single Family	Apartments	Mobile Homes	Other Units
No Need	1	1	0	0
Low Need	0	0	0	0
Moderate Need	0	0	0	0
High Need	0	0	0	0
Extreme Need	0	0	0	0
<b>Average Need</b>	<b>1</b>	<b>1</b>	<b>0</b>	<b>0</b>

The 2017 Housing Needs Forecast reports housing demand projections from 2017 to 2050. Three possible economic futures portraying moderate, strong, and very strong growth were used to create

three forecasts. The strong scenario is the base case, representing conditions as of today. The *moderate growth* scenario forecast projects household growth with the assumption of slower population and employment growth, where the *very strong growth* scenario incorporates assumptions of much stronger employment and population growth over the forecast horizon.

The primary objective of offering three alternative forecasts is to enhance planning capacity and to provide additional tools in order to assist state and local governments in their ongoing housing needs assessment, thereby facilitating informed discussion about housing demand at the local community level. These forecasts prove useful when interpreting the need for new or rehabilitated housing and whether single-family or rental housing activities might be best undertaken.

All three forecasts span the period of 2016 through 2050 and offer predictions of the demand for housing. However, only the strong growth scenario is reported here. The moderate and very strong scenarios are reported in the appendix.

This report uses the modified population projections based on projections released from Woods & Poole Economic, Inc (W&P).

Income categories were calculated using the Housing and Urban Development CHAS (Comprehensive Housing Affordability Strategy) data and are expressed as a percentage of area Median Family Income (MFI). This distribution is assumed to remain constant over the forecast horizon. Homeownership rates were forecasted based on historical trends.

Table II.19.68, shows the *strong growth scenario* for the Chickasaw County. As can be seen there were 4,113 owner-occupied and 1,131 renter-occupied households in 2016, for a total of 5,244 households. In 2030, there will be a projected 5,353 households, of which 4,324 are projected to be owner occupied and the remaining 1,029 are expected to be renter-occupied.

By 2050, there are projected to be 4,186 owner-occupied households, of which 197 owner-occupied households are expected to have incomes of 0-30 percent of MFI and 731 are projected to have incomes of 50.1-80.0 percent of MFI. In 2050, there are projected to be 971 renter households, of which 253 renter households are expected to have incomes between 0 and 30.0 percent of median family income 207 renter households with incomes between 50.1-80.0 percent of MFI. Overall households are projected to reach 5,158 occupied units by 2050, of which 450 are expected to have incomes on between 0 and 30 percent of MFI.

**Table II.19.68**  
**Housing Demand Forecast**  
 Chickasaw County  
 Strong Growth Scenario

<b>Income (% of MFI)</b>	<b>2016</b>	<b>2020</b>	<b>2025</b>	<b>2030</b>	<b>2035</b>	<b>2040</b>	<b>2045</b>	<b>2050</b>
<b>Owner</b>								
0-30%	194	203	204	204	203	201	199	197
30.1-50%	494	519	519	519	517	513	508	502
50.1-80%	719	755	756	755	752	747	740	731
80.1-95%	352	370	370	370	368	366	362	358
95.1-115%	572	601	602	601	599	594	589	582
115+%	1,783	1,874	1,876	1,875	1,867	1,853	1,835	1,815
<b>Total</b>	<b>4,113</b>	<b>4,323</b>	<b>4,328</b>	<b>4,324</b>	<b>4,306</b>	<b>4,274</b>	<b>4,233</b>	<b>4,186</b>
<b>Renter</b>								
0-30%	295	273	271	268	265	262	257	253
30.1-50%	361	334	331	328	325	320	315	310
50.1-80%	240	223	221	219	216	214	210	207
80.1-95%	55	51	51	50	50	49	48	47
95.1-115%	115	107	106	105	104	102	101	99
115+%	65	60	60	59	59	58	57	56
<b>Total</b>	<b>1,131</b>	<b>1,049</b>	<b>1,039</b>	<b>1,029</b>	<b>1,018</b>	<b>1,004</b>	<b>989</b>	<b>971</b>
<b>Total</b>								
0-30%	488	477	474	472	468	463	457	450
30.1-50%	854	853	851	847	841	833	823	812
50.1-80%	959	978	977	974	969	960	950	938
80.1-95%	407	421	421	420	418	415	410	406
95.1-115%	687	708	708	706	702	697	689	681
115+%	1,848	1,935	1,936	1,934	1,925	1,911	1,892	1,871
<b>Total</b>	<b>5,244</b>	<b>5,372</b>	<b>5,367</b>	<b>5,353</b>	<b>5,324</b>	<b>5,279</b>	<b>5,222</b>	<b>5,158</b>

