

**VOLUME II:
LINN COUNTY**

**IOWA STATE
PROFILE**

Please visit the Iowa State Profile Dashboard:

www.westernes.com/Iowa

For and online version of this profile with many additional features including:

- **Mapping**
- **Interactive Charts and Tables**
- **Data Downloads**
- **Interactive Long Read**
- **Interactive Tour**
- **Jurisdiction to Jurisdiction Comparison**
- **Download Additional Reports**
- **And More**



Linn County

DEMOGRAPHICS

Population Estimates

The Census Bureau's current census estimates indicate that Linn County's population increased from 211,226 in 2010 to 221,661 in 2016, or by 4.9 percent. This compares to a statewide population change of 2.9 percent over the period. The number of people from 25 to 34 years of age increased by 4.5 percent, and the number of people from 55 to 64 years of age increased by 15 percent. The white population increased by 2.5 percent, while the black population increased by 35.9 percent. The Hispanic population increased from 5,534 to 7,014 people between 2010 and 2016 or by 26.7 percent. These data are presented in Table II.58.1.

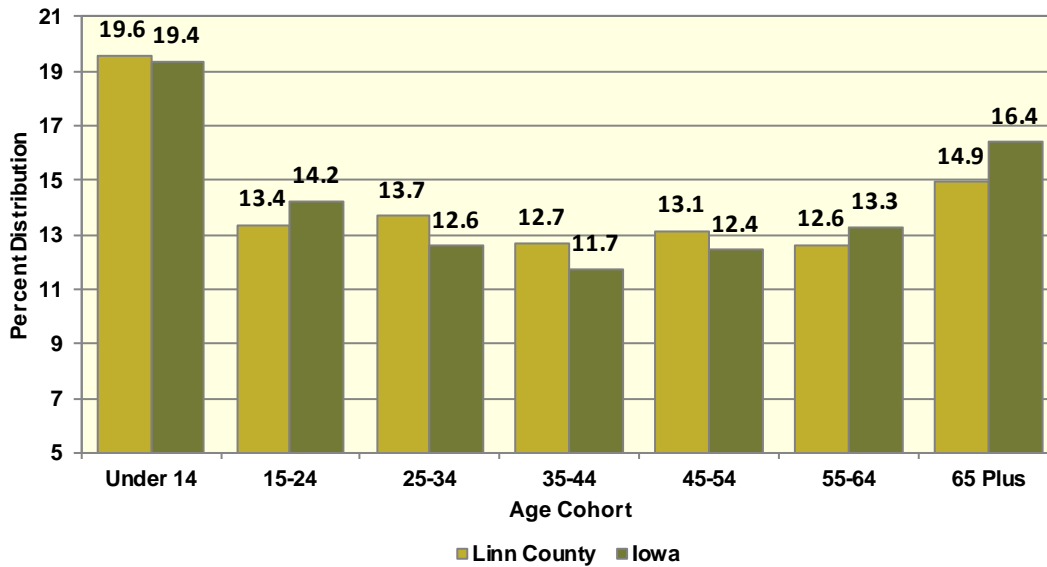
Table II.58.1						
Profile of Population Characteristics						
Linn County vs. State of Iowa						
2010 Census and 2016 Current Census Estimates						
Subject	Linn County			Iowa		
	2010 Census	Jul-16	% Change	2010 Census	Jul-16	% Change
Population	211,226	221,661	4.9%	3,046,355	3,134,693	2.9%
Age						
Under 14 years	43,145	43,412	0.6%	603,673	607,020	0.6%
15 to 24 years	29,382	29,631	0.8%	430,187	445,808	3.6%
25 to 34 years	29,027	30,330	4.5%	382,583	394,373	3.1%
35 to 44 years	27,580	28,092	1.9%	364,548	367,535	0.8%
45 to 54 years	30,253	29,123	-3.7%	439,726	389,744	-11.4%
55 to 64 years	24,351	27,994	15%	372,750	415,998	11.6%
65 and Over	27,488	33,079	20.3%	452,888	514,215	13.5%
Race						
White	193,464	198,317	2.5%	2,839,615	2,864,884	0.9%
Black	8,455	11,487	35.9%	91,695	114,874	25.3%
American Indian and Alaskan Native	624	676	8.3%	13,563	15,924	17.4%
Asian	3,871	5,327	37.6%	54,232	78,735	45.2%
Native Hawaiian or Pacific Islander	202	250	23.8%	2,419	3,592	48.5%
Two or more races	4,610	5,604	21.6%	44,831	56,684	26.4%
Ethnicity (of any race)						
Hispanic or Latino	5,534	7,014	26.7%	151,544	182,606	20.5%

Table II.58.2, presents the population of Linn County by age and gender from the 2010 Census and 2016 current census estimates. The 2010 Census count showed a total of 103,950 males, who accounted for 49.2 percent of the population, and the remaining 50.8 percent, or 107,276 persons, were female. In 2016, the number of males rose to 109,505 persons, and accounted for 49.4 percent of the population, with the remaining 50.6 percent, or 112,156 persons being female.



Table II.58.2 Population by Age and Gender Linn County 2010 Census and Current Census Estimates							
Age	2010 Census			2016 Current Census Estimates			% Change 10-16
	Male	Female	Total	Male	Female	Total	
Under 14 years	21,939	21,206	43,145	22,138	21,274	43,412	0.6%
15 to 24 years	14,801	14,581	29,382	14,918	14,713	29,631	0.8%
25 to 34 years	14,698	14,329	29,027	15,479	14,851	30,330	4.5%
35 to 44 years	13,868	13,712	27,580	14,060	14,032	28,092	1.9%
45 to 54 years	13,868	13,712	27,580	14,060	14,032	28,092	1.9%
55 to 64 years	15,023	15,230	30,253	14,626	14,497	29,123	-3.7%
65 and Over	11,716	15,772	27,488	14,537	18,542	33,079	4.9%
Total	103,950	107,276	211,226	109,505	112,156	221,661	4.9%
% of Total	49.2%	50.8%	.	49.4%	50.6%	.	

Diagram II.58.1
Age Distribution
Linn County
2016 Census Population Estimates



According to data from the Census Bureau, between 1990 and 2000, the population in Linn County increased from 168,767 to 191,701 persons, or by 13.6 percent. Between 2000 and 2010, Linn County population, changed by 19,525 persons, to a total population of 211,226 persons. The most recent estimates indicated that Linn County’s population rose an additional 10,435 persons since the 2010 Census, to 221,661 persons in July 2016.

1990 Census	168,767
Natural Increase 90-00	13,038
Net Migration 90-00	9,896
2000 Census	191,701
Natural Increase 00-09	12,069
Net Migration 00-09	6,447
2009 Population Estimate	210,217
2010 Census	211,226
Natural Increase 10-16	6873
Net Migration 10-16	3,562
2016 Population Estimate	221,661

There are some important implications of these population growth estimates. Total population change is a combination of births, deaths, and the net migration of those arriving in and leaving the state. The result of births minus deaths is termed the *natural increase*. As shown in Table II.58.3, Linn County had a natural increase, of 13,038 persons between 1990 and 2000. During the April 2000 to July 2009 period, Linn County’s natural increase was estimated at 12,069 persons. Between 2010 and 2016, the natural increase was estimated at 6873 persons, and the net migration was 3,562 persons.

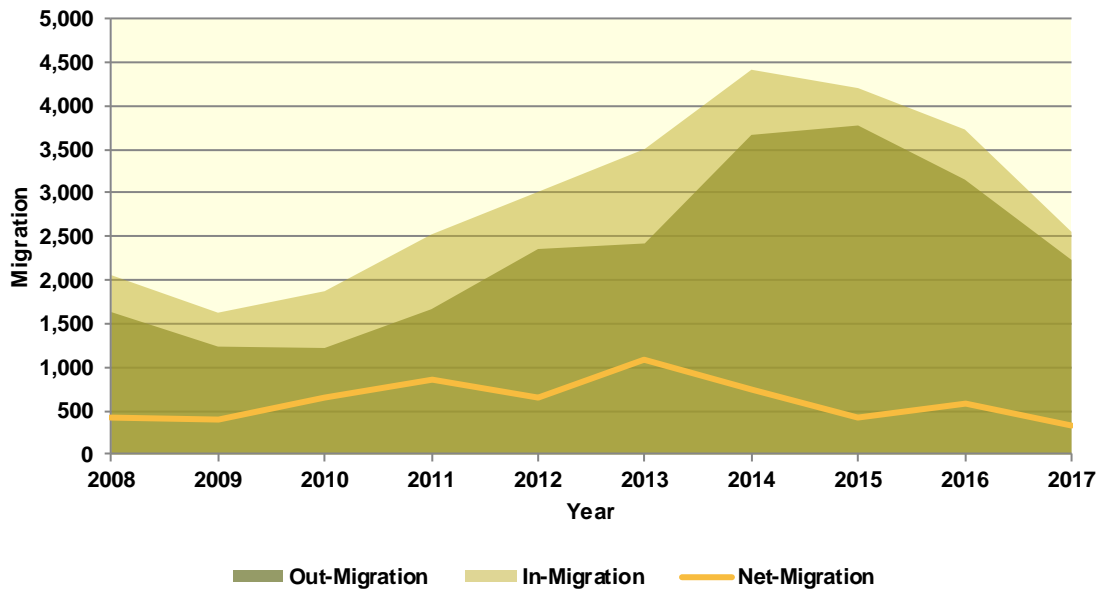
Population Migration Trends

The Iowa Department of Transportation (IOWADOT) collects data on drivers who move to Iowa and exchange licenses from other states as well as those surrendering Iowa driver’s licenses when relocating to a different state. The IOWADOT data do not represent a precise count of migration, as they show only the net change in the number of driver’s licenses, but the data indicate the general direction of population movement.

As can be seen in Table II.58.4 in 2008 there was a total of 2,057 in-migrations with a total of 1,633 out-migrations, which led to a net-migration of 424 persons. The most recent first half 2017 data saw a net-migration of 322 persons, with 2,554 persons entering Linn County and 2,232 persons leaving Linn County.

Diagram II.58.2, shows in and out- migration as a shaded area, with net migration depicted as a line graph. As can be seen the maximum net migration occurred in 2013 with 1,084 people entering and the migration lowest net migration occurred in 2009 with 389 entering Linn County.

Diagram II.58.2
Net In-migration by Gender
 Linn County
 Iowa DOT Data: 2008 – First Half 2017



The IOWADOT data also collects gender and age information. Table II.58.4, shows in- and out-migration by gender. In the most recent first half 2017 data, 43 percent of net-migrants, or 138 persons were male, with the remaining 57 percent, or 184 persons were female.

Table II.58.4										
Net In-migration by Gender										
Linn County										
Iowa DOT Data										
Gender	2008	2009	2010	2011	2012	2013	2014	2015	2016	2017-First Half
In										
Male	901	726	753	853	909	954	1,130	1,119	1,170	722
Female	1,156	900	1,120	1,671	2,104	2,551	3,285	3,085	2,559	1,832
Total	2,057	1,626	1,873	2,524	3,013	3,505	4,415	4,204	3,729	2,554
Out										
Male	749	557	515	583	682	547	894	969	842	584
Female	884	680	706	1,083	1,675	1,874	2,773	2,806	2,312	1,648
Total	1,633	1,237	1,221	1,666	2,357	2,421	3,667	3,775	3,154	2,232
Net										
Male	152	169	238	270	227	407	236	150	328	138
Female	272	220	414	588	429	677	512	279	247	184
Total	424	389	652	858	656	1,084	748	429	575	322

Table II.58.5, shows net-migration for Linn County by age range. The largest age cohort in the most recent 2017 net migration data was those in the age range of 26 to 35, with 93 persons entering Linn County. Those in the age range of 14 to 17 had the lowest levels of net migration, with 2 persons leaving Linn County.

Table II.58.5 Migration by Age Range Linn County Iowa DOT Data										
Age Range	2008	2009	2010	2011	2012	2013	2014	2015	2016	2017 – First Half
In										
14-17	16	12	14	7	8	9	10	9	9	3
18-22	203	189	238	307	375	425	532	545	451	284
23-25	235	194	244	322	394	464	577	622	488	338
26-35	672	531	584	733	941	1,103	1,373	1,290	1,179	837
36-45	452	304	351	497	594	670	890	753	689	455
46-55	289	210	273	412	452	573	676	597	521	382
56-65	136	126	120	167	178	181	258	273	275	164
66 +	54	60	49	79	71	80	99	115	117	91
Total	2,057	1,626	1,873	2,524	3,013	3,505	4,415	4,204	3,729	2,554
Out										
14-17	17	13	16	8	8	5	11	8	13	5
18-22	174	148	124	180	276	271	376	439	364	227
23-25	252	175	199	206	306	348	489	554	487	311
26-35	486	378	367	484	700	760	1,200	1,178	998	744
36-45	292	229	227	344	470	448	684	688	583	431
46-55	223	157	179	248	376	392	575	574	447	315
56-65	138	86	76	147	161	129	248	259	201	155
66 +	51	51	33	49	60	68	84	75	61	44
Total	1,633	1,237	1,221	1,666	2,357	2,421	3,667	3,775	3,154	2,232
Net										
14-17	-1	-1	-2	-1	0	4	-1	1	-4	-2
18-22	29	41	114	127	99	154	156	106	87	57
23-25	-17	19	45	116	88	116	88	68	1	27
26-35	186	153	217	249	241	343	173	112	181	93
36-45	160	75	124	153	124	222	206	65	106	24
46-55	66	53	94	164	76	181	101	23	74	67
56-65	-2	40	44	20	17	52	10	14	74	9
66 +	3	9	16	30	11	12	15	40	56	47
Total	424	389	652	858	656	1,084	748	429	575	322

School Age Enrollment

Table II.58.6, show the school enrollment from the Iowa Department of Education for Linn County. The school enrollment figures below are for both public and private schools. As can be seen below, in 2010 total enrollment was 39,422 students and was 41,438 in 2017, a change of 5.1 percent. Enrollment for students in grades 1 to 5 was 14,636 students in 2010 and 15,032 in 2017, which was a change of 2.7 percent. Likewise, 2010 enrollment for students in grades 9 to 12 was 11,614 and 12,121 in 2017, which was a change of 4.4 percent.

Table II.58.6						
School Enrollment						
Linn County						
Iowa Department of Education						
Year	Pre-K/K	Grades 1 - 5	Grades 6 - 8	Grades 9 - 12	Special Ed.	Total
2000	3,389	13,557	7,467	9,952	4,679	36,029
2001	3,342	13,693	7,471	10,224	1,558	36,288
2002	3,214	13,926	8,109	10,539	235	36,023
2003	3,332	12,921	7,415	10,592	2,003	36,263
2004	3,609	13,532	8,504	10,682	181	36,508
2005	3,877	13,721	8,642	10,790	285	37,030
2006	3,831	13,774	8,437	11,322	280	37,364
2007	4,062	14,036	8,513	11,561	449	38,172
2008	4,022	14,382	8,285	11,682	459	38,371
2009	4,400	14,382	8,279	11,584	871	38,356
2010	4,897	14,636	8,275	11,614	1,464	39,422
2011	5,119	14,654	8,580	11,366	1,716	39,719
2012	5,018	14,544	8,693	11,381	1,586	39,636
2013	5,282	14,540	8,820	11,268	1,657	39,910
2014	5,343	14,624	8,835	11,449	1,692	40,251
2015	5,504	14,633	8,867	11,832	1,830	40,836
2016	5,423	14,888	8,949	11,851	1,774	41,111
2017	5,289	15,032	8,996	12,121	1,862	41,438
% Change 10-17	8%	2.7%	8.7%	4.4%	27.2%	5.1%

Census Demographic Data

In the 1980, 1990, and 2000 decennial censuses, the Census Bureau released several tabulations in addition to the full SF1 100 percent count data including the one-in-six SF3 sample. These additional samples, such as the SF3, asked supplementary questions regarding income and household attributes that were not asked in the 100 percent count. In the 2010 decennial census, the Census Bureau did not collect additional sample data, such as the SF3, and thus many important housing and income concepts are not available in the 2010 Census.

To study these important concepts the Census Bureau distributes the American Community Survey every year to a sample of the population and quantifies the results as one-, three- and five-year averages. The one-year sample only includes responses from the year the survey was implemented, while the five-year sample includes responses over a five-year period. Since the five-year estimates include more responses, the estimates can be tabulated down to the Census tract level, and considered more robust than the one or three year sample estimates.

Population Estimates

Table II.58.7, shows population by age for the 2000 and 2010 Census. The population changed by 10.2 percent overall between 2000 and 2010. Various age cohorts changed at different rates. The elderly population, or persons aged 65 or older, changed by 17.1 percent to a total of 27,488 persons in 2010. Those aged 25 to 34 changed by 5.8 percent, and those aged under 5 changed by 5.5 percent.

Table II.58.7 Population by Age Linn County 2000 & 2010 Census SF1 Data					
Age	2000 Census		2010 Census		% Change 00-10
	Population	% of Total	Population	% of Total	
Under 5	13,425	7%	14,160	6.7%	5.5%
5 to 19	41,056	21.4%	44,328	21%	8%
20 to 24	13,327	7%	14,039	6.6%	5.3%
25 to 34	27,434	14.3%	29,027	13.7%	5.8%
35 to 54	56,671	29.6%	57,833	27.4%	2.1%
55 to 64	16,323	8.5%	24,351	11.5%	49.2%
65 or Older	23,465	12.2%	27,488	13%	17.1%
Total	191,701	100.0%	211,226	100.0%	10.2%

The elderly population is further explored in Table II.58.8. Those aged 65 to 66 changed by 35.8 percent between 2000 and 2010, resulting in a population of 3,512 persons. Those aged 85 or older changed by 31.7 percent during the same time period, and resulted in 4,146 persons over age 85 in 2010.

Table II.58.8 Elderly Population by Age Linn County 2000 & 2010 Census SF1 Data					
Age	2000 Census		2010 Census		% Change 00-10
	Population	% of Total	Population	% of Total	
65 to 66	2,586	11%	3,512	12.8%	35.8%
67 to 69	3,638	15.5%	4,517	16.4%	24.2%
70 to 74	5,641	24%	6,341	23.1%	12.4%
75 to 79	4,970	21.2%	5,038	18.3%	1.4%
80 to 84	3,482	14.8%	3,934	14.3%	13%
85 or Older	3,148	13.4%	4,146	15.1%	31.7%
Total	23,465	100.0%	27,488	100.0%	17.1%

Population by race and ethnicity is shown in Table II.58.9. The white population changed by 6.6 percent between 2000 and 2010, and resulted in representing 90.8 percent of the population in 2010. The black population changed by 69.7 percent, represented 4 percent of the population in 2010. The American Indian and Asian populations represented 0.3 and 1.8 percent, respectively, in 2010. As for ethnicity, the Hispanic population changed by 103.3 percent between 2000 and 2010, compared to the 8.8 percent growth rate for non-Hispanics.

Table II.58.9					
Population by Race and Ethnicity					
Linn County					
2000 & 2010 Census SF1 Data					
Race	2000 Census		2010 Census		% Change 00–10
	Population	% of Total	Population	% of Total	
White	179,999	93.9%	191,884	90.8%	6.6%
Black	4,919	2.6%	8,346	4%	69.7%
American Indian	418	0.2%	565	0.3%	35.2%
Asian	2,634	1.4%	3,806	1.8%	44.5%
Native Hawaiian/ Pacific Islander	91	0%	180	0.1%	97.8%
Other	881	0.5%	1,512	0.7%	71.6%
Two or More Races	2,759	1.4%	4,933	2.3%	78.8%
Total	191,701	100.0%	211,226	100.0%	10.2%
Hispanic	2,722	1.4%	5,534	2.6%	103.3%
Non-Hispanic	188,979	98.6%	205,692	97.4%	8.8%

Population by race and ethnicity through 2016 is shown in Table II.58.10. The white population represented 89.5 percent of the population in 2016, compared with black households accounting for 4.7 percent of the population. Hispanic households represented 3 percent of the population in 2016.

Table II.58.10				
Population by Race and Ethnicity				
Linn County				
2010 Census & 2016 Five-Year ACS				
Race	2010 Census		2016 Five-Year ACS	
	Population	% of Total	Population	% of Total
White	191,884	90.8%	195,251	89.5%
Black	8,346	4%	10,174	4.7%
American Indian	565	0.3%	416	0.2%
Asian	3,806	1.8%	4,667	2.1%
Native Hawaiian/ Pacific Islander	180	0.1%	60	0%
Other	1,512	0.7%	1,637	0.8%
Two or More Races	4,933	2.3%	5,871	2.7%
Total	211,226	100.0%	218,076	100.0%
Non-Hispanic	205,692	97.4%	211,549	97%
Hispanic	5,534	2.6%	6,527	3%

The population by race is broken down further by ethnicity in Table II.58.11. While the white non-Hispanic population changed by 5.7 percent between 2000 and 2010, the white Hispanic population changed by 112.4 percent. The black non-Hispanic population changed by 68 percent, while the black Hispanic population changed by 200 percent.

Table II.58.11					
Population by Race and Ethnicity					
Linn County					
2000 & 2010 Census Data					
Race	2000		2010 Census		% Change 00 - 10
	Population	% of Total	Population	% of Total	
Non-Hispanic					
White	178,449	94.4%	188,592	91.7%	5.7%
Black	4,857	2.6%	8,160	4%	68%
American Indian	383	0.2%	479	0.2%	25.1%
Asian	2,614	1.4%	3,783	1.8%	44.7%
Native Hawaiian/ Pacific Islander	89	0%	162	0.1%	82%
Other	188	0.1%	157	0.1%	-16.5%
Two or More Races	2,399	1.3%	4,359	2.1%	81.7%
Total Non-Hispanic	188,979	100.0%	205,692	100.0%	8.8%
Hispanic					
White	1,550	56.9%	3,292	59.5%	112.4%
Black	62	2.3%	186	3.4%	200%
American Indian	35	1.3%	86	1.6%	145.7%
Asian	20	0.7%	23	0.4%	15%
Native Hawaiian/ Pacific Islander	2	0.1%	18	0.3%	800%
Other	693	25.5%	1,355	24.5%	95.5%
Two or More Races	360	13.2%	574	10.4%	59.4%
Total Hispanic	2,722	100.0%	5,534	100.0%	103.3%
Total Population	191,701	100.0%	211,226	100.0%	10.2%

The change in race and ethnicity between 2010 and 2016 is shown in Table II.58.12. During this time, the total non-Hispanic population was 211,549 persons in 2016. The Hispanic population was 6,527.

Table II.58.12				
Population by Race and Ethnicity				
Linn County				
2010 Census & 2016 Five-Year ACS				
Race	2010 Census		2016 Five-Year ACS	
	Population	% of Total	Population	% of Total
Non-Hispanic				
White	188,592	91.7%	191,321	90.4%
Black	8,160	4%	9,802	4.6%
American Indian	479	0.2%	373	0.2%
Asian	3,783	1.8%	4,629	2.2%
Native Hawaiian/ Pacific Islander	162	0.1%	49	0%
Other	157	0.1%	164	0.1%
Two or More Races	4,359	2.1%	5,211	2.5%
Total Non-Hispanic	205,692	100.0%	211,549	100.0%
Hispanic				
White	3,292	59.5%	3,930	60.2%
Black	186	3.4%	372	5.7%
American Indian	86	1.6%	43	0.7%
Asian	23	0.4%	38	0.6%
Native Hawaiian/ Pacific Islander	18	0.3%	11	0.2%
Other	1,355	24.5%	1,473	22.6%
Two or More Races	574	10.4%	660	10.1%
Total Non-Hispanic	5,534	100.0	6,527	100.0%
Total Population	211,226	100.0%	218,076	100.0%

Households by type and tenure are shown in Table II.58.13. Family households represented 62.8 percent of households, while non-family households accounted for 37.2 percent. These changed from 62.9 and 37.1 percent, respectively.

Table II.58.13				
Household Type by Tenure				
Linn County				
2010 Census SF1 & 2016 Five-Year ACS Data				
Household Type	2010 Census		2016 Five-Year ACS	
	Households	Households	Households	% of Total
Family Households	54,169	62.9%	55,227	62.8%
Married-Couple Family	42,071	77.7%	43,805	79.3%
Owner-Occupied	38,168	90.7%	39,340	89.8%
Renter-Occupied	3,903	9.3%	4,465	10.2%
Other Family	12,098	22.3%	11,422	21.9%
Male Householder, No Spouse Present	3,535	29.2%	3,518	30.9%
Owner-Occupied	2,274	64.3%	2,386	67.8%
Renter-Occupied	1,261	35.7%	1,132	32.2%
Female Householder, No Spouse Present	8,563	70.8%	7,904	75%
Owner-Occupied	4,755	55.5%	4,419	55.9%
Renter-Occupied	3,808	44.5%	3,485	44.1%
Non-Family Households	31,965	37.1%	32,779	37.2%
Owner-Occupied	17,399	54.4%	18,513	56.5%
Renter-Occupied	14,566	45.6%	14,266	43.5%
Total	86,134	100.0%	88,006	100.0%

The group quarters population was 5,166 in 2010, compared to 5,053 in 2000. Institutionalized populations experienced a 12.8 percent change between 2000 and 2010. Non-institutionalized populations experienced a -3.9 percent change during this same time period.

Table II.58.14					
Group Quarters Population					
Linn County					
2000 & 2010 Census SF1 Data					
Group Quarters Type	2000 Census		2010 Census		% Change 00-10
	Population	% of Total	Population	% of Total	
Institutionalized					
Correctional Institutions	399	21.5%	482	23%	20.8%
Juvenile Facilities	.	.	247	11.8%	.
Nursing Homes	1,415	76.2%	1,247	59.6%	-11.9%
Other Institutions	43	2.3%	118	5.6%	174.4%
Total	1,857	100.0%	2,094	100.0%	12.8%
Noninstitutionalized					
College Dormitories	2,118	66.3%	2,368	77.1%	11.8%
Military Quarters	0	0%	0	0%	0%
Other Noninstitutionalized	1,078	33.7%	704	22.9%	-34.7%
Total	3,196	100.0%	3,072	100.0%	-3.9%
Group Quarters Population	5,053	100.0%	5,166	100.0%	2.2%

The number of foreign born persons are shown in Table II.58.15. An estimated 0.5 percent of the population was born in India, some 0.5 percent were born in Mexico, and another 0.4 percent were born in Korea.

Table II.58.15 Place of Birth for the Foreign-Born Population Linn County 2016 Five-Year ACS			
Number	County	Number of Person	Percent of Total Population
#1 country of origin	India	1,093	0.5%
#2 country of origin	Mexico	982	0.5%
#3 country of origin	Korea	794	0.4%
#4 country of origin	China excluding Hong Kong and Taiwan	433	0.2%
#5 country of origin	Canada	377	0.2%
#6 country of origin	Vietnam	368	0.2%
#7 country of origin	Africa n.e.c	267	0.1%
#8 country of origin	Philippines	267	0.1%
#9 country of origin	Haiti	253	0.1%
#10 country of origin	Other Eastern Africa	179	0.1%

Limited English Proficiency and the language spoken at home are shown in Table II.58.16. An estimated 0.6 percent of the population speaks Spanish at home, followed by 0.2 percent speaking French, Haitian, or Cajun.

Table II.58.16 Limited English Proficiency and Language Spoken at Home Linn County 2016 Five-Year ACS			
Number	County	Number of Person	Percent of Total Population
#1 LEP Language	Spanish	1,258	0.6%
#2 LEP Language	French, Haitian, or Cajun	416	0.2%
#3 LEP Language	Other Asian and Pacific Island languages	390	0.2%
#4 LEP Language	Chinese	292	0.1%
#5 LEP Language	Vietnamese	231	0.1%
#6 LEP Language	Korean	224	0.1%
#7 LEP Language	Other and unspecified languages	195	0.1%
#8 LEP Language	Other Indo-European languages	171	0.1%
#9 LEP Language	Arabic	138	0.1%
#10 LEP Language	Russian, Polish, or other Slavic languages	108	0.1%

Disability

The disability rate from the 2000 Census is shown in Table II.58.17. Some 15.1 percent of the population was disabled in 2000, or a total of 26,664 persons. The disability rate was highest for those over 65, with 35.2 percent disabled.

Table II.58.17		
Disability by Age		
Linn County 2000 Census SF3 Data		
Age	Total	
	Disabled Population	Disability Rate
5 to 15	2,127	7.1%
16 to 64	16,756	13.4%
65 and older	7,781	35.2%
Total	26,664	15.1%

Table II.58.18 shows disability by type in 2000. There were 11,130 physical disabilities in 2000, some 9,902 employment disabilities, and 7,919 go-outside-home disabilities.

Table II.58.18	
Total Disabilities Tallied: Aged 5 and Older	
Linn County 2000 Census SF3 Data	
Disability Type	Population
Sensory disability	5,507
Physical disability	11,130
Mental disability	8,441
Self-care disability	3,197
Employment disability	9,902
Go-outside-home disability	7,919
Total	46,096

Disability by age, as estimated by the 2016 ACS, is shown in Table II.58.19. The disability rate for females was 10.2 percent, compared to 10.4 percent for males. The disability rate changed precipitously higher with age, with 39.4 percent of those over 75 experiencing a disability.

Table II.58.19						
Disability by Age						
Linn County 2016 Five-Year ACS Data						
Age	Male		Female		Total	
	Disabled Population	Disability Rate	Disabled Population	Disability Rate	Disabled Population	Disability Rate
Under 5	101	1.4%	4	0.1%	105	0.7%
5 to 17	1,082	5.6%	924	5%	2,006	5.3%
18 to 34	1,867	7.4%	1,092	4.4%	2,959	5.9%
35 to 64	3,973	9.5%	4,491	10.6%	8,464	10.1%
65 to 74	1,783	22.8%	1,677	18.8%	3,460	20.6%
75 or Older	2,293	42.3%	2,946	37.4%	5,239	39.4%
Total	11,099	10.4%	11,134	10.2%	22,233	10.3%

The number of disabilities by type, as estimated by the 2016 ACS, is shown in Table II.58.20. Some 5 percent have an ambulatory disability, 4.2 have an independent living disability, and 1.7 percent have a self-care disability.

Table II.58.20		
Total Disabilities Tallied: Aged 5 and Older		
Linn County 2016 Five-Year ACS		
Disability Type	Population with Disability	Percent with Disability
Hearing disability	6,746	3.1%
Vision disability	3,542	1.6%
Cognitive disability	9,201	4.6%
Ambulatory disability	10,071	5%
Self-Care disability	3,383	1.7%
Independent living disability	6,969	4.2%

Education

Education and employment data, as estimated by the 2016 ACS, is presented in Table II.58.21. In 2016, some 115,634 persons were employed and 5,111 were unemployed. This totaled a labor force of 120,745 persons. The unemployment rate for Linn County was estimated to be 4.2 percent in 2016.

Table II.58.21	
Employment, Labor Force and Unemployment	
Linn County 2016 Five-Year ACS Data	
Employment Status	2016 Five-Year ACS
Employed	115,634
Unemployed	5,111
Labor Force	120,745
Unemployment Rate	4.2%

In 2016, 95.2 percent of households in Linn County had a high school education or greater.

Table II.58.22	
High School or Greater Education	
Linn County 2016 Five-Year ACS Data	
Education Level	Households
High School or Greater	83,811
Total Households	88,006
Percent High School or Above	95.2%

As seen in Table II.58.23, some 26.9 percent of the population had a high school diploma or equivalent, another 37.7 percent have some college, 20.6 percent have a Bachelor's Degree, and 9 percent of the population had a graduate or professional degree.

Table II.58.23		
Educational Attainment		
Linn County 2016 Five-Year ACS Data		
Education Level	Population	Percent
Less Than High School	9,655	5.8%
High School or Equivalent	44,731	26.9%
Some College or Associates Degree	62,531	37.7%
Bachelor's Degree	34,208	20.6%
Graduate or Professional Degree	14,861	9%
Total Population Above 18 years	165,986	100.0%



ECONOMICS

Labor Force

Table II.58.24, shows the labor force statistics for Linn County from 1990 to the present. Over the entire series the lowest unemployment rate occurred in 1999 with a rate of 1.8 percent. The highest level of unemployment occurred during 2009 rising to a rate of 6.1 percent. This compared to a statewide low of 2.6 in 1999 and statewide high of 6.4 percent in 2009. Over the last year, the unemployment rate in Linn County decreased from 3.9 percent in 2015 to 3.7 percent in 2016, which compared to a statewide decrease to 3.7 percent.

Table II.58.24 Labor Force Statistics Linn County 1990 - 2016 BLS Data					
Year	Linn County				Statewide Unemployment Rate
	Unemployment	Employment	Labor Force	Unemployment Rate	
1990	5,487	91,425	96,912	5.7%	4.4%
1991	4,776	92,264	97,040	4.9%	4.7%
1992	4,015	95,936	99,951	4%	4.5%
1993	3,587	101,140	104,727	3.4%	4%
1994	3,154	103,704	106,858	3%	3.5%
1995	2,983	105,909	108,892	2.7%	3.4%
1996	3,022	107,138	110,160	2.7%	3.5%
1997	2,698	107,815	110,513	2.4%	3.1%
1998	2,119	110,403	112,522	1.9%	2.7%
1999	2,112	112,439	114,551	1.8%	2.6%
2000	2,500	108,407	110,907	2.3%	2.6%
2001	3,529	109,057	112,586	3.1%	3.3%
2002	5,162	110,206	115,368	4.5%	4%
2003	5,442	106,753	112,195	4.9%	4.5%
2004	5,190	105,980	111,170	4.7%	4.5%
2005	4,844	108,404	113,248	4.3%	4.3%
2006	4,232	112,017	116,249	3.6%	3.7%
2007	4,327	113,836	118,163	3.7%	3.7%
2008	4,932	116,264	121,196	4.1%	4.2%
2009	7,464	115,728	123,192	6.1%	6.4%
2010	7,182	112,941	120,123	6%	6%
2011	6,779	112,600	119,379	5.7%	5.5%
2012	6,204	112,687	118,891	5.2%	5%
2013	6,020	113,909	119,929	5%	4.7%
2014	5,365	116,047	121,412	4.4%	4.3%
2015	4,635	115,730	120,365	3.9%	3.8%
2016	4,427	114,542	118,969	3.7%	3.7%

Diagram II.58.3, shows the employment and labor force for Linn County. The difference between the two lines represents the number of unemployed persons. In the most recent year, employment stood at 114,542 persons, with the labor force reaching 118,969, indicating there were a total of 4,427 unemployed persons.

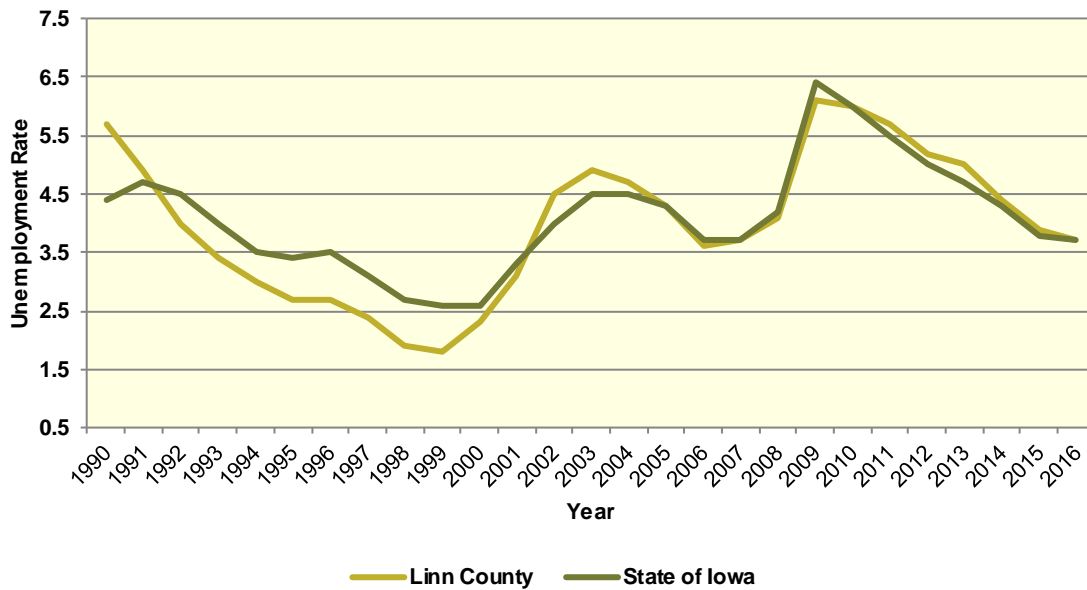
Diagram II.58.3
Employment and Labor Force
 Linn County
 1990 – 2016 BLS Data



Unemployment

Diagram II.58.4, shows the unemployment rate for both the State and Linn County. During the 1990’s the average rate for Linn County was 3.2 percent, which compared to 3.6 percent statewide. Between 2000 and 2010 the unemployment rate had an average of 4.1 percent, which compared to 4.1 percent statewide. Since 2010, the average unemployment rate was 4.8 percent. Over the course of the entire period the Linn County had an average unemployment rate that lower than the State, 4 percent for Linn County, versus 4.1 statewide.

Diagram II.58.4
Annual Unemployment Rate
 Linn County
 1990 – 2016 BLS Data



Earnings and Employment

The Bureau of Economic Analysis (B.E.A.) produces regional economic accounts, which provide a consistent framework for analyzing and comparing individual state and local area economies. Table II.58.25, shows total real earnings by industry for Linn County. In the most recent 2016 estimate, the manufacturing industry had the largest total real earnings, with total real earnings reaching \$1,883,867,000. Between 2015 and 2016 the forestry, fishing, and related activities industry saw the largest percentage increase, rising by 14.1 percent.

Table II.58.25
Real Earnings by Industry
 Linn County
 BEA Table CA-5N Data (1,000's of 2016 Dollars)

NAICS Categories	2001	2010	2011	2012	2013	2014	2015	2016	% Change 15-16
Farm earnings	28,012	26,188	65,787	44,922	82,292	28,283	32,938	26,341	-20
Forestry, fishing, related activities, and other	3,174	3,974	3,710	4,071	3,124	2,655	2,644	3,017	14.1
Mining	3,476	6,288	5,744	5,889	5,721	6,558	7,683	7,782	1.3
Utilities	137,259	203,932	200,360	188,740	181,810	206,157	193,785	206,128	6.4
Construction	570,357	557,858	537,558	565,872	563,798	642,061	618,673	648,726	4.9
Manufacturing	1,723,408	1,845,873	1,939,638	1,921,294	1,935,206	1,937,099	1,922,661	1,883,867	-2
Wholesale trade	347,512	343,565	381,166	429,018	424,286	437,724	426,982	453,563	6.2
Retail trade	491,234	491,079	512,994	537,042	462,596	469,728	467,606	481,774	3
Transportation and warehousing	325,505	342,451	364,841	369,631	428,575	441,102	515,147	474,159	-8
Information	459,039	350,411	391,866	362,348	361,354	367,086	354,393	343,588	-3
Finance and insurance	512,512	709,062	649,294	687,380	685,842	714,586	743,239	813,901	9.5
Real estate and rental and leasing	134,543	139,328	114,437	119,173	153,491	145,218	153,501	113,558	-26
Professional and technical services	388,619	421,377	440,383	440,724	425,310	445,403	474,797	480,536	1.2
Management of companies and enterprises	20,299	44,017	75,746	90,684	84,561	89,882	99,412	108,084	8.7
Administrative and waste services	346,346	327,812	318,274	346,820	339,962	352,791	301,871	295,863	-2
Educational services	83,002	112,163	114,935	122,882	115,820	117,498	114,348	121,075	5.9
Health care and social assistance	670,180	897,110	904,488	930,738	921,714	928,010	977,407	1,007,364	3.1
Arts, entertainment, and recreation	31,903	40,579	41,627	45,969	46,348	50,525	52,498	50,487	-3.8
Accommodation and food services	182,516	178,101	180,535	191,960	199,794	208,421	214,290	220,020	2.7
Other services, except public administration	259,454	240,863	244,037	274,281	269,041	283,196	289,295	296,613	2.5
Government and government enterprises	697,251	919,825	889,084	879,706	901,477	908,365	937,694	938,603	0.1
Total	7,415,599	8,201,856	8,376,505	8,559,144	8,592,121	8,782,346	8,900,864	8,975,049	0.8



Table II.58.26, shows the total employment by industry for the Linn County. The most recent estimates show the manufacturing industry was the largest employer in Linn County, with employment reaching 18,405 jobs in 2016. Between 2015 and 2016 the management of companies and enterprises industry saw the largest percentage increase, rising by 10.9 percent.

Table II.58.26
Employment by Industry
 Linn County
 BEA Table CA25 Data

NAICS Categories	2001	2010	2011	2012	2013	2014	2015	2016	% Change 15-16
Farm earnings	1,621	1,377	1,394	1,373	1,428	1,359	1,414	1,401	-0.9
Forestry, fishing, related activities, and other	223	247	242	216	243	252	241	244	1.2
Mining	89	187	172	207	203	191	220	215	-2.3
Utilities	1,224	1,565	1,491	1,410	1,387	1,420	1,444	1,435	-0.6
Construction	9,077	8,523	8,240	8,334	8,325	9,156	9,005	9,151	1.6
Manufacturing	20,452	19,293	19,920	19,612	19,055	18,988	18,922	18,405	-2.7
Wholesale trade	5,292	4,840	4,909	5,147	5,243	5,458	5,464	5,630	3
Retail trade	16,919	16,926	17,353	17,758	16,027	16,134	16,684	16,861	1.1
Transportation and warehousing	6,483	7,536	8,143	8,215	9,900	9,811	10,580	10,324	-2.4
Information	7,003	5,074	5,302	5,179	5,182	5,038	4,753	4,511	-5.1
Finance and insurance	7,904	10,275	10,401	10,376	10,690	10,766	11,044	11,579	4.8
Real estate and rental and leasing	4,501	6,371	6,330	6,091	6,281	6,477	6,643	6,467	-2.6
Professional and technical services	6,169	6,632	6,720	6,480	6,521	6,593	6,890	7,030	2
Management of companies and enterprises	163	571	961	969	1,028	1,164	1,235	1,370	10.9
Administrative and waste services	10,025	9,308	9,086	9,431	9,471	9,673	9,078	9,100	0.2
Educational services	2,888	3,775	3,927	4,069	4,103	4,177	4,189	4,234	1.1
Health care and social assistance	13,394	16,551	16,603	16,965	17,208	16,997	17,239	17,707	2.7
Arts, entertainment, and recreation	2,105	2,721	2,909	2,967	3,013	3,170	3,190	3,194	0.1
Accommodation and food services	8,367	9,251	9,099	9,283	9,465	9,571	9,838	9,879	0.4
Other services, except public administration	7,280	7,442	7,628	7,698	7,753	7,988	8,285	8,369	1
Government and government enterprises	13,144	15,062	14,893	14,906	14,667	14,520	14,466	14,552	0.6
Total	144,323	153,527	155,723	156,686	157,193	158,903	160,824	161,658	0.5



Table II.58.27, shows the real average earnings per job by industry for Linn County. These figures are calculated by dividing the total real earning displayed in Tables II.58.25 and II.58.26, by industry. In 2016, the utilities industry had the highest average earnings reaching 143,643 dollars. Between 2015 and 2016 the forestry, fishing, and related activities industry saw the largest percentage increase, rising by 12.7 percent.

Table II.58.27
Real Earnings Per Job by Industry
 Linn County
 BEA Table CA5N and CA25 Data

NAICS Categories	2001	2010	2011	2012	2013	2014	2015	2016	% Change 15-16
Farm earnings	17,281	19,019	47,193	32,718	57,628	20,811	23,294	18,802	-19.3
Forestry, fishing, related activities, and other	14,232	16,091	15,330	18,845	12,857	10,537	10,973	12,365	12.7
Mining	39,053	33,623	33,397	28,450	28,181	34,336	34,922	36,195	3.6
Utilities	112,140	130,308	134,380	133,858	131,081	145,181	134,200	143,643	7
Construction	62,835	65,453	65,238	67,899	67,723	70,125	68,703	70,891	3.2
Manufacturing	84,266	95,676	97,371	97,965	101,559	102,017	101,610	102,356	0.7
Wholesale trade	65,667	70,984	77,646	83,353	80,924	80,199	78,145	80,562	3.1
Retail trade	29,034	29,013	29,562	30,242	28,864	29,114	28,027	28,573	1.9
Transportation and warehousing	50,209	45,442	44,804	44,995	43,290	44,960	48,691	45,928	-5.7
Information	65,549	69,060	73,909	69,965	69,733	72,863	74,562	76,167	2.2
Finance and insurance	64,842	69,008	62,426	66,247	64,157	66,374	67,298	70,291	4.4
Real estate and rental and leasing	29,892	21,869	18,078	19,565	24,437	22,421	23,107	17,560	-24
Professional and technical services	62,995	63,537	65,533	68,013	65,222	67,557	68,911	68,355	-0.8
Management of companies and enterprises	124,536	77,088	78,820	93,585	82,257	77,218	80,496	78,893	-2
Administrative and waste services	34,548	35,218	35,029	36,774	35,895	36,472	33,253	32,512	-2.2
Educational services	28,740	29,712	29,268	30,200	28,228	28,130	27,297	28,596	4.8
Health care and social assistance	50,036	54,203	54,477	54,862	53,563	54,598	56,697	56,891	0.3
Arts, entertainment, and recreation	15,156	14,913	14,310	15,493	15,383	15,939	16,457	15,807	-4
Accommodation and food services	21,814	19,252	19,841	20,679	21,109	21,776	21,782	22,271	2.2
Other services, except public administration	35,639	32,365	31,992	35,630	34,702	35,453	34,918	35,442	1.5
Government and government enterprises	53,047	61,069	59,698	59,017	61,463	62,560	64,821	64,500	-0.5
Total	51,382	53,423	53,791	54,626	54,660	55,269	55,345	55,519	0.3

Table II.58.28 shows total employment and real personal income for the years of 1969 to 2016. As can be seen in total real personal income in 2016, comprising all wage and salary earnings, proprietorship income, dividends, interest, rents, and transfer payments, was \$10,861,852,000 a 0.9 percent change between 2015 and 2016. Table II.58.28, shows further annual data for the years 1969 through 2016. In 2010, total employment was 153,527 and 161,658 in 2016, which a change of 0.5 percent over this period.

Table II.58.28
Total Employment and Real Personal Income
 Linn County
 BEA Data 1969 Through 2015

Year	1,000s of 2016 Dollars						Per Capita Income	Total Employment	Average Real Earnings Per Job
	Earnings	Social Security Contributions	Residents Adjustments	Dividends, Interest, Rents	Transfer Payments	Personal Income			
1969	3,087,549	232,739	-157,199	507,858	208,744	3,414,212	21,123	82,906	37,240
1970	3,062,608	226,233	-140,705	530,313	237,847	3,463,831	21,194	80,278	38,151
1971	3,027,095	233,026	-142,169	543,482	266,518	3,461,899	21,010	78,372	38,627
1972	3,137,278	256,417	-151,316	559,822	282,579	3,571,946	21,620	80,325	39,058
1973	3,368,235	316,792	-166,479	587,584	307,647	3,780,195	22,983	84,290	39,962
1974	3,429,181	335,575	-177,873	616,918	328,195	3,860,846	23,304	87,897	39,014
1975	3,424,929	327,221	-178,824	640,860	378,920	3,938,664	23,557	88,282	38,795
1976	3,630,589	355,338	-195,278	649,963	395,419	4,125,355	24,523	90,908	39,936
1977	3,751,132	366,026	-207,739	682,268	386,175	4,245,810	25,392	92,980	40,343
1978	3,968,960	401,366	-233,231	707,253	391,642	4,433,257	26,473	96,259	41,233
1979	4,188,993	443,548	-262,480	737,714	408,185	4,628,864	27,569	102,570	40,840
1980	4,031,582	424,194	-258,390	808,935	455,588	4,613,521	27,195	101,456	39,736
1981	3,899,090	433,066	-249,809	915,388	467,997	4,599,600	27,255	98,478	39,593
1982	3,620,175	407,483	-230,136	1,035,863	513,653	4,532,072	27,130	93,931	38,540
1983	3,568,533	405,218	-215,171	1,009,673	526,515	4,484,332	27,110	93,297	38,250
1984	3,742,761	430,784	-213,994	1,069,078	507,213	4,674,274	28,286	95,586	39,156
1985	3,900,358	455,541	-233,150	1,072,044	518,551	4,802,262	29,136	98,199	39,720
1986	4,063,510	480,733	-244,357	1,076,370	535,204	4,949,994	30,151	100,248	40,534
1987	4,314,859	505,658	-261,887	1,066,270	534,042	5,147,627	31,325	102,732	42,001
1988	4,478,403	543,360	-272,330	1,073,711	548,087	5,284,511	31,839	107,968	41,480
1989	4,710,140	561,073	-280,550	1,170,758	560,455	5,599,730	33,390	111,960	42,070
1990	4,814,471	592,331	-292,794	1,134,311	598,468	5,662,124	33,445	113,365	42,468
1991	4,821,239	601,245	-293,869	1,134,654	620,186	5,680,964	33,159	114,718	42,027
1992	5,015,880	618,124	-307,383	1,116,254	659,656	5,866,282	33,659	115,694	43,354
1993	5,188,755	649,079	-332,744	1,121,425	673,572	6,001,930	33,950	118,665	43,727
1994	5,504,533	692,740	-366,094	1,150,175	693,302	6,289,175	35,123	122,403	44,971
1995	5,702,938	720,781	-409,358	1,251,258	721,598	6,545,655	35,991	128,016	44,548
1996	5,890,051	717,714	-430,497	1,327,399	750,699	6,819,938	37,233	130,556	45,115
1997	6,134,953	765,299	-474,826	1,443,717	764,916	7,103,461	38,304	133,438	45,976
1998	6,858,358	846,402	-545,020	1,494,922	780,113	7,741,971	41,354	137,144	50,008
1999	7,275,707	886,107	-593,746	1,452,737	807,962	8,056,553	42,418	141,571	51,392
2000	7,564,390	911,898	-676,607	1,534,558	849,168	8,359,611	43,457	144,342	52,406
2001	7,415,599	889,380	-667,222	1,489,438	921,963	8,270,399	42,552	144,323	51,383
2002	7,242,534	866,149	-662,274	1,547,889	1,024,991	8,286,993	42,283	141,422	51,212
2003	7,294,304	877,790	-674,411	1,519,364	1,017,651	8,279,119	42,043	140,369	51,966
2004	7,515,044	889,635	-697,089	1,459,739	1,025,113	8,413,172	42,423	142,670	52,675
2005	7,581,152	904,941	-715,682	1,426,814	1,077,192	8,464,535	42,239	145,241	52,197
2006	7,670,321	915,371	-724,874	1,540,257	1,145,740	8,716,073	42,998	148,604	51,616
2007	8,011,288	957,809	-755,967	1,670,345	1,190,624	9,158,481	44,493	152,466	52,545
2008	8,291,606	999,175	-778,201	1,725,727	1,345,505	9,585,462	45,961	154,905	53,527
2009	8,085,982	979,260	-674,288	1,602,525	1,441,472	9,476,432	45,080	153,730	52,599
2010	8,201,856	1,004,130	-649,974	1,565,739	1,528,525	9,642,017	45,550	153,527	53,423
2011	8,376,505	921,773	-719,967	1,666,878	1,527,795	9,929,438	46,395	155,723	53,791
2012	8,559,144	921,765	-710,962	1,876,599	1,508,139	10,311,156	47,902	156,686	54,626
2013	8,592,121	1,036,157	-655,600	1,792,301	1,512,284	10,204,949	47,228	157,193	54,660
2014	8,782,346	1,052,816	-713,068	1,840,592	1,582,956	10,440,010	47,978	158,903	55,269
2015	8,900,864	1,065,847	-672,125	1,924,024	1,673,573	10,760,490	48,957	160,824	55,345
2016	8,975,049	1,088,368	-625,813	1,910,489	1,690,495	10,861,852	49,002	161,658	55,519

Diagram II.58.5, shows real average earnings per job for Linn County from 1990 to 2016. Over this period the average earning per job for Linn County was \$50,309, which was higher than the statewide average of \$43,526 over the same period.

Diagram II.58.5
Real Average Earnings Per Job
 Linn County
 BEA Data 1990 - 2016

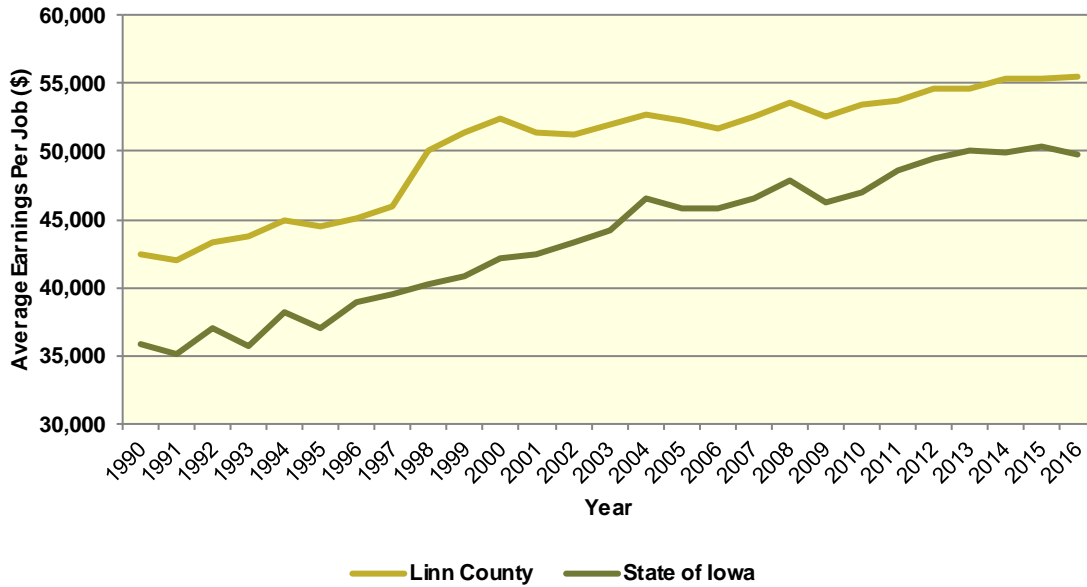
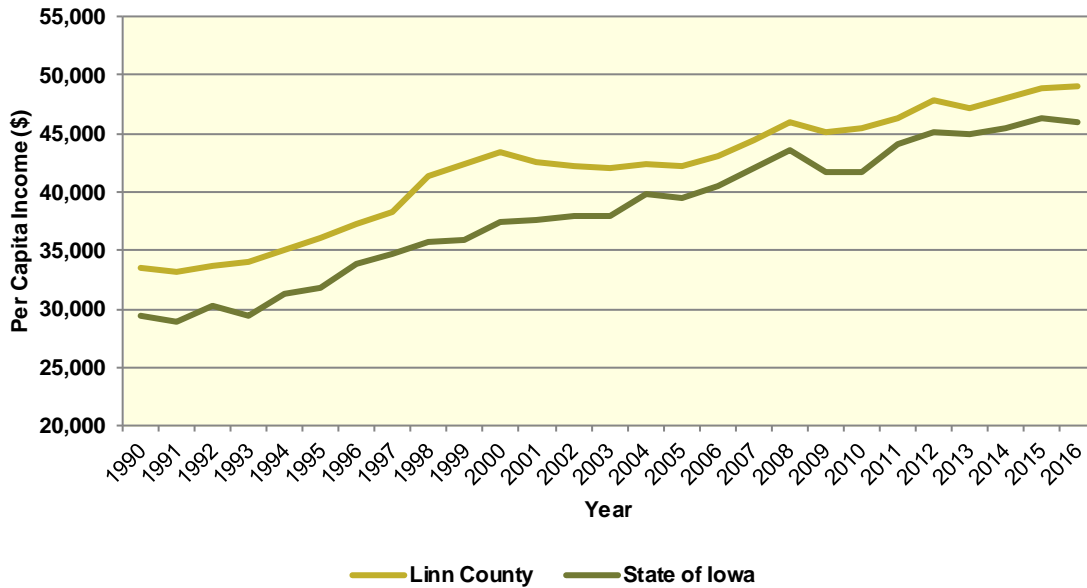


Diagram II.58.6, shows real per capita income for the Linn County from 1990 to 2016, which is calculated by dividing total personal income from all sources by population. Per capita income is a broader measure of wealth than real average earnings per job, which only captures the working population. Over this period, the real per capita income for Linn County was \$41,895, which was higher than the statewide average of \$38,254 over the same period.

Diagram II.58.6
Real Per Capita Income
 Linn County
 BEA Data 1990 - 2016



Quarterly Census of Employment and Wages

The BLS produces the Quarterly Census of Employment and Wages (QCEW), which reports monthly data on employment and quarterly data on wages and number of business establishments. QCEW employment data represent only filled jobs, whether full or part-time, temporary or permanent, by place of work the pay period. If data do not meet BLS or State agency disclosure standards they are displayed as (ND) and not disclosed. Data from this series are from the period of January 2006 through December 2016 and are presented in Table II.58.29, with the 2016 information considered preliminary (p). Between 2015 and 2016, total annual employment increased from 129,160 persons in 2015 to 129,558 in 2016, a change of 0.3 percent.

Table II.58.29
Total Monthly Employment
 Linn County
 BLS QCEW Data, 2001–2016(p)

Period	2006	2007	2008	2009	2010	2011	2012	2013	2014	2015	2016
Jan	116,787	120,068	123,038	123,518	120,917	121,870	124,418	124,199	124,734	127,081	127,714
Feb	117,376	120,641	123,364	123,965	120,851	122,418	124,130	124,527	124,962	127,004	127,594
Mar	118,838	121,142	124,168	123,786	121,684	123,182	125,299	125,069	125,776	127,858	128,500
Apr	120,058	122,755	125,435	124,593	123,606	125,068	126,392	125,792	127,727	128,730	129,517
May	120,846	124,224	126,808	124,668	124,704	125,985	127,543	127,112	128,795	130,229	129,972
Jun	122,650	126,155	127,362	125,406	125,876	127,525	129,013	128,791	130,407	131,915	131,680
Jul	119,488	122,621	125,267	122,603	123,905	124,213	125,028	126,069	127,457	128,543	129,079
Aug	119,907	122,926	125,298	121,979	123,858	124,136	125,758	126,428	127,624	128,205	129,717
Sep	121,086	123,850	126,485	123,190	124,943	125,840	126,716	127,799	128,782	129,505	130,745
Oct	121,997	124,765	127,530	123,968	126,041	125,962	127,203	127,446	129,084	129,829	130,236
Nov	122,703	125,911	128,001	124,213	126,799	126,897	127,399	127,975	129,736	130,539	130,054
Dec	122,806	125,735	127,319	123,777	126,586	127,024	127,419	128,109	130,043	130,484	129,883
Annual	120,379	123,399	125,840	123,806	124,148	125,010	126,360	126,610	127,927	129,160	129,558
% Change	.	2.5%	2%	-1.6%	0.3%	0.7%	1.1%	0.2%	1%	1%	0.3%

The QCEW also reports average weekly wages, which represents total compensation paid during the calendar quarter, regardless of when services were performed. The BLS QCEW data indicated average weekly wages were \$980 in 2015. In 2016, average weekly wages saw an increased of 1 percent over the prior year, rising to \$990, or by 10 dollars. These data are shown in Table II.58.30.

Table II.58.30						
Average Weekly Wages						
Linn County						
BLS QCEW Data, 2001–2016(p)						
Year	First Quarter	Second Quarter	Third Quarter	Fourth Quarter	Annual	% Change
2001	664	651	653	697	666	
2002	662	656	657	697	668	0.3%
2003	680	674	683	731	692	3.6%
2004	709	687	705	789	723	4.5%
2005	723	713	764	801	751	3.9%
2006	775	737	744	830	772	2.8%
2007	815	772	790	876	813	5.3%
2008	834	792	825	896	837	3%
2009	825	795	801	885	826	-1.3%
2010	813	828	828	925	849	2.8%
2011	848	838	887	941	879	3.5%
2012	905	847	875	947	893	1.6%
2013	924	881	885	959	912	2.1%
2014	958	894	915	1,019	946	3.7%
2015	1,000	922	928	1,069	980	3.6%
2016(p)	957	945	999	1,057	990	1%

Total business establishments reported by the QCEW are displayed in Table II.58.31. Between 2015 and 2016, the total number of business establishments in Linn County increased by 1 percent, from 6,533 to 6,655 establishments.

Table II.58.31						
Number of Business Establishments						
Linn County						
BLS QCEW Data, 2001–2016(p)						
Year	First Quarter	Second Quarter	Third Quarter	Fourth Quarter	Annual	% Change
2001	6,072	6,062	5,763	5,788	5,921	
2002	5,812	5,864	5,839	5,844	5,840	-1.4%
2003	5,879	5,890	5,919	5,939	5,907	1.1%
2004	6,007	6,016	6,049	6,029	6,025	2%
2005	6,069	6,087	6,111	6,129	6,099	1.2%
2006	6,090	6,165	6,199	6,206	6,165	1.1%
2007	6,216	6,233	6,276	6,243	6,242	1.2%
2008	6,245	6,289	6,281	6,279	6,274	0.5%
2009	6,260	6,266	6,265	6,227	6,255	-0.3%
2010	6,261	6,248	6,272	6,224	6,251	-0.1%
2011	6,195	6,203	6,197	6,270	6,216	-0.6%
2012	6,271	6,278	6,282	6,333	6,291	1.2%
2013	6,372	6,412	6,416	6,425	6,406	1.8%
2014	6,440	6,489	6,537	6,520	6,497	1.4%
2015	6,508	6,535	6,531	6,556	6,533	0.6%
2016	6,612	6,635	6,663	6,711	6,655	1.9%

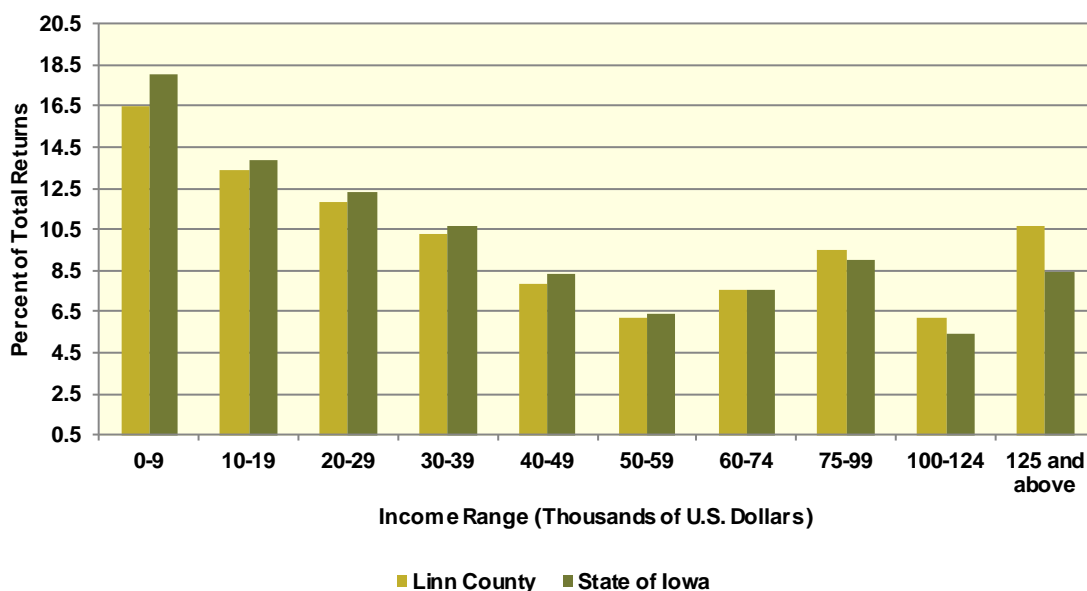
Iowa Department of Revenue

The Iowa Department of Revenue releases annual income tax statistics. Table II.58.32, shows the number of returns by adjusted gross income. For taxpayer confidentiality, if the number of returns was fewer than 5, the data was redacted. As a result the number of returns reported maybe slightly lower than the actual returns. Most redacted records occurred in the highest income brackets. The table below gives an accurate measure of the income distribution in Linn County.

As can be seen below, the total number of returns between 2010 and 2015 increased by 7 percent, with 11,033 returns reported in 2015, which was the most recent year available. Between 2010 and 2015, the adjusted gross income class that saw the largest change was \$0-9,999 with a change of 49.5 percent. This compared to the income class of \$60,000-74,999, which saw the lowest percentage change between 2010 and 2015 of -2.1 percent.

Table II.58.32 Number of Tax Returns by Adjusted Gross Income Linn County Iowa DOR 2002 - 2015											
Year	\$0 – 9,999	\$10,000 – 19,999	\$20,000 – 29,999	\$30,000 – 39,999	\$40,000 – 49,999	\$50,000 – 59,999	\$60,000 – 74,999	\$75,000 – 99,999	\$100,000 – 124,999	\$125,000 and above	Total
2002	16,347	12,573	12,068	9,522	7,557	6,405	7,782	7,548	2,951	3,375	86,128
2003	16,604	12,601	11,634	9,530	7,264	6,233	7,673	7,795	3,225	3,663	86,222
2004	16,361	12,550	11,538	9,356	7,376	6,249	7,649	8,262	3,625	4,412	87,378
2005	15,852	12,519	11,567	9,378	7,365	6,158	7,811	8,512	4,084	5,111	88,357
2006	15,704	12,526	11,424	9,828	7,470	6,387	7,963	9,010	4,610	5,755	90,677
2007	16,550	12,753	11,765	10,034	7,788	6,344	8,117	9,558	5,237	6,889	95,035
2008	16,398	12,582	11,815	10,019	7,741	6,620	8,079	9,664	5,556	7,043	95,517
2009	16,744	13,162	11,879	9,760	7,647	6,638	7,937	9,492	5,446	6,622	95,327
2010	16,690	13,541	11,610	10,077	7,816	6,566	7,912	9,547	5,633	7,381	96,773
2011	17,171	13,572	11,541	10,074	7,900	6,355	7,899	9,530	5,707	8,259	98,008
2012	16,718	13,536	11,741	9,967	7,819	6,427	7,956	9,671	5,949	8,810	98,594
2013	16,646	13,920	11,981	10,138	7,972	6,272	7,821	9,773	6,073	9,397	99,993
2014	16,628	13,925	12,287	10,486	8,096	6,236	7,785	9,857	6,313	10,290	101,903
2015	17,110	13,844	12,229	10,654	8,128	6,427	7,787	9,865	6,439	11,033	103,516
Change 10 - 15	2.5%	2.2%	5.3%	5.7%	4%	-2.1%	-1.6%	3.3%	14.3%	49.5%	7%

Diagram II.58.7
2015 Income Distribution
 Linn County
 2015 Iowa DOR Data



Poverty

Poverty is the condition of having insufficient resources or income. In its extreme form, poverty is a lack of basic human needs, such as adequate and healthy food, clothing, housing, water, and health services. According to the Census Bureau’s Small Area Income and Poverty Estimates Program, the number of individuals in poverty increase from 20,392 in 2010 to 21,613 in 2016, with the poverty rate reaching 10 percent in 2016. This compared to a state poverty rate of 11.7 percent and a national rate of 14 percent in 2016. Table II.58.33, at right, presents poverty data for the county.

Year	Persons in Poverty	Poverty Rate
2000	11,639	6.1%
2001	11,580	6%
2002	13,630	7%
2003	15,152	7.8%
2004	18,190	9.2%
2005	19,383	10%
2006	19,152	9.7%
2007	19,780	9.9%
2008	18,880	9.3%
2009	19,441	9.5%
2010	20,392	9.9%
2011	22,076	10.6%
2012	20,503	9.8%
2013	20,448	9.7%
2014	19,779	9.3%
2015	23,524	11%
2016	21,613	10%

The rate of poverty for Linn County is shown in Table II.58.34. In 2016, there were an estimated 19,912 persons living in poverty. This represented a 9.4 percent poverty rate, compared to 6.5 percent poverty in 2000. In 2016, some 8.8 percent of those in poverty were under age 6, and 9 percent were 65 or older.

Table II.58.34				
Poverty by Age				
Linn County				
2000 Census SF3 & 2016 Five-Year ACS Data				
Age	2000 Census		2016 Five-Year ACS	
	Persons in Poverty	% of Total	Persons in Poverty	% of Total
Under 6	1,528	12.6%	1,743	8.8%
6 to 17	2,327	19.2%	3,413	17.1%
18 to 64	6,875	56.6%	12,969	65.1%
65 or Older	1,420	11.7%	1,787	9%
Total	12,150	100.0%	19,912	100.0%
Poverty Rate	6.5%	.	9.4%	.

HOUSING

The Census Bureau estimates that the total number of housing units increased by 4.4 percent in Linn County between 2010 and 2016, from 92,251 to 96,271. This compared to an estimated 3.3 percent increase statewide, as shown in Table II.58.35.

Housing Production

The Census Bureau reports building permit authorizations and “per unit” valuation of building permits by county annually. Single-family construction usually represents most residential development in the county. Single-family building permit authorizations in Linn County decreased from 659 authorizations in 2015 to 516 in 2016.

The real value of single-family building permits increased from \$125,471 in 2015 to \$129,675 in 2016. This compares to an increase in permit value statewide, with values rising from \$234,346 in 2015 to \$235,750 in 2016. Additional details are given in Table II.58.36.

Table II.58.35				
Housing Units				
State of Iowa vs. Linn County				
2000 and 2016 Census Data and Intercensal Estimates				
Subject	Iowa	% Growth Since Census	Linn County	% Growth Since Census
2000 Census Base	1,232,625	.	80,566	.
2010 Census	1,336,417	8.4%	92,251	14.5%
July 2011 Estimate	1,341,974	0.4%	93,067	0.9%
July 2012 Estimate	1,346,403	0.7%	93,314	1.2%
July 2013 Estimate	1,353,274	1.3%	93,858	1.7%
July 2014 Estimate	1,362,458	1.9%	94,644	2.6%
July 2015 Estimate	1,370,778	2.6%	95,343	3.4%
July 2016 Estimate	1,380,162	3.3%	96,271	4.4%

Table II.58.36
Building Permits and Valuation
 Linn County
 Census Bureau Data, 1980–2016

Year	Authorized Construction in Permit Issuing Areas					Per Unit Valuation, (Real 2016\$)	
	Single-Family	Duplex Units	Tri- and Four-Plex	Multi-Family Units	Total Units	Single-Family Units	Multi-Family Units
1980	333	36	234	219	822	97,231	37,339
1981	197	4	88	118	407	94,536	35,658
1982	63	4	12	42	121	100,317	39,602
1983	142	6	12	0	160	87,630	0
1984	182	6	31	33	252	100,149	53,575
1985	218	6	40	8	272	104,449	43,339
1986	330	28	64	206	628	101,679	31,380
1987	480	4	38	259	781	112,599	31,143
1988	508	14	62	112	696	112,240	40,258
1989	534	10	148	389	1,081	125,955	54,160
1990	499	14	79	90	682	126,735	33,361
1991	544	12	94	357	1,007	137,062	37,498
1992	740	28	108	341	1,217	134,230	38,774
1993	808	12	91	310	1,221	138,478	45,667
1994	765	36	183	178	1,162	134,595	45,678
1995	673	34	151	406	1,264	128,451	67,030
1996	725	46	95	226	1,092	142,398	49,411
1997	700	40	62	257	1,059	136,152	52,308
1998	839	80	107	212	1,238	143,968	67,924
1999	908	112	150	519	1,689	143,306	50,323
2000	850	76	117	636	1,679	155,393	46,323
2001	860	56	127	518	1,561	159,371	40,188
2002	931	66	68	596	1,661	146,527	38,893
2003	1,013	54	111	531	1,709	144,584	48,437
2004	1,045	74	149	637	1,905	145,182	43,346
2005	964	54	280	300	1,598	147,724	80,472
2006	820	44	165	56	1,085	141,759	60,796
2007	770	60	131	156	1,117	140,111	55,031
2008	698	36	155	42	931	127,122	51,211
2009	661	72	172	251	1,156	118,320	82,997
2010	658	76	74	10	818	110,668	66,706
2011	545	54	76	24	699	121,284	35,999
2012	584	46	103	20	753	114,773	35,347
2013	583	52	77	189	901	127,660	101,732
2014	615	60	109	54	838	125,581	105,719
2015	659	104	57	205	1,025	125,471	51,585
2016	516	130	67	35	748	129,675	52,962



Diagram II.58.8 Single Family Permits

Linn County
Census Bureau Data, 1980–2016

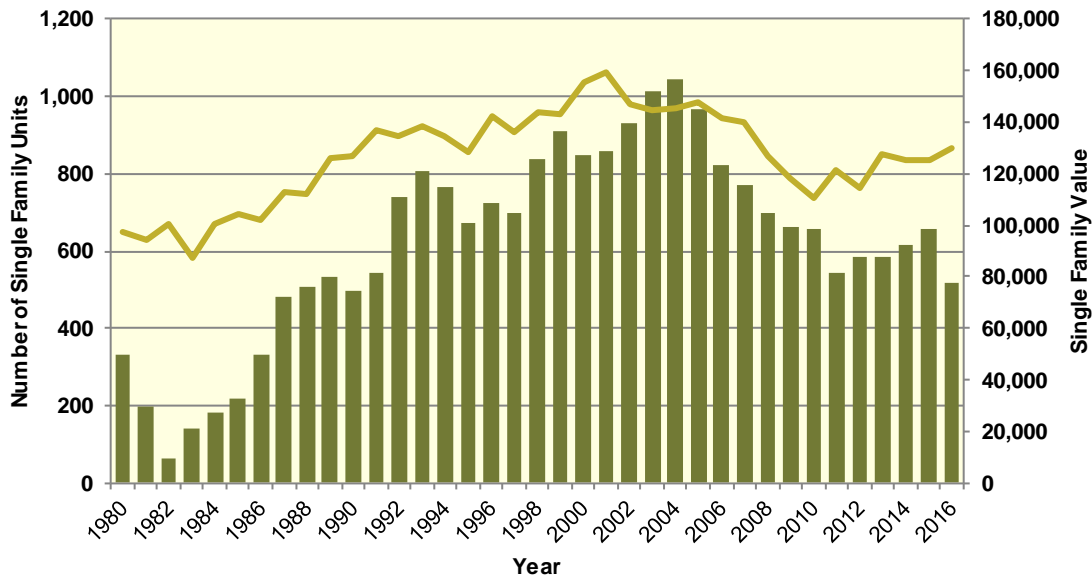
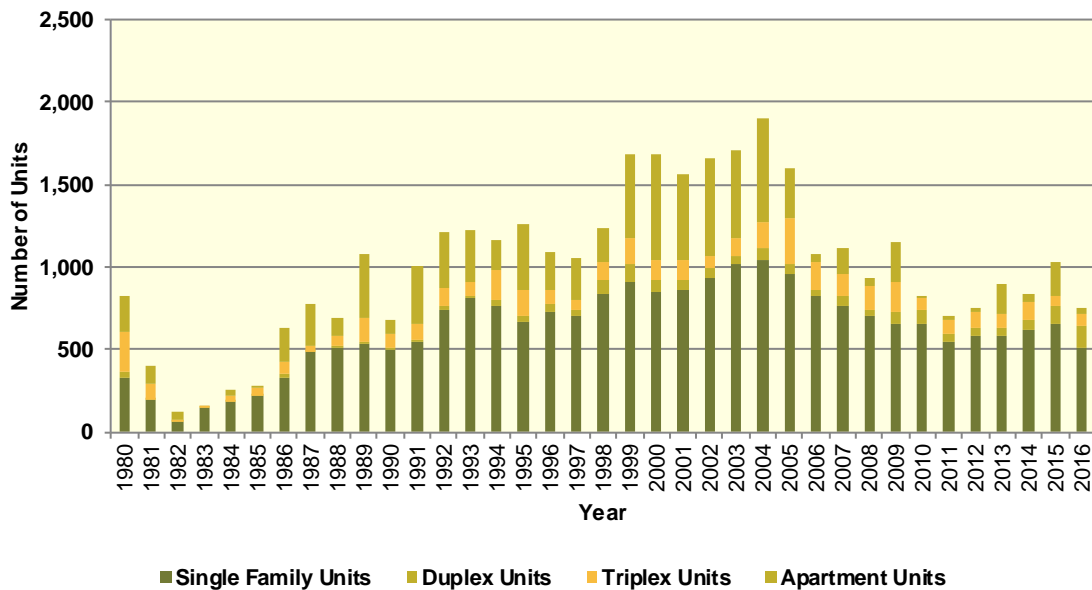


Diagram II.58.9 Total Permits by Unit Type

Linn County
Census Bureau Data, 1980–2016



Housing Characteristics

Housing types by unit are shown in Table II.58.37. In 2016, there were 94,738 housing units, up from 80,551 in 2000. Single-family units accounted for 71.7 percent of units in 2016, compared to 71.4 in 2000. Apartment units accounted for 17.5 percent in 2016, compared to 15.3 percent in 2000.

Table II.58.37 Housing Units by Type Linn County 2000 Census SF3 & 2016 Five-Year ACS Data				
Unit Type	2000 Census		2016 Five-Year ACS	
	Units	% of Total	Units	% of Total
Single-Family	57,482	71.4%	67,922	71.7%
Duplex	2,125	2.6%	1,557	1.6%
Tri- or Four-Plex	3,848	4.8%	4,349	4.6%
Apartment	12,319	15.3%	16,597	17.5%
Mobile Home	4,766	5.9%	4,289	4.5%
Boat, RV, Van, Etc.	11	0%	24	0%
Total	80,551	100.0%	94,738	100.0%

Some 93.4 percent of housing was occupied in 2010, compared to 95.3 percent in 2000. Owner-occupied housing changed 12.1 percent between 2000 and 2010, ending with owner-occupied units representing 72.7 percent of unit. Vacant units changed by 61.1 percent, resulting in 6,117 vacant units in 2010.

Table II.58.38 Housing Units by Tenure Linn County 2000 & 2010 Census SF1 Data					
Tenure	2000 Census		2010 Census		% Change 00-10
	Units	% of Total	Units	% of Total	
Occupied Housing Units	76,753	95.3%	86,134	93.4%	12.2%
Owner-Occupied	55,826	72.7%	62,596	72.7%	12.1%
Renter-Occupied	20,927	27.3%	23,538	27.3%	12.5%
Vacant Housing Units	3,798	4.7%	6,117	6.6%	61.1%
Total Housing Units	80,551	100.0%	92,251	100.0%	14.5%

Table II.58.39 shows housing units by tenure from 2010 to 2016. By 2016, there were 94,738 housing units. An estimated 73.5 percent were owner-occupied, and 7.1 percent were vacant.

Table II.58.39 Housing Units by Tenure Linn County 2010 Census & 2016 Five-Year ACS Data				
Tenure	2010 Census		2016 Five-Year ACS	
	Units	% of Total	Units	% of Total
Occupied Housing Units	86,134	93.4%	88,006	92.9%
Owner-Occupied	62,596	72.7%	64,658	73.5%
Renter-Occupied	23,538	27.3%	23,348	26.5%
Vacant Housing Units	6,117	6.6%	6,732	7.1%
Total Housing Units	92,251	100.0%	94,738	100.0%

Households by household size are shown in Table II.58.40. There were a total of 86,134 households in 2010, up from 76,753 in 2000. One person households changed by 19.4 percent between 2000 and 2010, while two person households changed by 11.8 percent. Three and four person households changed by 8 and 3.9 respectively, representing 14.7 percent and 12.7 percent of the population in 2010.

Table II.58.40					
Households by Household Size					
Linn County					
2000 & 2010 Census SF1 Data					
Size	2000 Census		2010 Census		% Change 00–10
	Households	% of Total	Households	% of Total	
One Person	21,092	27.5%	25,188	29.2%	19.4%
Two Persons	27,135	35.4%	30,348	35.2%	11.8%
Three Persons	11,760	15.3%	12,700	14.7%	8%
Four Persons	10,537	13.7%	10,944	12.7%	3.9%
Five Persons	4,391	5.7%	4,625	5.4%	5.3%
Six Persons	1,283	1.7%	1,592	1.8%	24.1%
Seven Persons or More	555	0.7%	737	0.9%	32.8%
Total	76,753	100.0%	86,134	100.0%	12.2%

Households by income is shown in Table II.58.41. Households earning more than \$100,000 per year represented 24.7 percent of households in 2016, compared to 10.2 percent in 2000. Households earning between \$50,000 and \$74,999 represented 19.1 percent of households in 2010, compared to 23.6 percent in 2000. Meanwhile, households earning less than \$15,000 accounted for 8.8 percent of households in 2016, compared to 10.9 percent in 2000.

Table II.58.41				
Households by Income				
Linn County				
2000 Census SF3 & 2016 Five-Year ACS Data				
Income	2000 Census		2016 Five-Year ACS	
	Households	% of Total	Households	% of Total
Less than \$15,000	8,346	10.9%	7,713	8.8%
\$15,000 to \$19,999	4,384	5.7%	3,888	4.4%
\$20,000 to \$24,999	4,871	6.3%	4,179	4.7%
\$25,000 to \$34,999	9,911	12.9%	8,742	9.9%
\$35,000 to \$49,999	14,101	18.4%	11,455	13%
\$50,000 to \$74,999	18,131	23.6%	16,826	19.1%
\$75,000 to \$99,999	9,242	12%	13,444	15.3%
\$100,000 or More	7,820	10.2%	21,759	24.7%
Total	76,806	100.0%	88,006	100.0%

Table II.58.42, shows households by year home built. Housing units built between 2000 and 2009, and 2010 or later, account for 15.5 percent and 3.7 percent of households, respectively. Households built in the 1970's, 1980's, and 1990's account for 14.4 percent, 7.5 percent, and 16, respectively. Housing units built prior to 1939 represented 14.5 percent of households in 2016.

Table II.58.42				
Households by Year Home Built				
Linn County				
2000 Census SF3 & 2016 Five-Year ACS Data				
Year Built	2000 Census		2016 Five-Year ACS	
	Households	% of Total	Households	% of Total
1939 or Earlier	15,621	20.4%	12,753	14.5%
1940 to 1949	4,185	5.5%	3,336	3.8%
1950 to 1959	10,702	13.9%	9,874	11.2%
1960 to 1969	12,185	15.9%	11,700	13.3%
1970 to 1979	13,773	17.9%	12,663	14.4%
1980 to 1989	6,416	8.4%	6,640	7.5%
1990 to 1999	13,871	18.1%	14,117	16%
2000 to 2009	.	.	13,628	15.5%
2010 or Later	.	.	3,295	3.7%
Total	76,753	100.0%	88,006	100.0%

The distribution of unit types by race are shown in Table II.58.43. An estimated 76.3 percent of white households occupy single family homes, while 33.7 percent of black households do. Some 13.9 percent of white households occupied apartments, while 52.4 percent of black households do. An estimated 59.5 percent of Asian, and 63 percent of American Indian households occupy single family homes.

Table II.58.43							
Distribution of Units in Structure by Race							
Linn County							
2016 Five-Year ACS Data							
Unit Type	White	Black	American Indian	Asian	Native Hawaiian/Pacific Islanders	Other	Two or More Races
Single-Family	76.3%	33.7%	63%	59.5%	100%	35.1%	53.5%
Duplex	1.4%	2.5%	0%	0%	0%	0.5%	8.4%
Tri- or Four-Plex	4.1%	10.3%	12%	4.2%	0%	12%	6.5%
Apartment	13.9%	52.4%	25%	34.9%	0%	30.2%	27.9%
Mobile Home	4.3%	1.1%	0%	0%	0%	22.2%	3.7%
Boat, RV, Van, Etc.	0%	0%	0%	1.4%	0%	0%	0%
Total	100.0%	100.0%	100.0%	100.0%	100.0%	100.0%	100.0%

The disposition of vacant housing units in 2000 and 2010 are shown in Table II.58.44. An estimated 37.4 percent of vacant units were for rent in 2010, a 83.1 percent change since 2000. In addition, some 19.6 percent of vacant units were for sale, a change of 36 percent between 2000 and 2010. "Other" vacant units represented 28.3 percent of vacant units in 2010. This is a change of 93.8 percent since 2000. "Other" vacant units are not for sale or rent, or otherwise available to the marketplace. These units may be problematic if concentrated in certain areas, and may create a "blighting" effect.



Table II.58.44					
Disposition of Vacant Housing Units					
Linn County					
2000 & 2010 Census SF1 Data					
Disposition	2000 Census		2010 Census		% Change 00–10
	Units	% of Total	Units	% of Total	
For Rent	1,248	32.9%	2,285	37.4%	83.1%
For Sale	881	23.2%	1,198	19.6%	36%
Rented or Sold, Not Occupied	284	7.5%	369	6%	29.9%
For Seasonal, Recreational, or Occasional Use	487	12.8%	531	8.7%	9%
For Migrant Workers	4	0.1%	1	0%	-75%
Other Vacant	894	23.5%	1,733	28.3%	93.8%
Total	3,798	100.0%	6,117	100.0%	61.1%

The disposition of vacant units between 2010 and 2016 are shown in Table II.58.45. By 2016, for rent units accounted for 31.4 percent of vacant units, while for sale units accounted for 17.1 percent. “Other” vacant units accounted for 37.6 percent of vacant units, representing a total of 2,533 “other” vacant units.

Table II.58.45				
Disposition of Vacant Housing Units				
Linn County				
2010 Census & 2016 Five-Year ACS Data				
Disposition	2010 Census		2016 Five-Year ACS	
	Units	% of Total	Units	% of Total
For Rent	2,285	37.4%	2,115	31.4%
For Sale	1,198	19.6%	1,152	17.1%
Rented Not Occupied	110	1.8%	422	6.3%
Sold Not Occupied	259	4.2%	223	3.3%
For Seasonal, Recreational, or Occasional Use	531	8.7%	287	4.3%
For Migrant Workers	1	0%	0	0%
Other Vacant	1,733	28.3%	2,533	37.6%
Total	6,117	100.0%	6,732	100.0%

Housing Problems

Households are classified as having housing problems if they face overcrowding, incomplete plumbing or kitchen facilities, or cost burdens. Overcrowding is defined as having from 1.1 to 1.5 people per room per residence, with severe overcrowding defined as having more than 1.5 people per room. Households with overcrowding are shown in Table II.58.46. In 2016, an estimated 0.8 percent of households were overcrowded, and an additional 0.3 percent were severely overcrowded.

Table II.58.46 Overcrowding and Severe Overcrowding Linn County 2000 Census SF3 & 2016 Five-Year ACS Data							
Data Source	No Overcrowding		Overcrowding		Severe Overcrowding		Total
	Households	% of Total	Households	% of Total	Households	% of Total	
Owner							
2000 Census	55,242	99%	437	0.8%	142	0.3%	55,821
2016 Five-Year ACS	64,253	99.4%	305	0.5%	100	0.2%	64,658
Renter							
2000 Census	20,142	96.2%	479	2.3%	311	1.5%	20,932
2016 Five-Year ACS	22,720	97.3%	438	1.9%	190	0.8%	88,006
Total							
2000 Census	75,384	98.2%	916	1.2%	453	0.6%	76,753
2016 Five-Year ACS	86,973	98.8%	743	0.8%	290	0.3%	88,006

Incomplete plumbing and kitchen facilities are another indicator of potential housing problems. According to the Census Bureau, a housing unit is classified as lacking complete plumbing facilities when any of the following are not present: piped hot and cold water, a flush toilet, and a bathtub or shower. Likewise, a unit is categorized as deficient when any of the following are missing from the kitchen: a sink with piped hot and cold water, a range or cook top and oven, and a refrigerator.

There were a total of 237 households with incomplete plumbing facilities in 2016, representing 0.3 percent of households in Linn County. This is compared to 0.3 percent of households lacking complete plumbing facilities in 2000.

Table II.58.47 Households with Incomplete Plumbing Facilities Linn County 2000 Census SF3 & 2016 Five-Year ACS Data		
Households	2000 Census	2016 Five-Year ACS
With Complete Plumbing Facilities	76,526	87,769
Lacking Complete Plumbing Facilities	227	237
Total Households	76,753	88,006
Percent Lacking	0.3%	0.3%

There were 700 households lacking complete kitchen facilities in 2016, compared to 217 households in 2000. This was a change from 0.3 percent of households in 2000 to 0.8 percent in 2016.

Table II.58.48 Households with Incomplete Kitchen Facilities Linn County 2000 Census SF3 & 2016 Five-Year ACS Data		
Households	2000 Census	2016 Five-Year ACS
With Complete Kitchen Facilities	76,536	87,306
Lacking Complete Kitchen Facilities	217	700
Total Households	76,753	88,006
Percent Lacking	0.3%	0.8%

Cost burden is defined as gross housing costs that range from 30.0 to 50.0 percent of gross household income; severe cost burden is defined as gross housing costs that exceed 50.0 percent of gross household income. For homeowners, gross housing costs include property taxes, insurance, energy payments, water and sewer service, and refuse collection. If the homeowner has a

mortgage, the determination also includes principal and interest payments on the mortgage loan. For renters, this figure represents monthly rent and selected electricity and natural gas energy charges.

In Linn County, 14.1 of households had a cost burden and 8.9 percent had a severe cost burden. Some 22 percent of renters were cost burdened, and 17.9 percent were severely cost burdened. Owner-occupied households without a mortgage had a cost burden rate of 7 percent and a severe cost burden rate of 4.7 percent. Owner occupied households with a mortgage had a cost burden rate of 13.2 percent, and severe cost burden at 6.2 percent.

Table II.58.49
Cost Burden and Severe Cost Burden by Tenure
 Linn County
 2000 Census & 2016 Five-Year ACS Data

Data Source	Less Than 30%		31%-50%		Above 50%		Not Computed		Total
	Households	% of Total	Households	% of Total	Households	% of Total	Households	% of Total	
Owner With a Mortgage									
2000 Census	27,464	83.1%	4,141	12.5%	1,385	4.2%	57	0.2%	33,047
2016 Five-Year ACS	35,182	80.3%	5,784	13.2%	2,693	6.2%	128	0.3%	43,787
Owner Without a Mortgage									
2000 Census	12,697	94.5%	493	3.7%	170	1.3%	80	0.6%	13,440
2016 Five-Year ACS	18,257	87.5%	1,457	7%	983	4.7%	174	0.8%	20,871
Renter									
2000 Census	13,408	65.3%	3,687	18%	2,566	12.5%	869	4.2%	20,530
2016 Five-Year ACS	12,906	55.3%	5,135	22%	4,169	17.9%	1,138	4.9%	23,348
Total									
2000 Census	53,569	79.9%	8,321	12.4%	4,121	6.1%	1,006	1.5%	67,017
2016 Five-Year ACS	66,345	75.4%	12,376	14.1%	7,845	8.9%	1,440	1.6%	88,006

Housing Problems by Income

Table II.58.50, at right, shows the HUD calculated Median Family Income (MFI) for a family of four for Linn County. As can be seen in 2017 the MFI was \$79,900, which compared to \$69,900 for the State of Iowa.

Table II.58.51, shows Comprehensive Housing Affordability Strategy (CHAS) data for housing problems by tenure and income. As can be seen there are a total of 6,890 owner-occupied and 4,100 renter-occupied households with a cost burden of greater than 30 percent and less than 50 percent. An additional 3,420 owner-occupied 4,075 renter-occupied households had a cost burden greater than 50 percent of income. Overall there are 66,165 households without a housing problem.

Table II.58.50
Median Family Income
 Linn County
 2000–2017 HUD MFI

Year	MFI	State of Iowa MFI
2000	59,400	49,100
2001	65,300	52,500
2002	67,100	53,700
2003	65,700	54,900
2004	65,700	55,800
2005	67,450	57,650
2006	65,200	57,800
2007	63,800	58,100
2008	62,900	58,500
2009	67,600	62,000
2010	68,400	62,400
2011	70,100	64,000
2012	71,000	64,800
2013	71,700	64,700
2014	74,500	65,300
2015	78,100	67,500
2016	76,200	68,400
2017	79,900	69,900

Table II.58.51
Housing Problems by Income and Tenure
 Linn County
 2010–2014 HUD CHAS Data

Housing Problem	Less Than 30% MFI	30% - 50% MFI	50% - 80% MFI	80% - 100% MFI	Greater than 100% MFI	Total
Owner-Occupied						
Lacking complete plumbing or kitchen facilities	60	10	25	40	50	185
Severely Overcrowded with > 1.51 people per room (and complete kitchen and plumbing)	0	0	25	0	60	85
Overcrowded - With 1.01-1.5 people per room (and none of the above problems)	30	90	35	95	70	320
Housing cost burden greater than 50% of income (and none of the above problems)	1,845	1,185	245	55	90	3,420
Housing cost burden greater than 30% but less than 50% of income (and none of the above problems)	785	1,545	2,785	870	905	6,890
Zero/negative income (and none of the above problems)	175	0	0	0	0	175
has none of the 4 housing problems	490	3,040	7,730	7,010	34,610	52,880
Total	3,385	5,870	10,845	8,070	35,785	63,955
Renter-Occupied						
Lacking complete plumbing or kitchen facilities	155	290	35	30	25	535
Severely Overcrowded with > 1.51 people per room (and complete kitchen and plumbing)	120	15	20	20	10	185
Overcrowded - With 1.01-1.5 people per room (and none of the above problems)	140	115	85	50	20	410
Housing cost burden greater than 50% of income (and none of the above problems)	3,625	320	110	10	10	4,075
Housing cost burden greater than 30% but less than 50% of income (and none of the above problems)	1,460	1,870	630	85	55	4,100
Zero/negative income (and none of the above problems)	450	0	0	0	0	450
has none of the 4 housing problems	935	2,235	3,860	2,470	3,785	13,285
Total	6,885	4,845	4,740	2,665	3,905	23,040
Total						
Lacking complete plumbing or kitchen facilities	215	300	60	70	75	720
Severely Overcrowded with > 1.51 people per room (and complete kitchen and plumbing)	120	15	45	20	70	270
Overcrowded - With 1.01-1.5 people per room (and none of the above problems)	170	205	120	145	90	730
Housing cost burden greater than 50% of income (and none of the above problems)	5,470	1,505	355	65	100	7,495
Housing cost burden greater than 30% but less than 50% of income (and none of the above problems)	2,245	3,415	3,415	955	960	10,990
Zero/negative income (and none of the above problems)	625	0	0	0	0	625
has none of the 4 housing problems	1,425	5,275	11,590	9,480	38,395	66,165
Total	10,270	10,715	15,585	10,735	39,690	86,995

Home Mortgage Loans

The FFEIC The Home Mortgage Disclosure Act (HMDA) was enacted by Congress in 1975. Data collected under the HMDA provide a comprehensive portrait of home loan activity, including information pertaining to home purchase loans, home improvement loans, and refinancing. For the analysis below only owner-occupied originated loans for single family units were considered. As can be seen in Table II.58.52 on the following page, of the 8,268 loans in 2016, 4,741 loans were for Home Purchases, 411 were for Home Improvement and 3,116 were for refinancing.

Table II.58.52				
Owner-Occupied Single Family Home Loans by Loan Type				
Linn County				
2008 – 2016 HMDA Data				
Year	Home Purchase	Home Improvement	Refinancing	Total
2008	3,346	538	2,731	6,615
2009	3,817	488	6,239	10,544
2010	3,365	490	6,691	10,546
2011	2,958	451	5,275	8,684
2012	2,590	339	6,360	9,289
2013	3,740	380	4,735	8,855
2014	4,014	431	1,923	6,368
2015	4,357	429	2,548	7,334
2016	4,741	411	3,116	8,268

Table II.58.53, shows the average loan value by loan type. In 2008, average home purchase loans was \$125,625 in 2012 and \$130,382 in 2016. Overall, average loans were \$124,611 in 2008 and \$134,554 in 2016.

Table II.58.53				
Owner-Occupied Single Family Home Loans by Average Loan Amount				
Linn County				
2008 – 2016 HMDA Data				
Year	Home Purchase	Home Improvement	Refinancing	Total
2008	\$131,780	\$34,582	\$133,564	\$124,611
2009	\$130,043	\$40,064	\$148,730	\$136,936
2010	\$128,758	\$46,284	\$143,977	\$134,582
2011	\$120,360	\$45,958	\$135,977	\$125,982
2012	\$125,625	\$64,451	\$141,154	\$134,025
2013	\$120,483	\$55,729	\$129,353	\$122,447
2014	\$117,441	\$38,937	\$125,233	\$114,481
2015	\$125,581	\$55,413	\$136,656	\$125,324
2016	\$130,382	\$61,689	\$150,512	\$134,554

Table II.58.54, shows the total volume of owner-occupied single family loans. In 2008, average home purchase loans was \$325,370,000 in 2012 and \$618,140,000 in 2016. Overall, average loans were \$824,302,000 in 2008 and \$1,112,490,000 in 2016.

Table II.58.54
Total Volume of Owner-Occupied Single Family Loans
Linn County
2008 – 2016 HMDA Data

Year	Home Purchase	Home Improvement	Refinancing	Total
2008	\$440,935,000	\$18,605,000	\$364,762,000	\$824,302,000
2009	\$496,375,000	\$19,551,000	\$927,926,000	\$1,443,852,000
2010	\$433,272,000	\$22,679,000	\$963,353,000	\$1,419,304,000
2011	\$356,025,000	\$20,727,000	\$717,279,000	\$1,094,031,000
2012	\$325,370,000	\$21,849,000	\$897,742,000	\$1,244,961,000
2013	\$450,605,000	\$21,177,000	\$612,487,000	\$1,084,269,000
2014	\$471,407,000	\$16,782,000	\$240,823,000	\$729,012,000
2015	\$547,157,000	\$23,772,000	\$348,200,000	\$919,129,000
2016	\$618,140,000	\$25,354,000	\$468,996,000	\$1,112,490,000

Survey of Rental Properties

From September through December of 2017, a telephone survey was conducted with landlords and rental property managers throughout Iowa. Table II.58.55 presents some basic statistics about the completed surveys.

Table II.58.55
Survey of Rental Properties
Linn County
2017 Survey of Rental Properties

Year	Completed Surveys	Total Units	Vacancy Rate	Absorption Rate
2017	114	6,086	3.8	37.3

Table II.58.56, shows the amount of total and vacant units with their associated vacancy rates. At the time of the survey, there were an estimated 430 single family units in Linn County, with 13 of them available. This translates into a vacancy rate of 3 percent in Linn County, which compares to a single family vacancy rate of 6.7 percent for the State of Iowa. There were 5,469 apartment units reported in the survey, with 193 of them available, which resulted in a vacancy rate of 3.5 percent. This compares to a statewide vacancy rate of 6.7 percent for apartment units across the state.

Table II.58.56
Rental Vacancy Survey by Type
Linn County
2017 Survey of Rental Properties

Unit Type	Total Units	Vacant Units	Vacancy Rate
Single Family	430	13	3%
Apartments	5,469	193	3.5%
Mobile Homes	128	9	7%
“Other” Units	3	0	0%
Don’t Know	56	19	33.9%
Total	6,086	234	3.8%

Table II.58.57, reports units by bedroom size. As can be seen there were 2,335 two bedroom apartment units and 499 three bedroom units. Overall, the 2,379 two bedroom units accounted for 39.1 percent of all units, and the 664 three bedroom units accounted for 10.9 percent. Several respondents choose not to provide bedroom sizes, which accounted for the 1,081 units listed as “Don’t Know”. Additional details for additional unit types are reported found below.

Table II.58.57						
Rental Units by Bedroom Size						
Linn County						
2017 Survey of Rental Properties						
Number of Bedrooms	Single Family Units	Apartment Units	Mobile Homes	“Other” Units	Don’t Know	Total
Efficiency	0	299	0	0	.	299
One	116	1,454	0	0	.	1,570
Two	44	2,335	0	0	.	2,379
Three	165	499	0	0	.	664
Four	52	41	0	0	.	93
Don’t Know	53	841	128	3	56	1,081
Total	430	5,469	128	3	56	6,086

Table II.58.58, at right, displays the vacancy rate of single family units by the number of bedrooms. Three-bedroom units were the most common type of reported single family unit, which had a vacancy rate of 5.5 percent.

Table II.58.58			
Single Family Units by Bedroom Size			
Linn County			
2017 Survey of Rental Properties			
Number of Bedrooms	Units	Available Units	Vacancy Rates
Studio	0	0	0%
One	116	0	0%
Two	44	1	2.3%
Three	165	9	5.5%
Four	52	3	5.8%
Don’t know	53	0	0%
Total	430	13	3%

Table II.58.59 displays the vacancy rate of apartment units by the number of bedrooms. The most common apartment units were Two-bedroom units, which had a vacancy rate of 3.7 percent.

Table II.58.59			
Apartment Units by Bedroom Size			
Linn County			
2017 Survey of Rental Properties			
Number of Bedrooms	Units	Available Units	Vacancy Rates
Efficiency	299	5	1.7%
One	1,454	23	1.6%
Two	2,335	87	3.7%
Three	499	13	2.6%
Four	41	6	14.6%
Don’t know	841	59	7.6%
Total	5,469	193	3.5%

Average market-rate rents by unit type are shown in Table II.58.60. Not all respondents were able to disclose the rental amounts for their units, so there may be some statistical aberrations in the computed rental rates, but generally those units with more bedrooms had higher rents.

Table II.58.60					
Average Market Rate Rents by Bedroom Size					
Linn County					
2017 Survey of Rental Properties					
Number of Bedrooms	Single Family Units	Apartment Units	Mobile Homes	“Other” Units	Total
Efficiency	\$0	\$507.8	\$0	\$0	\$507.8
One	\$555	\$574.6	\$0	\$0	\$573.7
Two	\$796.1	\$687.8	\$0	\$0	\$700.6
Three	\$1000.4	\$822.1	\$0	\$0	\$917.8
Four	\$1201.8	\$902.2	\$0	\$0	\$1122.9
Total	\$1037.6	\$666.2	\$0	\$0	\$773

Table II.58.61, shows the average rental rates for assisted units by bedroom size and unit type. Since assistance is often based on income of the resident or other case by case determinations average assisted rents can vary across bedroom size.

Table II.58.61					
Average Assisted Rate Rents by Bedroom Size					
Linn County					
2017 Survey of Rental Properties					
Number of Bedrooms	Single Family Units	Apartment Units	Mobile Homes	“Other” Units	Total
Efficiency	\$0	\$425	\$0	\$0	\$425
One	\$0	\$578	\$0	\$0	\$578
Two	\$0	\$662.5	\$0	\$0	\$662.5
Three	\$0	\$922.5	\$0	\$0	\$922.5
Four	\$0	\$1066	\$0	\$0	\$1066
Total	\$0	\$690.1	\$0	\$0	\$690.1

Table II.58.62, shows vacancy rates for single family units by average rental rates for Linn County. The most common rent for single family units was between 500 and 750 dollars and the units in this price range had a vacancy rate of 1.2 percent.

Table II.58.62			
Single Family Market Rate Rents by Vacancy Status			
Linn County			
2017 Survey of Rental Properties			
Average Rents	Single Family Units	Available Single Family Units	Vacancy Rate
Less Than \$500	0	0	0%
\$500 to \$750	243	3	1.2%
\$750 to \$1,000	111	9	8.1%
\$1,000 to \$1,250	40	1	2.5%
\$1,250 to \$1,500	33	0	0%
Above \$1,500	0	0	0%
Missing	3	0	0%
Total	430	13	3%

The average rent and availability of apartment units is displayed in Table II.58.63. The most common rent for apartment rents was between 500 and 750 dollars and the units in this price range had a vacancy rate of 3.6 percent.

Table II.58.63 Apartment Market Rate Rents by Vacancy Status Linn County 2017 Survey of Rental Properties			
Average Rents	Apartment Units	Available Apartment Units	Vacancy Rate
Less Than \$500	704	10	1.4%
\$500 to \$750	2,952	107	3.6%
\$750 to \$1,000	1,298	60	4.6%
\$1,000 to \$1,250	216	4	1.9%
\$1,250 to \$1,500	0	0	0%
Above \$1,500	0	0	0%
Missing	299	12	4%
Total	5,469	193	3.5%

Respondents were asked if utilities are included in the rent and as shown in Table II.58.64 below 61 respondents, or 59.8 percent, included some sort of utility in the rent.

Table II.58.64 Are there any utilities included with the rent? Linn County 2017 Survey of Rental Properties	
Period	Respondent
Yes	61
No	41
% Offering Utilities	59.8%

The type of utility included in the rent is shown in Table II.58.65. There were 10 respondents who included electricity, 19 respondents who included natural gas, 59 respondents who included water and sewer and 54 respondents included trash collection in the rent.

Table II.58.65 Which utilities are included with the rent? Linn County 2017 Survey of Rental Properties	
Type of Utility Provided	Respondent
Electricity	10
Natural Gas	19
Water/Sewer	59
Trash Collection	54

Accessible Rental Properties

The survey also asked respondents if any of their units were accessible to persons with disabilities. As can be seen in, Table II.58.66, there were 41 single family units which property managers considered accessible, with an additional 1,114 accessible apartment units. In addition to the units shown below there were 10 mobile homes and 0 “other” units, which property managers deemed accessible to persons with a disability. Respondents also indicated there were a total of 196 persons with disabilities currently residing in accessible units.

Table II.58.66						
Accessible Units by Bedroom Size						
Linn County						
2017 Survey of Rental Properties						
Number of Bedrooms	Single Family Units	Apartment Units	Mobile Homes	“Other” Units	Don’t Know	Total
Efficiency	0	10	0	0		10
One	1	269	0	0		270
Two	5	536	0	0		541
Three	9	117	0	0		126
Four	24	10	0	0		34
Don’t Know	2	172	10	0	6	190
Total	41	1,114	10	0	6	1,171

Table II.58.67, shows the breakdown of accessible and not accessible single family units by bedroom size. As can be seen 11.4 percent or 5 two bedroom single family units are accessible, with 5.5 percent of three bedroom units were considered accessible. Overall, 9.5 percent of all single family units were considered accessible by survey respondents.

Table II.58.67				
Single Family Units by Accessibility and Bedroom Size				
Linn County				
2017 Survey of Rental Properties				
Number of Bedrooms	Not Accessible	Accessible Units	Single Family Units	Percentage Accessible
Studio	0	0	0	%0
One	115	1	116	0.9%
Two	39	5	44	11.4%
Three	156	9	165	5.5%
Four	28	24	52	46.2%
Don’t know	51	2	53	3.8%
Total	389	41	430	9.5%

Table II.58.68, shows the breakdown of accessible and not accessible apartment units by bedroom size. As can be seen 23 percent or 536 two bedroom apartment units are accessible, with 23.4 percent of three bedroom units were considered accessible. Overall, 20.4 percent of all apartment units were considered accessible by survey respondents.

Table II.58.68 Apartment Units by Accessibility and Bedroom Size Linn County 2017 Survey of Rental Properties				
Number of Bedrooms	Not Accessible	Accessible Units	Apartment Units	Percentage Accessible
Studio	289	10	299	3.3%
One	1,185	269	1,454	18.5%
Two	1,799	536	2,335	23%
Three	382	117	499	23.4%
Four	31	10	41	24.4%
Don't know	669	172	841	20.5%
Total	4,355	1,114	5,469	20.4%

Perceived Need for Rental Units

Table II.58.69, at right, shows the number of survey respondents who keep a waiting list. As can be seen 53 respondents said they keep a waitlist, with an estimated 1,368 number of persons on the wait list.

Table II.58.69 Do you keep a waiting list? Linn County 2017 Survey of Rental Properties	
Period	Respondent
Yes	53
No	52
Waitlist Size	1,368

Respondents were also asked how they would rate the need for renovating existing units. As shown in Table II.58.70, 17 respondents said there was no need for renovating single family units, with 2 respondents saying there was extreme need for renovating single family units. Likewise, 22 respondents indicated no need for renovating existing apartment units, with 2 respondents saying there was extreme need for renovating existing apartment units.

Table II.58.70 How would you rate the need for renovation of existing units in the city? Linn County 2017 Survey of Rental Properties				
Need	Single Family	Apartments	Mobile Homes	Other Units
No Need	17	22	14	13
Low Need	16	16	15	14
Moderate Need	17	23	14	13
High Need	13	10	4	4
Extreme Need	2	2	1	1
Average Need	2.5	2.4	2.2	2.2

Respondents were also asked how they would rate the need for the constructing new units. As shown in Table II.58.71, 36 respondents said there was no need for new single family units, with 5 respondents saying there was extreme need for constructing new single family units. Likewise, 43 respondents indicated no need for new apartment units, with 5 respondents saying there was extreme need for constructing new apartment units.

Table II.58.71
How would you rate the need for construction of new units in the city?
 Linn County
 2017 Survey of Rental Properties

Need	Single Family	Apartments	Mobile Homes	Other Units
No Need	36	43	33	31
Low Need	14	15	10	7
Moderate Need	12	13	7	5
High Need	3	3	2	2
Extreme Need	5	5	4	3
Average Need	2	1.9	1.8	1.7

The 2017 Housing Needs Forecast reports housing demand projections from 2017 to 2050. Three possible economic futures portraying moderate, strong, and very strong growth were used to create three forecasts. The strong scenario is the base case, representing conditions as of today. The *moderate growth* scenario forecast projects household growth with the assumption of slower population and employment growth, where the *very strong growth* scenario incorporates assumptions of much stronger employment and population growth over the forecast horizon.

The primary objective of offering three alternative forecasts is to enhance planning capacity and to provide additional tools in order to assist state and local governments in their ongoing housing needs assessment, thereby facilitating informed discussion about housing demand at the local community level. These forecasts prove useful when interpreting the need for new or rehabilitated housing and whether single-family or rental housing activities might be best undertaken.

All three forecasts span the period of 2016 through 2050 and offer predictions of the demand for housing. However, only the strong growth scenario is reported here. The moderate and very strong scenarios are reported in the appendix.

This report uses the modified population projections based on projections released from Woods & Poole Economic, Inc (W&P).

Income categories were calculated using the Housing and Urban Development CHAS (Comprehensive Housing Affordability Strategy) data and are expressed as a percentage of area Median Family Income (MFI). This distribution is assumed to remain constant over the forecast horizon. Homeownership rates were forecasted based on historical trends.

Table II.58.72, shows the *strong growth scenario* for the Linn County. As can be seen there were 64,658 owner-occupied and 23,348 renter-occupied households in 2016, for a total of 88,006 households. In 2030, there will be a projected 100,070 households, of which 73,930 are projected to be owner occupied and the remaining 26,141 are expected to be renter-occupied.

By 2050, there are projected to be 79,481 owner-occupied households, of which 4,213 owner-occupied households are expected to have incomes of 0-30 percent of MFI and 13,478 are projected to have incomes of 50.1-80.0 percent of MFI. In 2050, there are projected to be 27,054 renter households, of which 8,079 renter households are expected to have incomes between 0 and 30.0 percent of median family income 5,562 renter households with incomes between 50.1-80.0



percent of MFI. Overall households are projected to reach 106,534 occupied units by 2050, of which 12,292 are expected to have incomes on between 0 and 30 percent of MFI.

Table II.58.72								
Housing Demand Forecast								
Linn County								
Strong Growth Scenario								
Income (% of MFI)	2016	2020	2025	2030	2035	2040	2045	2050
Owner								
0-30%	3,427	3,704	3,815	3,919	4,010	4,087	4,153	4,213
30.1-50%	5,929	6,409	6,600	6,780	6,937	7,070	7,185	7,289
50.1-80%	10,964	11,850	12,204	12,536	12,827	13,074	13,286	13,478
80.1-95%	6,177	6,676	6,876	7,063	7,227	7,366	7,485	7,593
95.1-115%	7,800	8,430	8,682	8,918	9,125	9,301	9,452	9,588
115+%	30,360	32,814	33,793	34,714	35,518	36,201	36,790	37,320
Total	64,658	69,884	71,969	73,930	75,643	77,098	78,352	79,481
Renter								
0-30%	6,972	7,564	7,689	7,807	7,907	7,985	8,041	8,079
30.1-50%	4,912	5,328	5,416	5,499	5,570	5,625	5,664	5,691
50.1-80%	4,800	5,207	5,293	5,374	5,444	5,497	5,536	5,562
80.1-95%	1,990	2,159	2,194	2,228	2,257	2,279	2,295	2,306
95.1-115%	1,767	1,917	1,949	1,979	2,004	2,024	2,038	2,048
115+%	2,906	3,153	3,205	3,254	3,296	3,328	3,352	3,368
Total	23,348	25,328	25,746	26,141	26,479	26,737	26,926	27,054
Total								
0-30%	10,400	11,268	11,503	11,725	11,917	12,071	12,194	12,292
30.1-50%	10,841	11,737	12,016	12,279	12,507	12,695	12,850	12,980
50.1-80%	15,764	17,058	17,497	17,911	18,271	18,571	18,822	19,040
80.1-95%	8,167	8,835	9,070	9,291	9,483	9,645	9,780	9,899
95.1-115%	9,567	10,347	10,630	10,897	11,129	11,324	11,490	11,636
115+%	33,267	35,967	36,998	37,968	38,814	39,530	40,142	40,688
Total	88,006	95,211	97,715	100,070	102,122	103,836	105,278	106,534