

**VOLUME II:  
LUCAS COUNTY**

**IOWA STATE  
PROFILE**

**Please visit the Iowa State Profile Dashboard:**

**[www.westernes.com/Iowa](http://www.westernes.com/Iowa)**

**For and online version of this profile with many additional features including:**

- **Mapping**
- **Interactive Charts and Tables**
- **Data Downloads**
- **Interactive Long Read**
- **Interactive Tour**
- **Jurisdiction to Jurisdiction Comparison**
- **Download Additional Reports**
- **And More**



## Lucas County

### DEMOGRAPHICS

#### Population Estimates

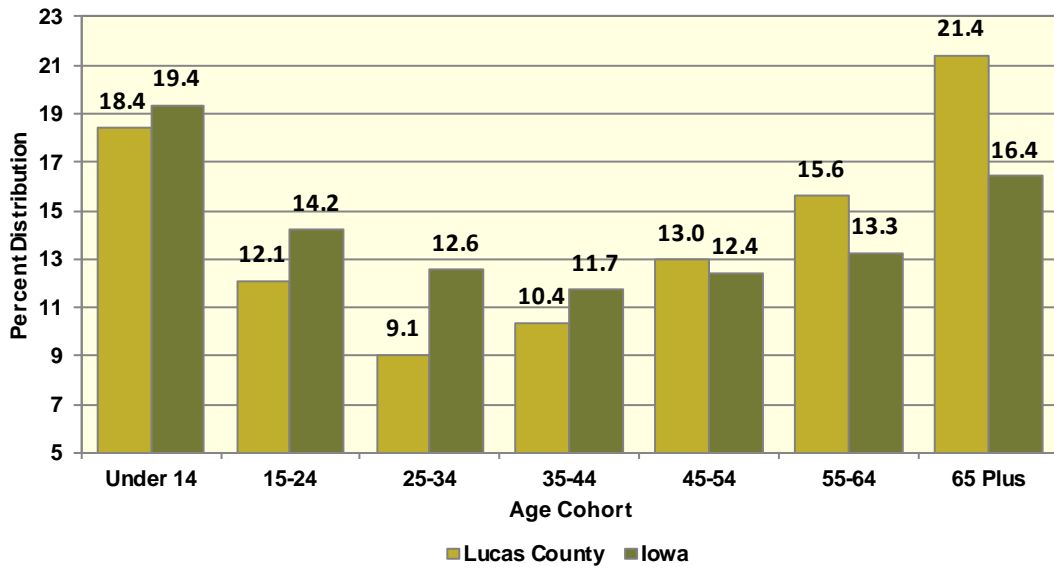
The Census Bureau's current census estimates indicate that Lucas County's population decreased from 8,898 in 2010 to 8,647 in 2016, or by 2.8 percent. This compares to a statewide population change of 2.9 percent over the period. The number of people from 25 to 34 years of age decreased by 5.8 percent, and the number of people from 55 to 64 years of age increased by 12.2 percent. The white population decreased by 3.5 percent, while the black population increased by 80 percent. The Hispanic population increased from 89 to 146 people between 2010 and 2016 or by 64 percent. These data are presented in Table II.60.1.

<b>Table II.60.1</b>						
<b>Profile of Population Characteristics</b>						
Lucas County vs. State of Iowa						
2010 Census and 2016 Current Census Estimates						
Subject	Lucas County			Iowa		
	2010 Census	Jul-16	% Change	2010 Census	Jul-16	% Change
<b>Population</b>	<b>8,898</b>	<b>8,647</b>	<b>-2.8%</b>	<b>3,046,355</b>	<b>3,134,693</b>	<b>2.9%</b>
<b>Age</b>						
Under 14 years	1,745	1,592	-8.8%	603,673	607,020	0.6%
15 to 24 years	1,008	1,047	3.9%	430,187	445,808	3.6%
25 to 34 years	831	783	-5.8%	382,583	394,373	3.1%
35 to 44 years	963	898	-6.7%	364,548	367,535	0.8%
45 to 54 years	1,352	1,122	-17%	439,726	389,744	-11.4%
55 to 64 years	1,205	1,352	12.2%	372,750	415,998	11.6%
65 and Over	1,794	1,853	3.3%	452,888	514,215	13.5%
<b>Race</b>						
White	8,801	8,491	-3.5%	2,839,615	2,864,884	0.9%
Black	20	36	80%	91,695	114,874	25.3%
American Indian and Alaskan Native	16	23	43.8%	13,563	15,924	17.4%
Asian	15	23	53.3%	54,232	78,735	45.2%
Native Hawaiian or Pacific Islander	3	3	0%	2,419	3,592	48.5%
Two or more races	43	71	65.1%	44,831	56,684	26.4%
<b>Ethnicity (of any race)</b>						
Hispanic or Latino	89	146	64%	151,544	182,606	20.5%

Table II.60.2, presents the population of Lucas County by age and gender from the 2010 Census and 2016 current census estimates. The 2010 Census count showed a total of 4,432 males, who accounted for 49.8 percent of the population, and the remaining 50.2 percent, or 4,466 persons, were female. In 2016, the number of males rose to 4,362 persons, and accounted for 50.4 percent of the population, with the remaining 49.6 percent, or 4,285 persons being female.

Table II.60.2 Population by Age and Gender Lucas County 2010 Census and Current Census Estimates							
Age	2010 Census			2016 Current Census Estimates			% Change 10-16
	Male	Female	Total	Male	Female	Total	
Under 14 years	921	824	1,745	815	777	1,592	-8.8%
15 to 24 years	528	480	1,008	561	486	1,047	3.9%
25 to 34 years	414	417	831	409	374	783	-5.8%
35 to 44 years	491	472	963	452	446	898	-6.7%
45 to 54 years	491	472	963	452	446	898	-6.7%
55 to 64 years	671	681	1,352	576	546	1,122	-17%
65 and Over	794	1,000	1,794	865	988	1,853	-2.8%
<b>Total</b>	<b>4,432</b>	<b>4,466</b>	<b>8,898</b>	<b>4,362</b>	<b>4,285</b>	<b>8,647</b>	<b>-2.8%</b>
<b>% of Total</b>	49.8%	50.2%	.	50.4%	49.6%	.	

**Diagram II.60.1**  
**Age Distribution**  
Lucas County  
2016 Census Population Estimates



According to data from the Census Bureau, between 1990 and 2000, the population in Lucas County increased from 9,070 to 9,422 persons, or by 3.9 percent. Between 2000 and 2010, Lucas County population, changed by -524 persons, to a total population of 8,898 persons. The most recent estimates indicated that Lucas County’s population fell an additional -251 persons since the 2010 Census, to 8,647 persons in July 2016.

<b>1990 Census</b>	<b>9,070</b>
Natural Increase 90-00	-85
Net Migration 90-00	437
<b>2000 Census</b>	<b>9,422</b>
Natural Increase 00-09	18
Net Migration 00-09	-492
<b>2009 Population Estimate</b>	<b>8,948</b>
<b>2010 Census</b>	<b>8,898</b>
Natural Increase 10-16	-55
Net Migration 10-16	-196
<b>2016 Population Estimate</b>	<b>8,647</b>

There are some important implications of these population growth estimates. Total population change is a combination of births, deaths, and the net migration of those arriving in and leaving the state. The result of births minus deaths is termed the *natural increase*. As shown in Table II.60.3, Lucas County had a natural increase, of -85 persons between 1990 and 2000. During the April 2000 to July 2009 period, Lucas County’s natural increase was estimated at 18 persons. Between 2010 and 2016, the natural increase was estimated at -55 persons, and the net migration was -196 persons.

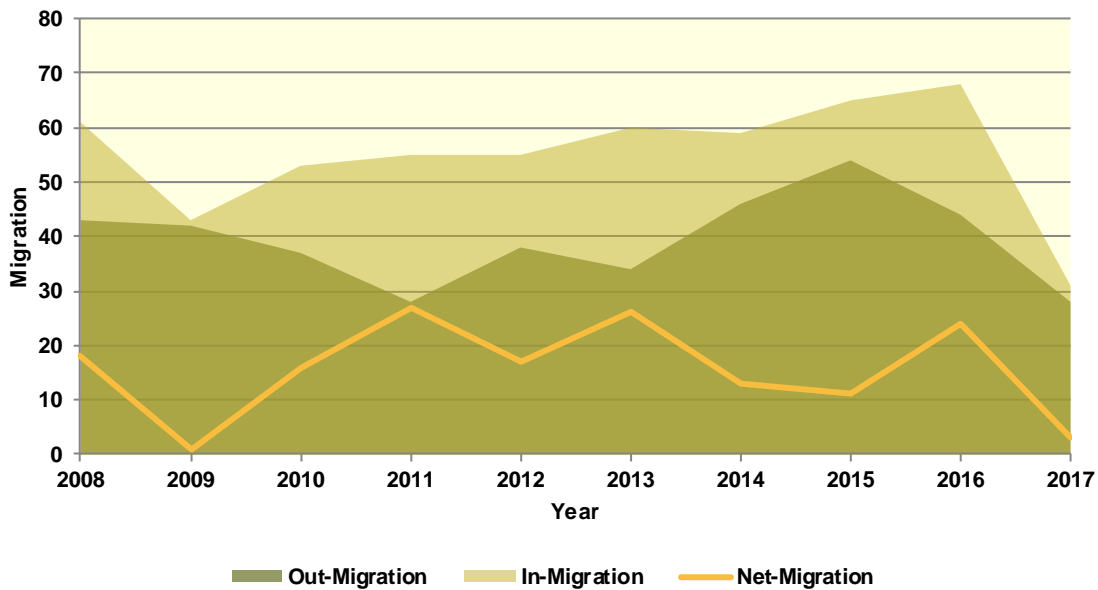
### Population Migration Trends

The Iowa Department of Transportation (IOWADOT) collects data on drivers who move to Iowa and exchange licenses from other states as well as those surrendering Iowa driver’s licenses when relocating to a different state. The IOWADOT data do not represent a precise count of migration, as they show only the net change in the number of driver’s licenses, but the data indicate the general direction of population movement.

As can be seen in Table II.60.4 in 2008 there was a total of 61 in-migrations with a total of 43 out-migrations, which led to a net-migration of 18 persons. The most recent first half 2017 data saw a net-migration of 3 persons, with 31 persons entering Lucas County and 28 persons leaving Lucas County.

Diagram II.60.2, shows in and out- migration as a shaded area, with net migration depicted as a line graph. As can be seen the maximum net migration occurred in 2011 with 27 people entering and the migration lowest net migration occurred in 2009 with 1 entering Lucas County.

**Diagram II.60.2**  
**Net In-migration by Gender**  
 Lucas County  
 Iowa DOT Data: 2008 – First Half 2017



The IOWADOT data also collects gender and age information. Table II.60.4, shows in- and out-migration by gender. In the most recent first half 2017 data, 133 percent of net-migrants, or 4 persons were male, with the remaining -33 percent, or -1 persons were female.

Gender	2008	2009	2010	2011	2012	2013	2014	2015	2016	2017- First Half
<b>In</b>										
Male	28	18	26	24	24	28	32	30	30	15
Female	33	25	27	31	31	32	27	35	38	16
<b>Total</b>	<b>61</b>	<b>43</b>	<b>53</b>	<b>55</b>	<b>55</b>	<b>60</b>	<b>59</b>	<b>65</b>	<b>68</b>	<b>31</b>
<b>Out</b>										
Male	15	18	21	12	11	18	20	21	27	11
Female	28	24	16	16	27	16	26	33	17	17
<b>Total</b>	<b>43</b>	<b>42</b>	<b>37</b>	<b>28</b>	<b>38</b>	<b>34</b>	<b>46</b>	<b>54</b>	<b>44</b>	<b>28</b>
<b>Net</b>										
Male	13	0	5	12	13	10	12	9	3	4
Female	5	1	11	15	4	16	1	2	21	-1
<b>Total</b>	<b>18</b>	<b>1</b>	<b>16</b>	<b>27</b>	<b>17</b>	<b>26</b>	<b>13</b>	<b>11</b>	<b>24</b>	<b>3</b>

Table II.60.5, shows net-migration for Lucas County by age range. The largest age cohort in the most recent 2017 net migration data was those in the age range of 26 to 35, with 6 persons entering Lucas County. Those in the age range of 56 to 65 had the lowest levels of net migration, with 5 persons leaving Lucas County.

<b>Table II.60.5</b>										
<b>Migration by Age Range</b>										
Lucas County										
Iowa DOT Data										
<b>Age Range</b>	<b>2008</b>	<b>2009</b>	<b>2010</b>	<b>2011</b>	<b>2012</b>	<b>2013</b>	<b>2014</b>	<b>2015</b>	<b>2016</b>	<b>2017 – First Half</b>
<b>In</b>										
14-17	1	0	0	1	2	1	0	1	0	0
18-22	9	7	11	7	7	7	3	6	13	6
23-25	6	1	2	4	4	7	11	7	2	0
26-35	16	14	14	15	12	8	18	13	17	8
36-45	5	4	9	12	10	11	7	12	9	6
46-55	11	7	7	9	11	10	8	14	18	5
56-65	4	7	5	6	7	9	7	6	6	1
66 +	9	3	5	1	2	7	5	6	3	5
<b>Total</b>	<b>61</b>	<b>43</b>	<b>53</b>	<b>55</b>	<b>55</b>	<b>60</b>	<b>59</b>	<b>65</b>	<b>68</b>	<b>31</b>
<b>Out</b>										
14-17	2	0	1	0	1	0	0	3	1	0
18-22	12	3	7	5	4	2	11	9	8	4
23-25	6	13	4	4	9	5	6	7	4	3
26-35	9	8	7	3	10	10	10	10	8	2
36-45	6	7	4	6	1	5	5	10	4	3
46-55	5	4	7	4	10	6	3	9	4	4
56-65	3	3	2	4	2	3	7	3	11	6
66 +	0	4	5	2	1	3	4	3	4	6
<b>Total</b>	<b>43</b>	<b>42</b>	<b>37</b>	<b>28</b>	<b>38</b>	<b>34</b>	<b>46</b>	<b>54</b>	<b>44</b>	<b>28</b>
<b>Net</b>										
14-17	-1	0	-1	1	1	1	0	-2	-1	0
18-22	-3	4	4	2	3	5	-8	-3	5	2
23-25	0	-12	-2	0	-5	2	5	0	-2	-3
26-35	7	6	7	12	2	-2	8	3	9	6
36-45	-1	-3	5	6	9	6	2	2	5	3
46-55	6	3	0	5	1	4	5	5	14	1
56-65	1	4	3	2	5	6	0	3	-5	-5
66 +	9	-1	0	-1	1	4	1	3	-1	-1
<b>Total</b>	<b>18</b>	<b>1</b>	<b>16</b>	<b>27</b>	<b>17</b>	<b>26</b>	<b>13</b>	<b>11</b>	<b>24</b>	<b>3</b>

### School Age Enrollment

Table II.60.6, show the school enrollment from the Iowa Department of Education for Lucas County. The school enrollment figures below are for both public and private schools. As can be seen below, in 2010 total enrollment was 1,497 students and was 1,308 in 2017, a change of -12.6 percent. Enrollment for students in grades 1 to 5 was 528 students in 2010 and 465 in 2017, which was a change of -11.9 percent. Likewise, 2010 enrollment for students in grades 9 to 12 was 462 and 419 in 2017, which was a change of -9.3 percent.

<b>Table II.60.6</b>						
<b>School Enrollment</b>						
Lucas County						
Iowa Department of Education						
<b>Year</b>	<b>Pre-K/K</b>	<b>Grades 1 - 5</b>	<b>Grades 6 - 8</b>	<b>Grades 9 - 12</b>	<b>Special Ed.</b>	<b>Total</b>
2000	147	561	344	457	37	1,546
2001	117	606	346	447	36	1,552
2002	133	605	355	458	18	1,569
2003	108	558	360	451	19	1,496
2004	123	597	382	490	27	1,619
2005	129	613	384	523	12	1,649
2006	108	577	403	549	0	1,637
2007	114	571	373	548	0	1,606
2008	136	571	392	548	18	1,647
2009	150	533	341	513	56	1,537
2010	168	528	339	462	68	1,497
2011	163	501	329	481	74	1,474
2012	165	473	330	468	72	1,436
2013	179	460	326	443	74	1,408
2014	167	458	332	436	66	1,393
2015	162	482	308	448	63	1,400
2016	173	469	286	426	79	1,354
2017	162	465	262	419	54	1,308
<b>% Change 10-17</b>	<b>-3.6%</b>	<b>-11.9%</b>	<b>-22.7%</b>	<b>-9.3%</b>	<b>-20.6%</b>	<b>-12.6%</b>

## Census Demographic Data

In the 1980, 1990, and 2000 decennial censuses, the Census Bureau released several tabulations in addition to the full SF1 100 percent count data including the one-in-six SF3 sample. These additional samples, such as the SF3, asked supplementary questions regarding income and household attributes that were not asked in the 100 percent count. In the 2010 decennial census, the Census Bureau did not collect additional sample data, such as the SF3, and thus many important housing and income concepts are not available in the 2010 Census.

To study these important concepts the Census Bureau distributes the American Community Survey every year to a sample of the population and quantifies the results as one-, three- and five-year averages. The one-year sample only includes responses from the year the survey was implemented, while the five-year sample includes responses over a five-year period. Since the five-year estimates include more responses, the estimates can be tabulated down to the Census tract level, and considered more robust than the one or three year sample estimates.

## Population Estimates

Table II.60.7, shows population by age for the 2000 and 2010 Census. The population changed by -5.6 percent overall between 2000 and 2010. Various age cohorts changed at different rates. The elderly population, or persons aged 65 or older, changed by -1.5 percent to a total of 1,794 persons in 2010. Those aged 25 to 34 changed by -14.9 percent, and those aged under 5 changed by -3.7 percent.



<b>Table II.60.7</b>					
<b>Population by Age</b>					
Lucas County					
2000 & 2010 Census SF1 Data					
Age	2000 Census		2010 Census		% Change 00-10
	Population	% of Total	Population	% of Total	
Under 5	569	6%	548	6.2%	-3.7%
5 to 19	2,078	22.1%	1,824	20.5%	-12.2%
20 to 24	431	4.6%	381	4.3%	-11.6%
25 to 34	976	10.4%	831	9.3%	-14.9%
35 to 54	2,528	26.8%	2,315	26%	-8.4%
55 to 64	1,019	10.8%	1,205	13.5%	18.3%
65 or Older	1,821	19.3%	1,794	20.2%	-1.5%
<b>Total</b>	<b>9,422</b>	<b>100.0%</b>	<b>8,898</b>	<b>100.0%</b>	<b>-5.6%</b>

The elderly population is further explored in Table II.60.8. Those aged 65 to 66 changed by 18 percent between 2000 and 2010, resulting in a population of 197 persons. Those aged 85 or older changed by -4.9 percent during the same time period, and resulted in 312 persons over age 85 in 2010.

<b>Table II.60.8</b>					
<b>Elderly Population by Age</b>					
Lucas County					
2000 & 2010 Census SF1 Data					
Age	2000 Census		2010 Census		% Change 00-10
	Population	% of Total	Population	% of Total	
65 to 66	167	9.2%	197	11%	18%
67 to 69	278	15.3%	276	15.4%	-0.7%
70 to 74	411	22.6%	395	22%	-3.9%
75 to 79	360	19.8%	344	19.2%	-4.4%
80 to 84	277	15.2%	270	15.1%	-2.5%
85 or Older	328	18%	312	17.4%	-4.9%
<b>Total</b>	<b>1,821</b>	<b>100.0%</b>	<b>1,794</b>	<b>100.0%</b>	<b>-1.5%</b>

Population by race and ethnicity is shown in Table II.60.9. The white population changed by -5.5 percent between 2000 and 2010, and resulted in representing 98.6 percent of the population in 2010. The black population changed by 41.7 percent, represented 0.2 percent of the population in 2010. The American Indian and Asian populations represented 0.2 and 0.2 percent, respectively, in 2010. As for ethnicity, the Hispanic population changed by 8.5 percent between 2000 and 2010, compared to the -5.7 percent growth rate for non-Hispanics.



<b>Table II.60.9</b> <b>Population by Race and Ethnicity</b> Lucas County 2000 & 2010 Census SF1 Data					
Race	2000 Census		2010 Census		% Change 00-10
	Population	% of Total	Population	% of Total	
White	9,275	98.4%	8,769	98.6%	-5.5%
Black	12	0.1%	17	0.2%	41.7%
American Indian	10	0.1%	16	0.2%	60%
Asian	28	0.3%	15	0.2%	-46.4%
Native Hawaiian/ Pacific Islander	1	0%	3	0%	200%
Other	35	0.4%	24	0.3%	-31.4%
Two or More Races	61	0.6%	54	0.6%	-11.5%
<b>Total</b>	<b>9,422</b>	<b>100.0%</b>	<b>8,898</b>	<b>100.0%</b>	<b>-5.6%</b>
<b>Hispanic</b>	82	0.9%	89	1%	8.5%
<b>Non-Hispanic</b>	9,340	99.1%	8,809	99%	-5.7%

Population by race and ethnicity through 2016 is shown in Table II.60.10. The white population represented 97.7 percent of the population in 2016, compared with black households accounting for 0.1 percent of the population. Hispanic households represented 0.4 percent of the population in 2016.

<b>Table II.60.10</b> <b>Population by Race and Ethnicity</b> Lucas County 2010 Census & 2016 Five-Year ACS				
Race	2010 Census		2016 Five-Year ACS	
	Population	% of Total	Population	% of Total
White	8,769	98.6%	8,498	97.7%
Black	17	0.2%	11	0.1%
American Indian	16	0.2%	27	0.3%
Asian	15	0.2%	0	0%
Native Hawaiian/ Pacific Islander	3	0%	0	0%
Other	24	0.3%	0	0%
Two or More Races	54	0.6%	164	1.9%
<b>Total</b>	<b>8,898</b>	<b>100.0%</b>	<b>8,700</b>	<b>100.0%</b>
<b>Non-Hispanic</b>	8,809	99%	8,663	99.6%
<b>Hispanic</b>	89	1%	37	0.4%

The population by race is broken down further by ethnicity in Table II.60.11. While the white non-Hispanic population changed by -5.6 percent between 2000 and 2010, the white Hispanic population changed by 32.4 percent. The black non-Hispanic population changed by 25 percent.

<b>Table II.60.11</b>					
<b>Population by Race and Ethnicity</b>					
Lucas County					
2000 & 2010 Census Data					
Race	2000		2010 Census		% Change 00 - 10
	Population	% of Total	Population	% of Total	
<b>Non-Hispanic</b>					
White	9,238	98.9%	8,720	99%	-5.6%
Black	12	0.1%	15	0.2%	25%
American Indian	10	0.1%	9	0.1%	-10%
Asian	27	0.3%	15	0.2%	-44.4%
Native Hawaiian/ Pacific Islander	1	0%	3	0%	200%
Other	1	0%	1	0%	0%
Two or More Races	51	0.5%	46	0.5%	-9.8%
<b>Total Non-Hispanic</b>	<b>9,340</b>	<b>100.0%</b>	<b>8,809</b>	<b>100.0%</b>	<b>-5.7%</b>
<b>Hispanic</b>					
White	37	45.1%	49	55.1%	32.4%
Black	0	0%	2	2.2%	
American Indian	0	0%	7	7.9%	
Asian	1	1.2%	0	0%	-100%
Native Hawaiian/ Pacific Islander	0	0%	0	0%	0%
Other	34	41.5%	23	25.8%	-32.4%
Two or More Races	10	12.2%	8	9%	-20%
<b>Total Hispanic</b>	<b>82</b>	<b>100.0%</b>	<b>89</b>	<b>100.0%</b>	<b>8.5%</b>
<b>Total Population</b>	<b>9,422</b>	<b>100.0%</b>	<b>8,898</b>	<b>100.0%</b>	<b>-5.6%</b>

The change in race and ethnicity between 2010 and 2016 is shown in Table II.60.12. During this time, the total non-Hispanic population was 8,663 persons in 2016. The Hispanic population was 37.

<b>Table II.60.12</b>				
<b>Population by Race and Ethnicity</b>				
Lucas County				
2010 Census & 2016 Five-Year ACS				
Race	2010 Census		2016 Five-Year ACS	
	Population	% of Total	Population	% of Total
<b>Non-Hispanic</b>				
White	8,720	99%	8,461	97.7%
Black	15	0.2%	11	0.1%
American Indian	9	0.1%	27	0.3%
Asian	15	0.2%	0	0%
Native Hawaiian/ Pacific Islander	3	0%	0	0%
Other	1	0%	0	0%
Two or More Races	46	0.5%	164	1.9%
<b>Total Non-Hispanic</b>	<b>8,809</b>	<b>100.0%</b>	<b>8,663</b>	<b>100.0%</b>
<b>Hispanic</b>				
White	49	55.1%	37	100%
Black	2	2.2%	0	0%
American Indian	7	7.9%	0	0%
Asian	0	0%	0	0%
Native Hawaiian/ Pacific Islander	0	0%	0	0%
Other	23	25.8%	0	0%
Two or More Races	8	9%	0	0%
<b>Total Non-Hispanic</b>	<b>89</b>	<b>100.0</b>	<b>37</b>	<b>100.0%</b>
<b>Total Population</b>	<b>8,898</b>	<b>100.0%</b>	<b>8,700</b>	<b>100.0%</b>

Households by type and tenure are shown in Table II.60.13. Family households represented 64.7 percent of households, while non-family households accounted for 35.3 percent. These changed from 66.4 and 33.6 percent, respectively.

<b>Table II.60.13</b>				
<b>Household Type by Tenure</b>				
Lucas County				
2010 Census SF1 & 2016 Five-Year ACS Data				
Household Type	2010 Census		2016 Five-Year ACS	
	Households	Households	Households	% of Total
Family Households	2,448	66.4%	2,378	64.7%
Married-Couple Family	2,021	82.6%	1,920	80.7%
Owner-Occupied	1,838	90.9%	1,789	93.2%
Renter-Occupied	183	9.1%	131	6.8%
Other Family	427	17.4%	458	18%
Male Householder, No Spouse Present	152	35.6%	148	33.2%
Owner-Occupied	111	73%	111	75%
Renter-Occupied	41	27%	37	25%
Female Householder, No Spouse Present	275	64.4%	310	60%
Owner-Occupied	173	62.9%	185	59.7%
Renter-Occupied	102	37.1%	125	40.3%
Non-Family Households	1,241	33.6%	1,300	35.3%
Owner-Occupied	773	62.3%	810	62.3%
Renter-Occupied	468	37.7%	490	37.7%
<b>Total</b>	<b>3,689</b>	<b>100.0%</b>	<b>3,678</b>	<b>100.0%</b>

The group quarters population was 78 in 2010, compared to 206 in 2000. Institutionalized populations experienced a -54.5 percent change between 2000 and 2010. Non-institutionalized populations experienced a -94.9 percent change during this same time period.

<b>Table II.60.14</b>					
<b>Group Quarters Population</b>					
Lucas County					
2000 & 2010 Census SF1 Data					
Group Quarters Type	2000 Census		2010 Census		% Change 00-10
	Population	% of Total	Population	% of Total	
<b>Institutionalized</b>					
Correctional Institutions	9	5.4%	0	0%	-100%
Juvenile Facilities	.	.	0	0%	.
Nursing Homes	143	85.6%	76	100%	-46.9%
Other Institutions	15	9%	0	0%	-100%
<b>Total</b>	<b>167</b>	<b>100.0%</b>	<b>76</b>	<b>100.0%</b>	<b>-54.5 %</b>
<b>Noninstitutionalized</b>					
College Dormitories	0	0%	0	0%	0%
Military Quarters	0	0%	0	0%	0%
Other Noninstitutionalized	39	100%	2	100%	-94.9%
<b>Total</b>	<b>39</b>	<b>100.0%</b>	<b>2</b>	<b>100.0%</b>	<b>-94.9%</b>
<b>Group Quarters Population</b>	<b>206</b>	<b>100.0%</b>	<b>78</b>	<b>100.0%</b>	<b>-62.1%</b>

The number of foreign born persons are shown in Table II.60.15. An estimated 1.6 percent of the population was born in Ukraine, some 1 percent were born in Russia, and another 0.1 percent were born in Mexico.

**Table II.60.15**  
**Place of Birth for the Foreign-Born Population**  
 Lucas County  
 2016 Five-Year ACS

Number	County	Number of Person	Percent of Total Population
#1 country of origin	Ukraine	136	1.6%
#2 country of origin	Russia	86	1%
#3 country of origin	Mexico	6	0.1%
#4 country of origin	Lithuania	5	0.1%
#5 country of origin	Germany	4	0%
#6 country of origin	Afghanistan	0	0%
#7 country of origin	Africa n.e.c	0	0%
#8 country of origin	Albania	0	0%
#9 country of origin	Argentina	0	0%
#10 country of origin	Armenia	0	0%

Limited English Proficiency and the language spoken at home are shown in Table II.60.16. An estimated 1.4 percent of the population speaks Russian, Polish, or other Slavic languages at home, followed by 0.4 percent speaking German or other West Germanic languages.

**Table II.60.16**  
**Limited English Proficiency and Language Spoken at Home**  
 Lucas County  
 2016 Five-Year ACS

Number	County	Number of Person	Percent of Total Population
#1 LEP Language	Russian, Polish, or other Slavic languages	113	1.4%
#2 LEP Language	German or other West Germanic languages	29	0.4%
#3 LEP Language	Spanish	6	0.1%
#4 LEP Language	Arabic	0	0%
#5 LEP Language	Chinese	0	0%
#6 LEP Language	French, Haitian, or Cajun	0	0%
#7 LEP Language	Korean	0	0%
#8 LEP Language	Other Asian and Pacific Island languages	0	0%
#9 LEP Language	Other Indo-European languages	0	0%
#10 LEP Language	Other and unspecified languages	0	0%

## Disability

The disability rate from the 2000 Census is shown in Table II.60.17. Some 19.6 percent of the population was disabled in 2000, or a total of 1,699 persons. The disability rate was highest for those over 65, with 39 percent disabled.

<b>Table II.60.17</b> <b>Disability by Age</b> Lucas County 2000 Census SF3 Data		
Age	Total	
	Disabled Population	Disability Rate
5 to 15	104	7%
16 to 64	944	17.1%
65 and older	651	39%
<b>Total</b>	<b>1,699</b>	<b>19.6%</b>

Table II.60.18 shows disability by type in 2000. There were 859 physical disabilities in 2000, some 536 employment disabilities, and 541 go-outside-home disabilities.

<b>Table II.60.18</b> <b>Total Disabilities Tallied: Aged 5 and Older</b> Lucas County 2000 Census SF3 Data	
Disability Type	Population
Sensory disability	443
Physical disability	859
Mental disability	509
Self-care disability	297
Employment disability	536
Go-outside-home disability	541
<b>Total</b>	<b>3,185</b>

Disability by age, as estimated by the 2016 ACS, is shown in Table II.60.19. The disability rate for females was 14.5 percent, compared to 16.5 percent for males. The disability rate changed precipitously higher with age, with 51.8 percent of those over 75 experiencing a disability.

<b>Table II.60.19</b> <b>Disability by Age</b> Lucas County 2016 Five-Year ACS Data						
Age	Male		Female		Total	
	Disabled Population	Disability Rate	Disabled Population	Disability Rate	Disabled Population	Disability Rate
Under 5	0	0%	0	0%	0	0%
5 to 17	25	3.2%	22	3.1%	47	3.2%
18 to 34	47	6.4%	27	4%	74	5.2%
35 to 64	242	14.2%	214	12.7%	456	13.5%
65 to 74	202	39.5%	116	25.2%	318	32.7%
75 or Older	197	56.9%	239	48.3%	436	51.8%
<b>Total</b>	<b>713</b>	<b>16.5%</b>	<b>618</b>	<b>14.5%</b>	<b>1,331</b>	<b>15.5%</b>

The number of disabilities by type, as estimated by the 2016 ACS, is shown in Table II.60.20. Some 9.2 percent have an ambulatory disability, 6.1 have an independent living disability, and 3.5 percent have a self-care disability.

<b>Table II.60.20</b>		
<b>Total Disabilities Tallied: Aged 5 and Older</b>		
Lucas County 2016 Five-Year ACS		
<b>Disability Type</b>	<b>Population with Disability</b>	<b>Percent with Disability</b>
Hearing disability	565	6.6%
Vision disability	254	3%
Cognitive disability	443	5.5%
Ambulatory disability	741	9.2%
Self-Care disability	282	3.5%
Independent living disability	400	6.1%

## Education

Education and employment data, as estimated by the 2016 ACS, is presented in Table II.60.21. In 2016, some 4,168 persons were employed and 224 were unemployed. This totaled a labor force of 4,392 persons. The unemployment rate for Lucas County was estimated to be 5.1 percent in 2016.

<b>Table II.60.21</b>	
<b>Employment, Labor Force and Unemployment</b>	
Lucas County 2016 Five-Year ACS Data	
<b>Employment Status</b>	<b>2016 Five-Year ACS</b>
Employed	4,168
Unemployed	224
<b>Labor Force</b>	<b>4,392</b>
Unemployment Rate	5.1%

In 2016, 93.8 percent of households in Lucas County had a high school education or greater.

<b>Table II.60.22</b>	
<b>High School or Greater Education</b>	
Lucas County 2016 Five-Year ACS Data	
<b>Education Level</b>	<b>Households</b>
High School or Greater	3,451
Total Households	3,678
<b>Percent High School or Above</b>	<b>93.8%</b>

As seen in Table II.60.23, some 44.2 percent of the population had a high school diploma or equivalent, another 31.4 percent have some college, 11.8 percent have a Bachelor's Degree, and 3.5 percent of the population had a graduate or professional degree.

<b>Table II.60.23</b>		
<b>Educational Attainment</b>		
Lucas County 2016 Five-Year ACS Data		
<b>Education Level</b>	<b>Population</b>	<b>Percent</b>
Less Than High School	613	9.1%
High School or Equivalent	2,975	44.2%
Some College or Associates Degree	2,117	31.4%
Bachelor's Degree	793	11.8%
Graduate or Professional Degree	235	3.5%
<b>Total Population Above 18 years</b>	<b>6,733</b>	<b>100.0%</b>

## ECONOMICS

### Labor Force

Table II.60.24, shows the labor force statistics for Lucas County from 1990 to the present. Over the entire series the lowest unemployment rate occurred in 2000 with a rate of 2.7 percent. The highest level of unemployment occurred during 1992 rising to a rate of 6.4 percent. This compared to a statewide low of 2.6 in 1999 and statewide high of 6.4 percent in 2009. Over the last year, the unemployment rate in Lucas County decreased from 3.6 percent in 2015 to 3.2 percent in 2016, which compared to a statewide decrease to 3.7 percent.

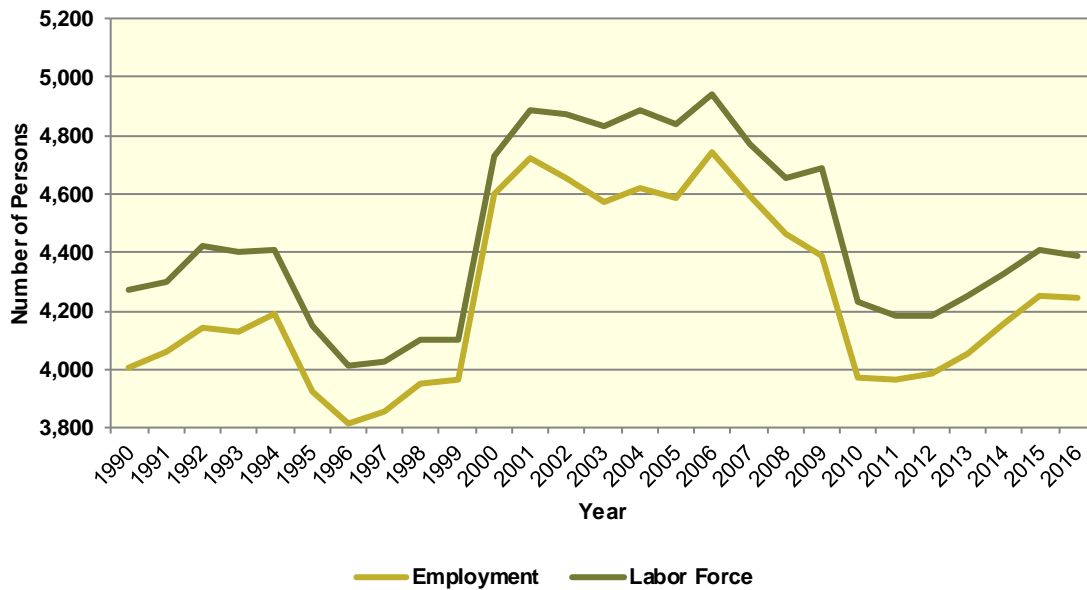
Year	Lucas County				Statewide Unemployment Rate
	Unemployment	Employment	Labor Force	Unemployment Rate	
1990	263	4,006	4,269	6.2%	4.4%
1991	239	4,061	4,300	5.6%	4.7%
1992	284	4,141	4,425	6.4%	4.5%
1993	278	4,126	4,404	6.3%	4%
1994	222	4,190	4,412	5%	3.5%
1995	226	3,924	4,150	5.4%	3.4%
1996	199	3,812	4,011	5%	3.5%
1997	167	3,857	4,024	4.2%	3.1%
1998	148	3,954	4,102	3.6%	2.7%
1999	136	3,966	4,102	3.3%	2.6%
2000	130	4,602	4,732	2.7%	2.6%
2001	168	4,720	4,888	3.4%	3.3%
2002	219	4,653	4,872	4.5%	4%
2003	256	4,576	4,832	5.3%	4.5%
2004	265	4,620	4,885	5.4%	4.5%
2005	250	4,588	4,838	5.2%	4.3%
2006	204	4,741	4,945	4.1%	3.7%
2007	184	4,590	4,774	3.9%	3.7%
2008	193	4,463	4,656	4.1%	4.2%
2009	300	4,390	4,690	6.4%	6.4%
2010	259	3,974	4,233	6.1%	6%
2011	221	3,964	4,185	5.3%	5.5%
2012	199	3,985	4,184	4.8%	5%
2013	200	4,054	4,254	4.7%	4.7%
2014	170	4,155	4,325	3.9%	4.3%
2015	159	4,249	4,408	3.6%	3.8%
2016	142	4,245	4,387	3.2%	3.7%

Diagram II.60.3, shows the employment and labor force for Lucas County. The difference between the two lines represents the number of unemployed persons. In the most recent year, employment stood at 4,245 persons, with the labor force reaching 4,387, indicating there were a total of 142 unemployed persons.





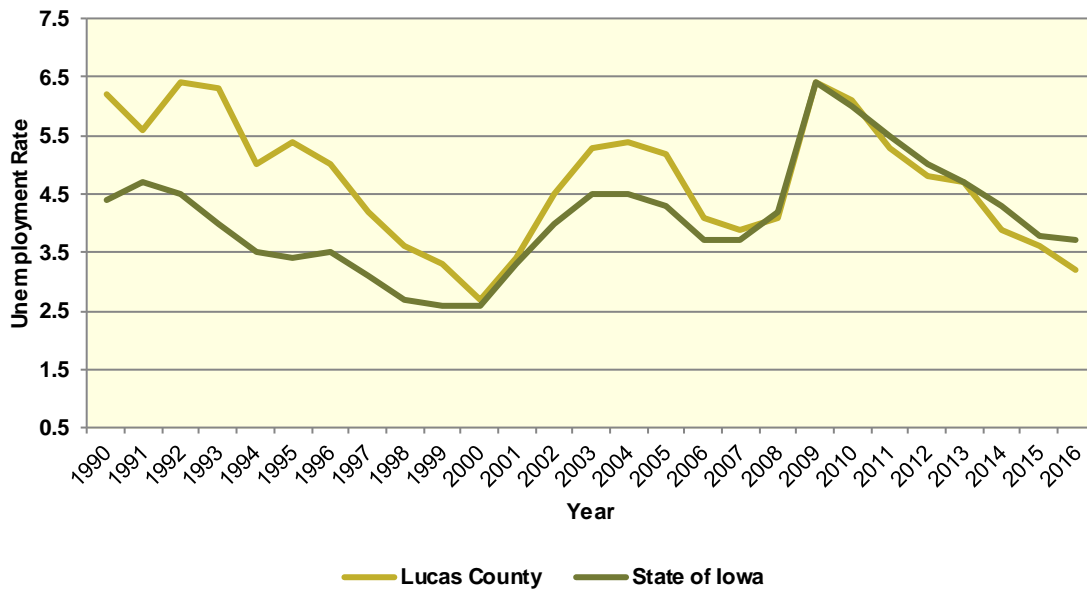
**Diagram II.60.3**  
**Employment and Labor Force**  
 Lucas County  
 1990 – 2016 BLS Data



**Unemployment**

Diagram II.60.4, shows the unemployment rate for both the State and Lucas County. During the 1990’s the average rate for Lucas County was 5.1 percent, which compared to 3.6 percent statewide. Between 2000 and 2010 the unemployment rate had an average of 4.5 percent, which compared to 4.1 percent statewide. Since 2010, the average unemployment rate was 4.5 percent. Over the course of the entire period the Lucas County had an average unemployment rate that higher than the State, 4.7 percent for Lucas County, versus 4.1 statewide.

**Diagram II.60.4**  
**Annual Unemployment Rate**  
 Lucas County  
 1990 – 2016 BLS Data



**Earnings and Employment**

The Bureau of Economic Analysis (B.E.A.) produces regional economic accounts, which provide a consistent framework for analyzing and comparing individual state and local area economies. Table II.60.25, shows total real earnings by industry for Lucas County. In the most recent 2016 estimate, the government and government enterprises industry had the largest total real earnings, with total real earnings reaching \$39,516,000. Between 2015 and 2016 the professional, scientific, and technical services industry saw the largest percentage increase, rising by 8 percent to 3,650,000 dollars.

**Table II.60.25**  
**Real Earnings by Industry**  
 Lucas County  
 BEA Table CA-5N Data (1,000's of 2016 Dollars)

NAICS Categories	2001	2010	2011	2012	2013	2014	2015	2016	% Change 15-16
Farm earnings	-1,703	11,305	17,960	13,928	23,283	15,778	13,110	5,412	-58.7
Forestry, fishing, related activities, and other	0	0	0	0	0	0	0	0	0
Mining	0	0	0	0	0	0	0	0	0
Utilities	0	0	0	0	0	0	0	0	0
Construction	0	9,274	11,440	0	11,857	11,037	9,508	9,356	-1.6
Manufacturing	13,529	9,893	10,745	9,451	9,648	10,195	10,953	11,177	2
Wholesale trade	4,083	1,370	1,184	1,089	959	1,164	1,455	1,198	-17.7
Retail trade	16,056	12,288	11,464	11,587	12,162	12,004	12,550	13,418	6.9
Transportation and warehousing	0	0	0	0	0	0	0	0	0
Information	1,154	857	873	795	730	739	659	646	-1.9
Finance and insurance	9,999	6,936	6,467	5,663	7,695	7,607	0	0	0
Real estate and rental and leasing	466	586	602	825	1,116	900	0	0	0
Professional and technical services	3,034	2,794	3,080	3,736	3,864	3,614	3,958	4,277	8
Management of companies and enterprises	0	0	0	0	0	0	0	0	0
Administrative and waste services	0	0	0	0	0	0	0	0	0
Educational services	89	0	0	0	0	0	0	0	0
Health care and social assistance	11,304	0	0	0	0	0	0	0	0
Arts, entertainment, and recreation	0	338	0	0	0	0	0	172	0
Accommodation and food services	0	1,263	0	0	0	0	0	1,198	0
Other services, except public administration	7,665	7,907	8,642	9,440	9,171	9,216	9,704	10,293	6.1
Government and government enterprises	32,958	40,181	39,320	38,479	39,058	39,531	39,944	39,516	-1.1
<b>Total</b>	<b>166,118</b>	<b>187,708</b>	<b>192,512</b>	<b>190,595</b>	<b>202,909</b>	<b>199,052</b>	<b>202,763</b>	<b>207,427</b>	<b>2.3</b>



Table II.60.26, shows the total employment by industry for the Lucas County. The most recent estimates show the government and government enterprises industry was the largest employer in Lucas County, with employment reaching 699 jobs in 2016. Between 2015 and 2016 the professional, scientific, and technical services industry saw the largest percentage increase, rising by 13 percent to 113 jobs.

**Table II.60.26**  
**Employment by Industry**  
Lucas County  
BEA Table CA25 Data

NAICS Categories	2001	2010	2011	2012	2013	2014	2015	2016	% Change 15-16
Farm earnings	841	613	611	595	604	591	596	592	-0.7
Forestry, fishing, related activities, and other	0	0	0	0	0	0	0	0	0
Mining	0	0	0	0	0	13	14	14	0
Utilities	0	0	0	0	0	0	0	0	0
Construction	0	170	175	0	223	212	195	188	-3.6
Manufacturing	308	172	174	172	172	168	174	174	0
Wholesale trade	69	49	44	39	35	45	56	55	-1.8
Retail trade	563	464	493	515	556	563	592	585	-1.2
Transportation and warehousing	0	0	0	0	0	0	0	0	0
Information	37	31	32	36	36	35	35	36	2.9
Finance and insurance	240	164	170	158	139	146	0	0	0
Real estate and rental and leasing	55	78	80	81	87	90	0	0	0
Professional and technical services	73	96	92	101	101	96	92	104	13
Management of companies and enterprises	0	0	0	0	0	0	0	0	0
Administrative and waste services	0	0	0	0	0	0	0	0	0
Educational services	10	0	0	0	0	0	0	0	0
Health care and social assistance	343	0	0	0	0	0	0	0	0
Arts, entertainment, and recreation	0	27	0	0	0	0	0	24	0
Accommodation and food services	0	119	0	0	0	0	0	94	0
Other services, except public administration	283	259	286	287	294	321	340	348	2.4
Government and government enterprises	784	751	737	731	723	715	712	699	-1.8
<b>Total</b>	<b>5,255</b>	<b>4,710</b>	<b>4,728</b>	<b>4,782</b>	<b>4,875</b>	<b>4,957</b>	<b>5,095</b>	<b>5,123</b>	<b>0.5</b>



Table II.60.27, shows the real average earnings per job by industry for Lucas County. These figures are calculated by dividing the total real earning displayed in Tables II.60.25 and II.60.26, by industry. In 2016, the manufacturing industry had the highest average earnings reaching 64,236 dollars. Between 2015 and 2016 the retail trade industry saw the largest percentage increase, rising by 8.2 percent to 19,543 dollars.

**Table II.60.27**  
**Real Earnings Per Job by Industry**  
 Lucas County  
 BEA Table CA5N and CA25 Data

NAICS Categories	2001	2010	2011	2012	2013	2014	2015	2016	% Change 15-16
Farm earnings	-2,025	18,441	29,395	23,408	38,547	26,697	21,997	9,142	-58.4
Forestry, fishing, related activities, and other	0	0	0	0	0	0	0	0	0
Mining	0	0	0	0	0	0	0	0	0
Utilities	0	0	0	0	0	0	0	0	0
Construction	0	54,556	65,372	0	53,168	52,063	48,757	49,766	2.1
Manufacturing	43,925	57,519	61,755	54,950	56,091	60,682	62,951	64,236	2
Wholesale trade	59,167	27,951	26,920	27,920	27,401	25,875	25,981	21,782	-16.2
Retail trade	28,518	26,482	23,253	22,498	21,874	21,322	21,200	22,937	8.2
Transportation and warehousing	0	0	0	0	0	0	0	0	0
Information	31,181	27,630	27,272	22,096	20,269	21,125	18,816	17,944	-4.6
Finance and insurance	41,661	42,293	38,042	35,839	55,361	52,101	0	0	0
Real estate and rental and leasing	8,468	7,509	7,524	10,187	12,833	10,002	0	0	0
Professional and technical services	41,561	29,107	33,476	36,988	38,260	37,645	43,027	41,125	-4.4
Management of companies and enterprises	0	0	0	0	0	0	0	0	0
Administrative and waste services	0	0	0	0	0	0	0	0	0
Educational services	8,916	0	0	0	0	0	0	0	0
Health care and social assistance	32,956	0	0	0	0	0	0	0	0
Arts, entertainment, and recreation	0	12,518	0	0	0	0	0	7,167	0
Accommodation and food services	0	10,612	0	0	0	0	0	12,745	0
Other services, except public administration	27,084	30,529	30,216	32,891	31,195	28,709	28,542	29,578	3.6
Government and government enterprises	42,038	53,503	53,352	52,639	54,022	55,288	56,102	56,532	0.8
<b>Total</b>	<b>31,611</b>	<b>39,853</b>	<b>40,718</b>	<b>39,857</b>	<b>41,622</b>	<b>40,156</b>	<b>39,796</b>	<b>40,489</b>	<b>1.7</b>

Table II.60.28 shows total employment and real personal income for the years of 1969 to 2016. As can be seen in total real personal income in 2016, comprising all wage and salary earnings, proprietorship income, dividends, interest, rents, and transfer payments, was \$349,146,000 a 0.8 percent change between 2015 and 2016. Table II.60.28, shows further annual data for the years 1969 through 2016. In 2010, total employment was 4,710 and 5,123 in 2016, which a change of 0.5 percent over this period.

**Table II.60.28**  
**Total Employment and Real Personal Income**  
 Lucas County  
 BEA Data 1969 Through 2015

Year	1,000s of 2016 Dollars						Per Capita Income	Total Employment	Average Real Earnings Per Job
	Earnings	Social Security Contributions	Residents Adjustments	Dividends, Interest, Rents	Transfer Payments	Personal Income			
1969	134,954	8,594	7,322	26,607	23,465	183,754	17,662	4,413	30,582
1970	141,967	8,659	7,485	31,507	24,814	197,114	19,369	4,464	31,800
1971	138,790	9,353	7,416	29,972	26,122	192,947	18,715	4,568	30,382
1972	150,335	9,763	8,545	31,928	27,104	208,148	19,929	4,555	33,003
1973	167,165	11,617	8,989	35,434	29,666	229,636	22,044	4,645	35,988
1974	135,811	12,523	9,441	37,473	32,096	202,298	19,666	4,669	29,088
1975	141,940	12,576	9,296	39,005	35,593	213,259	20,689	4,754	29,858
1976	155,985	13,099	9,923	39,488	35,766	228,063	22,206	4,869	32,038
1977	132,274	12,398	10,951	42,436	35,871	209,134	20,520	4,862	27,206
1978	158,035	13,488	12,398	45,139	37,528	239,612	23,358	5,048	31,307
1979	148,900	14,654	10,786	48,089	38,054	231,174	22,168	5,137	28,984
1980	138,112	14,164	9,540	54,957	40,603	229,048	22,217	5,035	27,431
1981	135,893	14,851	8,746	61,729	42,046	233,565	22,740	5,003	27,164
1982	127,368	14,416	7,461	67,070	43,385	230,867	22,468	4,951	25,727
1983	118,410	14,413	6,748	67,268	43,348	221,361	21,983	4,998	23,691
1984	125,306	14,957	6,821	70,259	43,994	231,425	23,050	4,945	25,341
1985	127,901	15,452	6,548	66,817	44,474	230,288	23,573	4,885	26,182
1986	137,941	16,115	6,601	67,805	44,191	240,424	25,185	4,788	28,809
1987	144,204	16,276	6,916	61,744	43,313	239,901	25,563	4,669	30,886
1988	141,185	17,206	7,017	62,086	43,215	236,296	25,424	4,788	29,488
1989	145,717	17,709	7,319	62,238	42,951	240,516	26,208	4,843	30,088
1990	145,404	17,747	6,782	58,460	44,915	237,814	26,252	4,876	29,820
1991	146,026	18,299	6,383	56,474	46,366	236,950	25,850	4,963	29,423
1992	149,352	18,081	7,192	57,001	47,666	243,130	26,623	4,920	30,357
1993	139,753	17,956	6,648	55,066	48,272	231,783	25,246	4,900	28,521
1994	153,176	18,737	6,741	62,364	50,091	253,634	27,617	4,997	30,654
1995	121,071	15,647	13,611	60,826	50,852	230,713	24,984	4,831	25,061
1996	133,505	14,830	14,516	63,682	52,543	249,416	26,886	4,916	27,158
1997	144,004	17,379	13,983	64,996	52,824	258,429	27,507	5,055	28,487
1998	149,931	18,888	14,186	68,215	52,418	265,862	28,217	5,372	27,910
1999	156,063	19,172	16,128	63,710	55,834	272,563	28,808	5,405	28,874
2000	160,691	19,250	17,538	67,168	56,232	282,379	30,140	5,481	29,318
2001	166,118	20,156	6,106	64,562	58,249	274,880	29,287	5,255	31,611
2002	169,499	20,392	8,452	58,521	58,838	274,918	29,371	5,097	33,255
2003	172,422	20,718	10,867	59,769	60,777	283,117	30,170	5,082	33,928
2004	187,582	21,039	13,918	59,469	62,207	302,136	31,777	5,123	36,615
2005	185,156	21,019	16,636	51,241	63,198	295,212	31,199	5,030	36,810
2006	178,595	21,059	18,771	54,374	65,976	296,656	31,792	4,987	35,812
2007	175,694	20,874	22,029	60,068	67,054	303,971	32,756	4,924	35,681
2008	187,145	21,297	24,581	58,885	74,838	324,152	35,477	4,816	38,859
2009	190,356	22,150	19,836	56,015	76,078	320,135	35,777	4,723	40,304
2010	187,708	21,694	20,325	51,136	78,891	316,366	35,583	4,710	39,854
2011	192,512	19,360	20,169	56,023	78,243	327,587	37,066	4,728	40,717
2012	190,595	19,321	22,026	58,509	78,385	330,194	37,720	4,782	39,857
2013	202,909	22,256	21,131	60,891	77,351	340,027	38,985	4,875	41,622
2014	199,052	22,452	21,885	61,503	80,723	340,712	39,230	4,957	40,156
2015	202,763	23,353	22,488	61,480	83,012	346,391	39,852	5,095	39,796
2016	207,427	24,732	23,201	62,010	81,240	349,146	40,378	5,123	40,489



Diagram II.60.5, shows real average earnings per job for Lucas County from 1990 to 2016. Over this period the average earning per job for Lucas County was \$34,109, which was lower than the statewide average of \$43,526 over the same period.

**Diagram II.60.5**  
**Real Average Earnings Per Job**  
 Lucas County  
 BEA Data 1990 - 2016

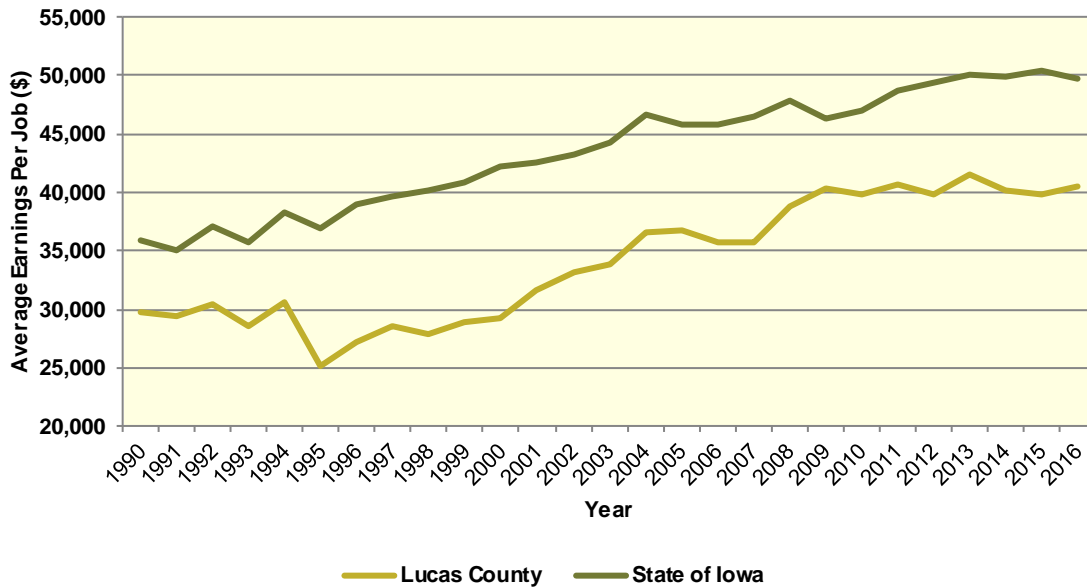
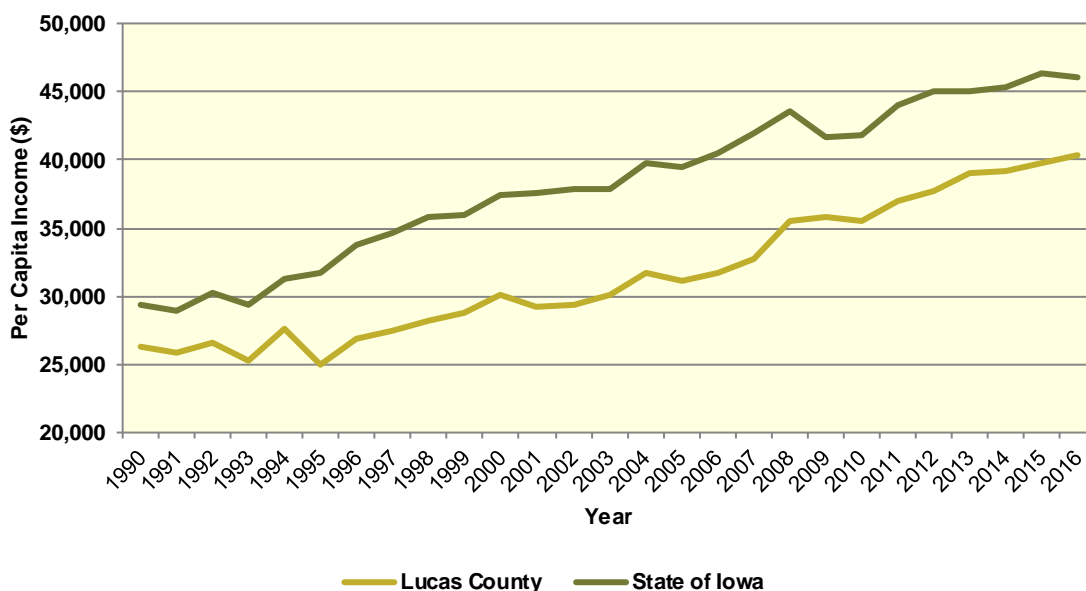


Diagram II.60.6, shows real per capita income for the Lucas County from 1990 to 2016, which is calculated by dividing total personal income from all sources by population. Per capita income is a broader measure of wealth than real average earnings per job, which only captures the working population. Over this period, the real per capita income for Lucas County was \$31,650, which was lower than the statewide average of \$38,254 over the same period.

**Diagram II.60.6**  
**Real Per Capita Income**  
 Lucas County  
 BEA Data 1990 - 2016



**Quarterly Census of Employment and Wages**

The BLS produces the Quarterly Census of Employment and Wages (QCEW), which reports monthly data on employment and quarterly data on wages and number of business establishments. QCEW employment data represent only filled jobs, whether full or part-time, temporary or permanent, by place of work the pay period. If data do not meet BLS or State agency disclosure standards they are displayed as (ND) and not disclosed. Data from this series are from the period of January 2006 through December 2016 and are presented in Table II.60.29, with the 2016 information considered preliminary (p). Between 2015 and 2016, total annual employment increased from 3,347 persons in 2015 to 3,356 in 2016, a change of 0.3 percent.

**Table II.60.29**  
**Total Monthly Employment**  
 Lucas County  
 BLS QCEW Data, 2001–2016(p)

Period	2006	2007	2008	2009	2010	2011	2012	2013	2014	2015	2016
Jan	3,295	3,379	3,145	3,115	3,066	3,053	3,137	3,175	3,160	3,352	3,299
Feb	3,335	3,359	3,126	3,052	3,041	3,032	3,077	3,115	3,121	3,367	3,295
Mar	3,380	3,442	3,134	3,046	3,047	3,059	3,135	3,134	3,136	3,400	3,296
Apr	3,444	3,455	3,195	3,108	3,037	3,090	3,171	3,146	3,227	3,362	3,324
May	3,605	3,423	3,238	3,166	3,082	3,111	3,190	3,172	3,265	3,397	3,377
Jun	3,552	3,484	3,286	3,242	3,186	3,207	3,248	3,293	3,343	3,475	3,454
Jul	3,412	3,350	3,178	3,137	3,134	3,120	3,179	3,222	3,255	3,293	3,368
Aug	3,425	3,305	3,164	3,101	3,140	3,123	3,187	3,185	3,216	3,296	3,328
Sep	3,443	3,298	3,192	3,088	3,047	3,141	3,189	3,224	3,244	3,302	3,321
Oct	3,383	3,217	3,197	3,126	3,061	3,152	3,197	3,223	3,237	3,288	3,386
Nov	3,415	3,276	3,221	3,157	3,114	3,165	3,208	3,253	3,284	3,322	3,397
Dec	3,418	3,300	3,211	3,154	3,119	3,205	3,300	3,227	3,287	3,312	3,432
<b>Annual</b>	<b>3,426</b>	<b>3,357</b>	<b>3,191</b>	<b>3,124</b>	<b>3,090</b>	<b>3,122</b>	<b>3,185</b>	<b>3,197</b>	<b>3,231</b>	<b>3,347</b>	<b>3,356</b>
% Change	.	-2%	-4.9%	-2.1%	-1.1%	1%	2%	0.4%	1.1%	3.6%	0.3%



The QCEW also reports average weekly wages, which represents total compensation paid during the calendar quarter, regardless of when services were performed. The BLS QCEW data indicated average weekly wages were \$733 in 2015. In 2016, average weekly wages saw an increased of 4.4 percent over the prior year, rising to \$765, or by 32 dollars. These data are shown in Table II.60.30.

<b>Table II.60.30</b> <b>Average Weekly Wages</b> Lucas County BLS QCEW Data, 2001–2016(p)						
Year	First Quarter	Second Quarter	Third Quarter	Fourth Quarter	Annual	% Change
2001	453	480	475	503	478	
2002	481	502	484	523	498	4.2%
2003	488	502	486	529	501	0.6%
2004	498	509	488	536	508	1.4%
2005	527	547	562	524	540	6.3%
2006	568	514	558	550	547	1.3%
2007	602	546	598	589	583	6.6%
2008	630	578	622	606	609	4.5%
2009	645	594	639	673	638	4.8%
2010	601	591	650	703	637	-0.2%
2011	635	614	696	713	665	4.4%
2012	636	664	648	699	662	-0.5%
2013	646	683	676	738	686	3.6%
2014	676	695	691	779	711	3.6%
2015	686	717	718	813	733	3.1%
2016(p)	705	776	809	770	765	4.4%

Total business establishments reported by the QCEW are displayed in Table II.60.31. Between 2015 and 2016, the total number of business establishments in Lucas County remained unchanged by 4.4 percent, from 234 to 234 establishments.

<b>Table II.60.31</b> <b>Number of Business Establishments</b> Lucas County BLS QCEW Data, 2001–2016(p)						
Year	First Quarter	Second Quarter	Third Quarter	Fourth Quarter	Annual	% Change
2001	254	256	236	239	246	
2002	238	239	234	232	236	-4.1%
2003	241	241	239	241	241	2.1%
2004	240	244	239	238	240	-0.4%
2005	234	232	234	229	232	-3.3%
2006	225	231	231	226	228	-1.7%
2007	224	223	226	227	225	-1.3%
2008	224	223	224	225	224	-0.4%
2009	218	216	216	212	216	-3.6%
2010	212	213	223	225	218	0.9%
2011	221	226	231	232	228	4.6%
2012	228	229	227	227	228	(ND)%
2013	228	229	229	229	229	0.4%
2014	227	231	233	231	231	0.9%
2015	236	236	233	231	234	1.3%
2016	237	234	232	231	234	(ND)%

## Iowa Department of Revenue

The Iowa Department of Revenue releases annual income tax statistics. Table II.60.32, shows the number of returns by adjusted gross income. For taxpayer confidentiality, if the number of returns was fewer than 5, the data was redacted. As a result the number of returns reported maybe slightly lower than the actual returns. Most redacted records occurred in the highest income brackets. The table below gives an accurate measure of the income distribution in Lucas County.

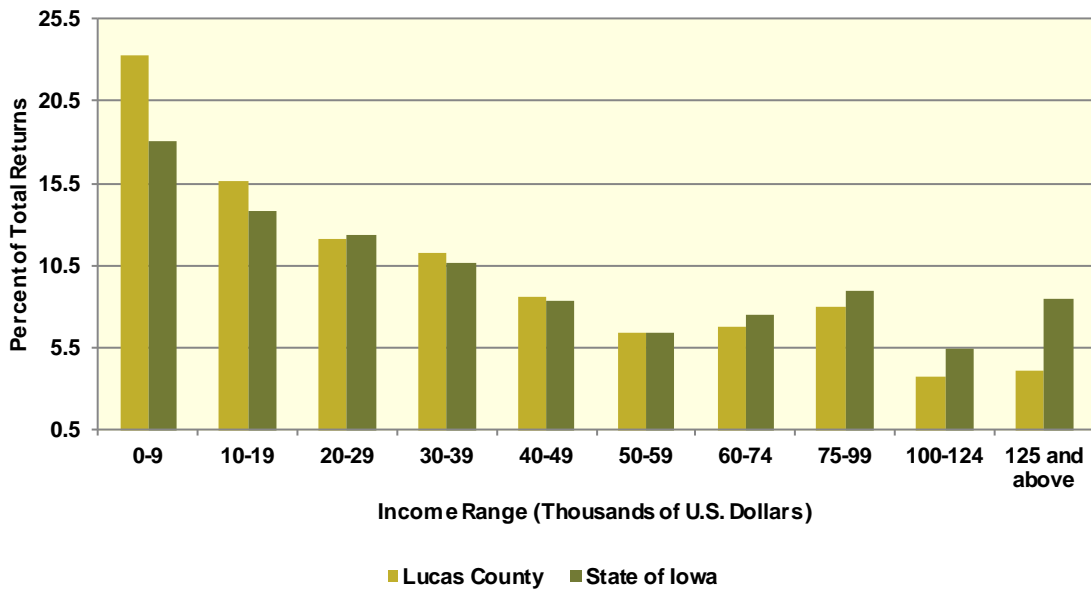
As can be seen below, the total number of returns between 2010 and 2015 increased by 2.8 percent, with 157 returns reported in 2015, which was the most recent year available. Between 2010 and 2015, the adjusted gross income class that saw the largest change was \$0-9,999 with a change of 76.4 percent. This compared to the income class of \$75,000-99,999, which saw the lowest percentage change between 2010 and 2015 of -11.1 percent.

**Table II.60.32**  
**Number of Tax Returns by Adjusted Gross Income**  
 Lucas County  
 Iowa DOR 2002 - 2015

Year	\$0 – 9,999	\$10,000 – 19,999	\$20,000 – 29,999	\$30,000 – 39,999	\$40,000 – 49,999	\$50,000 – 59,999	\$60,000 – 74,999	\$75,000 – 99,999	\$100,000 – 124,999	\$125,000 and above	Total
2002	969	677	511	442	335	244	240	136	41	51	3,646
2003	1,006	617	531	419	326	229	261	171	34	52	3,646
2004	1,000	622	496	427	348	246	256	201	48	55	3,699
2005	971	634	466	392	370	251	267	205	69	62	3,687
2006	986	600	478	421	336	268	262	246	72	70	3,739
2007	1,031	625	468	419	359	264	280	264	88	85	3,883
2008	983	626	515	363	357	234	278	274	97	90	3,817
2009	956	578	511	391	294	228	296	284	106	81	3,725
2010	906	639	484	375	314	266	296	274	101	89	3,744
2011	952	621	506	369	321	242	275	287	120	101	3,794
2012	937	592	496	400	295	250	279	308	108	116	3,781
2013	942	617	492	400	341	229	263	307	124	119	3,834
2014	920	603	471	395	326	268	258	315	149	131	3,836
2015	898	603	465	435	330	248	263	307	144	157	3,850
<b>Change 10 - 15</b>	<b>-0.9%</b>	<b>-5.6%</b>	<b>-3.9%</b>	<b>16%</b>	<b>5.1%</b>	<b>-6.8%</b>	<b>-11.1%</b>	<b>12%</b>	<b>42.6%</b>	<b>76.4%</b>	<b>2.8%</b>



**Diagram II.60.7**  
**2015 Income Distribution**  
 Lucas County  
 2015 Iowa DOR Data



**Poverty**

Poverty is the condition of having insufficient resources or income. In its extreme form, poverty is a lack of basic human needs, such as adequate and healthy food, clothing, housing, water, and health services. According to the Census Bureau’s Small Area Income and Poverty Estimates Program, the number of individuals in poverty decreased from 1,534 in 2010 to 1,268 in 2016, with the poverty rate reaching 14.9 percent in 2016. This compared to a state poverty rate of 11.7 percent and a national rate of 14 percent in 2016. Table II.60.33, at right, presents poverty data for the county.

Year	Persons in Poverty	Poverty Rate
2000	1,102	11.8%
2001	1,082	11.6%
2002	1,141	12.1%
2003	1,125	11.7%
2004	1,293	13.5%
2005	1,343	14.2%
2006	1,346	14.4%
2007	1,290	13.9%
2008	1,373	15%
2009	1,513	16.7%
2010	1,534	17.5%
2011	1,530	17.5%
2012	1,325	15.3%
2013	1,305	15.1%
2014	1,376	16%
2015	1,259	14.7%
2016	1,268	14.9%

The rate of poverty for Lucas County is shown in Table II.60.34. In 2016, there were an estimated 910 persons living in poverty. This represented a 10.6 percent poverty rate, compared to 13.7 percent poverty in 2000. In 2016, some 6.7 percent of those in poverty were under age 6, and 18.1 percent were 65 or older.

<b>Table II.60.34 Poverty by Age</b> Lucas County 2000 Census SF3 & 2016 Five-Year ACS Data				
<b>Age</b>	<b>2000 Census</b>		<b>2016 Five-Year ACS</b>	
	<b>Persons in Poverty</b>	<b>% of Total</b>	<b>Persons in Poverty</b>	<b>% of Total</b>
Under 6	128	10.2%	61	6.7%
6 to 17	330	26.2%	152	16.7%
18 to 64	642	51%	532	58.5%
65 or Older	160	12.7%	165	18.1%
<b>Total</b>	<b>1,260</b>	<b>100.0%</b>	<b>910</b>	<b>100.0%</b>
<b>Poverty Rate</b>	<b>13.7%</b>	.	<b>10.6%</b>	.

## HOUSING

The Census Bureau estimates that the total number of housing units decreased by -1 percent in Lucas County between 2010 and 2016, from 4,238 to 4,196. This compared to an estimated 3.3 percent increase statewide, as shown in Table II.60.35.

### Housing Production

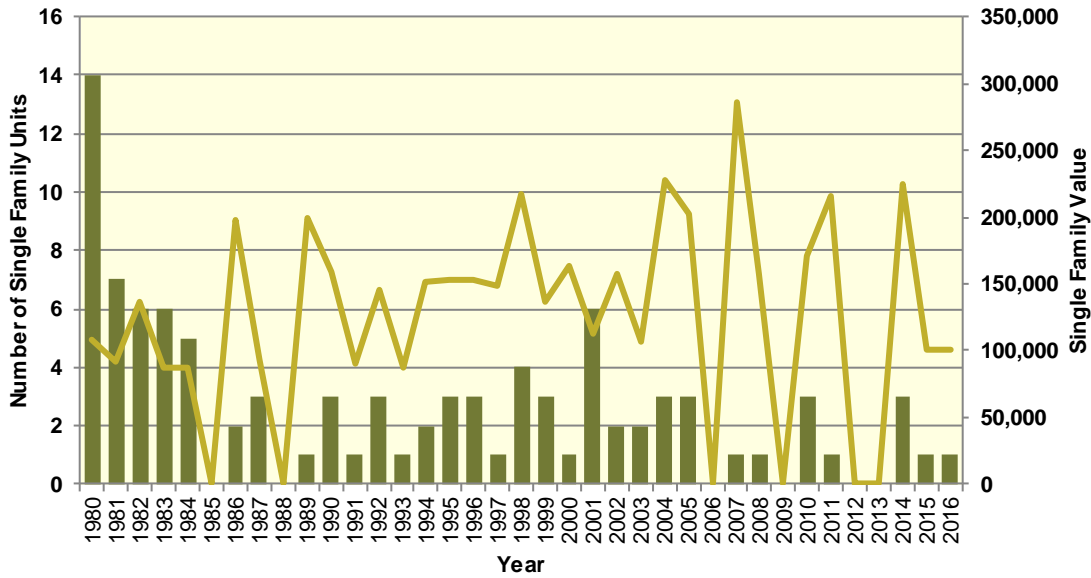
The Census Bureau reports building permit authorizations and “per unit” valuation of building permits by county annually. Single-family construction usually represents most residential development in the county. Single-family building permit authorizations in Lucas County remained unchanged from 1 authorization in 2015 to 1 in 2016.

The real value of single-family building permits decreased from \$101,317 in 2015 to \$100,000 in 2016. This compares to an increase in permit value statewide, with values rising from \$234,346 in 2015 to \$235,750 in 2016. Additional details are given in Table II.60.36.

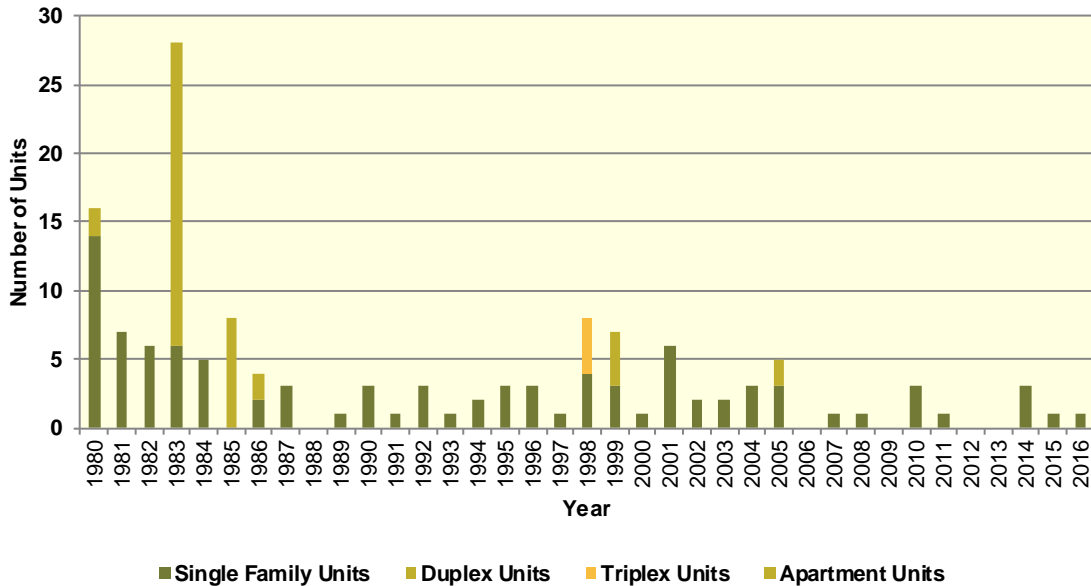
<b>Table II.60.35 Housing Units</b> State of Iowa vs. Lucas County 2000 and 2016 Census Data and Intercensal Estimates				
<b>Subject</b>	<b>Iowa</b>	<b>% Growth Since Census</b>	<b>Lucas County</b>	<b>% Growth Since Census</b>
2000 Census Base	1,232,625	.	4,236	.
2010 Census	1,336,417	8.4%	4,238	0%
July 2011 Estimate	1,341,974	0.4%	4,230	-0.2%
July 2012 Estimate	1,346,403	0.7%	4,227	-0.3%
July 2013 Estimate	1,353,274	1.3%	4,219	-0.4%
July 2014 Estimate	1,362,458	1.9%	4,209	-0.7%
July 2015 Estimate	1,370,778	2.6%	4,205	-0.8%
July 2016 Estimate	1,380,162	3.3%	4,196	-1%

<b>Table II.60.36</b> <b>Building Permits and Valuation</b> Lucas County Census Bureau Data, 1980–2016							
Year	Authorized Construction in Permit Issuing Areas					Per Unit Valuation, (Real 2016\$)	
	Single-Family	Duplex Units	Tri- and Four-Plex	Multi-Family Units	Total Units	Single-Family Units	Multi-Family Units
1980	14	2	0	0	16	107,699	0
1981	7	0	0	0	7	91,213	0
1982	6	0	0	0	6	135,885	0
1983	6	0	0	22	28	87,443	68,570
1984	5	0	0	0	5	87,201	0
1985	0	0	0	8	8	0	41,618
1986	2	2	0	0	4	198,473	0
1987	3	0	0	0	3	93,058	0
1988	0	0	0	0	0	0	0
1989	1	0	0	0	1	199,031	0
1990	3	0	0	0	3	159,101	0
1991	1	0	0	0	1	90,454	0
1992	3	0	0	0	3	145,294	0
1993	1	0	0	0	1	87,922	0
1994	2	0	0	0	2	151,035	0
1995	3	0	0	0	3	152,883	0
1996	3	0	0	0	3	152,572	0
1997	1	0	0	0	1	148,571	0
1998	4	0	4	0	8	216,930	0
1999	3	4	0	0	7	136,878	0
2000	1	0	0	0	1	163,310	0
2001	6	0	0	0	6	113,329	0
2002	2	0	0	0	2	157,253	0
2003	2	0	0	0	2	106,415	0
2004	3	0	0	0	3	228,252	0
2005	3	2	0	0	5	202,835	0
2006	0	0	0	0	0	0	0
2007	1	0	0	0	1	286,238	0
2008	1	0	0	0	1	157,215	0
2009	0	0	0	0	0	0	0
2010	3	0	0	0	3	170,648	0
2011	1	0	0	0	1	215,750	0
2012	0	0	0	0	0	0	0
2013	0	0	0	0	0	0	0
2014	3	0	0	0	3	224,908	0
2015	1	0	0	0	1	101,317	0
2016	1	0	0	0	1	100,000	0

**Diagram II.60.8**  
**Single Family Permits**  
 Lucas County  
 Census Bureau Data, 1980–2016



**Diagram II.60.9**  
**Total Permits by Unit Type**  
 Lucas County  
 Census Bureau Data, 1980–2016



## Housing Characteristics

Housing types by unit are shown in Table II.60.37. In 2016, there were 4,219 housing units, up from 4,239 in 2000. Single-family units accounted for 85.4 percent of units in 2016, compared to 80.1 in 2000. Apartment units accounted for 6.9 percent in 2016, compared to 6.4 percent in 2000.

<b>Table II.60.37</b>				
<b>Housing Units by Type</b>				
Lucas County				
2000 Census SF3 & 2016 Five-Year ACS Data				
Unit Type	2000 Census		2016 Five-Year ACS	
	Units	% of Total	Units	% of Total
Single-Family	3,397	80.1%	3,601	85.4%
Duplex	92	2.2%	85	2%
Tri- or Four-Plex	164	3.9%	32	0.8%
Apartment	273	6.4%	292	6.9%
Mobile Home	313	7.4%	209	5%
Boat, RV, Van, Etc.	0	0%	0	0%
<b>Total</b>	<b>4,239</b>	<b>100.0%</b>	<b>4,219</b>	<b>100.0%</b>

Some 87 percent of housing was occupied in 2010, compared to 89.9 percent in 2000. Owner-occupied housing changed -3 percent between 2000 and 2010, ending with owner-occupied units representing 78.5 percent of unit. Vacant units changed by 28.3 percent, resulting in 549 vacant units in 2010.

<b>Table II.60.38</b>					
<b>Housing Units by Tenure</b>					
Lucas County					
2000 & 2010 Census SF1 Data					
Tenure	2000 Census		2010 Census		% Change 00-10
	Units	% of Total	Units	% of Total	
Occupied Housing Units	3,811	89.9%	3,689	87%	-3.2%
Owner-Occupied	2,985	78.3%	2,895	78.5%	-3%
Renter-Occupied	826	21.7%	794	21.5%	-3.9%
Vacant Housing Units	428	10.1%	549	13%	28.3%
<b>Total Housing Units</b>	<b>4,239</b>	<b>100.0%</b>	<b>4,238</b>	<b>100.0%</b>	<b>0%</b>

Table II.60.39 shows housing units by tenure from 2010 to 2016. By 2016, there were 4,219 housing units. An estimated 78.7 percent were owner-occupied, and 12.8 percent were vacant.

<b>Table II.60.39</b>				
<b>Housing Units by Tenure</b>				
Lucas County				
2010 Census & 2016 Five-Year ACS Data				
Tenure	2010 Census		2016 Five-Year ACS	
	Units	% of Total	Units	% of Total
Occupied Housing Units	3,689	87%	3,678	87.2%
Owner-Occupied	2,895	78.5%	2,895	78.7%
Renter-Occupied	794	21.5%	783	21.3%
Vacant Housing Units	549	13%	541	12.8%
<b>Total Housing Units</b>	<b>4,238</b>	<b>100.0%</b>	<b>4,219</b>	<b>100.0%</b>



Households by household size are shown in Table II.60.40. There were a total of 3,689 households in 2010, up from 3,811 in 2000. One person households changed by 0 percent between 2000 and 2010, while two person households changed by -1.8 percent. Three and four person households changed by -4.4 and -16.4 respectively, representing 13.5 percent and 9.9 percent of the population in 2010.

<b>Table II.60.40</b>					
<b>Households by Household Size</b>					
Lucas County					
2000 & 2010 Census SF1 Data					
Size	2000 Census		2010 Census		% Change 00-10
	Households	% of Total	Households	% of Total	
One Person	1,093	28.7%	1,093	29.6%	0%
Two Persons	1,414	37.1%	1,388	37.6%	-1.8%
Three Persons	522	13.7%	499	13.5%	-4.4%
Four Persons	438	11.5%	366	9.9%	-16.4%
Five Persons	210	5.5%	206	5.6%	-1.9%
Six Persons	82	2.2%	79	2.1%	-3.7%
Seven Persons or More	52	1.4%	58	1.6%	11.5%
<b>Total</b>	<b>3,811</b>	<b>100.0%</b>	<b>3,689</b>	<b>100.0%</b>	<b>-3.2%</b>

Households by income is shown in Table II.60.41. Households earning more than \$100,000 per year represented 17 percent of households in 2016, compared to 2.8 percent in 2000. Households earning between \$50,000 and \$74,999 represented 22.9 percent of households in 2010, compared to 19.1 percent in 2000. Meanwhile, households earning less than \$15,000 accounted for 11.6 percent of households in 2016, compared to 24 percent in 2000.

<b>Table II.60.41</b>					
<b>Households by Income</b>					
Lucas County					
2000 Census SF3 & 2016 Five-Year ACS Data					
Income	2000 Census		2016 Five-Year ACS		
	Households	% of Total	Households	% of Total	
Less than \$15,000	908	24%	427	11.6%	
\$15,000 to \$19,999	284	7.5%	220	6%	
\$20,000 to \$24,999	305	8.1%	282	7.7%	
\$25,000 to \$34,999	626	16.6%	385	10.5%	
\$35,000 to \$49,999	663	17.6%	559	15.2%	
\$50,000 to \$74,999	723	19.1%	844	22.9%	
\$75,000 to \$99,999	161	4.3%	336	9.1%	
\$100,000 or More	106	2.8%	625	17%	
<b>Total</b>	<b>3,776</b>	<b>100.0%</b>	<b>3,678</b>	<b>100.0%</b>	





Table II.60.42, shows households by year home built. Housing units built between 2000 and 2009, and 2010 or later, account for 12.5 percent and 1.5 percent of households, respectively. Households built in the 1970's, 1980's, and 1990's account for 17.3 percent, 6.5 percent, and 6.2, respectively. Housing units built prior to 1939 represented 31.8 percent of households in 2016.

<b>Table II.60.42</b>				
<b>Households by Year Home Built</b>				
Lucas County				
2000 Census SF3 & 2016 Five-Year ACS Data				
Year Built	2000 Census		2016 Five-Year ACS	
	Households	% of Total	Households	% of Total
1939 or Earlier	1,588	41.7%	1,170	31.8%
1940 to 1949	291	7.6%	214	5.8%
1950 to 1959	260	6.8%	298	8.1%
1960 to 1969	357	9.4%	379	10.3%
1970 to 1979	698	18.3%	637	17.3%
1980 to 1989	290	7.6%	238	6.5%
1990 to 1999	327	8.6%	229	6.2%
2000 to 2009	.	.	458	12.5%
2010 or Later	.	.	55	1.5%
<b>Total</b>	<b>3,811</b>	<b>100.0%</b>	<b>3,678</b>	<b>100.0%</b>

The distribution of unit types by race are shown in Table II.60.43. An estimated 86.8 percent of white households occupy single family homes. Some 7.2 percent of white households occupied apartment. An estimated 100 percent of American Indian households occupy single family homes.

<b>Table II.60.43</b>							
<b>Distribution of Units in Structure by Race</b>							
Lucas County							
2016 Five-Year ACS Data							
Unit Type	White	Black	American Indian	Asian	Native Hawaiian/Pacific Islanders	Other	Two or More Races
Single-Family	86.8%	0%	100%	0%	0%	0%	61.2%
Duplex	0.4%	0%	0%	0%	0%	0%	0%
Tri- or Four-Plex	0.9%	0%	0%	0%	0%	0%	0%
Apartment	7.2%	0%	0%	0%	0%	0%	38.8%
Mobile Home	4.7%	0%	0%	0%	0%	0%	0%
Boat, RV, Van, Etc.	0%	0%	0%	0%	0%	0%	0%
<b>Total</b>	<b>100.0%</b>	<b>100.0%</b>	<b>100.0%</b>	<b>100.0%</b>	<b>100.0%</b>	<b>100.0%</b>	<b>100.0%</b>

The disposition of vacant housing units in 2000 and 2010 are shown in Table II.60.44. An estimated 20.2 percent of vacant units were for rent in 2010, a 52.1 percent change since 2000. In addition, some 14.8 percent of vacant units were for sale, a change of 12.5 percent between 2000 and 2010. "Other" vacant units represented 33.2 percent of vacant units in 2010. This is a change of 2.8 percent since 2000. "Other" vacant units are not for sale or rent, or otherwise available to the marketplace. These units may be problematic if concentrated in certain areas, and may create a "blighting" effect.

<b>Table II.60.44</b>					
<b>Disposition of Vacant Housing Units</b>					
Lucas County					
2000 & 2010 Census SF1 Data					
Disposition	2000 Census		2010 Census		% Change 00–10
	Units	% of Total	Units	% of Total	
For Rent	73	17.1%	111	20.2%	52.1%
For Sale	72	16.8%	81	14.8%	12.5%
Rented or Sold, Not Occupied	57	13.3%	100	18.2%	75.4%
For Seasonal, Recreational, or Occasional Use	49	11.4%	75	13.7%	53.1%
For Migrant Workers	0	0%	0	0%	0%
Other Vacant	177	41.4%	182	33.2%	2.8%
<b>Total</b>	<b>428</b>	<b>100.0%</b>	<b>549</b>	<b>100.0%</b>	<b>28.3%</b>

The disposition of vacant units between 2010 and 2016 are shown in Table II.60.45. By 2016, for rent units accounted for 0 percent of vacant units, while for sale units accounted for 7 percent. “Other” vacant units accounted for 55.8 percent of vacant units, representing a total of 302 “other” vacant units.

<b>Table II.60.45</b>				
<b>Disposition of Vacant Housing Units</b>				
Lucas County				
2010 Census & 2016 Five-Year ACS Data				
Disposition	2010 Census		2016 Five-Year ACS	
	Units	% of Total	Units	% of Total
For Rent	111	20.2%	0	0%
For Sale	81	14.8%	38	7%
Rented Not Occupied	7	1.3%	0	0%
Sold Not Occupied	93	16.9%	19	3.5%
For Seasonal, Recreational, or Occasional Use	75	13.7%	182	33.6%
For Migrant Workers	0	0%	0	0%
Other Vacant	182	33.2%	302	55.8%
<b>Total</b>	<b>549</b>	<b>100.0%</b>	<b>541</b>	<b>100.0%</b>

### Housing Problems

Households are classified as having housing problems if they face overcrowding, incomplete plumbing or kitchen facilities, or cost burdens. Overcrowding is defined as having from 1.1 to 1.5 people per room per residence, with severe overcrowding defined as having more than 1.5 people per room. Households with overcrowding are shown in Table II.60.46. In 2016, an estimated 2.3 percent of households were overcrowded, and an additional 0 percent were severely overcrowded.

<b>Table II.60.46</b> <b>Overcrowding and Severe Overcrowding</b> Lucas County 2000 Census SF3 & 2016 Five-Year ACS Data							
Data Source	No Overcrowding		Overcrowding		Severe Overcrowding		Total
	Households	% of Total	Households	% of Total	Households	% of Total	
<b>Owner</b>							
2000 Census	2,927	98%	46	1.5%	13	0.4%	2,986
2016 Five-Year ACS	2,836	98%	58	2%	1	0%	2,895
<b>Renter</b>							
2000 Census	817	99%	8	1%	0	0%	825
2016 Five-Year ACS	757	96.7%	26	3.3%	0	0%	3,678
<b>Total</b>							
2000 Census	3,744	98.2%	54	1.4%	13	0.3%	3,811
2016 Five-Year ACS	3,593	97.7%	84	2.3%	1	0%	3,678

Incomplete plumbing and kitchen facilities are another indicator of potential housing problems. According to the Census Bureau, a housing unit is classified as lacking complete plumbing facilities when any of the following are not present: piped hot and cold water, a flush toilet, and a bathtub or shower. Likewise, a unit is categorized as deficient when any of the following are missing from the kitchen: a sink with piped hot and cold water, a range or cook top and oven, and a refrigerator.

There were a total of 35 households with incomplete plumbing facilities in 2016, representing 1 percent of households in Lucas County. This is compared to 1.2 percent of households lacking complete plumbing facilities in 2000.

<b>Table II.60.47</b> <b>Households with Incomplete Plumbing Facilities</b> Lucas County 2000 Census SF3 & 2016 Five-Year ACS Data		
Households	2000 Census	2016 Five-Year ACS
With Complete Plumbing Facilities	3,764	3,643
Lacking Complete Plumbing Facilities	47	35
<b>Total Households</b>	<b>3,811</b>	<b>3,678</b>
<b>Percent Lacking</b>	<b>1.2%</b>	<b>1%</b>

There were 76 households lacking complete kitchen facilities in 2016, compared to 54 households in 2000. This was a change from 1.4 percent of households in 2000 to 2.1 percent in 2016.

<b>Table II.60.48</b> <b>Households with Incomplete Kitchen Facilities</b> Lucas County 2000 Census SF3 & 2016 Five-Year ACS Data		
Households	2000 Census	2016 Five-Year ACS
With Complete Kitchen Facilities	3,757	3,602
Lacking Complete Kitchen Facilities	54	76
<b>Total Households</b>	<b>3,811</b>	<b>3,678</b>
<b>Percent Lacking</b>	<b>1.4%</b>	<b>2.1%</b>

Cost burden is defined as gross housing costs that range from 30.0 to 50.0 percent of gross household income; severe cost burden is defined as gross housing costs that exceed 50.0 percent of gross household income. For homeowners, gross housing costs include property taxes, insurance, energy payments, water and sewer service, and refuse collection. If the homeowner has a mortgage, the determination also includes principal and interest payments on the mortgage loan.

For renters, this figure represents monthly rent and selected electricity and natural gas energy charges.

In Lucas County, 12.6 of households had a cost burden and 8.3 percent had a severe cost burden. Some 13.2 percent of renters were cost burdened, and 14.6 percent were severely cost burdened. Owner-occupied households without a mortgage had a cost burden rate of 8.3 percent and a severe cost burden rate of 2.4 percent. Owner occupied households with a mortgage had a cost burden rate of 16 percent, and severe cost burden at 10 percent.

**Table II.60.49**  
**Cost Burden and Severe Cost Burden by Tenure**

Lucas County  
2000 Census & 2016 Five-Year ACS Data

Data Source	Less Than 30%		31%-50%		Above 50%		Not Computed		Total
	Households	% of Total	Households	% of Total	Households	% of Total	Households	% of Total	
<b>Owner With a Mortgage</b>									
2000 Census	865	83.7%	112	10.8%	57	5.5%	0	0%	1,034
2016 Five-Year ACS	1,173	74%	254	16%	159	10%	0	0%	1,586
<b>Owner Without a Mortgage</b>									
2000 Census	859	91.5%	38	4%	34	3.6%	8	0.9%	939
2016 Five-Year ACS	1,136	86.8%	108	8.3%	31	2.4%	34	2.6%	1,309
<b>Renter</b>									
2000 Census	450	60.4%	110	14.8%	100	13.4%	85	11.4%	745
2016 Five-Year ACS	418	53.4%	103	13.2%	114	14.6%	148	18.9%	783
<b>Total</b>									
2000 Census	2,174	80%	260	9.6%	191	7%	93	3.4%	2,718
2016 Five-Year ACS	2,727	74.1%	465	12.6%	304	8.3%	182	4.9%	3,678

**Housing Problems by Income**

Table II.60.50, at right, shows the HUD calculated Median Family Income (MFI) for a family of four for Lucas County. As can be seen in 2017 the MFI was \$58,100, which compared to 69,900 for the State of Iowa.

Table II.60.51, shows Comprehensive Housing Affordability Strategy (CHAS) data for housing problems by tenure and income. As can be seen there are a total of 340 owner-occupied and 95 renter-occupied households with a cost burden of greater than 30 percent and less than 50 percent. An additional 220 owner-occupied 115 renter-occupied households had a cost burden greater than 50 percent of income. Overall there are 2,660 households without a housing problem.

**Table II.60.50**  
**Median Family Income**

Lucas County  
2000–2017 HUD MFI

Year	MFI	State of Iowa MFI
2000	35,200	49,100
2001	37,500	52,500
2002	37,700	53,700
2003	43,800	54,900
2004	46,600	55,800
2005	46,600	57,650
2006	46,400	57,800
2007	46,500	58,100
2008	46,700	58,500
2009	49,500	62,000
2010	49,800	62,400
2011	60,100	64,000
2012	61,000	64,800
2013	60,200	64,700
2014	59,600	65,300
2015	59,400	67,500
2016	57,000	68,400
2017	58,100	69,900

**Table II.60.51**  
**Housing Problems by Income and Tenure**

Lucas County  
2010–2014 HUD CHAS Data

Housing Problem	Less Than 30% MFI	30% - 50% MFI	50% - 80% MFI	80% - 100% MFI	Greater than 100% MFI	Total
<b>Owner-Occupied</b>						
Lacking complete plumbing or kitchen facilities	4	4	4	4	10	26
Severely Overcrowded with > 1.51 people per room (and complete kitchen and plumbing)	0	4	0	0	0	4
Overcrowded - With 1.01-1.5 people per room (and none of the above problems)	0	4	20	60	0	84
Housing cost burden greater than 50% of income (and none of the above problems)	80	45	60	15	20	220
Housing cost burden greater than 30% but less than 50% of income (and none of the above problems)	75	85	90	50	40	340
Zero/negative income (and none of the above problems)	55	0	0	0	0	55
has none of the 4 housing problems	45	215	410	255	1,290	2,215
<b>Total</b>	<b>259</b>	<b>357</b>	<b>584</b>	<b>384</b>	<b>1,360</b>	<b>2,944</b>
<b>Renter-Occupied</b>						
Lacking complete plumbing or kitchen facilities	10	55	0	0	25	90
Severely Overcrowded with > 1.51 people per room (and complete kitchen and plumbing)	0	0	0	0	0	0
Overcrowded - With 1.01-1.5 people per room (and none of the above problems)	0	0	0	25	0	25
Housing cost burden greater than 50% of income (and none of the above problems)	105	10	0	0	0	115
Housing cost burden greater than 30% but less than 50% of income (and none of the above problems)	25	30	40	0	0	95
Zero/negative income (and none of the above problems)	35	0	0	0	0	35
has none of the 4 housing problems	85	95	95	40	130	445
<b>Total</b>	<b>260</b>	<b>190</b>	<b>135</b>	<b>65</b>	<b>155</b>	<b>805</b>
<b>Total</b>						
Lacking complete plumbing or kitchen facilities	14	59	4	4	35	116
Severely Overcrowded with > 1.51 people per room (and complete kitchen and plumbing)	0	4	0	0	0	4
Overcrowded - With 1.01-1.5 people per room (and none of the above problems)	0	4	20	85	0	109
Housing cost burden greater than 50% of income (and none of the above problems)	185	55	60	15	20	335
Housing cost burden greater than 30% but less than 50% of income (and none of the above problems)	100	115	130	50	40	435
Zero/negative income (and none of the above problems)	90	0	0	0	0	90
has none of the 4 housing problems	130	310	505	295	1,420	2,660
<b>Total</b>	<b>519</b>	<b>547</b>	<b>719</b>	<b>449</b>	<b>1,515</b>	<b>3,749</b>

### Home Mortgage Loans

The FFEIC The Home Mortgage Disclosure Act (HMDA) was enacted by Congress in 1975. Data collected under the HMDA provide a comprehensive portrait of home loan activity, including information pertaining to home purchase loans, home improvement loans, and refinancing. For the analysis below only owner-occupied originated loans for single family units were considered. As can be seen in Table II.60.52, of the 144 loans in 2016, 65 loans were for Home Purchases, 16 were for Home Improvement and 63 were for refinancing.

<b>Table II.60.52</b> <b>Owner-Occupied Single Family Home Loans by Loan Type</b> Lucas County 2008 – 2016 HMDA Data				
Year	Home Purchase	Home Improvement	Refinancing	Total
2008	41	27	100	168
2009	59	31	128	218
2010	42	22	96	160
2011	36	26	127	189
2012	42	32	120	194
2013	43	17	110	170
2014	62	24	56	142
2015	53	21	59	133
2016	65	16	63	144

Table II.60.53, shows the average loan value by loan type. In 2008, average home purchase loans was \$74,333 in 2012 and \$91,338 in 2016. Overall, average loans were \$81,667 in 2008 and \$94,472 in 2016.

<b>Table II.60.53</b> <b>Owner-Occupied Single Family Home Loans by Average Loan Amount</b> Lucas County 2008 – 2016 HMDA Data				
Year	Home Purchase	Home Improvement	Refinancing	Total
2008	\$80,732	\$30,370	\$95,900	\$81,667
2009	\$77,169	\$22,613	\$104,617	\$85,528
2010	\$80,476	\$21,636	\$89,740	\$77,944
2011	\$83,944	\$30,846	\$95,449	\$84,370
2012	\$74,333	\$43,031	\$106,475	\$89,052
2013	\$75,209	\$27,235	\$87,727	\$78,512
2014	\$90,097	\$31,333	\$95,964	\$82,479
2015	\$90,642	\$28,762	\$101,661	\$85,759
2016	\$91,338	\$45,750	\$110,079	\$94,472

Table II.60.54, shows the total volume of owner-occupied single family loans. In 2008, average home purchase loans was \$3,122,000 in 2012 and \$5,937,000 in 2016. Overall, average loans were \$13,720,000 in 2008 and \$13,604,000 in 2016.

<b>Table II.60.54</b>				
<b>Total Volume of Owner-Occupied Single Family Loans</b>				
Lucas County				
2008 – 2016 HMDA Data				
<b>Year</b>	<b>Home Purchase</b>	<b>Home Improvement</b>	<b>Refinancing</b>	<b>Total</b>
2008	\$3,310,000	\$820,000	\$9,590,000	\$13,720,000
2009	\$4,553,000	\$701,000	\$13,391,000	\$18,645,000
2010	\$3,380,000	\$476,000	\$8,615,000	\$12,471,000
2011	\$3,022,000	\$802,000	\$12,122,000	\$15,946,000
2012	\$3,122,000	\$1,377,000	\$12,777,000	\$17,276,000
2013	\$3,234,000	\$463,000	\$9,650,000	\$13,347,000
2014	\$5,586,000	\$752,000	\$5,374,000	\$11,712,000
2015	\$4,804,000	\$604,000	\$5,998,000	\$11,406,000
2016	\$5,937,000	\$732,000	\$6,935,000	\$13,604,000

### Survey of Rental Properties

From September through December of 2017, a telephone survey was conducted with landlords and rental property managers throughout Iowa. Table II.60.55 presents some basic statistics about the completed surveys.

<b>Table II.60.55</b>				
<b>Survey of Rental Properties</b>				
Lucas County				
2017 Survey of Rental Properties				
<b>Year</b>	<b>Completed Surveys</b>	<b>Total Units</b>	<b>Vacancy Rate</b>	<b>Absorption Rate</b>
2017	1	58	6.9	30

Table II.60.56, shows the amount of total and vacant units with their associated vacancy rates. There were 58 apartment units reported in the survey, with 4 of them available, which resulted in a vacancy rate of 6.9 percent. This compares to a statewide vacancy rate of 6.7 percent for apartment units across the state.

<b>Table II.60.56</b>			
<b>Rental Vacancy Survey by Type</b>			
Lucas County			
2017 Survey of Rental Properties			
<b>Unit Type</b>	<b>Total Units</b>	<b>Vacant Units</b>	<b>Vacancy Rate</b>
Single Family	0	0	0%
Apartments	58	4	6.9%
Mobile Homes	0	0	0%
“Other” Units	0	0	0%
Don't Know	0	0	0%
<b>Total</b>	<b>58</b>	<b>4</b>	<b>6.9%</b>

Table II.60.57, reports units by bedroom size.

<b>Table II.60.57</b> <b>Rental Units by Bedroom Size</b> Lucas County 2017 Survey of Rental Properties						
Number of Bedrooms	Single Family Units	Apartment Units	Mobile Homes	“Other” Units	Don’t Know	Total
Efficiency	0	0	0	0	·	0
One	0	58	0	0	·	58
Two	0	0	0	0	·	0
Three	0	0	0	0	·	0
Four	0	0	0	0	·	0
Don’t Know	0	0	0	0	0	0
<b>Total</b>	<b>0</b>	<b>58</b>	<b>0</b>	<b>0</b>	<b>0</b>	<b>58</b>

Table II.60.58 displays the vacancy rate of apartment units by the number of bedrooms. The most common apartment units were one-bedroom units, which had a vacancy rate of 6.9 percent.

<b>Table II.60.58</b> <b>Apartment Units by Bedroom Size</b> Lucas County 2017 Survey of Rental Properties			
Number of Bedrooms	Units	Available Units	Vacancy Rates
Efficiency	0	0	0%
One	58	4	6.9%
Two	0	0	0%
Three	0	0	0%
Four	0	0	0%
Don’t know	0	0	0%
<b>Total</b>	<b>58</b>	<b>4</b>	<b>6.9%</b>

Average market-rate rents by unit type are shown in Table II.60.59. Not all respondents were able to disclose the rental amounts for their units, so there may be some statistical aberrations in the computed rental rates, but generally those units with more bedrooms had higher rents.

<b>Table II.60.59</b> <b>Average Market Rate Rents by Bedroom Size</b> Lucas County 2017 Survey of Rental Properties					
Number of Bedrooms	Single Family Units	Apartment Units	Mobile Homes	“Other” Units	Total
Efficiency	\$0	\$0	\$0	\$0	\$0
One	\$0	\$717	\$0	\$0	\$717
Two	\$0	\$0	\$0	\$0	\$0
Three	\$0	\$0	\$0	\$0	\$0
Four	\$0	\$0	\$0	\$0	\$0
<b>Total</b>	<b>\$0</b>	<b>\$717</b>	<b>\$0</b>	<b>\$0</b>	<b>\$717</b>



The average rent and availability of apartment units is displayed in Table II.60.60. The most common rent for apartment rents was between 500 and 750 dollars and the units in this price range had a vacancy rate of 6.9 percent.

<b>Table II.60.60</b> <b>Apartment Market Rate Rents by Vacancy Status</b> Lucas County 2017 Survey of Rental Properties			
Average Rents	Apartment Units	Available Apartment Units	Vacancy Rate
Less Than \$500	0	0	0%
\$500 to \$750	58	4	6.9%
\$750 to \$1,000	0	0	0%
\$1,000 to \$1,250	0	0	0%
\$1,250 to \$1,500	0	0	0%
Above \$1,500	0	0	0%
Missing	0	0	0%
<b>Total</b>	<b>58</b>	<b>4</b>	<b>6.9%</b>

Respondents were asked if utilities are included in the rent and as shown in Table II.60.61 below 1 respondents, or 100 percent, included some sort of utility in the rent.

<b>Table II.60.61</b> <b>Are there any utilities included with the rent?</b> Lucas County 2017 Survey of Rental Properties	
Period	Respondent
Yes	1
No	0
<b>% Offering Utilities</b>	<b>100%</b>

The type of utility included in the rent is shown in Table II.60.62. There were 1 respondent who included electricity, 0 respondents who included natural gas, 1 respondent who included water and sewer and 1 respondent included trash collection in the rent.

<b>Table II.60.62</b> <b>Which utilities are included with the rent?</b> Lucas County 2017 Survey of Rental Properties	
Type of Utility Provided	Respondent
Electricity	1
Natural Gas	0
Water/Sewer	1
Trash Collection	1

### Accessible Rental Properties

Table II.60.63, shows the breakdown of accessible and not accessible apartment units by bedroom size. Overall, 6.9 percent of all apartment units were considered accessible by survey respondents.

<b>Table II.60.63</b> <b>Apartment Units by Accessibility and Bedroom Size</b> Lucas County 2017 Survey of Rental Properties				
Number of Bedrooms	Not Accessible	Accessible Units	Apartment Units	Percentage Accessible
Studio	0	0	0	0%
One	54	4	58	6.9%
Two	0	0	0	0%
Three	0	0	0	0%
Four	0	0	0	0%
Don't know	0	0	0	0%
<b>Total</b>	<b>54</b>	<b>4</b>	<b>58</b>	<b>6.9%</b>

### Perceived Need for Rental Units

Table II.60.64, at right, shows the number of survey respondents who keep a waiting list. As can be seen 1 respondent said they keep a waitlist, with an estimated 0 number of persons on the wait list.

<b>Table II.60.64</b> <b>Do you keep a waiting list?</b> Lucas County 2017 Survey of Rental Properties	
Period	Respondent
Yes	1
No	0
<b>Waitlist Size</b>	<b>0</b>

Respondents were also asked how they would rate the need for renovating existing units. As shown in Table II.60.65, 1 respondent said there was no need for renovating single family units, with 0 respondents saying there was extreme need for renovating single family units. Likewise, 1 respondent indicated no need for renovating existing apartment units, with 0 respondents saying there was extreme need for renovating existing apartment units.

<b>Table II.60.65</b> <b>How would you rate the need for renovation of existing units in the city?</b> Lucas County 2017 Survey of Rental Properties				
Need	Single Family	Apartments	Mobile Homes	Other Units
No Need	1	1	1	1
Low Need	0	0	0	0
Moderate Need	0	0	0	0
High Need	0	0	0	0
Extreme Need	0	0	0	0
<b>Average Need</b>	<b>1</b>	<b>1</b>	<b>1</b>	<b>1</b>

Respondents were also asked how they would rate the need for the constructing new units. As shown in Table II.60.66, 0 respondents said there was no need for new single family units, with 0 respondents saying there was extreme need for constructing new single family units. Likewise, 0 respondents indicated no need for new apartment units, with 0 respondents saying there was extreme need for constructing new apartment units.

<b>Table II.60.66</b>				
<b>How would you rate the need for construction of new units in the city?</b>				
Lucas County				
2017 Survey of Rental Properties				
<b>Need</b>	<b>Single Family</b>	<b>Apartments</b>	<b>Mobile Homes</b>	<b>Other Units</b>
No Need	0	0	0	0
Low Need	0	0	0	0
Moderate Need	1	1	1	1
High Need	0	0	0	0
Extreme Need	0	0	0	0
<b>Average Need</b>	<b>3</b>	<b>3</b>	<b>3</b>	<b>3</b>

The 2017 Housing Needs Forecast reports housing demand projections from 2017 to 2050. Three possible economic futures portraying moderate, strong, and very strong growth were used to create three forecasts. The strong scenario is the base case, representing conditions as of today. The *moderate growth* scenario forecast projects household growth with the assumption of slower population and employment growth, where the *very strong growth* scenario incorporates assumptions of much stronger employment and population growth over the forecast horizon.

The primary objective of offering three alternative forecasts is to enhance planning capacity and to provide additional tools in order to assist state and local governments in their ongoing housing needs assessment, thereby facilitating informed discussion about housing demand at the local community level. These forecasts prove useful when interpreting the need for new or rehabilitated housing and whether single-family or rental housing activities might be best undertaken.

All three forecasts span the period of 2016 through 2050 and offer predictions of the demand for housing. However, only the strong growth scenario is reported here. The moderate and very strong scenarios are reported in the appendix.

This report uses the modified population projections based on projections released from Woods & Poole Economic, Inc (W&P).

Income categories were calculated using the Housing and Urban Development CHAS (Comprehensive Housing Affordability Strategy) data and are expressed as a percentage of area Median Family Income (MFI). This distribution is assumed to remain constant over the forecast horizon. Homeownership rates were forecasted based on historical trends.

Table II.60.67, shows the *strong growth scenario* for the Lucas County. As can be seen there were 2,895 owner-occupied and 783 renter-occupied households in 2016, for a total of 3,678 households. In 2030, there will be a projected 3,819 households, of which 2,999 are projected to be owner occupied and the remaining 820 are expected to be renter-occupied.



By 2050, there are projected to be 2,939 owner-occupied households, of which 255 owner-occupied households are expected to have incomes of 0-30 percent of MFI and 581 are projected to have incomes of 50.1-80.0 percent of MFI. In 2050, there are projected to be 780 renter households, of which 254 renter households are expected to have incomes between 0 and 30.0 percent of median family income 134 renter households with incomes between 50.1-80.0 percent of MFI. Overall households are projected to reach 3,720 occupied units by 2050, of which 509 are expected to have incomes on between 0 and 30 percent of MFI.

<b>Table II.60.67 Housing Demand Forecast</b>								
Lucas County Strong Growth Scenario								
<b>Income (% of MFI)</b>	<b>2016</b>	<b>2020</b>	<b>2025</b>	<b>2030</b>	<b>2035</b>	<b>2040</b>	<b>2045</b>	<b>2050</b>
<b>Owner</b>								
0-30%	251	256	258	260	260	259	257	255
30.1-50%	355	363	366	368	368	367	364	361
50.1-80%	572	585	590	593	593	591	587	581
80.1-95%	267	272	275	276	276	275	273	271
95.1-115%	354	362	365	367	367	366	363	360
115+%	1,096	1,120	1,129	1,135	1,135	1,131	1,123	1,112
<b>Total</b>	<b>2,895</b>	<b>2,959</b>	<b>2,984</b>	<b>2,999</b>	<b>3,000</b>	<b>2,988</b>	<b>2,967</b>	<b>2,939</b>
<b>Renter</b>								
0-30%	255	270	269	267	265	262	259	254
30.1-50%	182	193	192	191	189	187	184	181
50.1-80%	135	143	142	141	140	139	137	134
80.1-95%	58	61	61	61	60	59	59	58
95.1-115%	23	24	24	24	24	24	23	23
115+%	130	138	137	136	135	134	132	130
<b>Total</b>	<b>783</b>	<b>828</b>	<b>825</b>	<b>820</b>	<b>813</b>	<b>804</b>	<b>793</b>	<b>780</b>
<b>Total</b>								
0-30%	506	526	527	527	525	521	516	509
30.1-50%	537	556	558	559	557	554	549	542
50.1-80%	707	728	732	734	733	729	723	716
80.1-95%	324	333	336	337	336	334	332	328
95.1-115%	377	387	390	391	391	389	387	383
115+%	1,226	1,257	1,266	1,271	1,270	1,264	1,254	1,242
<b>Total</b>	<b>3,678</b>	<b>3,787</b>	<b>3,808</b>	<b>3,819</b>	<b>3,813</b>	<b>3,792</b>	<b>3,760</b>	<b>3,720</b>

