

**VOLUME II:  
WAYNE COUNTY**

**IOWA STATE  
PROFILE**

**Please visit the Iowa State Profile Dashboard:**

**[www.westernes.com/Iowa](http://www.westernes.com/Iowa)**

**For and online version of this profile with many additional features including:**

- **Mapping**
- **Interactive Charts and Tables**
- **Data Downloads**
- **Interactive Long Read**
- **Interactive Tour**
- **Jurisdiction to Jurisdiction Comparison**
- **Download Additional Reports**
- **And More**



# Wayne County

## DEMOGRAPHICS

### Population Estimates

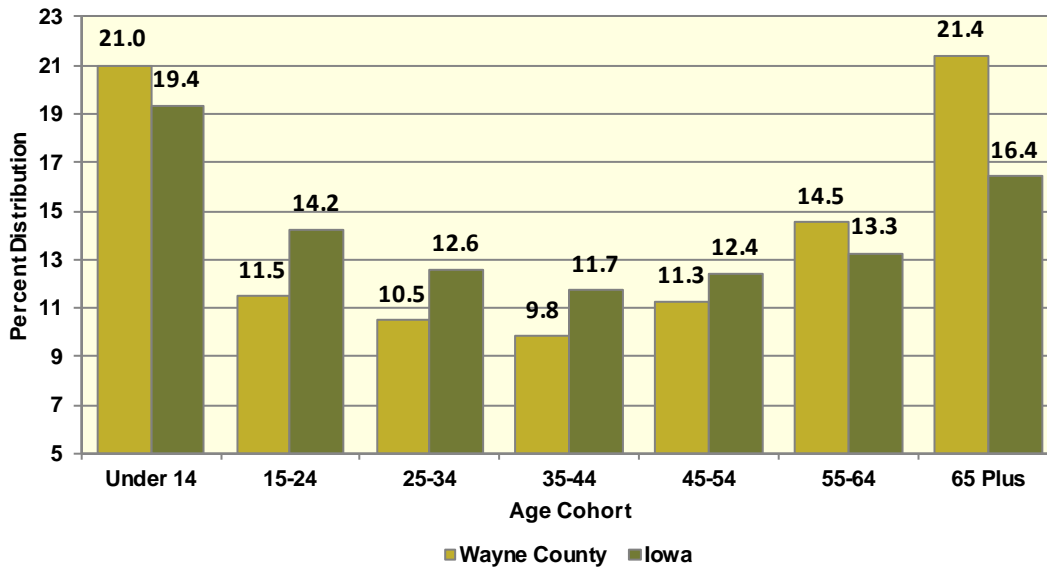
The Census Bureau’s current census estimates indicate that Wayne County’s population increased from 6,403 in 2010 to 6,452 in 2016, or by 0.8 percent. This compares to a statewide population change of 2.9 percent over the period. The number of people from 25 to 34 years of age increased by 12.3 percent, and the number of people from 55 to 64 years of age increased by 17.1 percent. The white population decreased by 0.2 percent, while the black population increased by 68.4 percent. The Hispanic population increased from 69 to 105 people between 2010 and 2016 or by 52.2 percent. These data are presented in Table II.94.1.

Table II.94.1 Profile of Population Characteristics Wayne County vs. State of Iowa 2010 Census and 2016 Current Census Estimates						
Subject	Wayne County			Iowa		
	2010 Census	Jul-16	% Change	2010 Census	Jul-16	% Change
<b>Population</b>	<b>6,403</b>	<b>6,452</b>	<b>0.8%</b>	<b>3,046,355</b>	<b>3,134,693</b>	<b>2.9%</b>
<b>Age</b>						
Under 14 years	1,225	1,356	10.7%	603,673	607,020	0.6%
15 to 24 years	730	741	1.5%	430,187	445,808	3.6%
25 to 34 years	603	677	12.3%	382,583	394,373	3.1%
35 to 44 years	623	633	1.6%	364,548	367,535	0.8%
45 to 54 years	1,004	726	-27.7%	439,726	389,744	-11.4%
55 to 64 years	800	937	17.1%	372,750	415,998	11.6%
65 and Over	1,418	1,382	-2.5%	452,888	514,215	13.5%
<b>Race</b>						
White	6,307	6,296	-0.2%	2,839,615	2,864,884	0.9%
Black	19	32	68.4%	91,695	114,874	25.3%
American Indian and Alaskan Native	13	16	23.1%	13,563	15,924	17.4%
Asian	18	34	88.9%	54,232	78,735	45.2%
Native Hawaiian or Pacific Islander	1	1	0%	2,419	3,592	48.5%
Two or more races	45	73	62.2%	44,831	56,684	26.4%
<b>Ethnicity (of any race)</b>						
Hispanic or Latino	69	105	52.2%	151,544	182,606	20.5%

Table II.94.2, presents the population of Wayne County by age and gender from the 2010 Census and 2016 current census estimates. The 2010 Census count showed a total of 3,118 males, who accounted for 48.7 percent of the population, and the remaining 51.3 percent, or 3,285 persons, were female. In 2016, the number of males rose to 3,157 persons, and accounted for 48.9 percent of the population, with the remaining 51.1 percent, or 3,295 persons being female.

Table II.94.2 Population by Age and Gender Wayne County 2010 Census and Current Census Estimates							
Age	2010 Census			2016 Current Census Estimates			% Change 10-16
	Male	Female	Total	Male	Female	Total	
Under 14 years	586	639	1,225	681	675	1,356	10.7%
15 to 24 years	379	351	730	358	383	741	1.5%
25 to 34 years	314	289	603	329	348	677	12.3%
35 to 44 years	323	300	623	330	303	633	1.6%
45 to 54 years	512	492	1,004	371	355	726	-27.7%
55 to 64 years	417	383	800	492	445	937	17.1%
65 and Over	587	831	1,418	596	786	1,382	-2.5%
<b>Total</b>	<b>3,118</b>	<b>3,285</b>	<b>6,403</b>	<b>3,157</b>	<b>3,295</b>	<b>6,452</b>	<b>0.8%</b>
<b>% of Total</b>	<b>48.7%</b>	<b>51.3%</b>	.	<b>48.9%</b>	<b>51.1%</b>	.	

**Diagram II.94.1**  
**Age Distribution**  
Wayne County  
2016 Census Population Estimates



According to data from the Census Bureau, between 1990 and 2000, the population in Wayne County decreased from 7,067 to 6,730 persons, or by -4.8 percent. Between 2000 and 2010, Wayne County population, changed by -327 persons, to a total population of 6,403 persons. The most recent estimates indicated that Wayne County’s population fell an additional 49 persons since the 2010 Census, to 6,452 persons in July 2016.

<b>Table II.94.3</b> <b>Population Estimates:</b> <b>Births, Deaths, and Migration</b> Wayne County 1990-2010 Census Data and Intercensal Estimates	
<b>1990 Census</b>	<b>7,067</b>
Natural Increase 90-00	-448
Net Migration 90-00	111
<b>2000 Census</b>	<b>6,730</b>
Natural Increase 00-09	-155
Net Migration 00-09	-182
<b>2009 Population Estimate</b>	<b>6,393</b>
<b>2010 Census</b>	<b>6,403</b>
Natural Increase 10-16	4
Net Migration 10-16	45
<b>2016 Population Estimate</b>	<b>6,452</b>

There are some important implications of these population growth estimates. Total population change is a combination of births, deaths, and the net migration of those arriving in and leaving the state. The result of births minus deaths is termed the *natural increase*. As shown in Table II.94.3, Wayne County had a natural increase, of -448 persons between 1990 and 2000. During the April 2000 to July 2009 period, Wayne County’s natural increase was estimated at -155 persons. Between 2010 and 2016, the natural increase was estimated at 4 persons, and the net migration was 45 persons.

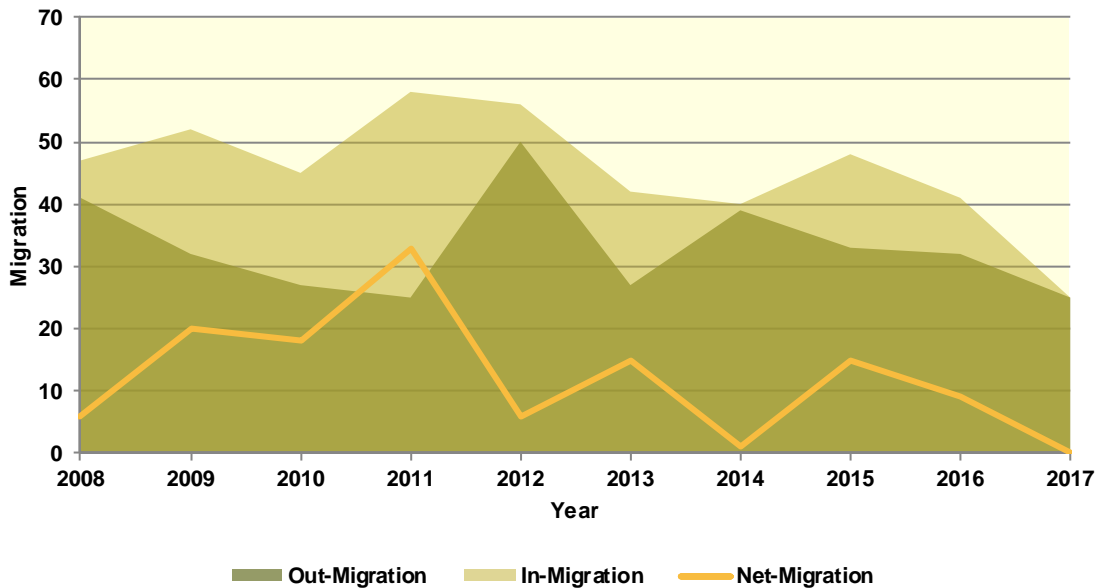
### Population Migration Trends

The Iowa Department of Transportation (IOWADOT) collects data on drivers who move to Iowa and exchange licenses from other states as well as those surrendering Iowa driver’s licenses when relocating to a different state. The IOWADOT data do not represent a precise count of migration, as they show only the net change in the number of driver’s licenses, but the data indicate the general direction of population movement.

As can be seen in Table II.94.4 in 2008 there was a total of 47 in-migrations with a total of 41 out-migrations, which led to a net-migration of 6 persons. The most recent first half 2017 data saw a net-migration of 0 persons, with 25 persons entering Wayne County and 25 persons leaving Wayne County.

Diagram II.94.2, shows in and out- migration as a shaded area, with net migration depicted as a line graph. As can be seen the maximum net migration occurred in 2011 with 33 people entering and the migration lowest net migration occurred in 2014 with 1 entering Wayne County.

**Diagram II.94.2**  
**Net In-migration by Gender**  
 Wayne County  
 Iowa DOT Data: 2008 – First Half 2017



The IOWADOT data also collects gender and age information. Table II.94.4, shows in- and out-migration by gender. In the most recent first half 2017 data, or -6 persons were male, with the remaining inf percent, or 6 persons were female.

Gender	2008	2009	2010	2011	2012	2013	2014	2015	2016	2017- First Half
<b>In</b>										
Male	20	28	22	34	29	20	18	22	23	8
Female	27	24	23	24	27	22	22	26	18	17
<b>Total</b>	<b>47</b>	<b>52</b>	<b>45</b>	<b>58</b>	<b>56</b>	<b>42</b>	<b>40</b>	<b>48</b>	<b>41</b>	<b>25</b>
<b>Out</b>										
Male	24	16	12	11	26	14	19	9	13	14
Female	17	16	15	14	24	13	20	24	19	11
<b>Total</b>	<b>41</b>	<b>32</b>	<b>27</b>	<b>25</b>	<b>50</b>	<b>27</b>	<b>39</b>	<b>33</b>	<b>32</b>	<b>25</b>
<b>Net</b>										
Male	-4	12	10	23	3	6	-1	13	10	-6
Female	10	8	8	10	3	9	2	2	-1	6
<b>Total</b>	<b>6</b>	<b>20</b>	<b>18</b>	<b>33</b>	<b>6</b>	<b>15</b>	<b>1</b>	<b>15</b>	<b>9</b>	<b>0</b>

Table II.94.5, shows net-migration for Wayne County by age range. The largest age cohort in the most recent 2017 net migration data was those in the age range of 46 to 55, with 2 persons entering Wayne County. Those in the age range of 56 to 65 had the lowest levels of net migration, with 2 persons leaving Wayne County.

<b>Table II.94.5</b>										
<b>Migration by Age Range</b>										
Wayne County										
Iowa DOT Data										
<b>Age Range</b>	<b>2008</b>	<b>2009</b>	<b>2010</b>	<b>2011</b>	<b>2012</b>	<b>2013</b>	<b>2014</b>	<b>2015</b>	<b>2016</b>	<b>2017 – First Half</b>
<b>In</b>										
14-17	0	1	2	2	1	0	0	0	0	0
18-22	7	9	6	0	9	4	7	5	5	3
23-25	5	1	2	4	9	3	5	4	5	4
26-35	6	9	9	16	8	10	5	14	6	6
36-45	13	6	10	12	12	13	2	8	7	3
46-55	7	16	7	8	9	6	7	9	10	4
56-65	8	5	3	8	4	3	10	4	6	2
66 +	1	5	6	8	4	3	4	4	2	3
<b>Total</b>	<b>47</b>	<b>52</b>	<b>45</b>	<b>58</b>	<b>56</b>	<b>42</b>	<b>40</b>	<b>48</b>	<b>41</b>	<b>25</b>
<b>Out</b>										
14-17	0	1	0	2	0	1	0	0	1	0
18-22	7	9	4	1	6	7	4	7	0	3
23-25	2	4	4	1	4	1	4	5	5	3
26-35	10	7	7	9	10	3	6	8	7	6
36-45	7	4	2	6	11	3	9	2	5	3
46-55	6	2	6	4	9	8	10	4	7	2
56-65	4	1	2	0	4	2	3	3	4	4
66 +	5	4	2	2	6	2	3	4	3	4
<b>Total</b>	<b>41</b>	<b>32</b>	<b>27</b>	<b>25</b>	<b>50</b>	<b>27</b>	<b>39</b>	<b>33</b>	<b>32</b>	<b>25</b>
<b>Net</b>										
14-17	0	0	2	0	1	-1	0	0	-1	0
18-22	0	0	2	-1	3	-3	3	-2	5	0
23-25	3	-3	-2	3	5	2	1	-1	0	1
26-35	-4	2	2	7	-2	7	-1	6	-1	0
36-45	6	2	8	6	1	10	-7	6	2	0
46-55	1	14	1	4	0	-2	-3	5	3	2
56-65	4	4	1	8	0	1	7	1	2	-2
66 +	-4	1	4	6	-2	1	1	0	-1	-1
<b>Total</b>	<b>6</b>	<b>20</b>	<b>18</b>	<b>33</b>	<b>6</b>	<b>15</b>	<b>1</b>	<b>15</b>	<b>9</b>	<b>0</b>

### School Age Enrollment

Table II.94.6, show the school enrollment from the Iowa Department of Education for Wayne County. The school enrollment figures are for both public and private schools. As can be seen, in 2010 total enrollment was 1,126 students and was 1,125 in 2017, a change of -0.1 percent. Enrollment for students in grades 1 to 5 was 385 students in 2010 and 402 in 2017, which was a change of 4.4 percent. Likewise, 2010 enrollment for students in grades 9 to 12 was 379 and 312 in 2017, which was a change of -17.7 percent.

**Table II.94.6**  
**School Enrollment**

Wayne County  
Iowa Department of Education

Year	Pre-K/K	Grades 1 - 5	Grades 6 - 8	Grades 9 - 12	Special Ed.	Total
2000	72	411	283	369	2	1,137
2001	96	393	284	426	0	1,199
2002	81	368	261	388	0	1,098
2003	77	382	276	380	0	1,115
2004	89	345	253	364	0	1,051
2005	123	395	301	425	27	1,244
2006	110	407	308	449	7	1,274
2007	132	374	272	446	37	1,224
2008	139	385	254	412	50	1,190
2009	147	385	244	418	46	1,194
2010	151	385	211	379	53	1,126
2011	151	394	211	335	67	1,091
2012	151	375	220	305	69	1,051
2013	168	386	232	274	68	1,060
2014	170	394	234	278	75	1,076
2015	165	391	223	274	70	1,053
2016	171	422	246	282	78	1,121
2017	165	402	246	312	67	1,125
<b>% Change 10-17</b>	<b>9.3%</b>	<b>4.4%</b>	<b>16.6%</b>	<b>-17.7%</b>	<b>26.4%</b>	<b>-0.1%</b>

### Census Demographic Data

In the 1980, 1990, and 2000 decennial censuses, the Census Bureau released several tabulations in addition to the full SF1 100 percent count data including the one-in-six SF3 sample. These additional samples, such as the SF3, asked supplementary questions regarding income and household attributes that were not asked in the 100 percent count. In the 2010 decennial census, the Census Bureau did not collect additional sample data, such as the SF3, and thus many important housing and income concepts are not available in the 2010 Census.

To study these important concepts the Census Bureau distributes the American Community Survey every year to a sample of the population and quantifies the results as one-, three- and five-year averages. The one-year sample only includes responses from the year the survey was implemented, while the five-year sample includes responses over a five-year period. Since the five-year estimates include more responses, the estimates can be tabulated down to the Census tract level, and considered more robust than the one or three year sample estimates.

### Population Estimates

Table II.94.7, shows population by age for the 2000 and 2010 Census. The population changed by -4.9 percent overall between 2000 and 2010. Various age cohorts changed at different rates. The elderly population, or persons aged 65 or older, changed by -11.4 percent to a total of 1,418 persons in 2010. Those aged 25 to 34 changed by 0.8 percent, and those aged under 5 changed by 18 percent.





<b>Table II.94.7</b> <b>Population by Age</b> Wayne County 2000 & 2010 Census SF1 Data					
Age	2000 Census		2010 Census		% Change 00-10
	Population	% of Total	Population	% of Total	
Under 5	338	5%	399	6.2%	18%
5 to 19	1,410	21%	1,267	19.8%	-10.1%
20 to 24	258	3.8%	289	4.5%	12%
25 to 34	598	8.9%	603	9.4%	0.8%
35 to 54	1,790	26.6%	1,627	25.4%	-9.1%
55 to 64	735	10.9%	800	12.5%	8.8%
65 or Older	1,601	23.8%	1,418	22.1%	-11.4%
<b>Total</b>	<b>6,730</b>	<b>100.0%</b>	<b>6,403</b>	<b>100.0%</b>	<b>-4.9%</b>

The elderly population is further explored in Table II.94.8. Those aged 65 to 66 changed by 2.1 percent between 2000 and 2010, resulting in a population of 147 persons. Those aged 85 or older changed by -0.7 percent during the same time period, and resulted in 269 persons over age 85 in 2010.

<b>Table II.94.8</b> <b>Elderly Population by Age</b> Wayne County 2000 & 2010 Census SF1 Data					
Age	2000 Census		2010 Census		% Change 00-10
	Population	% of Total	Population	% of Total	
65 to 66	144	9%	147	10.4%	2.1%
67 to 69	209	13.1%	223	15.7%	6.7%
70 to 74	359	22.4%	290	20.5%	-19.2%
75 to 79	351	21.9%	267	18.8%	-23.9%
80 to 84	267	16.7%	222	15.7%	-16.9%
85 or Older	271	16.9%	269	19%	-0.7%
<b>Total</b>	<b>1,601</b>	<b>100.0%</b>	<b>1,418</b>	<b>100.0%</b>	<b>-11.4%</b>

Population by race and ethnicity is shown in Table II.94.9. The white population changed by -5.6 percent between 2000 and 2010, and resulted in representing 98 percent of the population in 2010. The black population changed by 350 percent, represented 0.3 percent of the population in 2010. The American Indian and Asian populations represented 0.2 and 0.3 percent, respectively, in 2010. As for ethnicity, the Hispanic population changed by 43.8 percent between 2000 and 2010, compared to the -5.2 percent growth rate for non-Hispanics.

<b>Table II.94.9</b>					
<b>Population by Race and Ethnicity</b>					
Wayne County					
2000 & 2010 Census SF1 Data					
Race	2000 Census		2010 Census		% Change 00-10
	Population	% of Total	Population	% of Total	
White	6,648	98.8%	6,275	98%	-5.6%
Black	4	0.1%	18	0.3%	350%
American Indian	8	0.1%	12	0.2%	50%
Asian	10	0.1%	18	0.3%	80%
Native Hawaiian/ Pacific Islander	4	0.1%	1	0%	-75%
Other	13	0.2%	31	0.5%	138.5%
Two or More Races	43	0.6%	48	0.7%	11.6%
<b>Total</b>	<b>6,730</b>	<b>100.0%</b>	<b>6,403</b>	<b>100.0%</b>	<b>-4.9%</b>
<b>Hispanic</b>	48	0.7%	69	1.1%	43.8%
<b>Non-Hispanic</b>	6,682	99.3%	6,334	98.9%	-5.2%

Population by race and ethnicity through 2016 is shown in Table II.94.10. The white population represented 97.8 percent of the population in 2016, compared with black households accounting for 0.6 percent of the population. Hispanic households represented 1.2 percent of the population in 2016.

<b>Table II.94.10</b>				
<b>Population by Race and Ethnicity</b>				
Wayne County				
2010 Census & 2016 Five-Year ACS				
Race	2010 Census		2016 Five-Year ACS	
	Population	% of Total	Population	% of Total
White	6,275	98%	6,264	97.8%
Black	18	0.3%	41	0.6%
American Indian	12	0.2%	21	0.3%
Asian	18	0.3%	4	0.1%
Native Hawaiian/ Pacific Islander	1	0%	0	0%
Other	31	0.5%	0	0%
Two or More Races	48	0.7%	73	1.1%
<b>Total</b>	<b>6,403</b>	<b>100.0%</b>	<b>6,403</b>	<b>100.0%</b>
<b>Non-Hispanic</b>	6,334	98.9%	6,326	98.8%
<b>Hispanic</b>	69	1.1%	77	1.2%

The population by race is broken down further by ethnicity in Table II.94.11. While the white non-Hispanic population changed by -5.6 percent between 2000 and 2010, the white Hispanic population changed by -8.8 percent. The black non-Hispanic population changed by 325 percent.

<b>Table II.94.11</b>					
<b>Population by Race and Ethnicity</b>					
Wayne County					
2000 & 2010 Census Data					
Race	2000		2010 Census		% Change 00 - 10
	Population	% of Total	Population	% of Total	
<b>Non-Hispanic</b>					
White	6,614	99%	6,244	98.6%	-5.6%
Black	4	0.1%	17	0.3%	325%
American Indian	6	0.1%	12	0.2%	100%
Asian	10	0.1%	15	0.2%	50%
Native Hawaiian/ Pacific Islander	4	0.1%	1	0%	-75%
Other	7	0.1%	0	0%	-100%
Two or More Races	37	0.6%	45	0.7%	21.6%
<b>Total Non-Hispanic</b>	<b>6,682</b>	<b>100.0%</b>	<b>6,334</b>	<b>100.0%</b>	<b>-5.2%</b>
<b>Hispanic</b>					
White	34	70.8%	31	44.9%	-8.8%
Black	0	0%	1	1.4%	
American Indian	2	4.2%	0	0%	-100%
Asian	0	0%	3	4.3%	
Native Hawaiian/ Pacific Islander	0	0%	0	0%	0%
Other	6	12.5%	31	44.9%	416.7%
Two or More Races	6	12.5%	3	4.3%	-50%
<b>Total Hispanic</b>	<b>48</b>	<b>100.0%</b>	<b>69</b>	<b>100.0%</b>	<b>43.8 %</b>
<b>Total Population</b>	<b>6,730</b>	<b>100.0%</b>	<b>6,403</b>	<b>100.0%</b>	<b>-4.9%</b>

The change in race and ethnicity between 2010 and 2016 is shown in Table II.94.12. During this time, the total non-Hispanic population was 6,326 persons in 2016. The Hispanic population was 77.

<b>Table II.94.12</b>				
<b>Population by Race and Ethnicity</b>				
Wayne County				
2010 Census & 2016 Five-Year ACS				
Race	2010 Census		2016 Five-Year ACS	
	Population	% of Total	Population	% of Total
<b>Non-Hispanic</b>				
White	6,244	98.6%	6,187	97.8%
Black	17	0.3%	41	0.6%
American Indian	12	0.2%	21	0.3%
Asian	15	0.2%	4	0.1%
Native Hawaiian/ Pacific Islander	1	0%	0	0%
Other	0	0%	0	0%
Two or More Races	45	0.7%	73	1.2%
<b>Total Non-Hispanic</b>	<b>6,334</b>	<b>100.0%</b>	<b>6,326</b>	<b>100.0%</b>
<b>Hispanic</b>				
White	31	44.9%	77	100%
Black	1	1.4%	0	0%
American Indian	0	0%	0	0%
Asian	3	4.3%	0	0%
Native Hawaiian/ Pacific Islander	0	0%	0	0%
Other	31	44.9%	0	0%
Two or More Races	3	4.3%	0	0%
<b>Total Hispanic</b>	<b>69</b>	<b>100.0%</b>	<b>77</b>	<b>100.0%</b>
<b>Total Population</b>	<b>6,403</b>	<b>100.0%</b>	<b>6,403</b>	<b>100.0%</b>

Households by type and tenure are shown in Table II.94.13. Family households represented 63.3 percent of households, while non-family households accounted for 36.7 percent. These changed from 66 and 34 percent, respectively.

<b>Table II.94.13</b>				
<b>Household Type by Tenure</b>				
Wayne County				
2010 Census SF1 & 2016 Five-Year ACS Data				
Household Type	2010 Census		2016 Five-Year ACS	
	Households	Households	Households	% of Total
Family Households	1,750	66%	1,630	63.3%
Married-Couple Family	1,431	81.8%	1,306	80.1%
Owner-Occupied	1,268	88.6%	1,191	91.2%
Renter-Occupied	163	11.4%	115	8.8%
Other Family	319	18.2%	324	19.6%
Male Householder, No Spouse Present	110	34.5%	134	34%
Owner-Occupied	86	78.2%	121	90.3%
Renter-Occupied	24	21.8%	13	9.7%
Female Householder, No Spouse Present	209	65.5%	190	64.5%
Owner-Occupied	133	63.6%	105	55.3%
Renter-Occupied	76	36.4%	85	44.7%
Non-Family Households	902	34%	944	36.7%
Owner-Occupied	619	68.6%	627	66.4%
Renter-Occupied	283	31.4%	317	33.6%
<b>Total</b>	<b>2,652</b>	<b>100.0%</b>	<b>2,574</b>	<b>100.0%</b>

The group quarters population was 91 in 2010, compared to 132 in 2000. Institutionalized populations experienced a -38.3 percent change between 2000 and 2010. Non-institutionalized populations experienced a 200 percent change during this same time period.

<b>Table II.94.14</b>					
<b>Group Quarters Population</b>					
Wayne County					
2000 & 2010 Census SF1 Data					
Group Quarters Type	2000 Census		2010 Census		% Change 00-10
	Population	% of Total	Population	% of Total	
<b>Institutionalized</b>					
Correctional Institutions	6	4.7%	10	12.7%	66.7%
Juvenile Facilities	.	.	0	0%	.
Nursing Homes	121	94.5%	69	87.3%	-43%
Other Institutions	1	0.8%	0	0%	-100%
<b>Total</b>	<b>128</b>	<b>100.0%</b>	<b>79</b>	<b>100.0%</b>	<b>-38.3%</b>
<b>Noninstitutionalized</b>					
College Dormitories	0	0%	0	0%	0%
Military Quarters	0	0%	0	0%	0%
Other Noninstitutionalized	4	100%	12	100%	200%
<b>Total</b>	<b>4</b>	<b>100.0%</b>	<b>12</b>	<b>100.0%</b>	<b>200%</b>
<b>Group Quarters Population</b>	<b>132</b>	<b>100.0%</b>	<b>91</b>	<b>100.0%</b>	<b>-31.1%</b>

The number of foreign born persons are shown in Table II.94.15. An estimated 0.3 percent of the population was born in Germany, some 0.2 percent were born in Other Australian and New Zealand Subregion, and another 0.1 percent were born in Philippines.

**Table II.94.15**  
**Place of Birth for the Foreign-Born Population**  
 Wayne County  
 2016 Five-Year ACS

Number	County	Number of Person	Percent of Total Population
#1 country of origin	Germany	19	0.3%
#2 country of origin	Other Australian and New Zealand Subregion	12	0.2%
#3 country of origin	Philippines	4	0.1%
#4 country of origin	England	3	0%
#5 country of origin	Ethiopia	3	0%
#6 country of origin	Latvia	3	0%
#7 country of origin	Japan	2	0%
#8 country of origin	Afghanistan	0	0%
#9 country of origin	Africa n.e.c	0	0%
#10 country of origin	Albania	0	0%

Limited English Proficiency and the language spoken at home are shown in Table II.94.16. An estimated 3.6 percent of the population speaks German or other West Germanic languages at home, followed by 0.2 percent speaking Spanish.

**Table II.94.16**  
**Limited English Proficiency and Language Spoken at Home**  
 Wayne County  
 2016 Five-Year ACS

Number	County	Number of Person	Percent of Total Population
#1 LEP Language	German or other West Germanic languages	213	3.6%
#2 LEP Language	Spanish	10	0.2%
#3 LEP Language	Other Indo-European languages	5	0.1%
#4 LEP Language	Tagalog	4	0.1%
#5 LEP Language	Other and unspecified languages	3	0.1%
#6 LEP Language	French, Haitian, or Cajun	2	0%
#7 LEP Language	Arabic	0	0%
#8 LEP Language	Chinese	0	0%
#9 LEP Language	Korean	0	0%
#10 LEP Language	Other Asian and Pacific Island languages	0	0%

## Disability

The disability rate from the 2000 Census is shown in Table II.94.17. Some 21.7 percent of the population was disabled in 2000, or a total of 1,360 persons. The disability rate was highest for those over 65, with 41 percent disabled.

<b>Table II.94.17</b> <b>Disability by Age</b> Wayne County 2000 Census SF3 Data		
Age	Total	
	Disabled Population	Disability Rate
5 to 15	70	6.7%
16 to 64	685	18.3%
65 and older	605	41%
<b>Total</b>	<b>1,360</b>	<b>21.7%</b>

Table II.94.18 shows disability by type in 2000. There were 774 physical disabilities in 2000, some 387 employment disabilities, and 403 go-outside-home disabilities.

<b>Table II.94.18</b> <b>Total Disabilities Talled: Aged 5 and Older</b> Wayne County 2000 Census SF3 Data	
Disability Type	Population
Sensory disability	396
Physical disability	774
Mental disability	376
Self-care disability	215
Employment disability	387
Go-outside-home disability	403
<b>Total</b>	<b>2,551</b>

Disability by age, as estimated by the 2016 ACS, is shown in Table II.94.19. The disability rate for females was 16.4 percent, compared to 17.8 percent for males. The disability rate changed precipitously higher with age, with 56.6 percent of those over 75 experiencing a disability.

<b>Table II.94.19</b> <b>Disability by Age</b> Wayne County 2016 Five-Year ACS Data						
Age	Male		Female		Total	
	Disabled Population	Disability Rate	Disabled Population	Disability Rate	Disabled Population	Disability Rate
Under 5	0	0%	0	0%	0	0%
5 to 17	27	5.2%	18	3%	45	4.1%
18 to 34	55	10.1%	38	6.7%	93	8.3%
35 to 64	186	15.6%	145	13.3%	331	14.5%
65 to 74	104	33%	118	32.2%	222	32.6%
75 or Older	171	65.3%	213	51.2%	384	56.6%
<b>Total</b>	<b>543</b>	<b>17.8%</b>	<b>532</b>	<b>16.4%</b>	<b>1,075</b>	<b>17.1%</b>

The number of disabilities by type, as estimated by the 2016 ACS, is shown in Table II.94.20. Some 10.2 percent have an ambulatory disability, 6.9 have an independent living disability, and 3.7 percent have a self-care disability.

<b>Table II.94.20</b>		
<b>Total Disabilities Tallied: Aged 5 and Older</b>		
Wayne County 2016 Five-Year ACS		
<b>Disability Type</b>	<b>Population with Disability</b>	<b>Percent with Disability</b>
Hearing disability	472	7.5%
Vision disability	184	2.9%
Cognitive disability	404	6.9%
Ambulatory disability	598	10.2%
Self-Care disability	217	3.7%
Independent living disability	327	6.9%

## Education

Education and employment data, as estimated by the 2016 ACS, is presented in Table II.94.21. In 2016, some 2,797 persons were employed and 87 were unemployed. This totaled a labor force of 2,884 persons. The unemployment rate for Wayne County was estimated to be 3 percent in 2016.

<b>Table II.94.21</b>	
<b>Employment, Labor Force and Unemployment</b>	
Wayne County 2016 Five-Year ACS Data	
<b>Employment Status</b>	<b>2016 Five-Year ACS</b>
Employed	2,797
Unemployed	87
<b>Labor Force</b>	<b>2,884</b>
Unemployment Rate	3%

In 2016, 90.3 percent of households in Wayne County had a high school education or greater.

<b>Table II.94.22</b>	
<b>High School or Greater Education</b>	
Wayne County 2016 Five-Year ACS Data	
<b>Education Level</b>	<b>Households</b>
High School or Greater	2,324
Total Households	2,574
<b>Percent High School or Above</b>	<b>90.3%</b>

As seen in Table II.94.23, some 43.7 percent of the population had a high school diploma or equivalent, another 30.4 percent have some college, 8.8 percent have a Bachelor's Degree, and 3.6 percent of the population had a graduate or professional degree.

<b>Table II.94.23</b>		
<b>Educational Attainment</b>		
Wayne County 2016 Five-Year ACS Data		
<b>Education Level</b>	<b>Population</b>	<b>Percent</b>
Less Than High School	655	13.5%
High School or Equivalent	2,122	43.7%
Some College or Associates Degree	1,477	30.4%
Bachelor's Degree	426	8.8%
Graduate or Professional Degree	176	3.6%
<b>Total Population Above 18 years</b>	<b>4,856</b>	<b>100.0%</b>



## ECONOMICS

### Labor Force

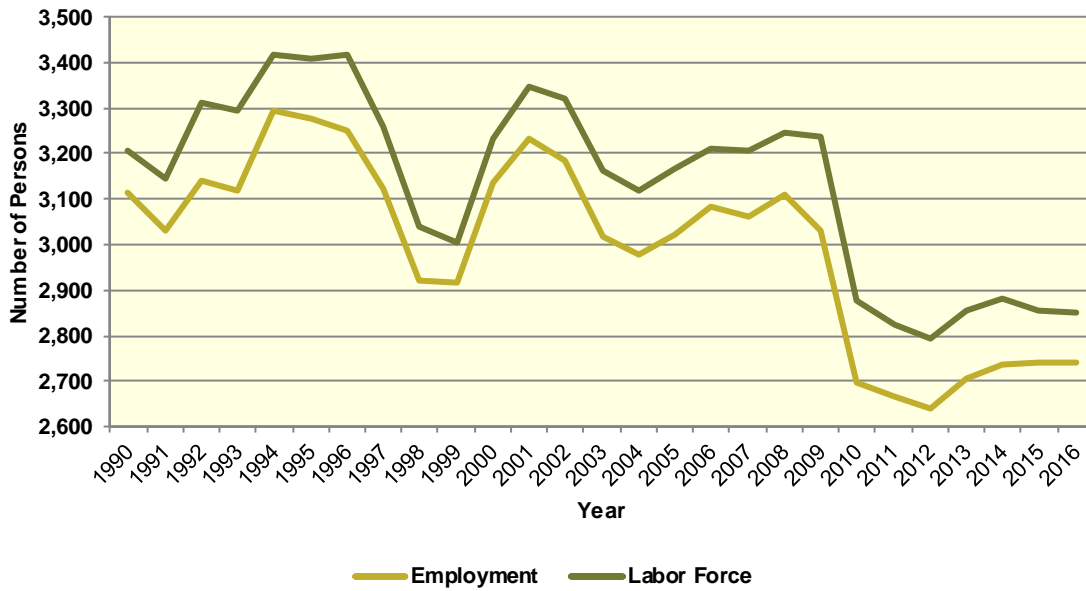
Table II.94.24, shows the labor force statistics for Wayne County from 1990 to the present. Over the entire series the lowest unemployment rate occurred in 1990 with a rate of 2.9 percent. The highest level of unemployment occurred during 2009 rising to a rate of 6.3 percent. This compared to a statewide low of 2.6 in 1999 and statewide high of 6.4 percent in 2009. Over the last year, the unemployment rate in Wayne County decreased from 4 percent in 2015 to 3.9 percent in 2016, which compared to a statewide decrease to 3.7 percent.

Table II.94.24 Labor Force Statistics Wayne County 1990 - 2016 BLS Data					
Year	Wayne County				Statewide Unemployment Rate
	Unemployment	Employment	Labor Force	Unemployment Rate	
1990	93	3,115	3,208	2.9%	4.4%
1991	116	3,030	3,146	3.7%	4.7%
1992	172	3,139	3,311	5.2%	4.5%
1993	177	3,117	3,294	5.4%	4%
1994	121	3,295	3,416	3.5%	3.5%
1995	134	3,276	3,410	3.9%	3.4%
1996	164	3,252	3,416	4.8%	3.5%
1997	137	3,122	3,259	4.2%	3.1%
1998	118	2,922	3,040	3.9%	2.7%
1999	88	2,916	3,004	2.9%	2.6%
2000	97	3,136	3,233	3%	2.6%
2001	117	3,232	3,349	3.5%	3.3%
2002	139	3,183	3,322	4.2%	4%
2003	145	3,017	3,162	4.6%	4.5%
2004	140	2,977	3,117	4.5%	4.5%
2005	146	3,020	3,166	4.6%	4.3%
2006	128	3,083	3,211	4%	3.7%
2007	145	3,063	3,208	4.5%	3.7%
2008	137	3,109	3,246	4.2%	4.2%
2009	205	3,031	3,236	6.3%	6.4%
2010	177	2,699	2,876	6.2%	6%
2011	156	2,667	2,823	5.5%	5.5%
2012	152	2,640	2,792	5.4%	5%
2013	148	2,707	2,855	5.2%	4.7%
2014	146	2,736	2,882	5.1%	4.3%
2015	114	2,740	2,854	4%	3.8%
2016	110	2,739	2,849	3.9%	3.7%

Diagram II.94.3, shows the employment and labor force for Wayne County. The difference between the two lines represents the number of unemployed persons. In the most recent year, employment stood at 2,739 persons, with the labor force reaching 2,849, indicating there were a total of 110 unemployed persons.



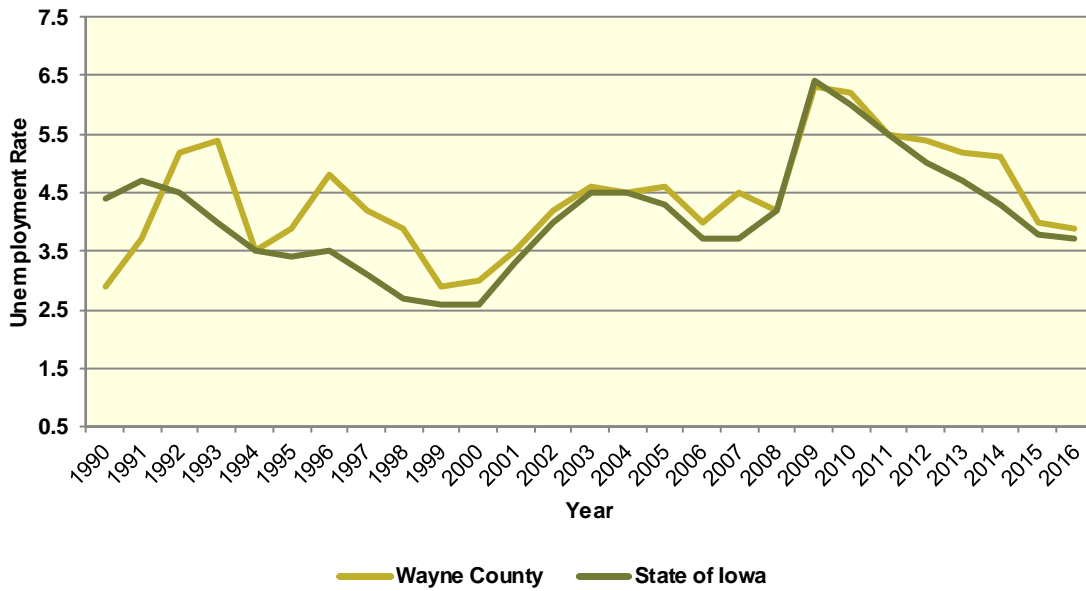
**Diagram II.94.3**  
**Employment and Labor Force**  
 Wayne County  
 1990 – 2016 BLS Data



**Unemployment**

Diagram II.94.4, shows the unemployment rate for both the State and Wayne County. During the 1990’s the average rate for Wayne County was 4.1 percent, which compared to 3.6 percent statewide. Between 2000 and 2010 the unemployment rate had an average of 4.3 percent, which compared to 4.1 percent statewide. Since 2010, the average unemployment rate was 5 percent. Over the course of the entire period the Wayne County had an average unemployment rate that higher than the State, 4.4 percent for Wayne County, versus 4.1 statewide.

**Diagram II.94.4**  
**Annual Unemployment Rate**  
 Wayne County  
 1990 – 2016 BLS Data



**Earnings and Employment**

The Bureau of Economic Analysis (B.E.A.) produces regional economic accounts, which provide a consistent framework for analyzing and comparing individual state and local area economies. Table II.94.25, shows total real earnings by industry for Wayne County. In the most recent 2016 estimate, the government and government enterprises industry had the largest total real earnings, with total real earnings reaching \$34,883,000. Between 2015 and 2016 the mining industry saw the largest percentage increase, rising by 37.4 percent.

**Table II.94.25**  
**Real Earnings by Industry**  
 Wayne County  
 BEA Table CA-5N Data (1,000's of 2016 Dollars)

NAICS Categories	2001	2010	2011	2012	2013	2014	2015	2016	% Change 15-16
Farm earnings	5,691	18,031	37,189	15,895	43,945	27,489	17,121	14,594	-14.8
Forestry, fishing, related activities, and other	0	0	0	0	0	1,002	0	0	0
Mining	0	187	181	88	0	0	52	71	37.4
Utilities	0	0	0	0	0	0	0	0	0
Construction	4,274	0	0	0	0	14,926	0	0	0
Manufacturing	17,468	24,126	25,455	27,097	28,420	30,619	30,650	28,995	-5.4
Wholesale trade	5,670	5,619	5,545	5,218	4,609	4,938	4,800	5,139	7.1
Retail trade	5,902	5,538	5,750	5,923	6,005	5,927	5,664	5,583	-1.4
Transportation and warehousing	0	0	0	0	0	0	0	0	0
Information	494	578	490	421	0	392	0	397	0
Finance and insurance	3,288	0	0	0	0	0	0	0	0
Real estate and rental and leasing	124	0	0	0	0	0	0	0	0
Professional and technical services	1,576	2,163	2,057	2,114	2,983	2,735	2,927	3,143	7.4
Management of companies and enterprises	0	0	0	0	0	0	0	0	0
Administrative and waste services	720	0	0	0	0	0	0	0	0
Educational services	166	243	160	128	79	79	75	97	29.4
Health care and social assistance	6,358	6,186	5,107	5,264	5,397	7,134	6,021	6,564	9
Arts, entertainment, and recreation	0	342	246	274	208	238	213	185	-13
Accommodation and food services	0	882	1,136	1,085	1,000	839	742	732	-1.3
Other services, except public administration	4,601	5,261	5,391	5,977	6,014	6,408	6,750	7,057	4.6
Government and government enterprises	25,250	32,112	31,921	33,118	35,139	34,696	35,489	34,883	-1.7
<b>Total</b>	<b>86,846</b>	<b>120,356</b>	<b>144,006</b>	<b>129,539</b>	<b>159,528</b>	<b>147,033</b>	<b>137,657</b>	<b>138,416</b>	<b>0.6</b>



Table II.94.26, shows the total employment by industry for the Wayne County. The most recent estimates show the farm industry was the largest employer in Wayne County, with employment reaching 662 jobs in 2016. Between 2015 and 2016 the educational services industry saw the largest percentage increase, rising by 7.1 percent.

<b>NAICS Categories</b>	<b>2001</b>	<b>2010</b>	<b>2011</b>	<b>2012</b>	<b>2013</b>	<b>2014</b>	<b>2015</b>	<b>2016</b>	<b>% Change 15-16</b>
Farm earnings	842	726	699	659	676	655	668	662	-0.9
Forestry, fishing, related activities, and other	0	0	0	0	0	70	0	0	0
Mining	0	11	0	0	0	13	14	14	0
Utilities	0	0	0	0	0	0	0	0	0
Construction	139	0	0	0	0	254	0	0	0
Manufacturing	430	485	516	523	553	545	536	501	-6.5
Wholesale trade	132	128	139	127	119	116	123	128	4.1
Retail trade	379	281	297	300	274	311	337	336	-0.3
Transportation and warehousing	0	0	0	0	0	0	0	0	0
Information	22	20	17	21	0	18	0	21	0
Finance and insurance	102	0	0	0	0	0	0	0	0
Real estate and rental and leasing	60	0	0	0	0	0	0	0	0
Professional and technical services	69	70	69	69	100	82	84	86	2.4
Management of companies and enterprises	0	0	0	0	0	0	0	0	0
Administrative and waste services	40	0	0	0	0	0	0	0	0
Educational services	0	10	0	11	13	12	14	15	7.1
Health care and social assistance	252	212	206	242	232	264	207	212	2.4
Arts, entertainment, and recreation	0	18	20	22	21	20	23	20	-13
Accommodation and food services	0	115	121	99	92	82	75	77	2.7
Other services, except public administration	223	206	204	201	199	225	239	245	2.5
Government and government enterprises	640	630	610	621	641	633	633	642	1.4
<b>Total</b>	<b>3,609</b>	<b>3,461</b>	<b>3,495</b>	<b>3,474</b>	<b>3,540</b>	<b>3,605</b>	<b>3,622</b>	<b>3,623</b>	<b>0</b>



Table II.94.27, shows the real average earnings per job by industry for Wayne County. These figures are calculated by dividing the total real earning displayed in Tables II.94.25 and II.94.26, by industry. In 2016, the manufacturing industry had the highest average earnings reaching 57,874 dollars. Between 2015 and 2016 the mining industry saw the largest percentage increase, rising by 37.4 percent.

**Table II.94.27**  
**Real Earnings Per Job by Industry**  
 Wayne County  
 BEA Table CA5N and CA25 Data

NAICS Categories	2001	2010	2011	2012	2013	2014	2015	2016	% Change 15-16
Farm earnings	6,759	24,837	53,203	24,119	65,007	41,968	25,630	22,045	-14
Forestry, fishing, related activities, and other	0	0	0	0	0	14,308	0	0	0
Mining	0	17,015	0	0	0	0	3,691	5,071	37.4
Utilities	0	0	0	0	0	0	0	0	0
Construction	30,749	0	0	0	0	58,763	0	0	0
Manufacturing	40,623	49,745	49,332	51,810	51,392	56,181	57,184	57,874	1.2
Wholesale trade	42,954	43,901	39,890	41,084	38,727	42,569	39,028	40,148	2.9
Retail trade	15,571	19,708	19,359	19,744	21,918	19,059	16,806	16,616	-1.1
Transportation and warehousing	0	0	0	0	0	0	0	0	0
Information	22,440	28,900	28,809	20,024	0	21,790	0	18,905	0
Finance and insurance	32,236	0	0	0	0	0	0	0	0
Real estate and rental and leasing	2,063	0	0	0	0	0	0	0	0
Professional and technical services	22,834	30,905	29,814	30,640	29,834	33,357	34,846	36,547	4.9
Management of companies and enterprises	0	0	0	0	0	0	0	0	0
Administrative and waste services	17,997	0	0	0	0	0	0	0	0
Educational services	0	24,331	0	11,651	6,094	6,571	5,355	6,467	20.8
Health care and social assistance	25,230	29,181	24,790	21,753	23,261	27,021	29,088	30,962	6.4
Arts, entertainment, and recreation	0	19,022	12,298	12,470	9,928	11,879	9,251	9,250	0
Accommodation and food services	0	7,668	9,388	10,956	10,866	10,228	9,889	9,506	-3.9
Other services, except public administration	20,634	25,541	26,424	29,737	30,220	28,478	28,242	28,804	2
Government and government enterprises	39,452	50,971	52,330	53,331	54,819	54,813	56,065	54,335	-3.1
<b>Total</b>	<b>24,064</b>	<b>34,775</b>	<b>41,204</b>	<b>37,288</b>	<b>45,064</b>	<b>40,786</b>	<b>38,006</b>	<b>38,205</b>	<b>0.5</b>

Table II.94.28 shows total employment and real personal income for the years of 1969 to 2016. As can be seen in total real personal income in 2016, comprising all wage and salary earnings, proprietorship income, dividends, interest, rents, and transfer payments, was \$251,714,000 a 1.4 percent change between 2015 and 2016. Table II.94.28, shows further annual data for the years 1969 through 2016. In 2010, total employment was 3,461 and 3,623 in 2016.

**Table II.94.28**  
**Total Employment and Real Personal Income**  
 Wayne County  
 BEA Data 1969 Through 2015

Year	1,000s of 2016 Dollars						Per Capita Income	Total Employment	Average Real Earnings Per Job
	Earnings	Social Security Contributions	Residents Adjustments	Dividends, Interest, Rents	Transfer Payments	Personal Income			
1969	83,409	4,382	3,321	23,254	18,934	124,537	14,712	3,481	23,960
1970	90,577	4,452	3,400	24,834	20,367	134,726	16,091	3,596	25,186
1971	83,799	4,674	3,371	25,712	21,569	129,777	15,717	3,562	23,524
1972	102,436	5,051	3,298	27,648	21,825	150,156	18,086	3,493	29,326
1973	121,253	6,115	3,034	32,069	23,436	173,678	20,673	3,566	34,003
1974	90,198	6,751	2,457	34,169	24,752	144,825	17,329	3,643	24,759
1975	95,586	6,407	1,677	37,587	27,871	156,315	19,083	3,613	26,457
1976	98,609	6,783	1,125	38,505	28,794	160,249	19,552	3,653	26,996
1977	79,933	6,733	181	42,055	28,354	143,790	17,383	3,621	22,074
1978	108,871	7,590	-1,354	44,715	29,461	174,102	21,337	3,663	29,721
1979	93,463	8,366	1,240	48,336	31,174	165,847	20,402	3,824	24,440
1980	80,510	7,717	2,579	53,734	32,627	161,733	19,771	3,804	21,165
1981	81,435	8,195	2,889	58,817	34,194	169,141	20,907	3,886	20,955
1982	74,232	7,922	2,682	60,932	36,427	166,352	20,904	3,764	19,721
1983	62,884	7,572	2,451	61,673	37,934	157,370	19,998	3,726	16,877
1984	72,994	8,232	2,180	61,865	38,865	167,671	21,449	3,673	19,873
1985	83,166	8,209	2,523	57,549	38,139	173,168	23,024	3,586	23,191
1986	92,433	8,800	2,565	56,758	37,128	180,084	24,464	3,555	26,000
1987	96,311	9,006	3,235	51,491	35,855	177,886	24,597	3,524	27,329
1988	81,561	9,302	4,112	47,557	34,349	158,276	22,346	3,500	23,303
1989	88,894	9,728	3,880	49,650	36,497	169,193	23,975	3,585	24,796
1990	86,615	9,730	4,514	47,226	37,218	165,844	23,441	3,577	24,214
1991	79,758	9,417	6,065	46,078	38,703	161,187	22,841	3,525	22,626
1992	84,334	9,452	7,202	41,560	40,398	164,041	23,378	3,597	23,446
1993	72,962	9,707	8,043	38,599	40,844	150,740	21,402	3,569	20,443
1994	94,018	10,047	9,473	37,044	41,802	172,290	24,705	3,654	25,730
1995	75,988	10,283	8,979	42,190	42,184	159,058	22,922	3,720	20,426
1996	92,306	8,909	11,132	43,938	43,843	182,310	26,285	3,716	24,840
1997	96,191	10,143	14,216	43,040	42,079	185,383	26,829	3,656	26,310
1998	84,614	9,840	17,760	45,024	43,650	181,208	26,566	3,528	23,984
1999	85,988	9,812	19,737	41,090	43,661	180,664	26,812	3,460	24,852
2000	97,443	9,846	21,474	41,607	46,447	197,124	29,299	3,484	27,968
2001	86,846	9,951	19,957	44,362	46,711	187,925	28,238	3,609	24,064
2002	98,434	10,064	19,765	40,177	49,334	197,646	29,654	3,529	27,893
2003	95,951	10,024	18,944	39,021	45,761	189,653	28,674	3,415	28,097
2004	108,002	10,079	18,692	39,012	48,506	204,133	31,113	3,410	31,672
2005	101,478	10,411	18,390	33,793	48,615	191,866	29,546	3,487	29,102
2006	92,876	10,977	18,766	32,853	51,329	184,847	28,534	3,512	26,446
2007	95,622	11,247	19,507	37,973	54,622	196,477	30,815	3,591	26,628
2008	113,287	11,915	20,749	41,702	60,437	224,261	35,189	3,559	31,832
2009	115,231	11,930	20,153	44,216	60,233	227,903	35,649	3,492	32,999
2010	120,356	12,779	17,383	39,630	59,619	224,209	35,032	3,461	34,775
2011	144,006	12,052	15,775	44,646	59,376	251,752	39,540	3,495	41,204
2012	129,539	12,279	17,191	47,863	59,664	241,978	38,022	3,474	37,288
2013	159,528	13,856	15,182	44,757	58,930	264,541	41,193	3,540	45,064
2014	147,033	13,964	17,271	44,919	57,183	252,441	39,493	3,605	40,785
2015	137,657	13,862	18,228	46,825	59,403	248,250	38,874	3,622	38,006
2016	138,416	14,348	20,246	47,609	59,791	251,714	39,013	3,623	38,205

Diagram II.94.5, shows real average earnings per job for Wayne County from 1990 to 2016. Over this period the average earning per job for Wayne County was \$29,589, which was lower than the statewide average of \$43,526 over the same period.

**Diagram II.94.5**  
**Real Average Earnings Per Job**  
 Wayne County  
 BEA Data 1990 - 2016

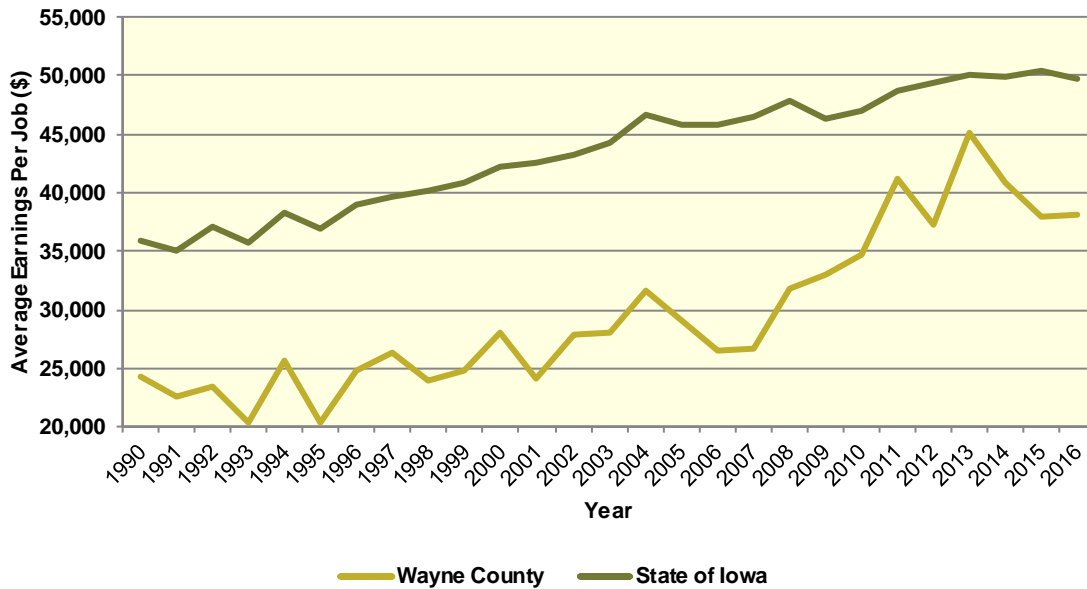
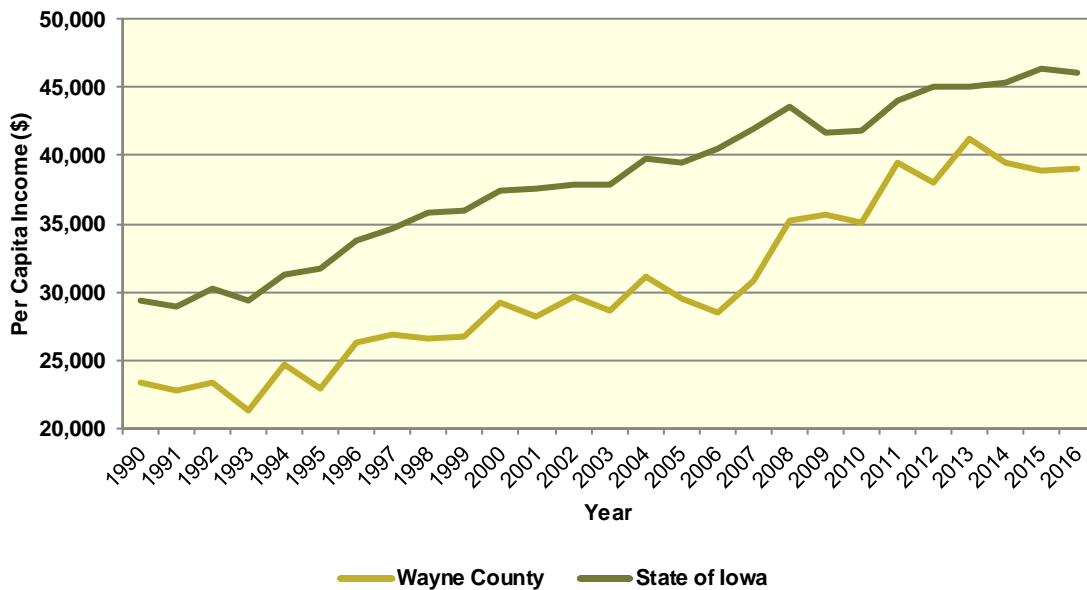


Diagram II.94.6, shows real per capita income for the Wayne County from 1990 to 2016, which is calculated by dividing total personal income from all sources by population. Per capita income is a broader measure of wealth than real average earnings per job, which only captures the working population. Over this period, the real per capita income for Wayne County was \$30,484, which was lower than the statewide average of \$38,254 over the same period.

**Diagram II.94.6**  
**Real Per Capita Income**  
 Wayne County  
 BEA Data 1990 - 2016



**Quarterly Census of Employment and Wages**

The BLS produces the Quarterly Census of Employment and Wages (QCEW), which reports monthly data on employment and quarterly data on wages and number of business establishments. QCEW employment data represent only filled jobs, whether full or part-time, temporary or permanent, by place of work the pay period. If data do not meet BLS or State agency disclosure standards they are displayed as (ND) and not disclosed. Data from this series are from the period of January 2006 through December 2016 and are presented in Table II.94.29, with the 2016 information considered preliminary (p). Between 2015 and 2016, total annual employment decreased from 1,867 persons in 2015 to 1,856 in 2016, a change of -0.6 percent.

**Table II.94.29**  
**Total Monthly Employment**  
 Wayne County  
 BLS QCEW Data, 2001–2016(p)

Period	2006	2007	2008	2009	2010	2011	2012	2013	2014	2015	2016
Jan	1,783	1,847	1,865	1,861	1,852	1,796	1,870	1,862	1,909	1,878	1,839
Feb	1,801	1,869	1,884	1,849	1,860	1,821	1,851	1,861	1,899	1,886	1,843
Mar	1,801	1,857	1,898	1,893	1,883	1,828	1,867	1,893	1,901	1,889	1,863
Apr	1,822	1,894	1,904	1,856	1,905	1,887	1,885	1,913	1,935	1,887	1,886
May	1,852	1,886	1,927	1,838	1,907	1,903	1,919	1,994	1,935	1,888	1,885
Jun	1,891	1,930	1,960	1,880	1,966	1,898	1,933	1,996	1,938	1,888	1,879
Jul	1,785	1,817	1,889	1,801	1,840	1,817	1,835	1,894	1,846	1,814	1,807
Aug	1,817	1,833	1,877	1,775	1,822	1,803	1,823	1,893	1,831	1,795	1,787
Sep	1,813	1,862	1,903	1,833	1,849	1,867	1,871	1,943	1,877	1,830	1,864
Oct	1,881	1,878	1,917	1,857	1,851	1,841	1,861	1,921	1,911	1,872	1,863
Nov	1,882	1,911	1,918	1,847	1,884	1,880	1,903	1,978	1,935	1,893	1,888
Dec	1,871	1,909	1,935	1,866	1,887	1,879	1,886	1,952	1,946	1,885	1,873
<b>Annual</b>	<b>1,833</b>	<b>1,874</b>	<b>1,906</b>	<b>1,846</b>	<b>1,876</b>	<b>1,852</b>	<b>1,875</b>	<b>1,925</b>	<b>1,905</b>	<b>1,867</b>	<b>1,856</b>
% Change	.	2.2%	1.7%	-3.1%	1.6%	-1.3%	1.2%	2.7%	-1%	-2%	-0.6%



The QCEW also reports average weekly wages, which represents total compensation paid during the calendar quarter, regardless of when services were performed. The BLS QCEW data indicated average weekly wages were \$677 in 2015. In 2016, average weekly wages saw an increased of 0.1 percent over the prior year, rising to \$678, or by 1 dollars. These data are shown in Table II.94.30.

<b>Table II.94.30</b>						
<b>Average Weekly Wages</b>						
Wayne County						
BLS QCEW Data, 2001–2016(p)						
<b>Year</b>	<b>First Quarter</b>	<b>Second Quarter</b>	<b>Third Quarter</b>	<b>Fourth Quarter</b>	<b>Annual</b>	<b>% Change</b>
2001	378	390	382	393	386	
2002	384	397	388	399	392	1.6%
2003	391	403	418	409	405	3.3%
2004	412	409	423	437	420	3.7%
2005	414	429	435	444	430	2.4%
2006	441	457	446	463	452	5.1%
2007	445	477	460	501	471	4.2%
2008	510	515	500	526	513	8.9%
2009	512	533	521	567	533	3.9%
2010	549	562	549	588	562	5.4%
2011	566	599	601	582	587	4.4%
2012	608	607	600	603	605	3.1%
2013	629	617	640	614	625	3.3%
2014	669	653	657	652	658	5.3%
2015	671	665	670	703	677	2.9%
2016(p)	645	648	709	709	678	0.1%

Total business establishments reported by the QCEW are displayed in Table II.94.31. Between 2015 and 2016, the total number of business establishments in Wayne County increased by 0.1 percent, from 185 to 193 establishments.

<b>Table II.94.31</b>						
<b>Number of Business Establishments</b>						
Wayne County						
BLS QCEW Data, 2001–2016(p)						
<b>Year</b>	<b>First Quarter</b>	<b>Second Quarter</b>	<b>Third Quarter</b>	<b>Fourth Quarter</b>	<b>Annual</b>	<b>% Change</b>
2001	219	219	205	207	213	
2002	203	202	203	204	203	-4.7%
2003	202	199	197	202	200	-1.5%
2004	196	199	201	198	199	-0.5%
2005	198	201	201	196	199	(ND)%
2006	195	194	200	199	197	-1%
2007	206	193	196	195	198	0.5%
2008	191	195	197	195	195	-1.5%
2009	200	200	197	190	197	1%
2010	189	191	188	188	189	-4.1%
2011	186	186	182	182	184	-2.6%
2012	186	187	185	188	187	1.6%
2013	185	188	186	184	186	-0.5%
2014	186	186	190	189	188	1.1%
2015	187	186	183	182	185	-1.6%
2016	187	191	197	198	193	4.3%

## Iowa Department of Revenue

The Iowa Department of Revenue releases annual income tax statistics. Table II.94.32, shows the number of returns by adjusted gross income. For taxpayer confidentiality, if the number of returns was fewer than 5, the data was redacted. As a result the number of returns reported maybe slightly lower than the actual returns. Most redacted records occurred in the highest income brackets. The table gives an accurate measure of the income distribution in Wayne County.

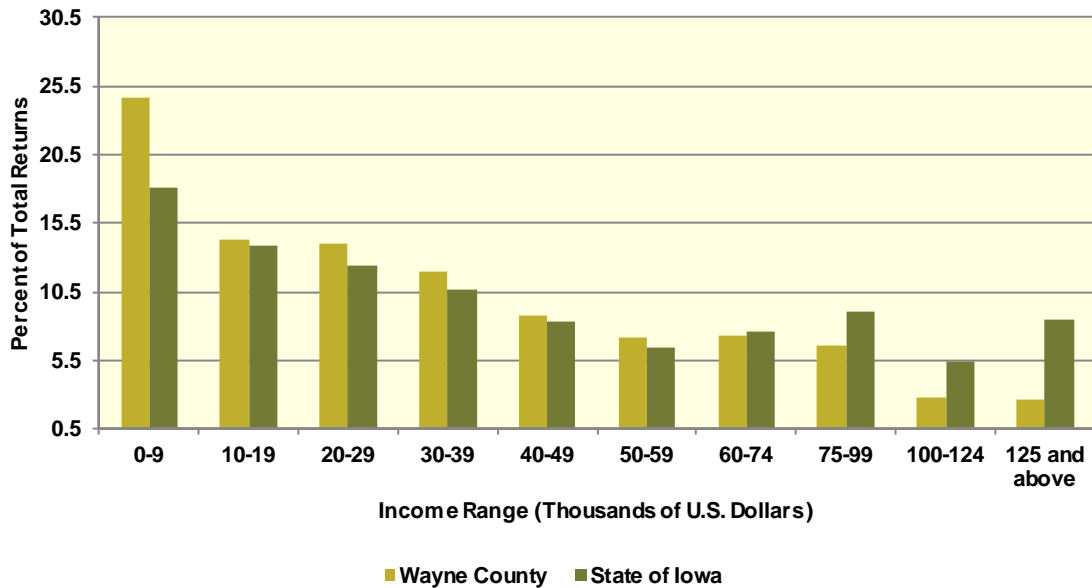
As can be seen, the total number of returns between 2010 and 2015 increased by 6.5 percent, with 71 returns reported in 2015, which was the most recent year available. Between 2010 and 2015, the adjusted gross income class that saw the largest change was \$0-9,999 with a change of 36.5 percent. This compared to the income class of \$20,000-29,999, which saw the lowest percentage change between 2010 and 2015 of -14.5 percent.

**Table II.94.32**  
**Number of Tax Returns by Adjusted Gross Income**  
 Wayne County  
 Iowa DOR 2002 - 2015

Year	\$0 – 9,999	\$10,000 – 19,999	\$20,000 – 29,999	\$30,000 – 39,999	\$40,000 – 49,999	\$50,000 – 59,999	\$60,000 – 74,999	\$75,000 – 99,999	\$100,000 – 124,999	\$125,000 and above	Total
2002	741	462	401	260	223	132	125	53	6	19	2,422
2003	719	473	369	261	215	175	95	62	18	21	2,408
2004	722	485	375	265	217	159	121	81	17	21	2,463
2005	664	500	365	266	213	166	144	96	19	14	2,447
2006	667	433	380	268	247	166	143	106	22	36	2,468
2007	701	443	377	266	210	185	164	129	39	46	2,560
2008	689	383	358	279	220	169	187	124	47	55	2,511
2009	677	429	362	295	219	158	164	132	39	64	2,539
2010	639	447	342	295	217	155	164	144	57	52	2,512
2011	627	430	348	307	211	160	174	149	56	61	2,523
2012	605	399	353	324	194	165	168	163	52	88	2,511
2013	626	369	364	336	238	164	168	162	70	73	2,570
2014	629	374	355	330	252	179	186	165	85	82	2,637
2015	658	382	375	321	234	191	195	176	73	71	2,676
<b>Change 10 - 15</b>	<b>3%</b>	<b>-14.5%</b>	<b>9.6%</b>	<b>8.8%</b>	<b>7.8%</b>	<b>23.2%</b>	<b>18.9%</b>	<b>22.2%</b>	<b>28.1%</b>	<b>36.5%</b>	<b>6.5%</b>



**Diagram II.94.7**  
**2015 Income Distribution**  
 Wayne County  
 2015 Iowa DOR Data



**Poverty**

Poverty is the condition of having insufficient resources or income. In its extreme form, poverty is a lack of basic human needs, such as adequate and healthy food, clothing, housing, water, and health services. According to the Census Bureau’s Small Area Income and Poverty Estimates Program, the number of individuals in poverty increase from 1,057 in 2010 to 1,134 in 2016, with the poverty rate reaching 17.9 percent in 2016. This compared to a state poverty rate of 11.7 percent and a national rate of 14 percent in 2016. Table II.94.33, at right, presents poverty data for the county.

Year	Persons in Poverty	Poverty Rate
2000	936	14.1%
2001	873	13.2%
2002	948	14.2%
2003	823	12.5%
2004	895	13.6%
2005	974	15%
2006	955	14.8%
2007	966	15.6%
2008	1,002	16.3%
2009	1,024	16.6%
2010	1,057	16.8%
2011	1,069	17.2%
2012	1,100	17.6%
2013	893	14.2%
2014	1,050	16.7%
2015	1,030	16.4%
2016	1,134	17.9%

The rate of poverty for Wayne County is shown in Table II.94.34. In 2016, there were an estimated 924 persons living in poverty. This represented a 14.7 percent poverty rate, compared to 14 percent poverty in 2000. In 2016, some 13 percent of those in poverty were under age 6, and 16.8 percent were 65 or older.

<b>Table II.94.34</b> <b>Poverty by Age</b> Wayne County 2000 Census SF3 & 2016 Five-Year ACS Data				
Age	2000 Census		2016 Five-Year ACS	
	Persons in Poverty	% of Total	Persons in Poverty	% of Total
Under 6	96	10.4%	120	13%
6 to 17	180	19.5%	225	24.4%
18 to 64	438	47.5%	424	45.9%
65 or Older	209	22.6%	155	16.8%
<b>Total</b>	<b>923</b>	<b>100.0%</b>	<b>924</b>	<b>100.0%</b>
<b>Poverty Rate</b>	<b>14%</b>	.	<b>14.7%</b>	.

## HOUSING

The Census Bureau estimates that the total number of housing units decreased by -1.1 percent in Wayne County between 2010 and 2016, from 3,212 to 3,177. This compared to an estimated 3.3 percent increase statewide, as shown in Table II.94.35.

### Housing Production

The Census Bureau reports building permit authorizations and “per unit” valuation of building permits by county annually. Single-family construction usually represents most residential development in the county. Single-family building permit authorizations in Wayne County increased from 1 authorization in 2015 to 3 in 2016.

The real value of single-family building permits decreased from \$334,347 in 2015 to \$100,333 in 2016. This compares to an increase in permit value statewide, with values rising from \$234,346 in 2015 to \$235,750 in 2016. Additional details are given in Table II.94.36.

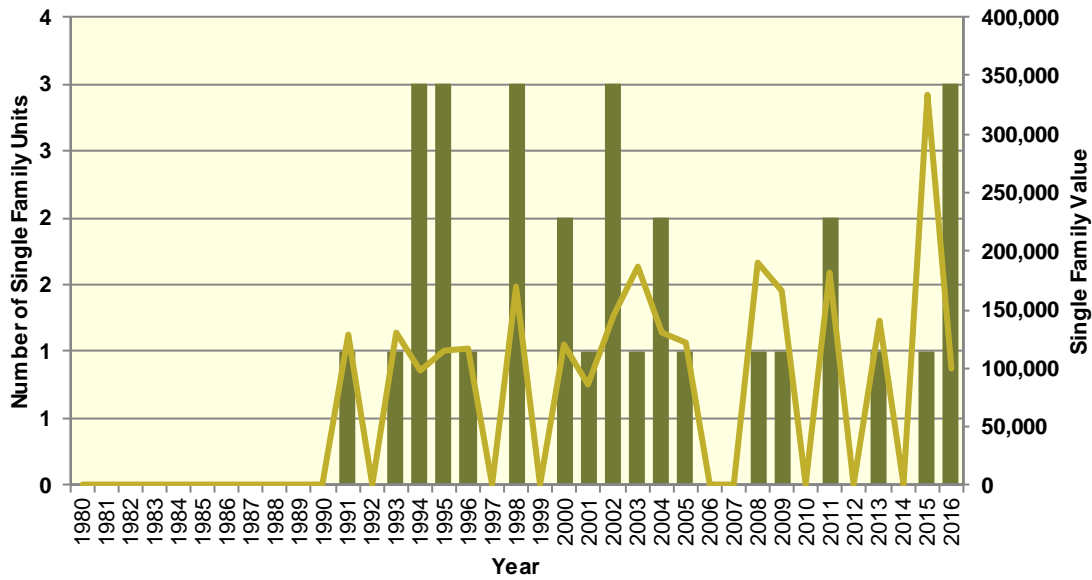
<b>Table II.94.35</b> <b>Housing Units</b> State of Iowa vs. Wayne County 2000 and 2016 Census Data and Intercensal Estimates				
Subject	Iowa	% Growth Since Census	Wayne County	% Growth Since Census
2000 Census Base	1,232,625	.	3,358	.
2010 Census	1,336,417	8.4%	3,212	-4.3%
July 2011 Estimate	1,341,974	0.4%	3,204	-0.2%
July 2012 Estimate	1,346,403	0.7%	3,201	-0.3%
July 2013 Estimate	1,353,274	1.3%	3,193	-0.6%
July 2014 Estimate	1,362,458	1.9%	3,186	-0.8%
July 2015 Estimate	1,370,778	2.6%	3,185	-0.8%
July 2016 Estimate	1,380,162	3.3%	3,177	-1.1%

**Table II.94.36**  
**Building Permits and Valuation**  
 Wayne County  
 Census Bureau Data, 1980–2016

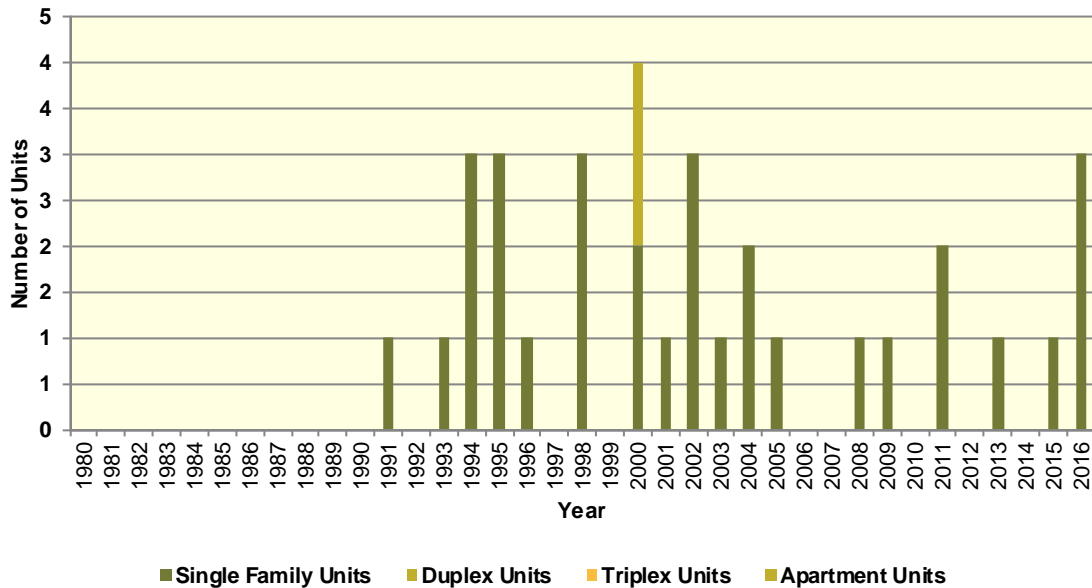
Year	Authorized Construction in Permit Issuing Areas					Per Unit Valuation, (Real 2016\$)	
	Single-Family	Duplex Units	Tri- and Four-Plex	Multi-Family Units	Total Units	Single-Family Units	Multi-Family Units
1980	0	0	0	0	0	0	0
1981	0	0	0	0	0	0	0
1982	0	0	0	0	0	0	0
1983	0	0	0	0	0	0	0
1984	0	0	0	0	0	0	0
1985	0	0	0	0	0	0	0
1986	0	0	0	0	0	0	0
1987	0	0	0	0	0	0	0
1988	0	0	0	0	0	0	0
1989	0	0	0	0	0	0	0
1990	0	0	0	0	0	0	0
1991	1	0	0	0	1	129,220	0
1992	0	0	0	0	0	0	0
1993	1	0	0	0	1	131,112	0
1994	3	0	0	0	3	98,172	0
1995	3	0	0	0	3	114,909	0
1996	1	0	0	0	1	116,245	0
1997	0	0	0	0	0	0	0
1998	3	0	0	0	3	169,587	0
1999	0	0	0	0	0	0	0
2000	2	2	0	0	4	120,441	0
2001	1	0	0	0	1	86,494	0
2002	3	0	0	0	3	146,333	0
2003	1	0	0	0	1	186,303	0
2004	2	0	0	0	2	130,049	0
2005	1	0	0	0	1	121,153	0
2006	0	0	0	0	0	0	0
2007	0	0	0	0	0	0	0
2008	1	0	0	0	1	190,904	0
2009	1	0	0	0	1	167,168	0
2010	0	0	0	0	0	0	0
2011	2	0	0	0	2	182,039	0
2012	0	0	0	0	0	0	0
2013	1	0	0	0	1	140,728	0
2014	0	0	0	0	0	0	0
2015	1	0	0	0	1	334,347	0
2016	3	0	0	0	3	100,333	0



**Diagram II.94.8**  
**Single Family Permits**  
 Wayne County  
 Census Bureau Data, 1980–2016



**Diagram II.94.9**  
**Total Permits by Unit Type**  
 Wayne County  
 Census Bureau Data, 1980–2016



## Housing Characteristics

Housing types by unit are shown in Table II.94.37. In 2016, there were 3,173 housing units, up from 3,357 in 2000. Single-family units accounted for 86.4 percent of units in 2016, compared to 85 in 2000. Apartment units accounted for 0.9 percent in 2016, compared to 0.7 percent in 2000.

<b>Table II.94.37</b>				
<b>Housing Units by Type</b>				
Wayne County				
2000 Census SF3 & 2016 Five-Year ACS Data				
Unit Type	2000 Census		2016 Five-Year ACS	
	Units	% of Total	Units	% of Total
Single-Family	2,854	85%	2,741	86.4%
Duplex	63	1.9%	83	2.6%
Tri- or Four-Plex	102	3%	107	3.4%
Apartment	22	0.7%	27	0.9%
Mobile Home	307	9.1%	210	6.6%
Boat, RV, Van, Etc.	9	0.3%	5	0.2%
<b>Total</b>	<b>3,357</b>	<b>100.0%</b>	<b>3,173</b>	<b>100.0%</b>

Some 82.6 percent of housing was occupied in 2010, compared to 84 percent in 2000. Owner-occupied housing changed -5.9 percent between 2000 and 2010, ending with owner-occupied units representing 79.4 percent of unit. Vacant units changed by 4.5 percent, resulting in 560 vacant units in 2010.

<b>Table II.94.38</b>					
<b>Housing Units by Tenure</b>					
Wayne County					
2000 & 2010 Census SF1 Data					
Tenure	2000 Census		2010 Census		% Change 00-10
	Units	% of Total	Units	% of Total	
Occupied Housing Units	2,821	84%	2,652	82.6%	-6%
Owner-Occupied	2,237	79.3%	2,106	79.4%	-5.9%
Renter-Occupied	584	20.7%	546	20.6%	-6.5%
Vacant Housing Units	536	16%	560	17.4%	4.5%
<b>Total Housing Units</b>	<b>3,357</b>	<b>100.0%</b>	<b>3,212</b>	<b>100.0%</b>	<b>-4.3%</b>

Table II.94.39 shows housing units by tenure from 2010 to 2016. By 2016, there were 3,173 housing units. An estimated 79.4 percent were owner-occupied, and 18.9 percent were vacant.

<b>Table II.94.39</b>				
<b>Housing Units by Tenure</b>				
Wayne County				
2010 Census & 2016 Five-Year ACS Data				
Tenure	2010 Census		2016 Five-Year ACS	
	Units	% of Total	Units	% of Total
Occupied Housing Units	2,652	82.6%	2,574	81.1%
Owner-Occupied	2,106	79.4%	2,044	79.4%
Renter-Occupied	546	20.6%	530	20.6%
Vacant Housing Units	560	17.4%	599	18.9%
<b>Total Housing Units</b>	<b>3,212</b>	<b>100.0%</b>	<b>3,173</b>	<b>100.0%</b>

Households by household size are shown in Table II.94.40. There were a total of 2,652 households in 2010, up from 2,821 in 2000. One person households changed by -5.5 percent



between 2000 and 2010, while two person households changed by -2.1 percent. Three and four person households changed by -13.4 and -21.8 respectively, representing 12.1 percent and 9.6 percent of the population in 2010.

<b>Table II.94.40</b>					
<b>Households by Household Size</b>					
Wayne County					
2000 & 2010 Census SF1 Data					
<b>Size</b>	<b>2000 Census</b>		<b>2010 Census</b>		<b>% Change 00-10</b>
	<b>Households</b>	<b>% of Total</b>	<b>Households</b>	<b>% of Total</b>	
One Person	841	29.8%	795	30%	-5.5%
Two Persons	1,064	37.7%	1,042	39.3%	-2.1%
Three Persons	372	13.2%	322	12.1%	-13.4%
Four Persons	325	11.5%	254	9.6%	-21.8%
Five Persons	153	5.4%	147	5.5%	-3.9%
Six Persons	39	1.4%	42	1.6%	7.7%
Seven Persons or More	27	1%	50	1.9%	85.2%
<b>Total</b>	<b>2,821</b>	<b>100.0%</b>	<b>2,652</b>	<b>100.0%</b>	<b>-6%</b>

Households by income is shown in Table II.94.41. Households earning more than \$100,000 per year represented 10.9 percent of households in 2016, compared to 4.1 percent in 2000. Households earning between \$50,000 and \$74,999 represented 22.3 percent of households in 2010, compared to 13.4 percent in 2000. Meanwhile, households earning less than \$15,000 accounted for 12.4 percent of households in 2016, compared to 23.2 percent in 2000.

<b>Table II.94.41</b>				
<b>Households by Income</b>				
Wayne County				
2000 Census SF3 & 2016 Five-Year ACS Data				
<b>Income</b>	<b>2000 Census</b>		<b>2016 Five-Year ACS</b>	
	<b>Households</b>	<b>% of Total</b>	<b>Households</b>	<b>% of Total</b>
Less than \$15,000	655	23.2%	318	12.4%
\$15,000 to \$19,999	288	10.2%	174	6.8%
\$20,000 to \$24,999	254	9%	199	7.7%
\$25,000 to \$34,999	482	17%	316	12.3%
\$35,000 to \$49,999	513	18.1%	449	17.4%
\$50,000 to \$74,999	380	13.4%	573	22.3%
\$75,000 to \$99,999	140	4.9%	265	10.3%
\$100,000 or More	117	4.1%	280	10.9%
<b>Total</b>	<b>2,829</b>	<b>100.0%</b>	<b>2,574</b>	<b>100.0%</b>



Table II.94.42, shows households by year home built. Housing units built between 2000 and 2009, and 2010 or later, account for 8.4 percent and 1.9 percent of households, respectively. Households built in the 1970's, 1980's, and 1990's account for 16.4 percent, 6.1 percent, and 6.6, respectively. Housing units built prior to 1939 represented 37.1 percent of households in 2016.

<b>Table II.94.42</b>				
<b>Households by Year Home Built</b>				
Wayne County				
2000 Census SF3 & 2016 Five-Year ACS Data				
<b>Year Built</b>	<b>2000 Census</b>		<b>2016 Five-Year ACS</b>	
	<b>Households</b>	<b>% of Total</b>	<b>Households</b>	<b>% of Total</b>
1939 or Earlier	1,252	44.4%	956	37.1%
1940 to 1949	223	7.9%	182	7.1%
1950 to 1959	221	7.8%	193	7.5%
1960 to 1969	297	10.5%	227	8.8%
1970 to 1979	467	16.6%	421	16.4%
1980 to 1989	146	5.2%	158	6.1%
1990 to 1999	215	7.6%	171	6.6%
2000 to 2009	.	.	216	8.4%
2010 or Later	.	.	50	1.9%
<b>Total</b>	<b>2,821</b>	<b>100.0%</b>	<b>2,574</b>	<b>100.0%</b>

The distribution of unit types by race are shown in Table II.94.43. An estimated 86.9 percent of white households occupy single family homes, while 100 percent of black households do. Some 0.4 percent of white households occupied apartments, while 0 percent of black households do. An estimated 0 percent of Asian, and 100 percent of American Indian households occupy single family homes.

<b>Table II.94.43</b>							
<b>Distribution of Units in Structure by Race</b>							
Wayne County							
2016 Five-Year ACS Data							
<b>Unit Type</b>	<b>White</b>	<b>Black</b>	<b>American Indian</b>	<b>Asian</b>	<b>Native Hawaiian/Pacific Islanders</b>	<b>Other</b>	<b>Two or More Races</b>
Single-Family	86.9%	100%	100%	0%	0%	0%	100%
Duplex	2.9%	0%	0%	0%	0%	0%	0%
Tri- or Four-Plex	3.1%	0%	0%	0%	0%	0%	0%
Apartment	0.4%	0%	0%	0%	0%	0%	0%
Mobile Home	6.6%	0%	0%	0%	0%	0%	0%
Boat, RV, Van, Etc.	0.2%	0%	0%	0%	0%	0%	0%
<b>Total</b>	<b>100.0%</b>	<b>100.0%</b>	<b>100.0%</b>	<b>100.0%</b>	<b>100.0%</b>	<b>100.0%</b>	<b>100.0%</b>

The disposition of vacant housing units in 2000 and 2010 are shown in Table II.94.44. An estimated 15.2 percent of vacant units were for rent in 2010, a 54.5 percent change since 2000. In addition, some 6.4 percent of vacant units were for sale, a change of -47.8 percent between 2000 and 2010. "Other" vacant units represented 39.6 percent of vacant units in 2010. This is a change of 8.3 percent since 2000. "Other" vacant units are not for sale or rent, or otherwise available to the marketplace. These units may be problematic if concentrated in certain areas, and may create a "blighting" effect.



<b>Table II.94.44</b>					
<b>Disposition of Vacant Housing Units</b>					
Wayne County					
2000 & 2010 Census SF1 Data					
Disposition	2000 Census		2010 Census		% Change 00–10
	Units	% of Total	Units	% of Total	
For Rent	55	10.3%	85	15.2%	54.5%
For Sale	69	12.9%	36	6.4%	-47.8%
Rented or Sold, Not Occupied	88	16.4%	66	11.8%	-25%
For Seasonal, Recreational, or Occasional Use	119	22.2%	151	27%	26.9%
For Migrant Workers	0	0%	0	0%	0%
Other Vacant	205	38.2%	222	39.6%	8.3%
<b>Total</b>	<b>536</b>	<b>100.0%</b>	<b>560</b>	<b>100.0%</b>	<b>4.5%</b>

The disposition of vacant units between 2010 and 2016 are shown in Table II.94.45. By 2016, for rent units accounted for 8.7 percent of vacant units, while for sale units accounted for 5.2 percent. “Other” vacant units accounted for 55.6 percent of vacant units, representing a total of 333 “other” vacant units.

<b>Table II.94.45</b>				
<b>Disposition of Vacant Housing Units</b>				
Wayne County				
2010 Census & 2016 Five-Year ACS Data				
Disposition	2010 Census		2016 Five-Year ACS	
	Units	% of Total	Units	% of Total
For Rent	85	15.2%	52	8.7%
For Sale	36	6.4%	31	5.2%
Rented Not Occupied	4	0.7%	11	1.8%
Sold Not Occupied	62	11.1%	15	2.5%
For Seasonal, Recreational, or Occasional Use	151	27%	157	26.2%
For Migrant Workers	0	0%	0	0%
Other Vacant	222	39.6%	333	55.6%
<b>Total</b>	<b>560</b>	<b>100.0%</b>	<b>599</b>	<b>100.0%</b>

## Housing Problems

Households are classified as having housing problems if they face overcrowding, incomplete plumbing or kitchen facilities, or cost burdens. Overcrowding is defined as having from 1.1 to 1.5 people per room per residence, with severe overcrowding defined as having more than 1.5 people per room. Households with overcrowding are shown in Table II.94.46. In 2016, an estimated 2.7 percent of households were overcrowded, and an additional 0.9 percent were severely overcrowded.

<b>Table II.94.46</b> <b>Overcrowding and Severe Overcrowding</b> Wayne County 2000 Census SF3 & 2016 Five-Year ACS Data							
Data Source	No Overcrowding		Overcrowding		Severe Overcrowding		Total
	Households	% of Total	Households	% of Total	Households	% of Total	
<b>Owner</b>							
2000 Census	2,224	99.2%	13	0.6%	6	0.3%	2,243
2016 Five-Year ACS	1,977	96.7%	53	2.6%	14	0.7%	2,044
<b>Renter</b>							
2000 Census	573	99.1%	5	0.9%	0	0%	578
2016 Five-Year ACS	503	94.9%	17	3.2%	10	1.9%	2,574
<b>Total</b>							
2000 Census	2,797	99.1%	18	0.6%	6	0.2%	2,821
2016 Five-Year ACS	2,480	96.3%	70	2.7%	24	0.9%	2,574

Incomplete plumbing and kitchen facilities are another indicator of potential housing problems. According to the Census Bureau, a housing unit is classified as lacking complete plumbing facilities when any of the following are not present: piped hot and cold water, a flush toilet, and a bathtub or shower. Likewise, a unit is categorized as deficient when any of the following are missing from the kitchen: a sink with piped hot and cold water, a range or cook top and oven, and a refrigerator.

There were a total of 25 households with incomplete plumbing facilities in 2016, representing 1 percent of households in Wayne County. This is compared to 1.1 percent of households lacking complete plumbing facilities in 2000.

<b>Table II.94.47</b> <b>Households with Incomplete Plumbing Facilities</b> Wayne County 2000 Census SF3 & 2016 Five-Year ACS Data		
Households	2000 Census	2016 Five-Year ACS
With Complete Plumbing Facilities	2,791	2,549
Lacking Complete Plumbing Facilities	30	25
<b>Total Households</b>	<b>2,821</b>	<b>2,574</b>
<b>Percent Lacking</b>	<b>1.1%</b>	<b>1%</b>

There were 29 households lacking complete kitchen facilities in 2016, compared to 39 households in 2000. This was a change from 1.4 percent of households in 2000 to 1.1 percent in 2016.

<b>Table II.94.48</b> <b>Households with Incomplete Kitchen Facilities</b> Wayne County 2000 Census SF3 & 2016 Five-Year ACS Data		
Households	2000 Census	2016 Five-Year ACS
With Complete Kitchen Facilities	2,782	2,545
Lacking Complete Kitchen Facilities	39	29
<b>Total Households</b>	<b>2,821</b>	<b>2,574</b>
<b>Percent Lacking</b>	<b>1.4%</b>	<b>1.1%</b>

Cost burden is defined as gross housing costs that range from 30.0 to 50.0 percent of gross household income; severe cost burden is defined as gross housing costs that exceed 50.0 percent of gross household income. For homeowners, gross housing costs include property taxes, insurance, energy payments, water and sewer service, and refuse collection. If the homeowner has a mortgage, the determination also includes principal and interest payments on the mortgage loan.

For renters, this figure represents monthly rent and selected electricity and natural gas energy charges.

In Wayne County, 11.7 of households had a cost burden and 8 percent had a severe cost burden. Some 13 percent of renters were cost burdened, and 10.6 percent were severely cost burdened. Owner-occupied households without a mortgage had a cost burden rate of 7.5 percent and a severe cost burden rate of 3.3 percent. Owner occupied households with a mortgage had a cost burden rate of 15.9 percent, and severe cost burden at 12.1 percent.

**Table II.94.49**  
**Cost Burden and Severe Cost Burden by Tenure**  
 Wayne County  
 2000 Census & 2016 Five-Year ACS Data

Data Source	Less Than 30%		31%-50%		Above 50%		Not Computed		Total
	Households	% of Total	Households	% of Total	Households	% of Total	Households	% of Total	
<b>Owner With a Mortgage</b>									
2000 Census	468	74.2%	88	13.9%	66	10.5%	9	1.4%	631
2016 Five-Year ACS	664	71.5%	148	15.9%	112	12.1%	5	0.5%	929
<b>Owner Without a Mortgage</b>									
2000 Census	736	90.5%	41	5%	14	1.7%	22	2.7%	813
2016 Five-Year ACS	988	88.6%	84	7.5%	37	3.3%	6	0.5%	1,115
<b>Renter</b>									
2000 Census	315	60.9%	59	11.4%	41	7.9%	102	19.7%	517
2016 Five-Year ACS	265	50%	69	13%	56	10.6%	140	26.4%	530
<b>Total</b>									
2000 Census	1,519	77.5%	188	9.6%	121	6.2%	133	6.8%	1,961
2016 Five-Year ACS	1,917	74.5%	301	11.7%	205	8%	151	5.9%	2,574

**Housing Problems by Income**

Table II.94.50, at right, shows the HUD calculated Median Family Income (MFI) for a family of four for Wayne County. As can be seen in 2017 the MFI was \$59,600, which compared to \$69,900 for the State of Iowa.

Table II.94.51, shows Comprehensive Housing Affordability Strategy (CHAS) data for housing problems by tenure and income. As can be seen there are a total of 230 owner-occupied and 55 renter-occupied households with a cost burden of greater than 30 percent and less than 50 percent. An additional 129 owner-occupied 55 renter-occupied households had a cost burden greater than 50 percent of income. Overall there are 1,980 households without a housing problem.

**Table II.94.50**  
**Median Family Income**  
 Wayne County  
 2000–2017 HUD MFI

Year	MFI	State of Iowa MFI
2000	34,000	49,100
2001	35,500	52,500
2002	35,900	53,700
2003	41,100	54,900
2004	41,600	55,800
2005	42,600	57,650
2006	42,700	57,800
2007	42,800	58,100
2008	43,200	58,500
2009	45,900	62,000
2010	46,200	62,400
2011	46,800	64,000
2012	47,400	64,800
2013	47,600	64,700
2014	48,700	65,300
2015	51,600	67,500
2016	53,800	68,400
2017	59,600	69,900

**Table II.94.51**  
**Housing Problems by Income and Tenure**  
 Wayne County  
 2010–2014 HUD CHAS Data

Housing Problem	Less Than 30% MFI	30% - 50% MFI	50% - 80% MFI	80% - 100% MFI	Greater than 100% MFI	Total
<b>Owner-Occupied</b>						
Lacking complete plumbing or kitchen facilities	15	4	4	4	4	31
Severely Overcrowded with > 1.51 people per room (and complete kitchen and plumbing)	0	0	10	0	0	10
Overcrowded - With 1.01-1.5 people per room (and none of the above problems)	0	10	4	10	4	28
Housing cost burden greater than 50% of income (and none of the above problems)	100	15	10	0	4	129
Housing cost burden greater than 30% but less than 50% of income (and none of the above problems)	80	55	45	20	30	230
Zero/negative income (and none of the above problems)	4	0	0	0	0	4
has none of the 4 housing problems	35	145	330	190	940	1,640
<b>Total</b>	<b>234</b>	<b>229</b>	<b>403</b>	<b>224</b>	<b>982</b>	<b>2,072</b>
<b>Renter-Occupied</b>						
Lacking complete plumbing or kitchen facilities	0	4	0	0	10	14
Severely Overcrowded with > 1.51 people per room (and complete kitchen and plumbing)	0	0	0	0	0	0
Overcrowded - With 1.01-1.5 people per room (and none of the above problems)	0	10	0	0	4	14
Housing cost burden greater than 50% of income (and none of the above problems)	35	10	10	0	0	55
Housing cost burden greater than 30% but less than 50% of income (and none of the above problems)	15	30	10	0	0	55
Zero/negative income (and none of the above problems)	15	0	0	0	0	15
has none of the 4 housing problems	50	90	105	30	65	340
<b>Total</b>	<b>115</b>	<b>144</b>	<b>125</b>	<b>30</b>	<b>79</b>	<b>493</b>
<b>Total</b>						
Lacking complete plumbing or kitchen facilities	15	8	4	4	14	45
Severely Overcrowded with > 1.51 people per room (and complete kitchen and plumbing)	0	0	10	0	0	10
Overcrowded - With 1.01-1.5 people per room (and none of the above problems)	0	20	4	10	8	42
Housing cost burden greater than 50% of income (and none of the above problems)	135	25	20	0	4	184
Housing cost burden greater than 30% but less than 50% of income (and none of the above problems)	95	85	55	20	30	285
Zero/negative income (and none of the above problems)	19	0	0	0	0	19
has none of the 4 housing problems	85	235	435	220	1,005	1,980
<b>Total</b>	<b>349</b>	<b>373</b>	<b>528</b>	<b>254</b>	<b>1,061</b>	<b>2,565</b>

### Home Mortgage Loans

The FFEIC The Home Mortgage Disclosure Act (HMDA) was enacted by Congress in 1975. Data collected under the HMDA provide a comprehensive portrait of home loan activity, including information pertaining to home purchase loans, home improvement loans, and refinancing. For the analysis only owner-occupied originated loans for single family units were considered. As can be seen in Table II.94.52, of the 65 loans in 2016, 23 loans were for Home Purchases, 9 were for Home Improvement and 33 were for refinancing.

<b>Table II.94.52</b>				
<b>Owner-Occupied Single Family Home Loans by Loan Type</b>				
Wayne County				
2008 – 2016 HMDA Data				
<b>Year</b>	<b>Home Purchase</b>	<b>Home Improvement</b>	<b>Refinancing</b>	<b>Total</b>
2008	17	6	22	45
2009	25	6	37	68
2010	12	6	19	37
2011	12	2	25	39
2012	22	4	52	78
2013	22	8	35	65
2014	18	6	35	59
2015	26	5	19	50
2016	23	9	33	65

Table II.94.53, shows the average loan value by loan type. In 2008, average home purchase loans was \$73,455 in 2012 and \$104,435 in 2016. Overall, average loans were \$81,067 in 2008 and \$108,308 in 2016.

<b>Table II.94.53</b>				
<b>Owner-Occupied Single Family Home Loans by Average Loan Amount</b>				
Wayne County				
2008 – 2016 HMDA Data				
<b>Year</b>	<b>Home Purchase</b>	<b>Home Improvement</b>	<b>Refinancing</b>	<b>Total</b>
2008	\$95,471	\$39,000	\$81,409	\$81,067
2009	\$78,960	\$28,000	\$110,081	\$91,397
2010	\$69,417	\$30,167	\$80,737	\$68,865
2011	\$91,500	\$44,500	\$117,240	\$105,590
2012	\$73,455	\$67,250	\$87,673	\$82,615
2013	\$69,227	\$79,375	\$108,257	\$91,492
2014	\$96,222	\$30,667	\$152,714	\$123,068
2015	\$84,962	\$50,200	\$117,947	\$94,020
2016	\$104,435	\$26,000	\$133,455	\$108,308

Table II.94.54, shows the total volume of owner-occupied single family loans. In 2008, average home purchase loans was \$1,616,000 in 2012 and \$2,402,000 in 2016. Overall, average loans were \$3,648,000 in 2008 and \$7,040,000 in 2016.

**Table II.94.54**  
**Total Volume of Owner-Occupied Single Family Loans**  
 Wayne County  
 2008 – 2016 HMDA Data

Year	Home Purchase	Home Improvement	Refinancing	Total
2008	\$1,623,000	\$234,000	\$1,791,000	\$3,648,000
2009	\$1,974,000	\$168,000	\$4,073,000	\$6,215,000
2010	\$833,000	\$181,000	\$1,534,000	\$2,548,000
2011	\$1,098,000	\$89,000	\$2,931,000	\$4,118,000
2012	\$1,616,000	\$269,000	\$4,559,000	\$6,444,000
2013	\$1,523,000	\$635,000	\$3,789,000	\$5,947,000
2014	\$1,732,000	\$184,000	\$5,345,000	\$7,261,000
2015	\$2,209,000	\$251,000	\$2,241,000	\$4,701,000
2016	\$2,402,000	\$234,000	\$4,404,000	\$7,040,000

The 2017 Housing Needs Forecast reports housing demand projections from 2017 to 2050. Three possible economic futures portraying moderate, strong, and very strong growth were used to create three forecasts. The strong scenario is the base case, representing conditions as of today. The *moderate growth* scenario forecast projects household growth with the assumption of slower population and employment growth, where the *very strong growth* scenario incorporates assumptions of much stronger employment and population growth over the forecast horizon.

The primary objective of offering three alternative forecasts is to enhance planning capacity and to provide additional tools in order to assist state and local governments in their ongoing housing needs assessment, thereby facilitating informed discussion about housing demand at the local community level. These forecasts prove useful when interpreting the need for new or rehabilitated housing and whether single-family or rental housing activities might be best undertaken.

All three forecasts span the period of 2016 through 2050 and offer predictions of the demand for housing. However, only the strong growth scenario is reported here. The moderate and very strong scenarios are reported in the appendix.

This report uses the modified population projections based on projections released from Woods & Poole Economic, Inc (W&P).

Income categories were calculated using the Housing and Urban Development CHAS (Comprehensive Housing Affordability Strategy) data and are expressed as a percentage of area Median Family Income (MFI). This distribution is assumed to remain constant over the forecast horizon. Homeownership rates were forecasted based on historical trends.

Table II.94.55, shows the *strong growth scenario* for the Wayne County. As can be seen there were 2,044 owner-occupied and 530 renter-occupied households in 2016, for a total of 2,574 households. In 2030, there will be a projected 2,691 households, of which 2,157 are projected to be owner occupied and the remaining 534 are expected to be renter-occupied.

By 2050, there are projected to be 2,100 owner-occupied households, of which 236 owner-occupied households are expected to have incomes of 0-30 percent of MFI and 415 are projected



to have incomes of 50.1-80.0 percent of MFI. In 2050, there are projected to be 505 renter households, of which 118 renter households are expected to have incomes between 0 and 30.0 percent of median family income 125 renter households with incomes between 50.1-80.0 percent of MFI. Overall households are projected to reach 2,605 occupied units by 2050, of which 355 are expected to have incomes on between 0 and 30 percent of MFI.

<b>Table II.94.55</b> <b>Housing Demand Forecast</b> Wayne County Strong Growth Scenario								
Income (% of MFI)	2016	2020	2025	2030	2035	2040	2045	2050
<b>Owner</b>								
0-30%	230	242	242	243	243	241	239	236
30.1-50%	222	234	234	234	234	233	231	228
50.1-80%	404	425	425	426	426	424	420	415
80.1-95%	168	177	177	177	177	176	174	172
95.1-115%	246	259	259	259	259	258	256	253
115+%	774	814	815	817	817	812	805	795
<b>Total</b>	<b>2,044</b>	<b>2,149</b>	<b>2,152</b>	<b>2,157</b>	<b>2,156</b>	<b>2,144</b>	<b>2,125</b>	<b>2,100</b>
<b>Renter</b>								
0-30%	124	128	126	125	124	123	121	118
30.1-50%	153	157	155	154	152	151	148	145
50.1-80%	131	135	133	132	131	129	127	125
80.1-95%	27	28	28	27	27	27	26	26
95.1-115%	37	38	38	37	37	37	36	35
115+%	58	59	59	58	58	57	56	55
<b>Total</b>	<b>530</b>	<b>545</b>	<b>539</b>	<b>534</b>	<b>529</b>	<b>523</b>	<b>514</b>	<b>505</b>
<b>Total</b>								
0-30%	354	370	369	368	367	364	360	355
30.1-50%	375	391	389	388	387	384	379	374
50.1-80%	535	559	558	558	557	553	547	540
80.1-95%	195	205	204	205	204	203	201	198
95.1-115%	283	297	297	297	296	295	292	288
115+%	832	874	874	875	874	869	861	851
<b>Total</b>	<b>2,574</b>	<b>2,694</b>	<b>2,691</b>	<b>2,691</b>	<b>2,685</b>	<b>2,667</b>	<b>2,639</b>	<b>2,605</b>